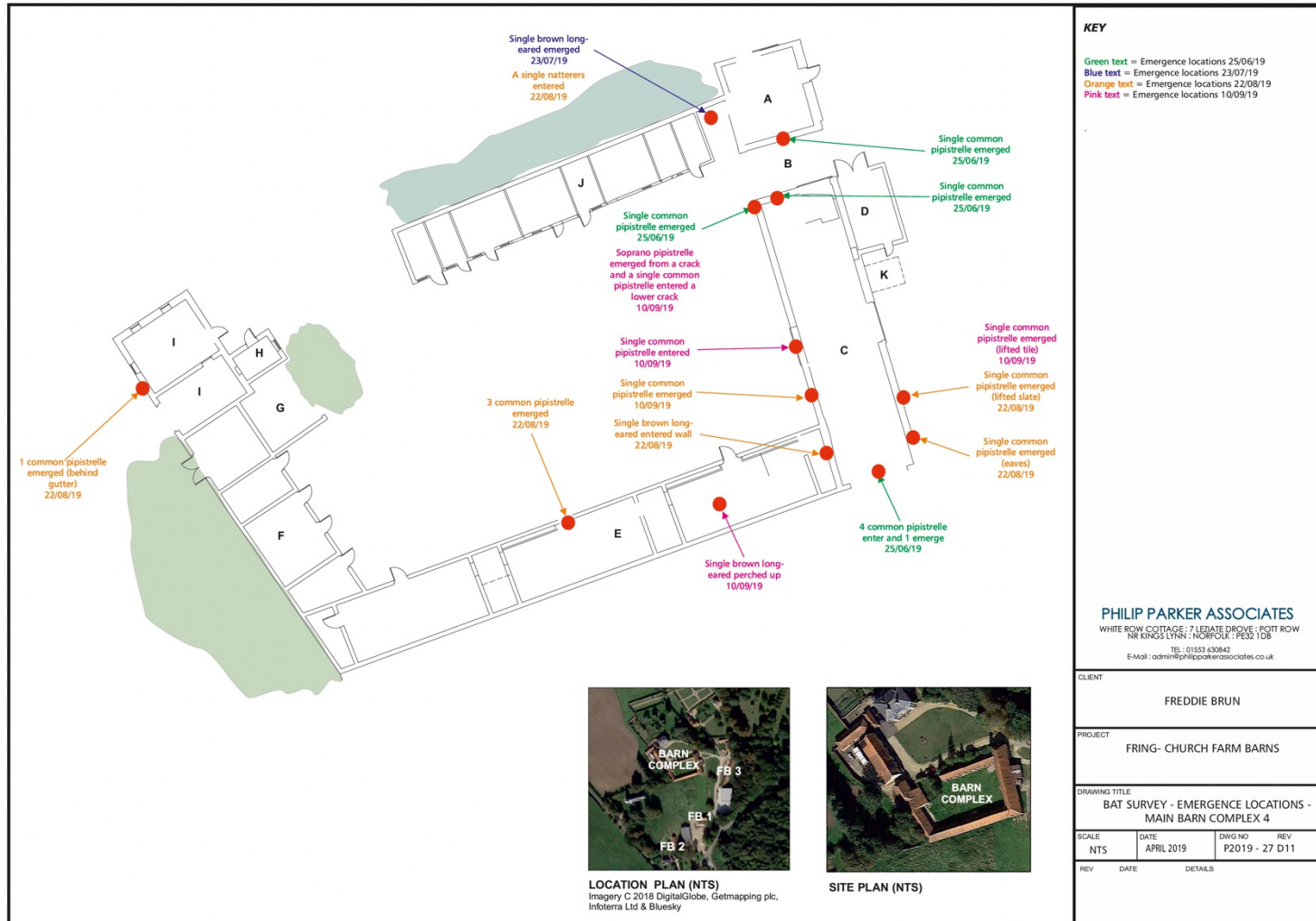
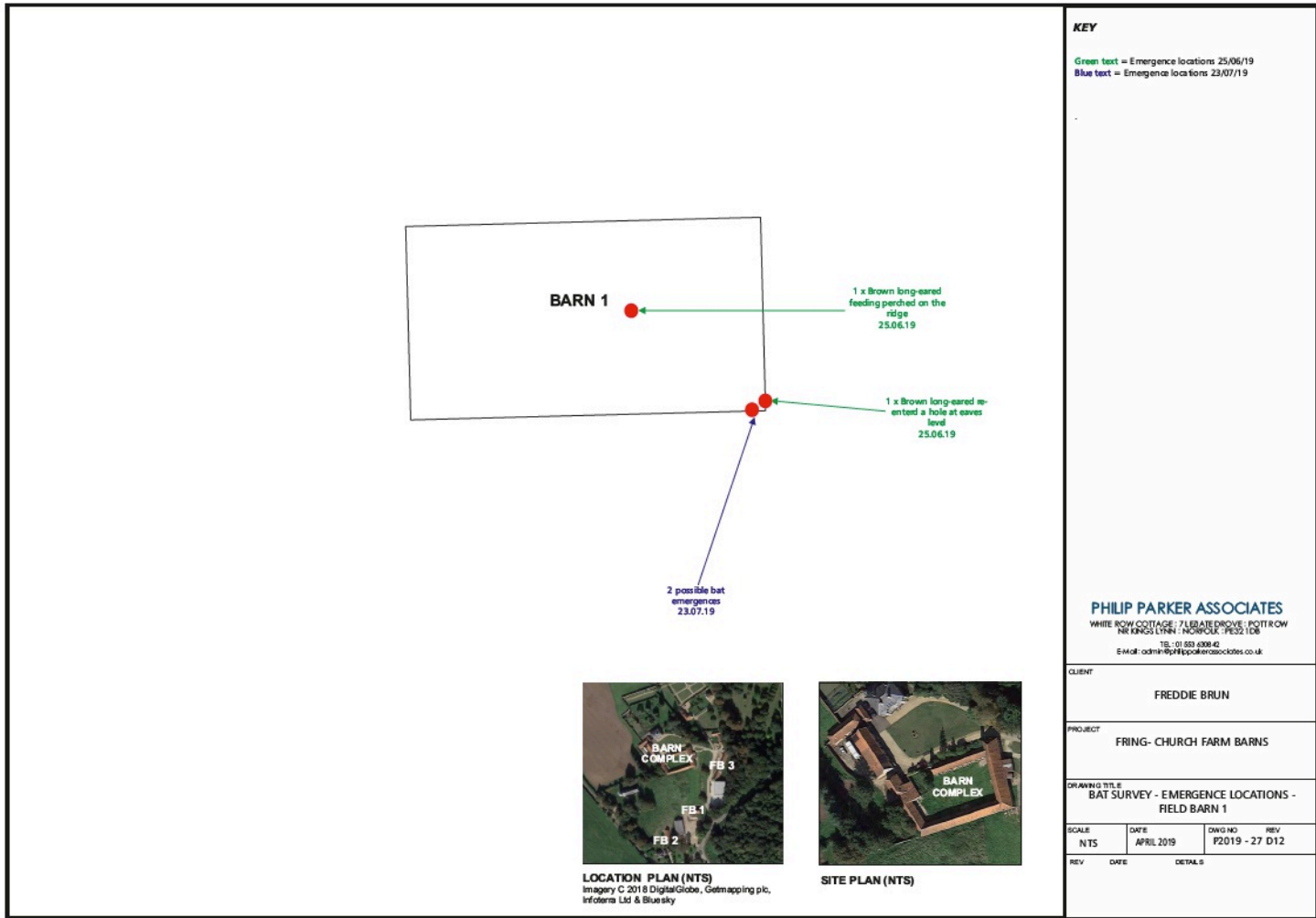


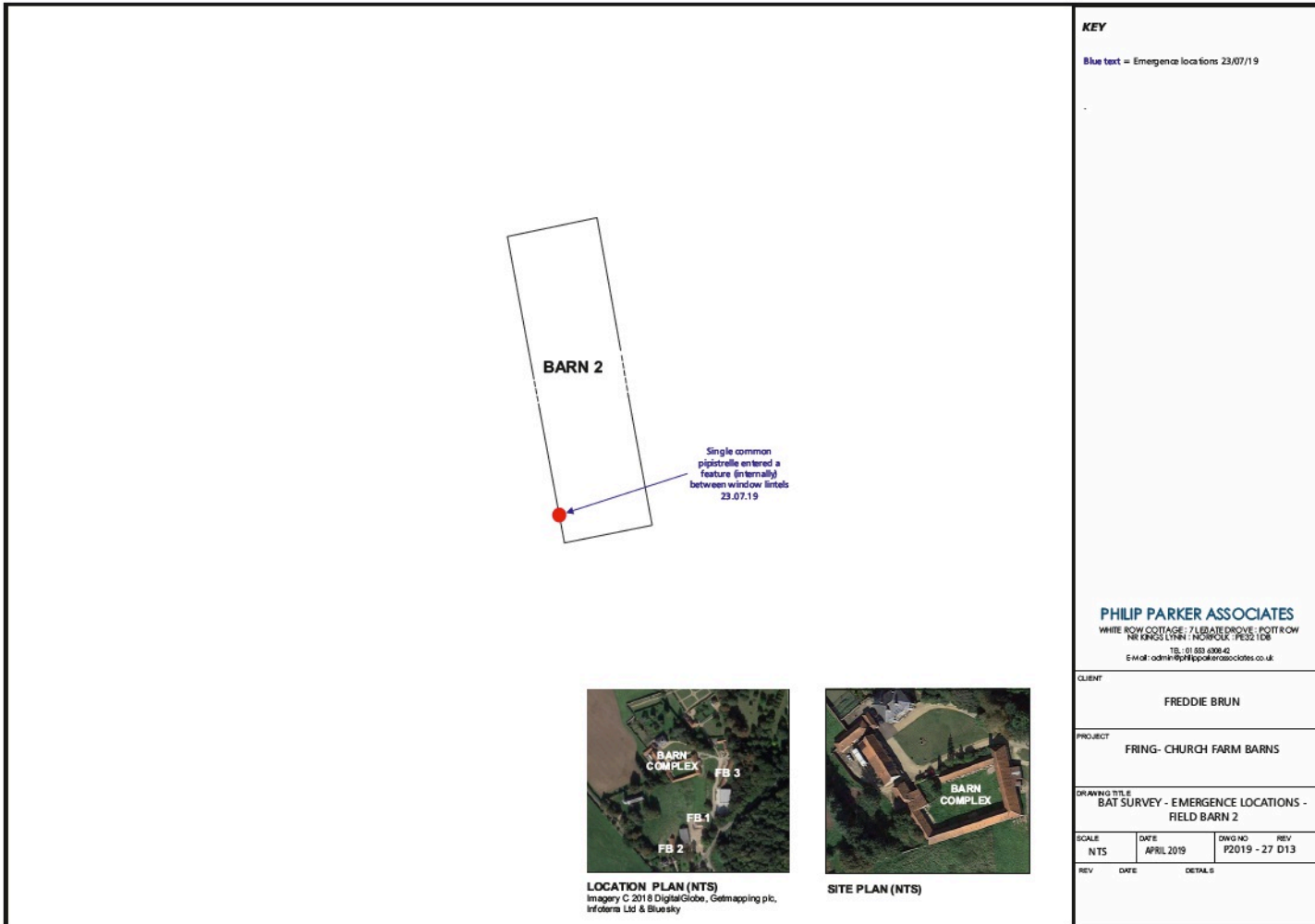
DRAWING D11 2019 EMERGENCE LOCATIONS



DRAWING D12 2019 EMERGENCE LOCATIONS



DRAWING D13 2019 EMERGENCE LOCATIONS



KEY
 Blue text = Emergence locations 23/07/19

PHILIP PARKER ASSOCIATES
 WHITE ROW COTTAGE, 7 LILBATE DRIVE, POTTRAW
 NENEING LANE, NORFOLK, PE32 1DB
 TEL: 01 653 438142
 E Mail: admin@philipparkeassociates.co.uk

CLIENT
 FREDDIE BRUN

PROJECT
 FRING- CHURCH FARM BARNs

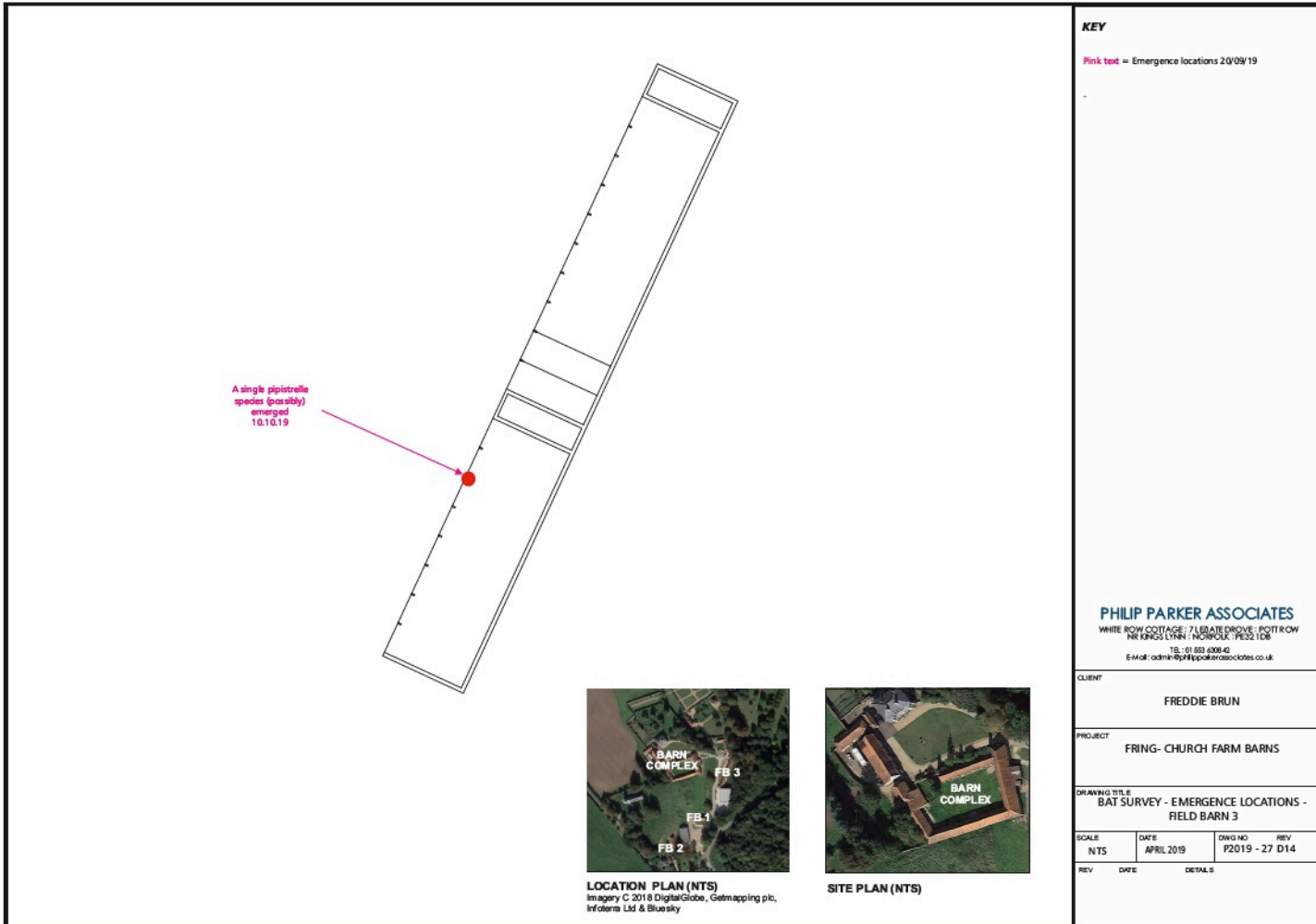
DRAWING TITLE
 BAT SURVEY - EMERGENCE LOCATIONS -
 FIELD BARN 2

SCALE	DATE	DWG NO	REV
NTS	APRIL 2019	P2019 - 27	D13

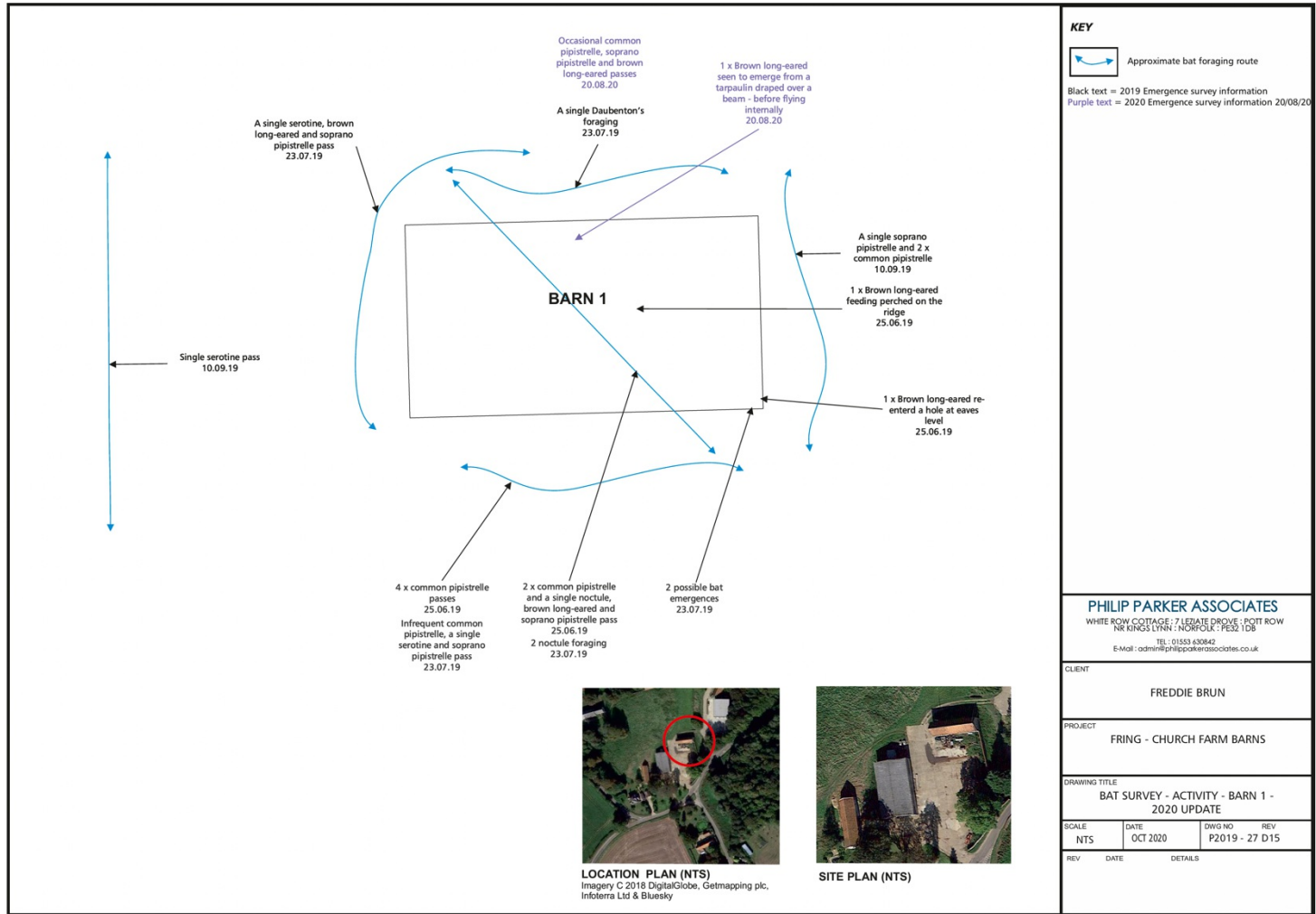
REV	DATE	DETAILS



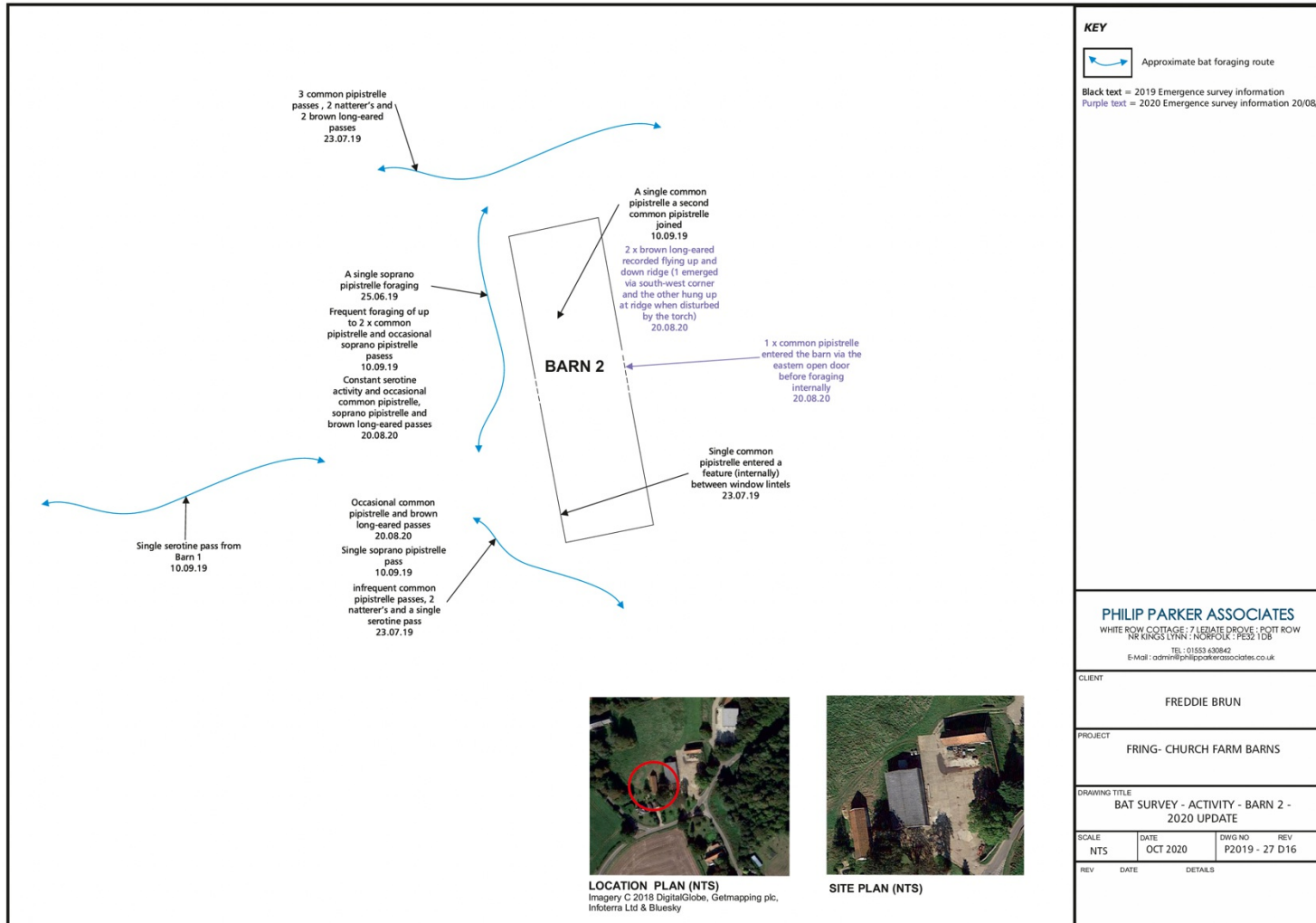
DRAWING D14 2019 EMERGENCE LOCATIONS



DRAWING D15 2020 ACTIVITY UPDATE - BARN 1



DRAWING D16 2020 ACTIVITY UPDATE - BARN 2



KEY

Approximate bat foraging route

Black text = 2019 Emergence survey information
 Purple text = 2020 Emergence survey information 20/08/20

PHILIP PARKER ASSOCIATES
 WHITE ROW COTTAGE, 7 LEIATE DRIVE, POTT ROW
 NR KING'S LYNN, NORFOLK, PE32 1DU
 TEL: 01553 630842
 E-Mail: admin@philipparkerassociates.co.uk

CLIENT
 FREDDIE BRUN

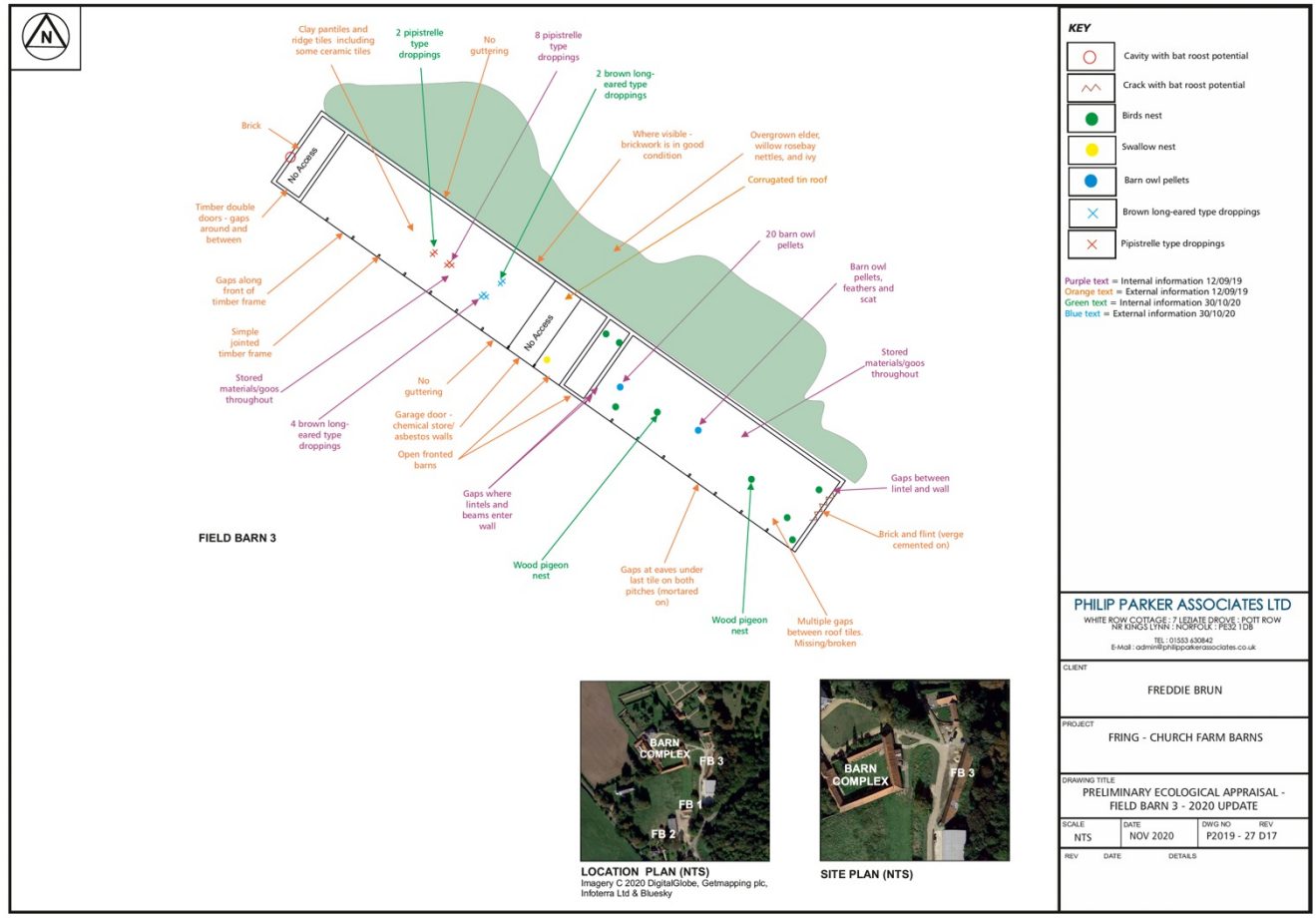
PROJECT
 FRING- CHURCH FARM BARNs

DRAWING TITLE
 BAT SURVEY - ACTIVITY - BARN 2 -
 2020 UPDATE

SCALE	DATE	DWG NO	REV
NTS	OCT 2020	P2019 - 27 D16	

REV	DATE	DETAILS

DRAWING D17 2020 ACTIVITY UPDATE – FIELD BARN 3



KEY

- Cavity with bat roost potential
- Crack with bat roost potential
- Birds nest
- Swallow nest
- Barn owl pellets
- Brown long-eared type droppings
- Pipistrelle type droppings

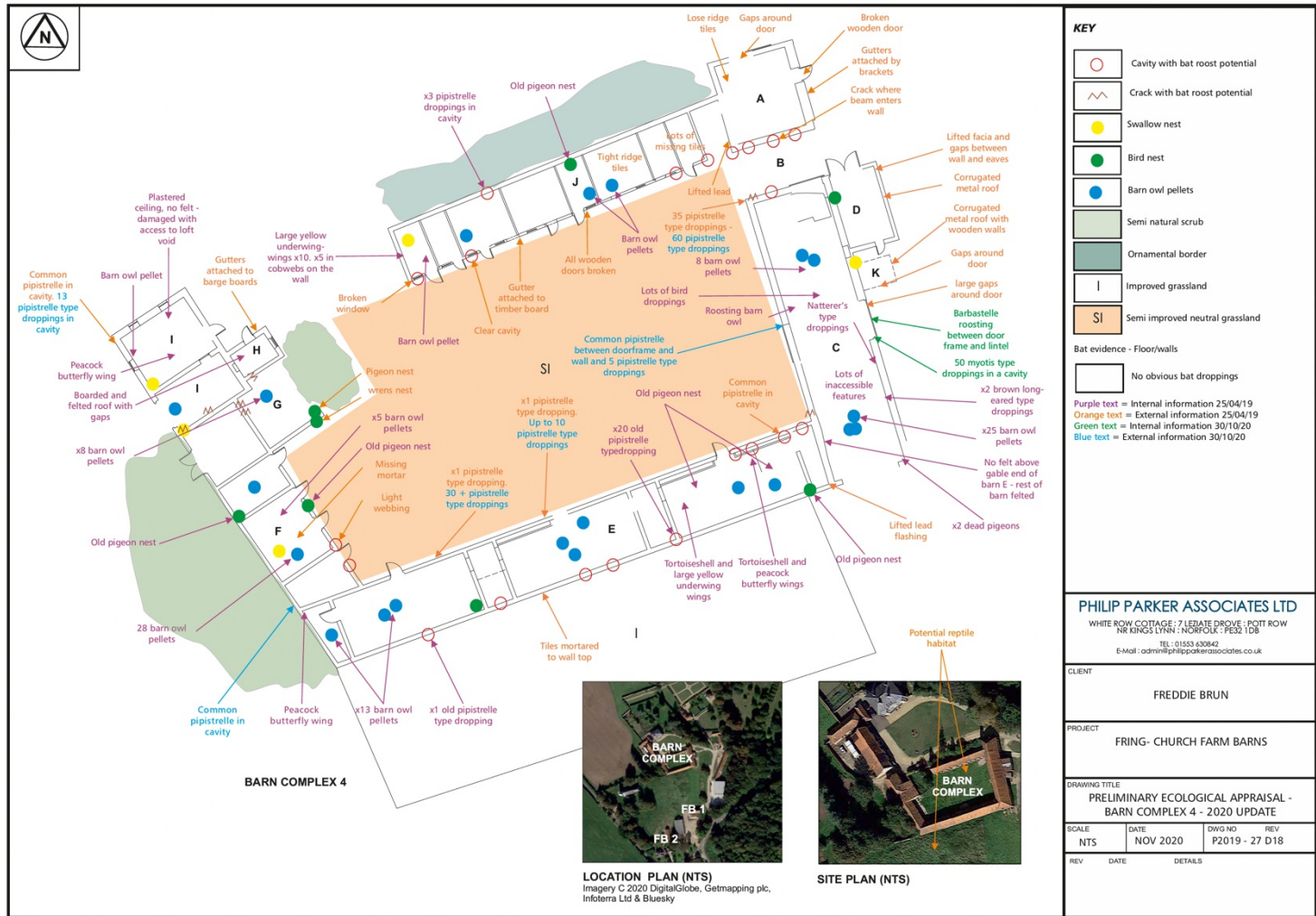
Purple text = Internal information 12/09/19
 Orange text = External information 12/09/19
 Green text = Internal information 30/10/20
 Blue text = External information 30/10/20

PHILIP PARKER ASSOCIATES LTD
 WHITE ROW COTTAGE, 7 LEBATE DRIVE, KITT ROW
 NR KINGSLYNN, NORFOLK, PE32 1DB
 TEL: 01553 630640
 E-Mail: admin@philipparkerassociates.co.uk

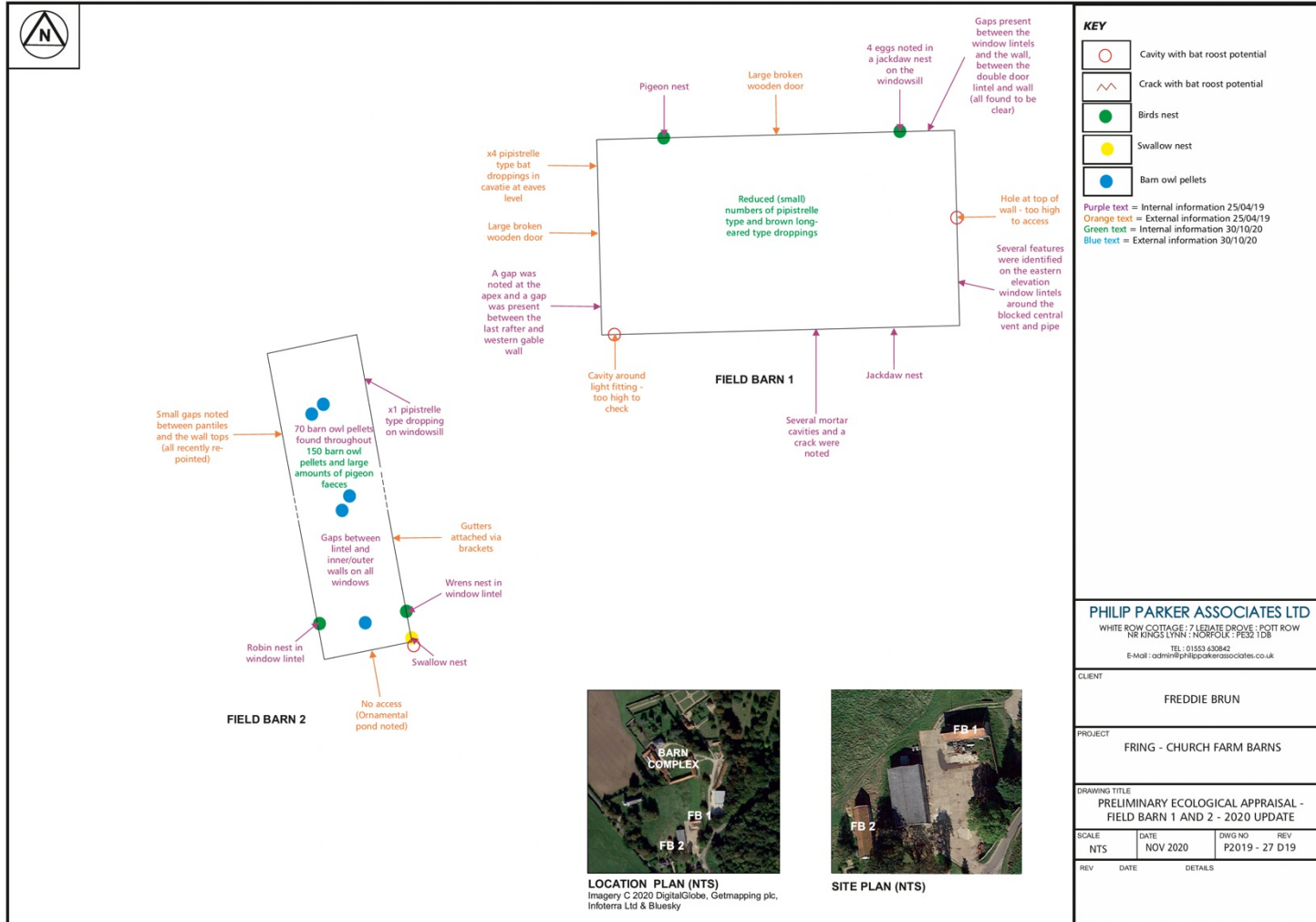
CLIENT	FREDDIE BRUN		
PROJECT	FRING - CHURCH FARM BARN		
DRAWING TITLE	PRELIMINARY ECOLOGICAL APPRAISAL - FIELD BARN 3 - 2020 UPDATE		
SCALE	DATE	DWG NO	REV
NTS	NOV 2020	P2019 - 27 D17	
REV	DATE	DETAILS	



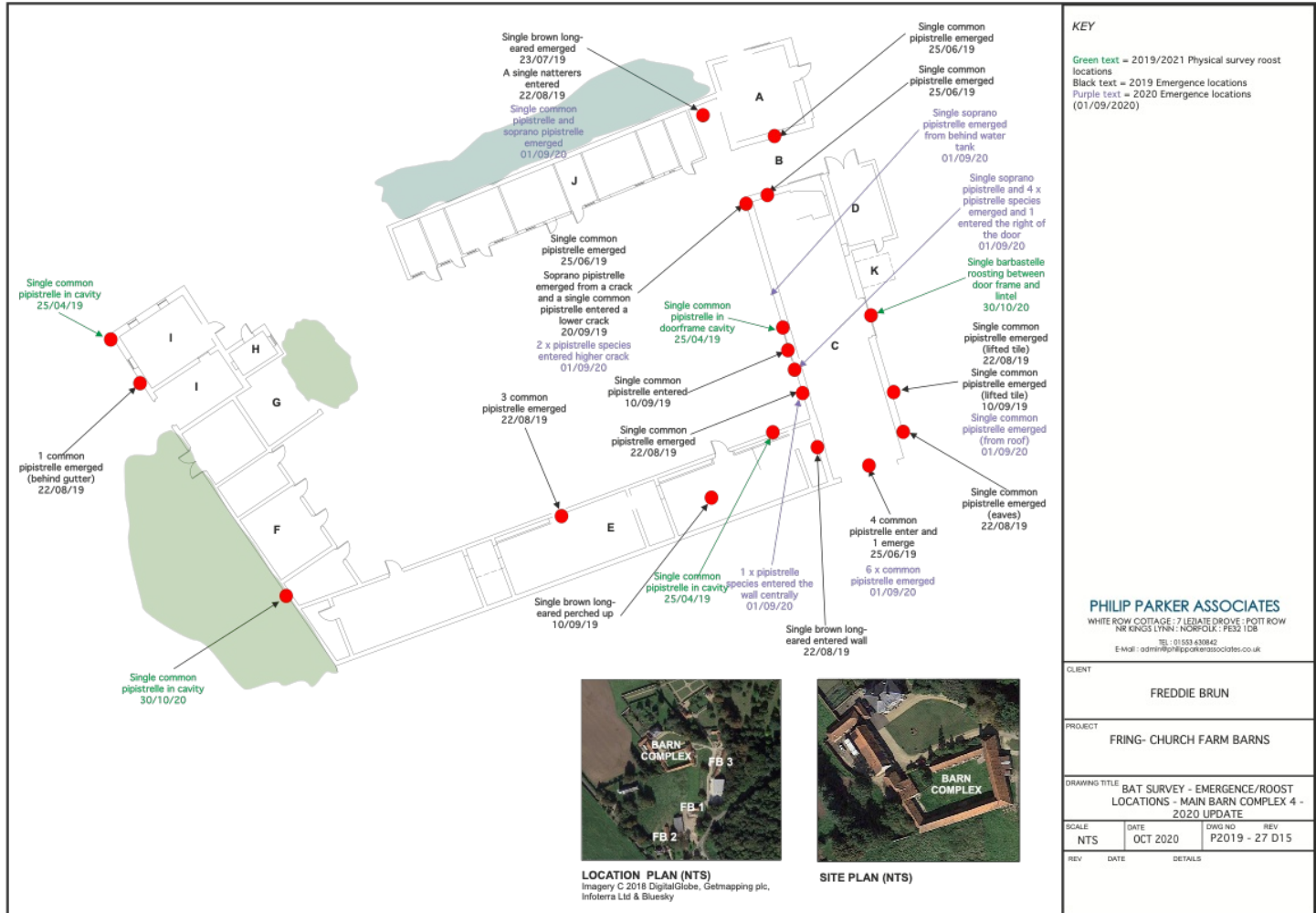
DRAWING D18 2020 PRELIMINARY ECOLOGICAL APPRAISAL UPDATE – MAIN BARN COMPLEX 4



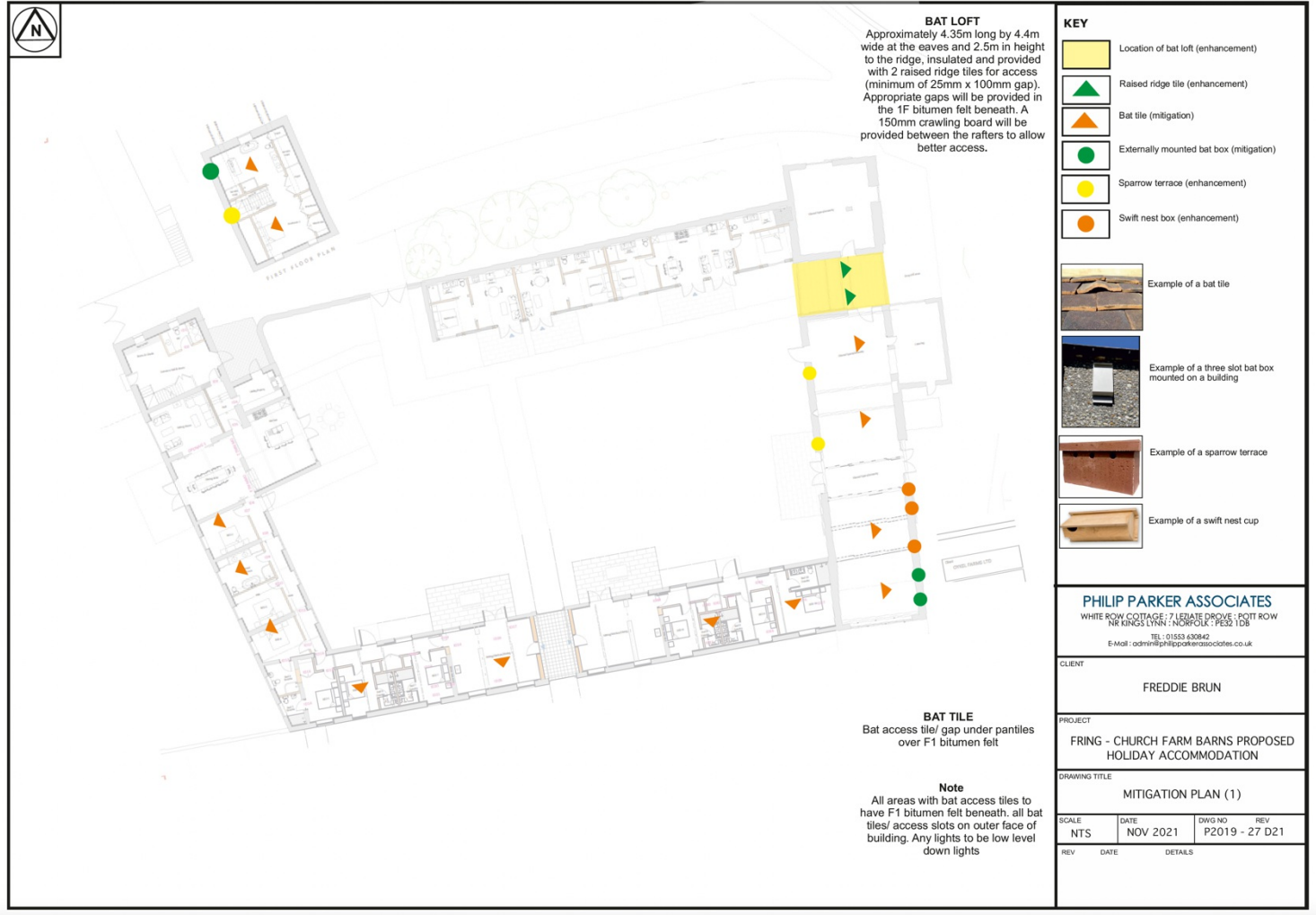
DRAWING D19 2020 PRELIMINARY ECOLOGICAL APPRAISAL UPDATE – FIELD BARN BARN 1 & 2



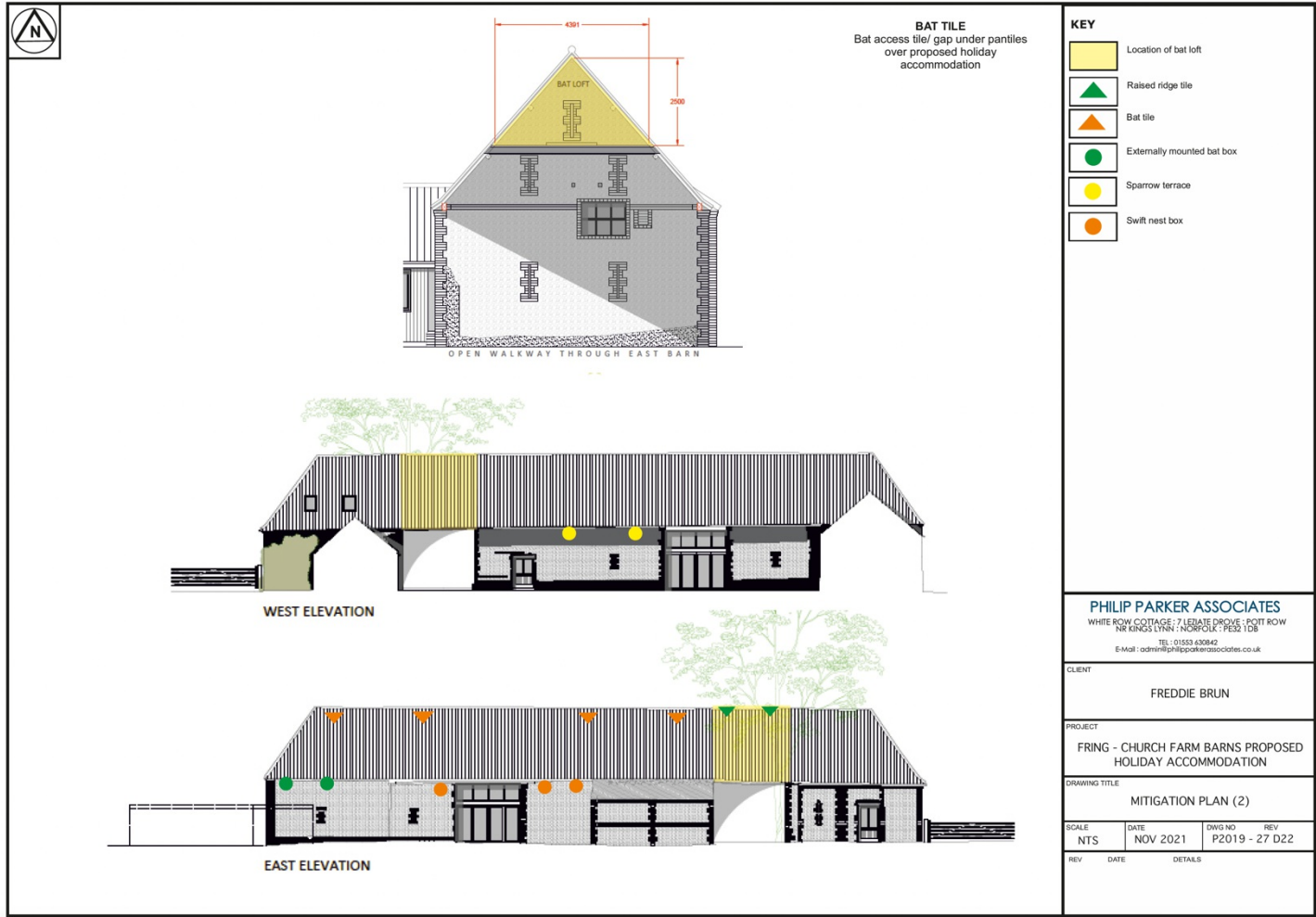
DRAWING D20 2020 EMERGENCE/ROOST LOCATIONS – MAIN BARN COMPLEX 4



DRAWING D21 MITIGATION PLAN - 1



DRAWING D22 MITIGATION PLAN - 2



DRAWING D23 MITIGATION PLAN - 3



DRAWING D24 MITIGATIN PLAN - 4



APPENDIX A COUNTY WILDLIFE SITES

County Wildlife Site 2197 The Thicket

Frequent new planting in this part, particularly away from the edges, includes oak, ash, hornbeam *Carpinus betulus*, lime and beech (*Fagus sylvatica*). The understorey throughout the wood is well-developed, with species including hazel (*Corylus avellana*), holly (*Ilex aquifolium*), field maple (*Acer campestre*), apple and elder (*Sambucus nigra*), with some small trees of sycamore, ash and English elm (*Ulmus procera*). Many of the field maple have grown to maturity as trees. The understorey shrubs such as field maple, hawthorn (*Crataegus monogyna*) and hazel make up a dense low canopy, particularly in the western end. Cherry laurel (*Prunus laurocerasus*) and wild privet (*Ligustrum vulgare*) become dominant towards the very western end. Bramble (*Rubus fruticosus* agg.) is locally frequent throughout in large banks. Coppicing of hazel and ash is frequent in the east. The ground flora is dominated by dog's mercury (*Mercurialis perennis*) throughout the wood. In the lighter parts of the eastern end of the wood, species include wood sedge (*Carex sylvatica*), wood false-brome (*Brachypodium sylvaticum*), wood avens (*Geum urbanum*), primrose *Primula vulgaris* and ground ivy (*Glechoma hederacea*).

County Wildlife Site 2048 Land at Boundary Farm

The southern half of the site supports marshy grassland with a shallow drainage ditch at the southeastern end. Adjacent to the ditch is a wide belt of sharp-flowered rush (*Juncus acutiflorus*) interspersed with ragged-robin (*Lychnis flos-cuculi*), common sorrel (*Rumex acetosa*), water mint (*Mentha aquatica*), bog stitchwort (*Stellaria alsine*), meadow vetchling (*Lathyrus pratensis*), marsh-marigold (*Caltha palustris*), hairy sedge (*Carex hirta*), brown sedge (*Carex disticha*), soft-rush (*Juncus effusus*) and narrow buckler-fern (*Dryopteris carthusiana*). To the south of the ditch, a sloping area is dominated by great willow-herb (*Epilobium hirsutum*) and meadowsweet (*Filipendula ulmaria*) interspersed with frequent marsh thistle (*Cirsium palustre*). Patches of open, lower vegetation support ragged-robin, bog stitchwort, creeping buttercup (*Ranunculus repens*), greater bird's-foot-trefoil (*Lotus uliginosus*), tufted vetch (*Vicia cracca*), bugle (*Ajuga reptans*), common marsh-bedstraw (*Galium palustre*) and germander speedwell (*Veronica chamaedrys*), with occasional tormentil (*Potentilla erecta*). The northern half supports heavily grazed semi-improved neutral grassland with impeded drainage, dominated by creeping buttercup, Yorkshire-fog (*Holcus lanatus*) and rough meadow-grass (*Poa trivialis*). Great willowherb, marsh thistle, hedge woundwort (*Stachys sylvatica*), hogweed (*Heracleum sphondylium*) and nettle (*Urtica dioica*) occur in small patches of ungrazed sward. A well-drained area in the northeastern corner of the site supports abundant lesser stitchwort (*Stellaria graminea*), with yarrow (*Achillea millefolium*), lady's bedstraw (*Galium verum*), germander speedwell and patches of ground-ivy (*Glechoma hederacea*). Yorkshire-fog is frequent, with

creeping bent (*Agrostis stolonifera*), red fescue (*Festuca rubra*), yellow oat-grass (*Trisetum flavescens*) and field wood-rush (*Luzula campestris*).

County Wildlife Site 279 Whitlingham Fen

The fen vegetation is dominated by reed sweet-grass (*Glyceria maxima*) or greater pond-sedge (*Carex riparia*). Bulrush (*Typha latifolia*) and reed (*Phragmites australis*) appear in dense stands along old ditchlines and in the wettest areas. Along the peripheries the vegetation becomes more diverse with purple loosestrife (*Lythrum salicaria*) and water mint (*Mentha aquatica*). The wet woodland is dominated by mature willow (*Salix* spp.) scrub with occasional hawthorn (*Crataegus monogyna*) and elder (*Sambucus nigra*). In drier areas this grades into beech (*Fagus sylvatica*) and hornbeam (*Carpinus betulus*) woodland with a ground flora of nettle (*Urtica dioica*). The ponds lie towards the centre of the site and have abundant growth of great yellow-cress (*Rorippa amphibia*), water-plantain (*Alisma plantago-aquatica*) and pink water-speedwell (*Veronica catenata*). Drier peripheral areas contain great willowherb (*Epilobium hirsutum*) and broad-leaved ragwort (*Senecio fluviatilis*) whilst willow (*Salix* spp.) scrub is a frequent invader of shallow muddy margins.

County Wildlife Site 263 Furze Close

The canopy consists of even-aged oak (*Quercus robur*) standards and occasional ash (*Fraxinus excelsior*), particularly towards the centre. Other canopy species are rare, tending to occur where fallen trees create open spaces. These include hornbeam (*Carpinus betulus*), field maple (*Acer campestre*), hawthorn (*Crataegus monogyna*) and sloe (*Prunus spinosa*). To the south of the ride is a uniform shrub layer of well-spaced, mature hazel (*Corylus avellana*) coppice. To the north this becomes replaced by a mixture of young sloe, ash, hawthorn, guelder-rose (*Viburnum opulus*) and elder (*Sambucus nigra*). The ground flora is dominated by bramble (*Rubus fruticosus* agg.) or dog's mercury (*Mercurialis perennis*) with nettle (*Urtica dioica*), bugle (*Ajuga reptans*), lesser pond-sedge (*Carex acutiformis*) and woodruff (*Galium odoratum*) and broad-leaved helleborine (*Epipactus helleborine*), which are both scarce in Norfolk. The centre of the site consists of ash over dense sloe with a similar ground flora to elsewhere. The ride is heavily shaded with a flora of dog's mercury, nettle, wood avens (*Geum urbanum*), herb-robert (*Geranium robertianum*), enchanter's nightshade (*Circaea lutetiana*) and giant hogweed (*Heracleum mantegazzianum*).

County Wildlife Site 262 Framingham Hall Grounds

The aquatic vegetation is dominated by thick spined water-milfoil (*Myriophyllum spicatum*) with emergent mare's-tail (*Hippuris vulgaris*) and bittersweet (*Solanum dulcamara*). The marginal vegetation is diverse although short from cutting. Common Spike-rush (*Eleocharis palustris*),

gipsywort (*Lycopus europaeus*) and water mint (*Mentha aquatica*) are common with scattered tussocks of cyperus sedge (*Carex pseudocyperus*) and false fox-sedge (*Carex obtrubae*). Small islands within the lake have birch (*Betula pendula*) and pine (*Pinus sylvestris*). Small swamp areas have greater pond-sedge (*Carex riparia*), reed (*Phragmites australis*) and notably lesser bulrush (*Typha angustifolia*). The disturbed woodland has goat willow (*Salix caprea*) as well as ash (*Fraxinus excelsior*) and sycamore (*Acer pseudoplatanus*) over a ground flora of dog's mercury (*Mercurialis perennis*).

County Wildlife Site 265 Framingham Pigot East Pond

To the north of the pond is an area of branched bur-reed (*Sparganium erectum*) with frequent water-plantain (*Alisma plantago-aquatica*), water horsetail (*Equisetum fluviatile*) and water-starwort (*Callitriche* sp.). This grades into a stand of bulrush (*Typha latifolia*). To the south is an area dominated by tufted sedge (*Carex elata*) with abundant marsh horsetail (*Equisetum palustre*), gipsywort (*Lycopus europaeus*) and scattered great willowherb (*Epilobium hirsutum*) and cyperus sedge (*Carex pseudocyperus*). On higher ground surrounding the pond is a ring of tufted sedge with creeping thistle (*Cirsium arvense*), nettle (*Urtica dioica*) and bramble (*Rubus fruticosus* agg.).

County Wildlife Site 277 Bramerton Hall Grounds

Most of the trees are oak (*Quercus robur*) and range from about 80 to 150 years old. Other species are scattered and include sweet chestnut (*Castanea sativa*), hornbeam (*Carpinus betulus*), beech (*Fagus sylvatica*), alder (*Alnus glutinosa*), willow (*Salix* sp.) and sycamore (*Acer pseudoplatanus*). The underlying grassland is neutral and semi-improved. (Based on the 1985 habitat survey (NWT)).

APPENDIX B BAT ACTIVITY SURVEY TABLES

The results of the activity surveys are shown below. Roosting bats (where present) are highlighted.

CP	Common pipistrelle	SP	Soprano pipistrelle
BLE	Brown long-eared	NAT	Natterer's
SER	Serotine	PIP	Pipistrelle species
NOC	Noctule		

Emergence survey on the 25th June 2019

Sunset time: 21:27	
Time commence: 21:05	Weather: Dry and breezy with a light drizzle.
External Temp: 16.3 C	External Humidity: 90%
Note:	
21:00 – 21:15	<p>Field Barn 1 No activity was recorded.</p> <p>Barn 2 No activity was recorded.</p> <p>Main Barn 4 Complex During the period 50 x CP were recorded along the south-west elevation of Barn C, 4 of the CP entered Barn C and were not seen flying internally or emerging.</p>
21:15 – 21:30	<p>Field Barn 1 No activity was recorded.</p> <p>Field Barn 2 No activity was recorded.</p> <p>Main Barn 4 Complex 21:41 1 x CP emerged from the main entrance to Barn A.</p>
21:30 – 21:45	<p>Field Barn 1 No activity was recorded.</p> <p>Field Barn 2 No activity was recorded.</p> <p>Main Barn 4 Complex During the period a single CP was recorded passing though area B and back again. 21:44 1 x SP emerged from the crack on the northern elevation of Barn C.</p>
21:45 – 22:00	<p>Field Barn 1 A single CP pass was recorded along the south-west elevation of the barn. No activity was recorded.</p> <p>Field Barn 2 No activity was recorded.</p> <p>Main Barn 4 Complex During the period a single CP was recorded foraging along the trees towards the west of Barn I, whilst CP, SP and BLE were recorded foraging towards the north of barn A. 3 x CP were foraging around the courtyard. 21:55 1 x CP emerged from the southern entrance of Barn C.</p>

<p>22:00 – 22:15</p>	<p>Field Barn 1 During the period 3 x CP pass was recorded along the south-west elevation of the barn. 22:05 1 x BLE entered the barn via a hole on the eastern elevation at eaves level, before being seen flying internally.</p> <p>Field Barn 2 No activity was recorded.</p> <p>Main Barn 4 Complex During the period a single CP and SP were recorded foraging around the trees towards the west of Barn I, whilst constant CP foraging activity was also recorded along the trees towards the north of barn A. A single CP was also recorded passing in and out of the main entrance of Barn C before flying off at 22:04.</p>
<p>22:15 – 22:30</p>	<p>Field Barn 1 During the period a single NOC pass was recorded flying over the barn from north to south along with 2 x CP and a single SP pass. A single BLE pass was also recorded coming from the northern side of the barn heading north. 22:15 1 x BLE was recorded feeding internally from the ridge within the barn.</p> <p>Field Barn 2 No activity was recorded.</p> <p>Main Barn 4 Complex Occasional CP were recorded foraging along the southern elevation of Barn E and into Barn C. A single NOC passed over the barn complex from south to the north. Frequent CP passes and foraging activity was recorded along the trees towards the north of Barn A before circling towards the east of Barn E and back. Occasional CP and BLE passes were also recorded foraging over the courtyard.</p>
<p>22:30 – 22:45</p>	<p>Field Barn 1 No activity was recorded.</p> <p>Field Barn 2 No activity was recorded.</p> <p>Main Barn 4 Complex Frequent CP and SP passes were recorded towards the eastern elevation of Barn C. Occasional CP passes were also reordered over the courtyard. 22:41 1 x BLE emerged from the main entrance of Barn C before heading south-east.</p>
<p>22:45 – 23:00</p>	<p>Main Barn Complex During the period a single BLE flew from east to west along the southern elevation of Barn E.</p> <p>Barn 1 No activity was recorded.</p> <p>Barn 2 (22:58-22:59) Several passes and foraging by a single SP was recorded along the eastern elevation of the barn.</p>
<p>23:00 – 23:15</p>	<p>Field Barn 1 A single NOC pass was recorded over the barn. The BLE recorded within the barn at 22:15 was no longer present.</p> <p>Field Barn 2 No activity was recorded.</p> <p>Main Barn 4 Complex No activity was recorded.</p>

Time complete: 23:05

Emergence survey on the 23th July 2019

Sunset time: 21:00	
Time commence: 20:50 Weather: Dry, warm with 0% cloud cover	
External Temp: 25.7 C External Humidity: 50%	
Note: Main Barn Complex A single surveyor was recording activity within the courtyard of the main Barn Complex. Cattel shed 21:09 a single barn owl emerged from the southern barn. A single tawny owl was also recorded passing over from the trees behind the barns.	
20:45 – 21:00	Field Barn 1 No activity was recorded. Field Barn 2 No activity was recorded. Field Barn 3 No activity was recorded. Main Barn 4 Complex No activity was recorded.
21:00 – 21:15	Field Barn 1 No activity was recorded. Field Barn 2 No activity was recorded. Field Barn 3 A single SP pass was recorded towards the north of the northern barn along with infrequent CP passes. Main Barn 4 Complex No activity was recorded.
21:15 – 21:30	Field Barn 1 No activity was recorded. Field Barn 2 No activity was recorded. Barn 3 No activity was recorded. Main Barn 4 Complex During the period a single SP was seen to circle within Barn D. 3 x CP passes were recorded passing though area B.
21:30 – 21:45	Field Barn 1 A single SP pass was recorded along the eastern elevation, heading north. 21:31 possible emergence from a CP at eaves level on the south-eastern elevation. 21:45 possible emergence from a CP from the eastern gable end/ the eastern end of the southern elevation.

	<p>Field Barn 2 No activity was recorded.</p> <p>Field Barn 3 Single CP and BLE were recorded heading east to west before circling around the trees on the eastern edge of the site.</p> <p>Main Barn 4 Complex A single BLE passed under area B heading off east. Whilst continuous CP passes were recorded though area B.</p>
21:45 – 22:00	<p>Field Barn 1 3 x CP were recorded foraging along the eastern elevation and down towards the south-east.</p> <p>Field Barn 2 During the period 3 x CP passes were recorded towards the northern elevation.</p> <p>Field Barn 3 A brief CP pass was recorded along the front of the southern barn, whilst a single NOC was recorded passing over the site.</p> <p>Main Barn 4 Complex A single BLE was recorded flying along the southern area of the courtyard. A CP was recorded foraging along the northern elevation.</p>
22:00 – 22:15	<p>Field Barn 1 During the period single NOC was recorded foraging over the barn, whilst a single SER and BLE and SP passed from south to north along the northern elevation. A single DAUB was also recorded foraging along the northern elevation of the barn. Infrequent CP passes were recorded along the southern elevation.</p> <p>Field Barn 2 A distant CP pass was recorded along the south-west elevation of the barn, whilst a single CP was also recorded entering a feature between the lintels over the south-west window (internally).</p> <p>Field Barn 3 During the period 3 x CP were recorded passing and foraging towards the southern end of the barns, whilst a single BLE was recorded flying and foraging within the northern barn for the duration of the period.</p> <p>Main Barn 4 Complex During the period a single BARB and BLE was recorded flying in and out of the courtyard. 22:12 a single BLE emerged from eastern end of Barn J, into the courtyard.</p>
22:15 – 22:30	<p>Field Barn 1 During the period a single CP was recorded passing from south to north along the southern elevation.</p> <p>Field Barn 2 During the period occasional CP passes and a single NAT was recorded along the south-west elevation. 2 x BLE passes were recorded along the northern elevation along with 3 x NAT passes.</p> <p>Field Barn 3 A single BLE was recorded passing along the front of the northern barn along with a single NAT pass from west to east over the northern barn. Single CP and SP passes were recorded heading west to east over the northern barn.</p> <p>Main Barn 4 Complex The BARB and BLE was still being recorded flying in and out of the courtyard.</p>

22:30 – 22:45	<p>Field Barn 1 A single DAUB pass was recorded along the northern elevation. Whilst a single SER was recorded towards the southern elevation.</p> <p>Field Barn 2 A single BLE passed close to the south-west of the barn before heading off south. A single SER pass was also recorded along the southern elevation along with very occasional CP passes along the northern elevation.</p> <p>Field Barn 3 During the period single BLE and CP pass was recorded along the northern elevation of the north barn. Whilst a single BLE was recorded flying and foraging within the northern barn for the duration of the period. 2 x NOC passes were also recorded towards the north of the north barn.</p> <p>Main Barn 4 Complex No activity was recorded.</p>
22:45 – 23:00	<p>Field Barn 1 During the period a 2 x CP passes and foraging activity was recorded along with a single NOC pass overhead. Distant SP passes were also recorded towards the southern elevation.</p> <p>Field Barn 2 Infrequent CP passes were recorded during the period along the southern elevation.</p> <p>Field Barn 3 Infrequent CP and a single BLE foraging activity was recorded along the front of both the northern and southern barns.</p> <p>Main Barn 4 Complex A single CP pass was recorded within the courtyard.</p>
Time complete: 22:50	
External Temp: 22.5 C External Humidity: 50%	

Emergence survey on the 22nd August 2019

Sunset time: 20:15	
Time commence: 20:00	Weather: Dry, warm, breezy
External Temp: 20.9 C	External Humidity: 64%
Note: Main Barn Complex - 20:37 1 x Barn Owl emerged from open end of Barn C. A tawny Owl also passed along the south-east corner of Barn C.	
20:00 – 20:15	<p>Main Barn 4 Complex A single CP passed under the canopy of Barn B this was not recorded towards the west or east of Barn B.</p>
20:15 – 20:30	<p>Main Barn 4 Complex 20:27 1 x CP emerged from above eaves level on the south-eastern elevation (near entrance) of Barn C. 20:30 1 x CP emerged from the south-western end of Barn E into courtyard. (Second door from the south-east).</p> <p>During the period brief CP foraging activity was recorded along the treeline towards the north-east of the Barn Complex. A single BLE pass was also recorded heading east to west along the treeline. A single SP was recorded passing from the direction of the church (west) before being recorded passing over the Barn Complex. A single CP and SP were recorded passing high from the west, over the Barn Complex. 2 x CP and a single SP were recorded passing within the main Barn Complex's courtyard.</p>

20:30 – 20:45	<p>Main Barn 4 Complex 20:30 1 x CP emerged from the south-west elevation of Barn C. 20:30 1 x CP emerged from the south-western end of Barn E into courtyard. (Second door from the south-east). 20:34 1 x CP emerged from the south-western end of Barn E into courtyard. (Second door from the south-east).</p> <p>During the period a 2 x CP were recorded foraging around the opening of Barn C heading towards the south-east and along the treeline towards the north-east of the Barn Complex. A single SP and possible NAT pass was also recorded along the north-eastern treeline heading west to east. 20:41 possible SP emergence from a raised ridge tile towards the open end of Barn C. Constant foraging activity from 2 x CP was recorded around the opening to Barn L. A single BARB was recorded within the main Barn Complex's courtyard.</p>
20:45 – 21:00	<p>Main Barn 4 Complex 20:45 1 x PIP emerged from the eaves / under the guttering towards the right of Barn I. 20:58 1 x NAT recorded entering into the eastern end of Barn J a further 2 x NAT were also recorded within the main Barn Complex's courtyard.</p> <p>Towards the south-east of Barn C, occasional SP and infrequent passes from up to 2 x CP were recorded (over grassy area) and up to the trees along the north-eastern boundary. A single BLE pass was also recorded along the north-eastern treeline. 2 x NAT passes along with brief CP foraging activity by single bats, was recorded along the southern elevation of Barn E. A single NAT was also recorded passing along the north of Barn J and I. Constant foraging activity from 2 x CP was recorded around the opening to Barn L.</p>
21:00 – 21:15	<p>Main Barn 4 Complex During the period 2 x (brief) NAT passes were recorded towards the south-east of Barn C. Occasional CP passes were also recorded towards the south-east of Barn C heading up towards the trees along the north-eastern elevation of the Barn Complex, where foraging activity was recorded. Up to 3 x NAT and 2 x CP were recorded foraging over and towards the west of Barn I and L throughout the period. Occasional CP and NAT passes were recorded throughout the period within the main Barn Complex's courtyard.</p>
21:15 – 21:30	<p>Main Barn 4 Complex Occasional CP passes were recorded towards the south of Barn C. A possible BARB pass was recorded along the north-eastern treeline along with up to 2 foraging CP and SP. Occasional to frequent CP passes were recorded towards the south-western elevation of Barn E. A single NAT pass was also recorded along the south-western elevation of Barn E. A single CP and a brief NAT pass was recorded around Barn L. A single CP was recorded continuously flying within the main Barn Complex's courtyard, whilst a single NAT was recorded passing up and down the southern elevation of Barn J. A single BARB was recorded circling the main Barn Complex's courtyard before disappearing.</p>
21:30 – 21:45	<p>Main Barn 4 Complex 21:35 1 x BLE went to roost against the internal eastern wall of Barn E, against Barn C.</p> <p>A single faint SP pass was recorded towards the north-east of the main Barn Complex. Occasional to frequent CP passes were recorded towards the south-western elevation of Barn E throughout the period. 2 x CP were also recorded throughout the period, foraging along the northern and western elevations of Barn L.</p>
21:45 – 22:00	<p>Main Barn 4 Complex During the period a single SP pass along with a single CP foraging was recorded towards the south of Barn C. Occasional to frequent CP passes were recorded towards the south-western elevation of Barn E throughout the period. 2 x CP were also recorded foraging along the northern and western elevations of Barn L whilst 2 x CP were also recorded foraging within the main Barn Complex's courtyard throughout the period.</p>
Time complete: 22:00	

External Temp: 17.8 C	External Humidity: 76%
-----------------------	------------------------

Emergence survey on the 10th September 2019

Sunset time: 19:25	
Time commence: 19:10	Weather: Clear, still, dry
External Temp: 16.0 C	
Note: Main Barn Complex - 20:13 - Tawny owl calling Field Barn 3 - Barn owl was recorded in northern barn. A hedgehog was recorded leaving the northern elevation of the northern barn.	
19:00 – 19:15	Field Barn 1 No activity was recorded. Field Barn 2 No activity was recorded. Field Barn 3 No activity was recorded. Main Barn 4 Complex No activity was recorded.
19:15 – 19:30	Field Barn 1 No activity was recorded. Field Barn 2 19:25 – 20:01 a single CP was recorded foraging within the barn (presumed to have emerged from within). Field Barn 3 No activity was recorded. Main Barn 4 Complex 19:28 a single CP was recorded passing towards the east of Barn G. 19:29 possible BARB pass along the south of Barn J before passing under Barn B.
19:30 – 19:45	Field Barn 1 No activity was recorded. Field Barn 2 Over the period occasional CP passes and foraging activity was recorded. Field Barn 3 No activity was recorded. Main Barn 4 Complex 19:32 a single BLE pass was recorded towards the north of Barn I. 19:41 A single CP passed from the south-west around to the western elevation of Barn I and back again.
19:45 – 20:00	Field Barn 1 19:49 a single SP was recorded foraging along the eastern gable end, over the period. 19:55 a single CP was recorded foraging along the eastern gable end over the period. Field Barn 2 19:52 a single SP passed over from the south to the north before foraging over the field to the north of the barn.

Sunset time: 19:25	
	<p>Field Barn 3 Distant CP and SP passes were recorded over the grassland towards the west of the barn over the period.</p> <p>Main Barn 4 Complex 19:37 1 x CP passed from east to west over the courtyard. 19:40 1 x CP passed over Barn E (possible emergence). A single SP passed under Barn B. 19:41 1 x SP emerged from a crack in the north-west corner of Barn C. 19:48 1 x CP passed from the church in the west along the southern elevation of Barn E before passing along the eastern elevation of Barn C. 19:48 2 x CP were recorded passing from the east over Barn I off towards the south-west. 19:49-19:20 frequent CP passes and foraging activity over Barn I and over Barn E. 19:47 a single BLE was recorded flying within the western end (central) of Barn J. 19:52 a single NAT passed from under Barn B, a single SP was also recorded foraging under Barn B. Over the period frequent CP and the occasional SP pass.</p>
20:00 – 20:15	<p>Field Barn 1 No activity was recorded.</p> <p>Field Barn 2 Over the period 2 x CP were recorded passing over the barn from the south heading north. A second CP joined the CP flying internally at 20:05.</p> <p>Field Barn 3 20:05 a CP was briefly recorded foraging along the western elevation of the northern barn. 20:13 a PIP was seen flying within the southern end of the northern barn. 20:14 possible PIP emergence from under a tile on the western elevation of the southern barn.</p> <p>Main Barn 4 Complex 20:00- 21:08 continual CP foraging activity over Barn I. 20:07 1 x CP entered under a tiled on the apex of the southern elevation of Barn C. 20:08 1 x CP flying within Barn C. Frequent CP and occasional SP passes were recorded towards the south-west corner of the courtyard over the period.</p>
20:15 – 20:30	<p>Field Barn 1 No activity was recorded.</p> <p>Field Barn 2 Up to 2 x CP were constantly flying around the western elevation of the barn over the period, whilst the original CP began flying within and out of both the western and eastern elevations before returning.</p> <p>Field Barn 3 20:18 a single BLE was recorded passing from the south along the western elevation of the northern barn.</p> <p>Main Barn 4 Complex A single BLE was perched up within Barn E through the period. 20:17 a single BLE flew from Barn E towards Barn B before being recorded flying within Barn J then back in Barn J by 20:29-20:30. 20:20 – 20:26 a single BLE foraging under Barn B. Frequent CP passes were also recorded within the centre of the complex.</p>
20:30 – 20:45	<p>Field Barn 1 A single CP was recorded occasionally foraging around the western elevation of the barn.</p> <p>Field Barn 2 No activity was recorded.</p>

Sunset time: 19:25	
	<p>Field Barn 3 No activity was recorded.</p> <p>Main Barn 4 Complex 20:38 a single CP entered into a crack in the north-west corner of Barn C (lower than SP emergence at 19:41). 20:44 a single BLE entered (center) of Barn J. Occasional CP and very occasional SP passes were recorded towards the south-west corner of the courtyard over the period.</p>
20:45 – 21:00	<p>Field Barn 1 20:55 1 x SER passed from south to the north along the access track.</p> <p>Field Barn 2 20:55 a single SER passed from Barn 1 over Barn 2. Regular CP foraging activity around and occasionally into the barn was recorded from up to 2 bats. Very occasional SP passes were also recorded over the period.</p> <p>Field Barn 3 20:48 a single CP passed from the west over towards the east. 20:52 a single CP was recorded foraging within the northern barn.</p> <p>Main Barn 4 Complex 21:51 A single BLE was recorded with Barn E.</p>
21:00 – 21:15	<p>Field Barn 1 No activity was recorded.</p> <p>Field Barn 2 Regular CP foraging activity around and occasionally into the barn was recorded from up to 2 bats. Very occasional SP passes were also recorded over the period.</p> <p>Field Barn 3 No activity was recorded.</p> <p>Main Barn 4 Complex 21:06 a single NAT passed from the west heading east over Barn I. 21:08 a single CP entered above the sliding door on the western elevation of Barn C. 21:10 a single BLE was recorded towards the north of Barn I.</p>
21:15 – 21:30	<p>Field Barn 1 No activity was recorded.</p> <p>Field Barn 2 Regular CP foraging activity around and occasionally into the barn was recorded from up to 2 bats. Very occasional SP passes were also recorded over the period.</p> <p>Field Barn 3 21:09 a single PIP was recorded flying within the southern barn.</p> <p>Main Barn 4 Complex No activity was recorded.</p>
Time complete: 21:10	
External Temp: 13.0 C	

Emergence survey on the 20th August 2020 – Field Barn 1

Sunset time: 20:10	
Time commence: 19:55 External temp: 22.5 C	Weather: Dry, clear and still External humidity: 24%
Note: 18:36 a single barn owl was recorded entering Barn C on the main barn complex.	
19:45 – 20:00	No activity was recorded.
20:00 – 20:15	No activity was recorded.
20:15 – 20:30	A single SP passed from the west along the northern elevation of the barn before heading east.
20:30 – 20:45	A single CP passed from the west along the northern elevation of the barn before heading east. A single BLE passed along the northern elevation of the barn before heading east. Occasional CP and BLE passes were also recorded towards the south of the barn.
20:45 – 21:00	20:45-20:50 1 x BLE was recorded flying within the barn (this was seen to emerge from some tarpaulin draped over one of the rafters). An occasional CP, SP and BLE pass was also recorded along the northern elevation of the barn.
21:00 – 21:15	21:00 – 21:40 1 x BLE was recorded hanging up at the east end of the ridge – presumed to be the same bat recorded at 20:45-20:50 An occasional CP and BLE pass were also recorded along the northern elevation of the barn.
21:15 – 21:30	An occasional CP and BLE pass were also recorded along the northern elevation of the barn. Occasional CP and BLE passes were also recorded towards the south of the barn.
21:30 – 21:45	An occasional CP and BLE pass were also recorded along the northern elevation of the barn.
21:45 – 22:00	2 x CP were recorded circling the barn throughout the period.
Time complete: 21:55	
External temp: 16.5 C External humidity: 31%	

Emergence survey on the 20th August 2020 – Field Barn 2

Sunset time: 20:10	
Time commence: 19:55 External temp: 22.5 C	Weather: Dry, clear and still External humidity: 24%
Note: A single barn owl was recorded flying close to the western elevation of the barn.	
19:45 – 20:00	No activity was recorded.
20:00 – 20:15	No activity was recorded.
20:15 – 20:30	No activity was recorded.
20:30 – 20:45	20:43 2 x BLE were recorded foraging up and down the ridge internally (one was seen to emerge via the south-west corner and the other hung-up when the torch was shone on them). 2 x BLE (prior to those recorded in the barn) were recorded foraging towards the south-east of the barn.
20:45 – 21:00	A single CP passed from east to west along the eastern elevation. Occasional passes from a single CP and up to 2 x BLE were also recorded along the eastern elevation.
21:00 – 21:15	A SP was recorded passing to the south of the barn, along with a single CP and BLE. Occasional passes from a single CP were recorded along the eastern elevation.
21:15 – 21:30	21:19 1 x CP entered the barn via the open doorway on the east elevation – this was recorded foraging within the barn at 21:23.
21:30 – 21:45	Regular CP foraging activity was recorded as a single bat passes in and out of the barn on the west elevation. Occasional CP and BLE passes were recorded towards the east elevation of

	the barn. Constant activity from a single SER was recorded towards the east of the barn from 21:38 onwards.
21:45 – 22:00	Regular CP foraging activity was recorded as a single bat passes in and out of the barn.
Time complete: 21:55	
External temp: 16.5 C External humidity: 31%	

Emergence survey on the 1st September 2020 – main Barn Complex

Sunset time: 19:45	
Time commence: 19:30	Weather: Dry, still, clear
External temp: 16.0 C	
Note: A single barn owl was seen to emerge from Barn C.	
19:30 – 19:45	No activity recorded.
19:45-20:00	A single SP passed from the south-west heading north-west along the west elevation of the barn complex.
20:00 – 20:15	<p>20:02 1 x CP foraging within the open front of Barn C (came from within the barn).</p> <p>20:03 1 x CP emerged from the north-east end of Barn J.</p> <p>20:03 1 x SP emerged from the west door (to the right) of Barn C.</p> <p>20:03 1 x SP emerged from behind the water tank against the west elevation of Barn C.</p> <p>20:03 – 20:18 3 x PIP emerged from the west door (to the right) of Barn C.</p> <p>20:04 1 x CP emerged from the open southern elevation of Barn C.</p> <p>20:05 1 x CP (possibly) emerged from the ridge/ roof externally on Barn C, before heading of north-east.</p> <p>20:05 1 x CP still flying internally within Barn C.</p> <p>20:08 1 x CP passed from the north-east before heading into the open southern elevation of Barn C.</p> <p>20:13 2 x CP flying internally within Barn C, by 20:19 only 1 x CP was seen flying within Barn C.</p> <p>A single SP passed over Barn C before heading north-east. along with the occasional CP pass from the west heading east. A single CP passed from the south before foraging along the west elevation from 20:09-20:30. A single SP pass was also recorded towards the north-west along with a single NOC recorded passing from the south-west of the north-east. A single CP passed from the north via the courtyard and out under Barn B, 2 further CP were recorded flying under Barn B and back into the courtyard.</p>
20:15 – 20:30	During the period a single SP passed from the south whilst a single CP was recorded flying in and out of the open southern elevation of Barn C. An occasional CP and a single BLE passed from east to west along the trees towards the north-east corner of the site and the north-west corner.
20:30 – 20:45	<p>20:45 1 x SP emerged from the north-east end of Barn J.</p> <p>A single CP was recorded flying in and out of the open southern elevation of Barn C throughout the period. A single CP passed towards the south-east of Barn E. Continuous foraging from a single CP was recorded along the west elevation up to the north-west corner of the site.</p>
20:45 – 21:00	<p>20:49 1 x CP emerged from Barn C before heading south.</p> <p>20:54 1 x PIP entered the west door (to the right) of Barn C.</p> <p>Occasional foraging from a single CP was recorded along the west elevation up to the north-west corner of the site.</p>
21:00 – 21:15	<p>21:00 1 x PIP entered the wall centrally towards the southern end of Barn C (west elevation).</p> <p>21:04 1 x CP dropped out of roof inside of Barn C before emerging from the open southern elevation.</p> <p>21:05 1 x CP dropped out of roof inside of Barn C before emerging from the open southern elevation.</p> <p>21:08 1 x CP dropped out of roof inside of Barn C before emerging from the open southern elevation.</p> <p>A single BLE and CP were recorded to the south of Barn C. Occasional foraging from a single CP was recorded along the west elevation up to the north-west corner of the site.</p>

21:15 – 21:30	21:08 1 x PIP entered a crack in the north-west corner of Barn C (west elevation). 21:08 1 x PIP emerged from the west door (to the right) of Barn C.
Time complete: 21:30	
External temp: 7.9 C	

APPENDIX C REPTILE SURVEY TABLE

Survey 1	Survey 2	Survey 3	Survey 4	Survey 5	Survey 6	Survey 7
12th September 2019 15 degrees celcius Dry, F2 S wind, 30% cc 13:00 Start	16th September 2019 15 degrees celcius Dry, F1 W wind, 20% cc 11:30 Start	20th September 2019 17 degrees celcius Dry, F2 S wind, 70% cc 14:00 Start	23rd September 2019 17 degrees celcius Dry, F1 SW wind, 50% cc 15:00 Start	25th September 2019 14 degrees celcius Dry, still, 20% cc 12:00 Start	27th September 2019 16 degrees celcius Dry, F1 W wind, 50% cc 13:00 Start	30th September 2019 17 degrees celcius Dry, F1 SW wind, 30% cc 14:00 Start
No reptiles	No reptiles	No reptiles	No reptiles	No reptiles	No reptiles	No reptiles
				1 short-tailed field vole	1 short-tailed field vole	1 short-tailed field vole

APPENDIX D BAT FRIENDLY CHEMICALS

Marketing Company and Product Name	Type ²	User ³	Active ingredients ⁴	HSE No	EU BPR No.
Akzo Nobel Coatings Ltd					
Cuprinol Trade Decorative Preserver (BP)	S	A	IPBC, Tebuconazole		UK-2012 -0384
Cuprinol Trade Quick Drying Wood Preserver Clear (BP)	W	A	Propiconazole, IPBC		UK-2013-0790
Dulux Trade Weathershield Naked Wood Basecoat (BP)	W	A	Propiconazole, IPBC		UK-2013-788
Dulux trade Weathershield Preservative Primer + (BP)	W	A	Propiconazole, IPBC		UK-2013-0792
Assured Products Ltd					
Spear and Jackson Triple Action Wood Treatment	M	A	Propiconazole, IBPC, Permethrin	10116	
Spear and Jackson Woodworm Killer	M	A	Permethrin	10117	
Crown Paints					
Sadolin Quick Dry Wood Preserver	W	A	Propiconazole, IPBC		UK-2013-0793
Enviroquet GPT Ltd					
Lignum Pro 162.5 (BPR)	Wc	P	Permethrin	9894	
Lignum pro D156 (BPR)	Wc	P	Propiconazole, IPBC, Permethrin	9895	
Lignum Universal Wood Preserver (BPR)	W	A	Propiconazole, IBPC, Permethrin	9896	
Lignum Woodworm Killer (BPR)	W	A	Permethrin	9897	
Lignum Wood Preserver (BPR)	W	A	Propiconazole, IPBC, Permethrin	10145	
Lignum Pro Gel (BPR)	Pa	P	Propiconazole, IPBC, Permethrin	10154	
Larson Building Products					
Larsen Construction Timber preserver	M	A	Propiconazole, IPBC, Permethrin	10129	
Larson Low Odour Woodworm Killer	M	A	Permethrin	10138	
Larson Low Odour Universal Wood Preservative	M	A	Propiconazole, IPBC, Permethrin	10132	
Morells Woodfinishes Limited					
Omnia Preserve	W	A	Propiconazole, IPBC		UK-2013-0794
Permagard Products Limited					
Permagard Woodworm Killer (BPR)	W	A	Permethrin	10136	
Permagard Universal Wood Treatment (BPR)	W	A	Propiconazole, IPBC, Permethrin	10133	

Marketing Company and Product Name	Type ²	User ³	Active ingredients ⁴	HSE No	EU BPR No.
PPG Agritectural Coatings UK Limited					
Johnstones Trade Woodworks All Purpose Preserver	S	A	Propiconazole, IPBC, Permethrin	10135	
Johnstone's Woodcare Wood Preserver	M	A	Propiconazole, IPBC, Permethrin	10134	
PPG Coatings Danmark A/S					
Bondex Preserve II	W	A	Propiconazole, IPBC, Permethrin	10128	
Premier Q Coatings Limited					
Premier Q Woodworm Killer (BPR)	S	A	Permethrin	10220	
Premier Q Triple Action Wood Treatment (BPR)	S	A	Propiconazole, IPBC, Permethrin	10221	
Protim Solignum Ltd Trading As Koppers					
Endcoat Wood Preservative	S	A	Propiconazole		UK-2014-0841
Rentokil Initial					
Deadline Woodworm Treatment	W	P	Permethrin, IBPC, Tebucanazole, Propiconazole	10237	
Woodworm Treatment Solution	W	P	Permethrin, IBPC, Tebucanazole, Propiconazole	10235	
Woodworm Treatment Fluid	W	A	Permethrin, IBPC, Tebucanazole, Propiconazole	10236	
Rustins Ltd					
Rustins Advanced Wood Preserver (BPR)	M	A	Propiconazole, IPBC, Permethrin	10048	
Safeguard Europe Ltd					
Solugaurd Woodworm Treatment (BPR)	M	A	Propiconazole, IPBC, Permethrin	10137	
Solugaurd Woodworm and Rot Treatment (BPR)	M	A	Propiconazole, IPBC, Permethrin	10139	
Sherwin-Williams Diversified Brands Limited					
Ronseal Total Clear Wood Preserver (MP)	S	A	Propiconazole, IPBC, Permethrin	10021	
Ronseal Woodworm Killer (MP)	S	A	Permethrin	10026	
Ronseal Multi-Purpose Woodworm Treatment (MP)	S	A	Propiconazole, IPBC, Permethrin	10027	
Ronseal Multi-purpose woodworm Treatment (LC)	S	A	Propiconazole, IPBC, Permethrin	10130	
Sovereign Chemicals Ltd					
Sovac Woodworm Killer (BPR)	Mc	P	Permethrin	10125	
Sovereign Boron Timber Rod	R	P	Disodium Octaborate		UK-2013-0798

Marketing Company and Product Name	Type ²	User ³	Active ingredients ⁴	HSE No	EU BPR No.
Deepkill Timber Preservative Cream	Pa	A	Propiconazole, IPBC, Permethrin	10149	
Sovaq Dual Purpose Timber Treatment	Mc	P	Propiconazole, IPBC, Permethrin	10126	
Sovereign Timber preservative	S	A	Propiconazole, IPBC		UK-2016-1021
STV International Limited					
Defenders Triple-Action Timber Protector	M	A	Propiconazole, IPBC, Permethrin	10224	
Zero In Woodworm Destroyer	M	A	Permethrin	10202	
Troy					
TWP 085	W	A	Propiconazole, IPBC		UK-2013-0782
TWP 077	S	A	Propiconazole, IPBC		UK-2013-0781
Wykamol Group Ltd					
Microtech Dual C RTU (BPR)	M	A	Propiconazole, IPBC, Permethrin	10198	
Microtech Woodworm RTU (BPR)	M	A	Permethrin	10201	
Microtech Dual P RTU (BPR)	M	A	Propiconazole, IPBC, Permethrin	10208	

- 1 Products on the list are those that have come to the attention of Natural England; other suitable products may also be available. Pretreatment and decorative products are not included. The efficacy of particular products in particular situations is the responsibility of the manufacturer and no endorsement is given or implied. These products have approval under the Control of Pesticides Regulations (COPR), the EU Biocides Regulation 528/2012 (EU BPR), or are listed on the Biocides Certificate of Exemptions
- 2 A Aerosol product S Solvent-based product W Aqueous solution, ready for use Wc Aqueous solution concentrate, to be diluted with water Mc Microemulsion concentrate; to be diluted with water to form a micro emulsion R Solid rod, for insertion into pre-drilled hole Pa Bodied paste
- 3 3 P Cleared for professional use only A Cleared for professional and amateur use (a DIY product)
- 4 4 IPBC is an abbreviation for 3-Iodo-2-Propynyl-N-Butyl Carbamate Flurox is an abbreviation for Flufenoxuron

INSECTICIDES

Company and Product name	App. Method ²	User ³	Active ingredients	HSE No ⁴
151 Products Limited				
Pestshield New Formula Fly and Wasp Killer	Spray	A	Permethrin, Tetramethrin	8987
Agropharm Ltd				
Protector Flying and Crawling Insect Killer	Sur.	A	Pyrethrins, Cypermethrin	8646
Agropharm's Dairy Fly Spray	Sur.& Space	A	Pyrethrins	9249
Barrettine Environmental Health				
Fly-Expire Sst	Sur. & Space	P	Pyrethrins	8112
Flymax	Sur. & Space	P	Permethrin	8903
BASF Plc				
Sorsec Wasp Nest Destroyer	Sur.	P	Tetramethrin, D-Phenothrin	9294
Sorex Super Fly Spray	Sur.	P	d-Phenothrin	6297
Bayer Cropscience Ltd				

Company and Product name	App. Method ²	User ³	Active ingredients	HSE No 4
Bayer Flying Insect Killer	Sur. & Space	A	D-tetramethrin, D-Phenothrin	8771
Aquapy	Sur. & Space	P	Pyrethrins	5799
K-Othrine SC 10	Sur.	P	Deltamethrin	5097
Aqua K-Othrine	Space	P	Deltamethrin	6027
K-Othrine WG 250	Sur.	P	Deltamethrin	8092
Cobweb UK Ltd				
Waspaway	Sur. & Space	A	Permethrin, tetramethrin	9257
Copyr Spa				
Flyspray	Sur. & Space	A	Pyrethrins	9270
Hockley International Ltd				
Hockley Py-Pro Fly Spray	Sur. & Space	P	Pyrethrins	8156
Homebase Ltd				
Homebase Fly and Wasp Killer	Sur. & Space	A	Permethrin, tetramethrin	8496
Lodi UK Limited				
Insecto Fly and Wasp Destroyer	Sur.	A	Permethrin, tetramethrin	9317
Insecto Wasp Destroyer	Sur.	A	Permethrin, tetramethrin	9318
Marks and Spencer PLC				
Marks ad Spencer Insect Killer Formula Destroy Fast Acting Mosquito Fly and Wasp Killer	Sur. & Space	A	D-Phenothrin, tetramethrin	8363
Miswa Chemicals Ltd				
Polygard Kilit Insecticide for Flying and Crawling Insects	Sur. & Space	A	D-Allethrin, D-tetramethrin, permethrin	7904
Polyguard kilit Flying and Crawling Insect Killer	Sur. & Space	A	D-Phenothrin, D-tetramethrin, Cypermethrin	8606
Net-TEX Trading Limited				
Fly and maggot Killer	Sur.	A	Permethrin, Cypermethrin	8614
Terminal Flying Insect Killer	Sur. & Space	A	Permethrin, Tetramethrin, D-Phenothrin Pyrethrins	8878
Pelgar International Ltd				
Peglar Super Strength Fly Spray	Sur. & Space	P	Permethrin, Tetramethrin	7832
Polly Products				
Fly Killer	Trigger	A	Permethrin, Tetramethrin	9339
Reabrook Limited				
Arrow Flying and Crawling Insect Killer	Sur. & Space	A	D-Phenothrin, Tetramethrin	8670
Rentokill Initial UK Ltd				
Rentokill Fly, Ant and Wasp Control	Spray	A	D-Phenothrin, Tetramethrin	8456
Rentokill Fly, Ant and Wasp Spray	Sur. & Space	A	D-Allethrin, Permethrin	8460
Fly Killer Bin Spray	Sur. & Space	A	Cypermethrin	8869
Insectaban liquid	Fogger and Spray	P	Permethrin	6216
Schippers Uk Ltd				
Ms Aza-Fly	Sur.	P	Azamethiphos	8927
Spotlesspunch UK Ltd				
Vape Super Ko2 Fly and Mosquito Killer	Sur. & Space	A	D-Phenothrin, D-Tetramethrin	8666
STV International Ltd				
STV Wasp Killer	Spray	A	Pyrethrins	9047
STV Np Fly, Moth & Mosquito Killer	Spray	A	Pyrethrins	9048
STV Fly, Moth & Mosquito Killer Spray	Spray	A	Cypermethrin	9050

Company and Product name	App. Method ²	User ³	Active ingredients	HSE No 4
STV Np Fly, Moth & Mosquito Killer Rtu	Spray	A	Pyrethrins	9059
Zero in Flying Insect Killer	Spray	A	Pyrethrins	9103
Zero in Fly & Wasp Killer	Sur. & Space	A	D-Phenothrin, Tetramethrin	9108
Zero in Fly Wasp Nest Killer Foam	Sur.	A	D-Phenothrin	9185
Zero in Wasp Nest Killer Foam	Sur.	A	Permethrin, Tetramethrin	9245
STV Pro Control Wasp Nest Killer Foam	Sur.	P	D-Phenothrin	9322
SX Environmental Supplies Ltd				
SX Pro Flying and Crawling Insect Killer	Sur. & Space	P	Tetramethrin, D- Phenothrin	9236
SX Pro Wasp Killer Foam Nest Treatment	Sur.	P	Permethrin, Tetramethrin	9244
Tesco ltd				
Tesco Mosquito Fly and Wasp Spray	Sur. & Space	A	D-Phenothrin, Tetramethrin	8362
W Neudorff GmbH Kg				
Permanent Wasp Spray	Sur.	A	Pyrethrins	8959
Westland Horticulture Limited				
Eraza Fly & Wasp Killer	Sur. & Space	A	Tetramethrin, D- Phenothrin	9194
Eraza 24 hr Wasp nest Destroyer	Sur.	A	Permethrin, Tetramethrin	9209
Wilkinson Hardware Stores Ltd				
Wilco Flying & Crawling Insect Killer	Sur. & Space	A	D-Phenothrin, Tetramethrin	7851
Wilco Foaming Wasp Nest Destroyer	Spray	A	Permethrin, Tetramethrin	9286

¹ Products on the list are those that have come to the attention of Natural England; other suitable products may also be available. The efficacy of particular products in particular situations is the responsibility of the manufacturer and no endorsement is given or implied. At the time of writing (30 March 2012), these products have approval under the COPR Biocide Directive (Annex A) or list of exemptions.

² Sur. Surface spray
 Sur. & Space Surface and space spray
 Space Treat. & Sur. Space treatment and surface spray
 Trigger Spray

³ P Cleared for professional use only

A Cleared for professional and amateur use (a DIY product)

⁴ Health and Safety Executive (HSE), to search the pesticides databases, go to www.hse.gov.uk/biocides/index.htm

APPENDIX E BAT FRIENDLY PLANTING

Which plants should I choose?

Bat-friendly gardeners should aim to plant a mixture of flowering plants, vegetables, trees and shrubs to encourage a diversity of insects, which in turn may attract different bat species. Flowers that bloom throughout the year, including both annuals and herbaceous perennials, are a good idea: night-flowering blossoms attract night-flying insects. Trees and shrubs provide food for insects and roosting opportunities for bats.

Approximate flowering periods are listed below, although they may vary according to area and weather conditions!

Flowers for borders

- *Aubretia (spring to early summer)
- *Candytuft (summer to autumn)
- *Cherry pie (summer to autumn)
- Corncockle
- Cornflower
- Corn marigold
- Corn poppy
- *Echinacea
- English Bluebell (spring)
- *Evening primrose (summer to autumn)
- Field poppies (summer)
- *Honesty (spring)
- *Ice plant 'Pink lady' (early autumn)
- Knapweed (summer to autumn)
- Mallow (summer to autumn)
- *Mexican aster (summer to autumn)
- *Michaelmas daisy (summer to autumn)
- *Night-scented stock (summer)

- Ox-eye daisy (summer)
- *Phacelia (summer to autumn)
- *Poached egg plant (summer)
- Primrose (spring)
- Red campion (spring)
- *Red valerian (summer to autumn)
- Scabious (summer)
- St John's wort (spring)
- *Sweet William (summer)
- *Tobacco plant
- *Verbena (summer to autumn)
- *Wallflowers (spring to early summer)
- Wood forget-me-not (spring)
- Yarrow (early summer)



Plants marked * are hybrids or exotics that may be useful in the garden



Herbs (both leaves & flowers are fragrant)

- | | |
|-----------------------------------|---------------------------------------|
| Angelica | Hyssop (summer to early autumn) |
| Bergamot (summer to early autumn) | Lavenders |
| Borage (spring to early autumn) | Lemon balm |
| Coriander (summer) | Marjoram (summer) |
| English marigolds | Rosemary (spring) |
| Fennel (summer to early autumn) | Sweet Cicely (spring to early summer) |
| Feverfew (summer to autumn) | Thyme (summer) |

**Philip Parker Associates Ltd
White Row Cottage
Leziate Drove
Pott Row
King's Lynn
PE32 1DB**

**Tel : 01553 630842 Mob : 07850 275605
Email : admin@philipparkerassociates.co.uk**