

CLIENT :  
VOLVO

PROJECT :  
EXTERNAL SIGNAGE

SITE REFERENCE :  
LISTERS LEAMINGTON SPA

PRODUCT TYPE/DOCUMENT TITLE :  
SITE SCHEDULE



DRAWING / DOCUMENT No :  
SS-VOL-V24669-1

ISSUE :  
**2**      DATE :  
**20.04.22**

DESIGN STATUS :  
**NOT FOR CONSTRUCTION**

## DESIGN REGISTER

Our design information is issued as a multi-page document. Each document has a unique number and each drawing or page a sequential number of that. Individual drawings/pages within a document have a revision status marked by a letter and a red rev' cloud on the drawing. Each document issue is marked by a number, the table below provides a history of this document.

ISSUE :	DATE :	DESIGNER :	CHECKED :	APPROVED :	DESIGN STATUS :	SUMMARY OF ISSUE :
1	24.02.22	KG	KG	CM	NOT FOR CONSTRUCTION	DRAWING FIRST ISSUE
2	20.04.22	KG	KG	CM	NOT FOR CONSTRUCTION	DRWING PACK UPDATED

## RISK ELEMENTS

During design development risks are identified on drawings/pages using a bold red dashed box. This could be information or detail yet to be confirmed leading to risk in proceeding or ones that remain in the design but highlighted to reduce risk to construction, safety, health or the environment. The table below shows numbered risks and how these have been managed.

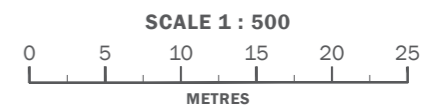
RISK No :	DESCRIPTION OF RISK :	RESOLUTION AGREED :
-	-	-

INDICATED BY : - - - - -





- A 3580mm x 5510mm Pylon Sign
- B 3.8m Wall Mounted Monolith Sign - 2 QTY
- C Built Up Letters
- D 600mm x 400mm Opening Hours Sign
- E 1330mm x 2000mm Directional Totem
- F Single Leg Parking Sign - 'P' Logo - 4 QTY
- G Single Leg Parking Sign - 'Parent & Child' Logo - 1 QTY
- H Single Leg Parking Sign - 'Disabled' Logo - 2 QTY
- J 6m Selekt Flag Pole - 3 QTY
- K 1038mm x 2120mm Selekt Comms Panel
- L 488mm x 1820mm Selekt Totem - 2 QTY
- M 10m Selekt Wall
- N 4.8m Entrance Portal



**SITE PLAN**  
SCALE 1:500



CLIENT :  
VOLVO

PROJECT :  
EXTERNAL SIGNAGE

SITE REFERENCE :  
LISTERS LEAMINGTON SPA

PRODUCT TYPE/DOCUMENT TITLE :  
SITE SCHEDULE

PAGE TITLE :  
SITE PLAN

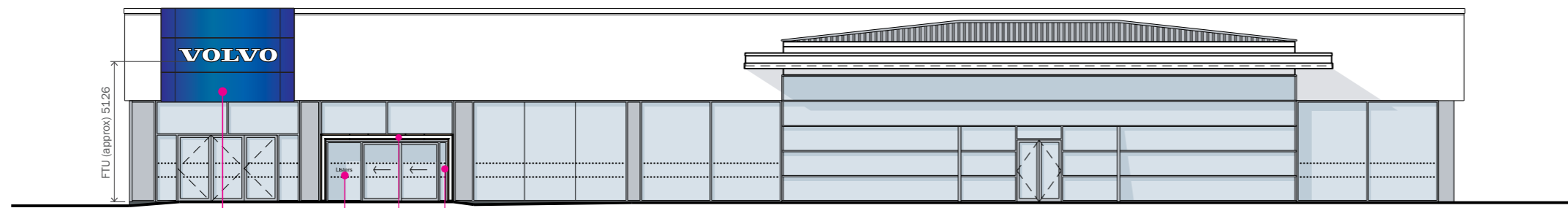
DRAWING NO :  
SS-VOL-V24669-1.1

DESIGN STATUS :  
**NOT FOR CONSTRUCTION**

PAGE : 1/17

REV : BY: SCALE @ A3 :  
B KG AS SHOWN

ISSUE : DATE :  
2 20.04.22



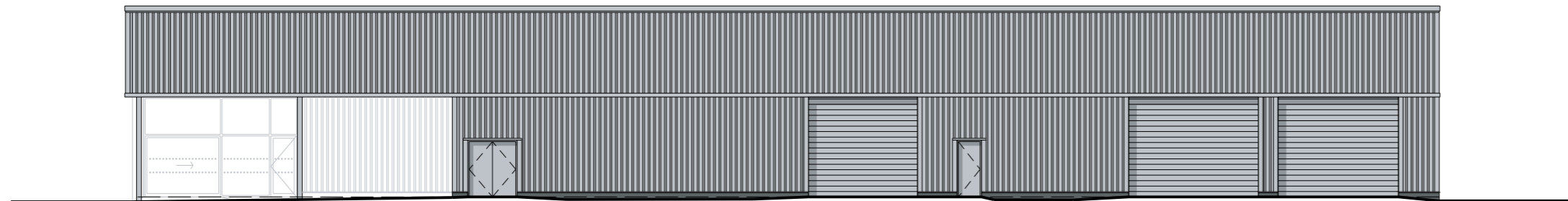
**SOUTH ELEVATION**  
scale 1:200

**BUILT UP LETTERS**  
565mm x 150mm  
HTUS - 1100mm.

**OPENING HOURS SIGN**  
600mm x 400mm

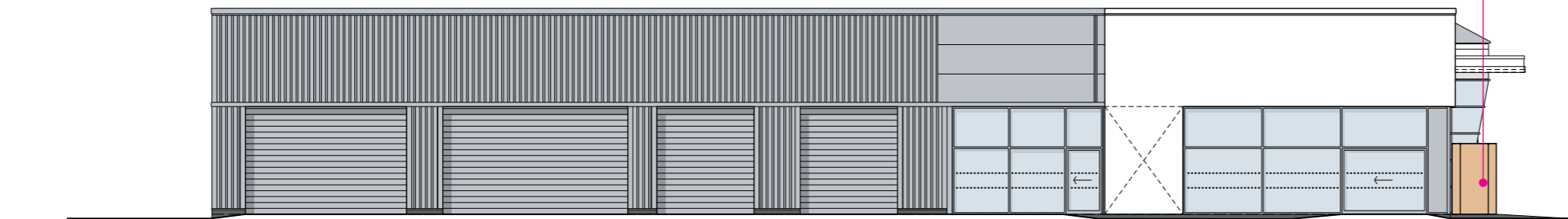
**WALL MOUNTED MONOLITH**  
4800mm x 3340mm  
HTUS - approx 3665mm.

**ENTRANCE PORTAL**  
4800mm x 2427mm



**NORTH ELEVATION**  
scale 1:200

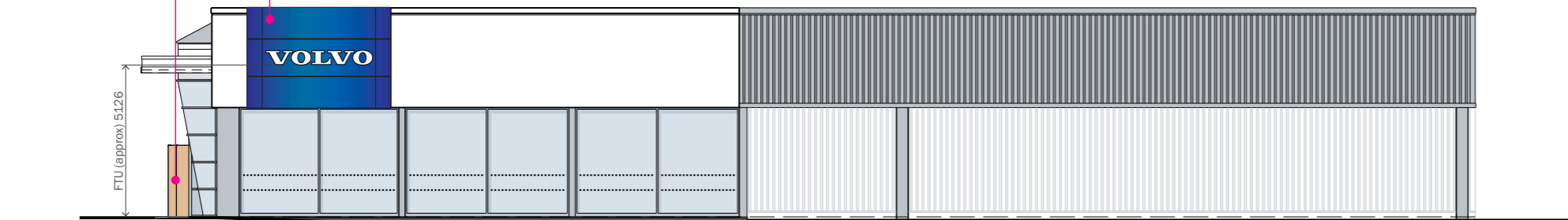
**ENTRANCE PORTAL**  
4800mm x 2427mm



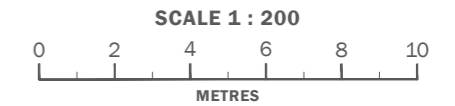
**WEST ELEVATION**  
scale 1:200

**ENTRANCE PORTAL**  
4800mm x 2427mm

**WALL MOUNTED MONOLITH**  
4800mm x 3340mm  
HTUS - approx 3665mm.



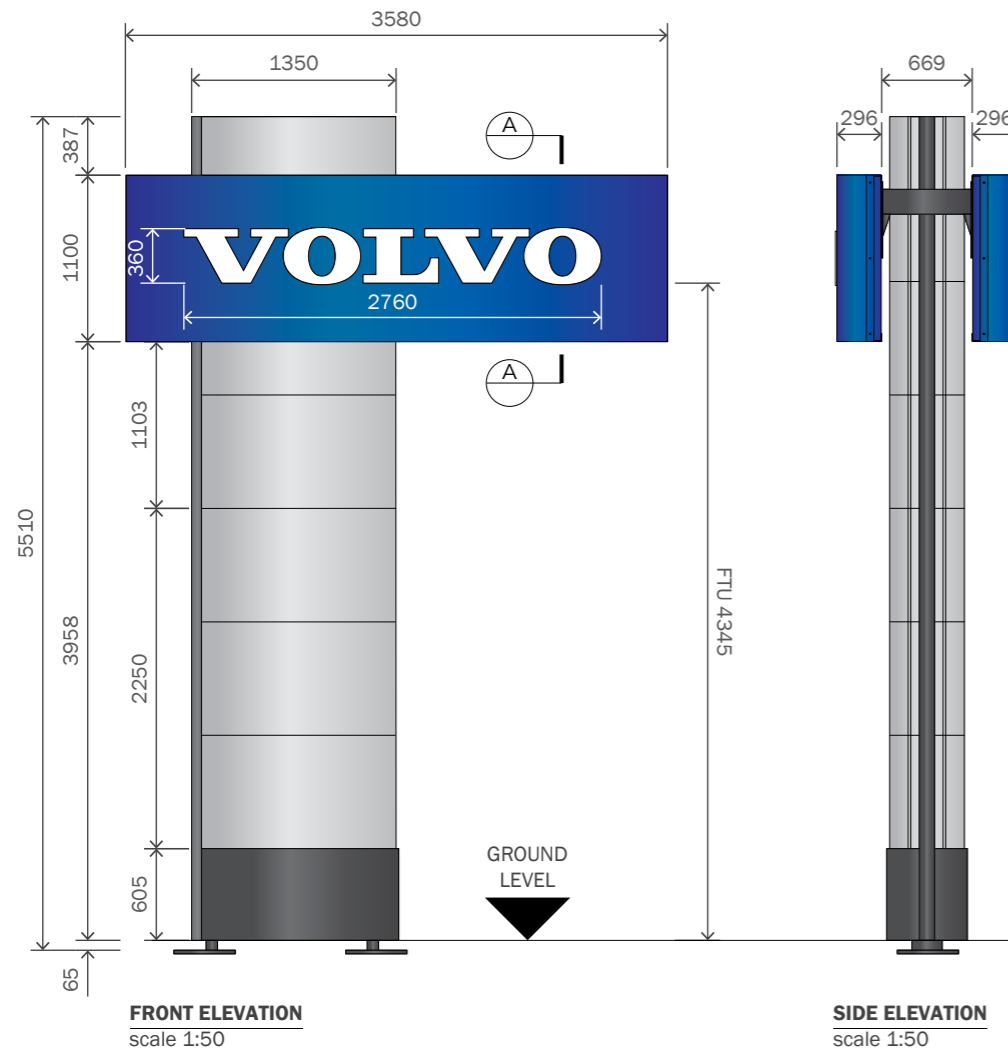
**EAST ELEVATION**  
scale 1:200



CLIENT :  
VOLVO  
PROJECT :  
EXTERNAL SIGNAGE  
SITE REFERENCE :  
LISTERS LEAMINGTON SPA

PRODUCT TYPE/DOCUMENT TITLE :  
SITE SCHEDULE  
PAGE TITLE :  
PROPOSED ELEVATIONS  
DRAWING NO :  
SS-VOL-V24669-1.2

DESIGN STATUS :  
**NOT FOR CONSTRUCTION**  
PAGE : 2/17  
REV : B  
BY : KG  
SCALE @ A3 : AS SHOWN  
ISSUE : 2  
DATE : 20.04.22



**GENERAL SPECIFICATION**  
1 off part illuminated Pylon sign.

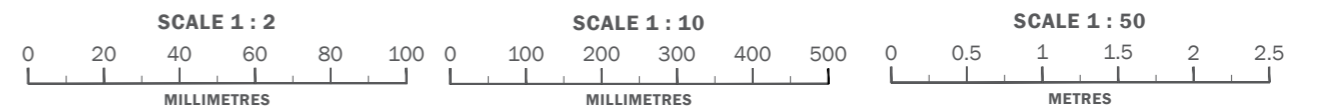
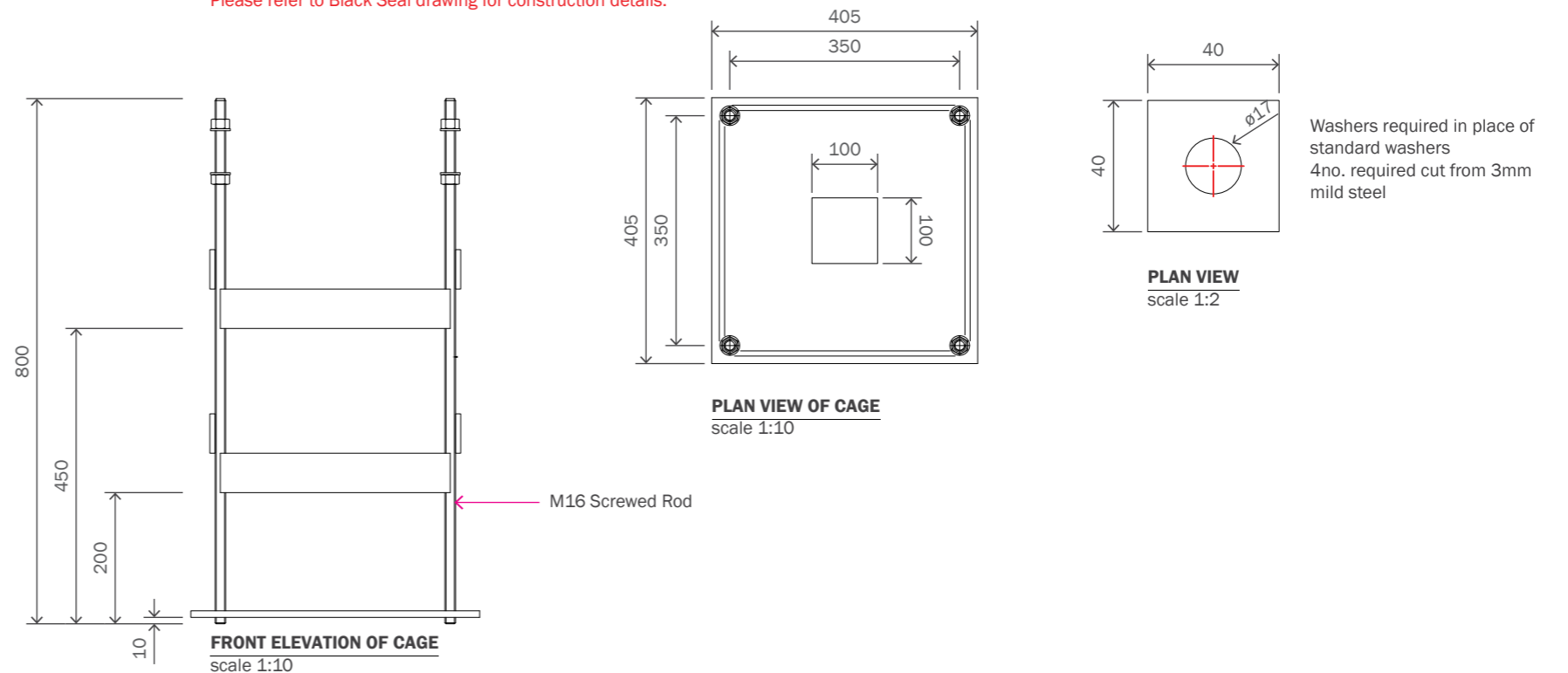
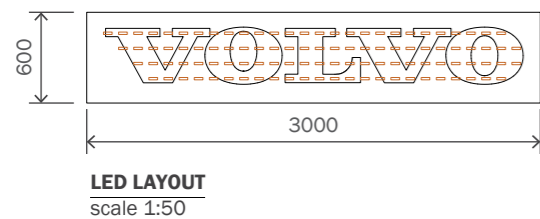
**CONSTRUCTION**  
Frame work constructed from mild steel vertical and horizontal sections to be fully welded and red oxide coated. Cladding Panels constructed from 2mm rolled and folded aluminium, to be powdercoated SILVER, RAL 9006 30% GLOSS fixed to frame work via D-Section Cladding Piece powdercoated DARK GREY RAL 7024, 30% GLOSS, No.6 x 19mm Countersunk Self Tappers, Metal fast fix for 25mm x 25mm x 3mm Cladding fixing angle to D-Section and No.6 x 19mm Flange Head Self Tappers for fixing cladding panels. Bottom Cladding Panels constructed from 2mm rolled and folded aluminium, to be powdercoated DARK GREY RAL 7024, 30% GLOSS. Front and Rear Header Box constructed from 2mm folded aluminium panel powdercoated BLUE RAL 5013, 30% GLOSS to be fixed to frame work via Joining Bracket constructed from ø165mm x 6mm aluminium tube, 10mm aluminium landing plate welded to aluminium tube and 10mm aluminium landing gusset plates fully welded to tube and landing plate - all to be powdercoated DARK GREY RAL 7024, 30% GLOSS.

**ILLUMINATION**  
'VOLVO' text is internally illuminated by 4no. lines 152no. CHIPLITE CL-XOL 7500K LEDs mounted on lightbox from folded 0.9mm pre-couted matt WHITE aluminium with 96 returns to all sides. Power supply 100W PSU.

**INSTALLATION**  
Pylon sign is to be fixed into ground via base plates and cage. C35 grade concrete base is to be cast into pre-excavated and shuttered hole. Concrete allowed to cure for 7 days prior to installation of pylon. Power cable to be concealed within an armoured sheath cast into the concrete base. 5 amp power supply required.

**SIZE**  
O/A size: 3580mm x 5510mm x 1261mm.

**NOTES**  
Please refer to Black Seal drawing for construction details.



**CLIENT :**  
VOLVO

**PROJECT :**  
EXTERNAL SIGNAGE

**SITE REFERENCE :**  
LISTERS LEAMINGTON SPA

**PRODUCT TYPE/DOCUMENT TITLE :**  
SITE SCHEDULE

**PAGE TITLE :**  
SIGN A - 5.5M PYLON SIGN

**DRAWING NO.:**  
SS-VOL-V24669-1.3

**DESIGN STATUS :**  
**NOT FOR CONSTRUCTION**

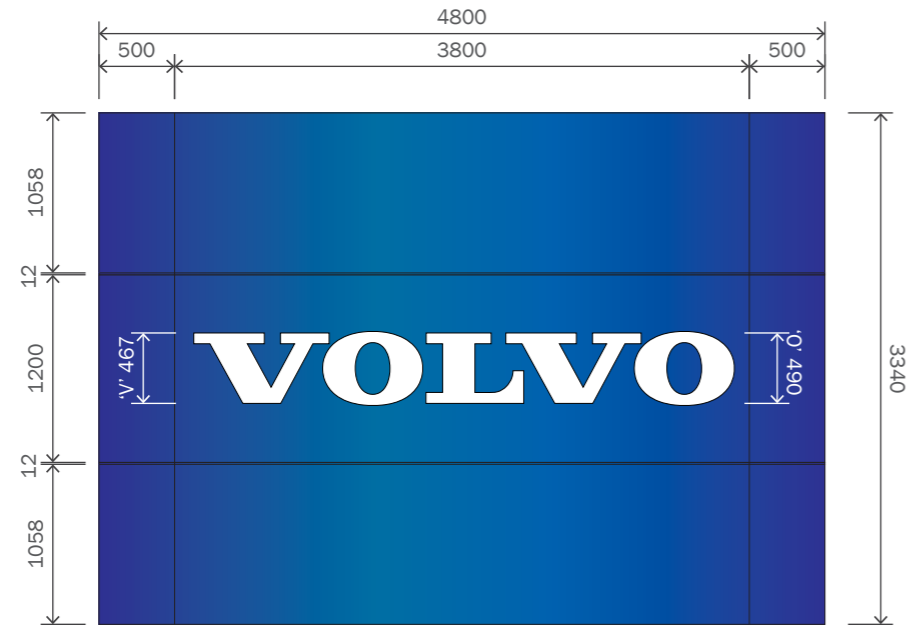
**PAGE :** 3/17

**REV. BY:** A

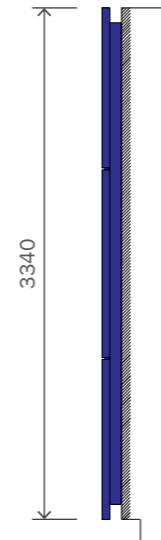
**SCALE @ A3:** KG AS SHOWN

**ISSUE :** 2

**DATE :** 20.04.22



**FRONT ELEVATION**  
scale 1:50



**SIDE ELEVATION**  
scale 1:50

**GENERAL SPECIFICATION**

2 off part illuminated wall mounted Monolith signs.

**CONSTRUCTION**

Face panels constructed from 3mm aluminium powdercoated BLUE RAL 5013, 30% GLOSS. Central panel to have fret cut 8mm shoulder cut, pushed through OPAL 050 acrylic letters. Full backtray constructed from support frame sections from 3mm folded aluminium with mitred corners. Outside faces to be powdercoated GREY RAL 7024, 30% GLOSS. Horizontal brackets from 3mm folded aluminium to be mill finish. Face panels to be fixed to horizontal brackets via 50mm metal fastfix and No. 8 x 13mm flange head self-tapping screws touched up BLUE RAL 5013, 30% GLOSS. Tie-backs from 3mm aluminium to be mill finish. 3mm aluminium full backtray with folded returns powdercoated BLUE RAL 5013, 30% GLOSS. Lengths of Merson interlock extrusion for joining panel splits.

\*Please see construction drawing for details.

**ILLUMINATION**

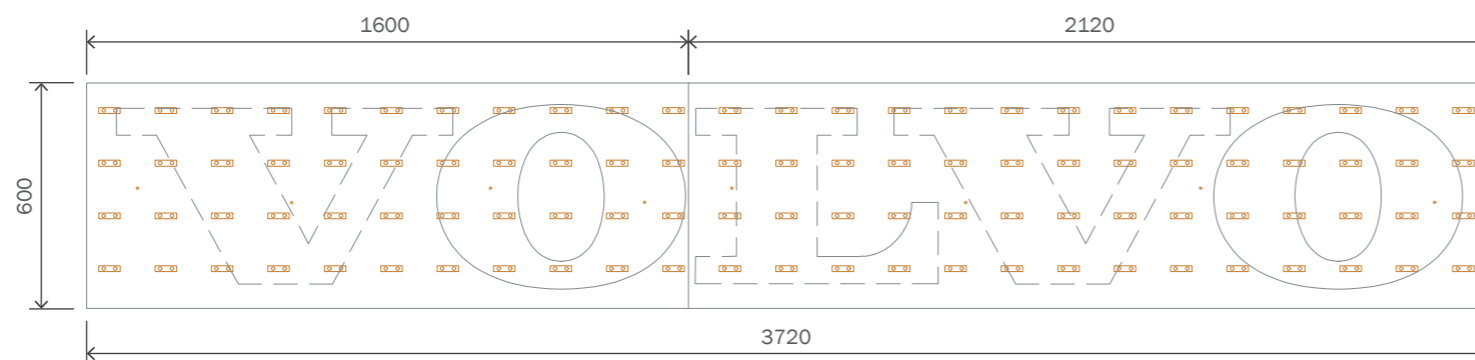
'VOLVO' text is internally illuminated by white CHIPLITE CL-XOL LEDs modules mounted on two parts lightbox from folded 0.9mm pre-coated WHITE aluminium with 102mm returns to all sides. 1 No. module Mean Well 12V 60W transformer.

**INSTALLATION**

Sign to be fixed to existing background via site specify fixings.

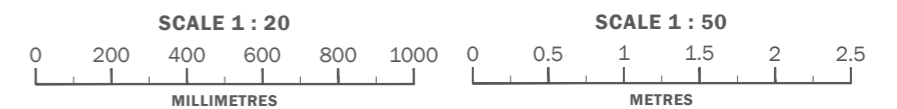
**SIZE**

O/A size: 4800mm x 3340mm x 125mm.  
HTUS: approx. 3665mm  
FTU: approx. 5126mm



**LED LAYOUT**  
scale 1:20

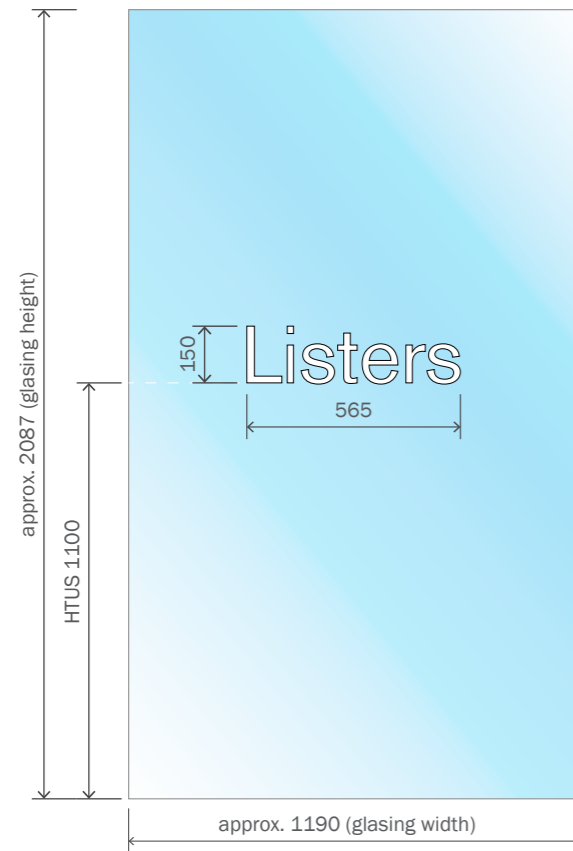
**NOTES**  
Lighting Layout & Quantities TBC



**CLIENT :**  
VOLVO  
**PROJECT :**  
EXTERNAL SIGNAGE  
**SITE REFERENCE :**  
LISTERS LEAMINGTON SPA

**PRODUCT TYPE/DOCUMENT TITLE :**  
SITE SCHEDULE  
**PAGE TITLE :**  
SIGN B1 & B2 - WALL MOUNTED MONOLITHS  
**DRAWING NO. :**  
SS-VOL-V24669-1.4

**DESIGN STATUS :**  
**NOT FOR CONSTRUCTION**  
**REV: BY: SCALE @ A3:**  
A KG AS SHOWN  
**ISSUE: DATE:**  
2 20.04.22



2no. sets required

**FRONT ELEVATION**  
scale 1:20

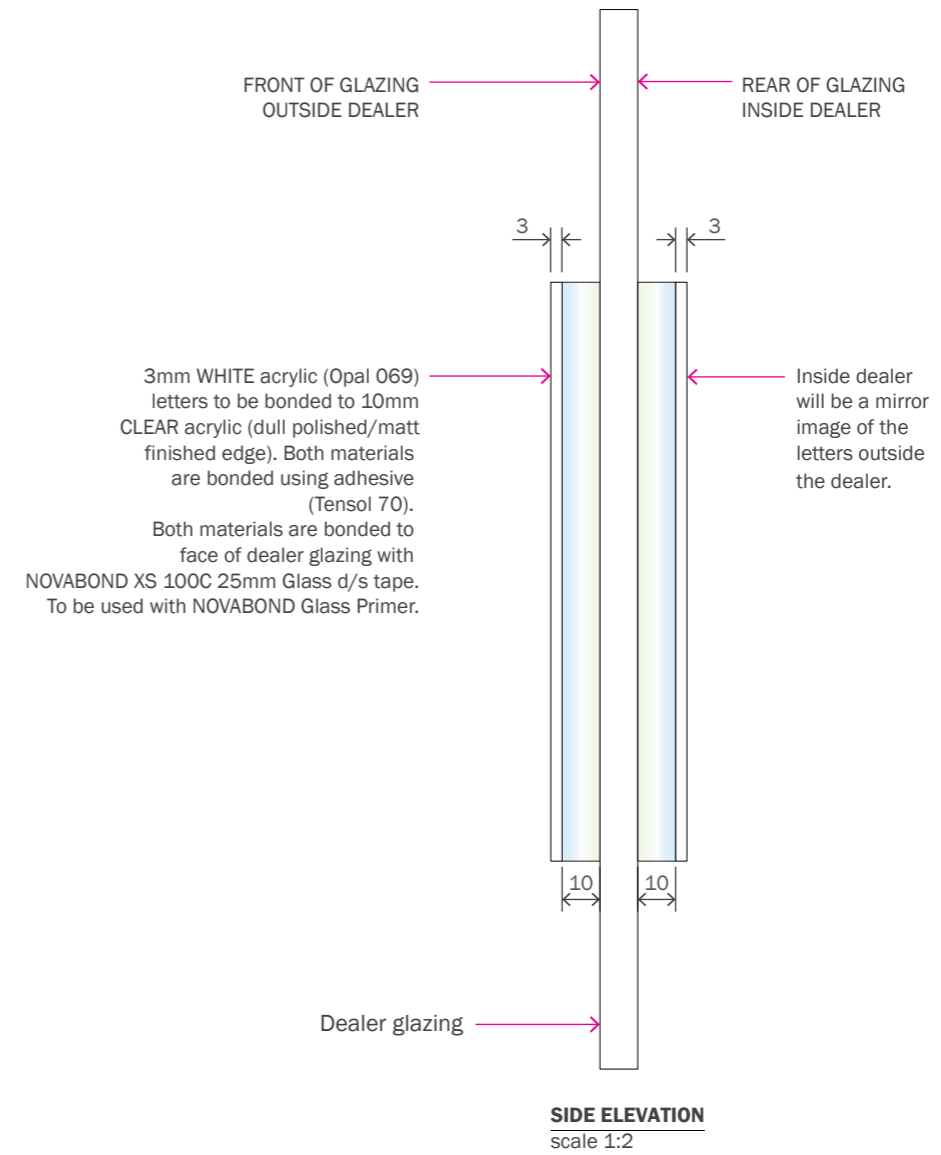
**GENERAL SPECIFICATION**  
1 off Dealer Name Sign.

**CONSTRUCTION**  
3mm WHITE acrylic (Opal 069) letters to be bonded to 10mm CLEAR acrylic (dull polished/matt finished edge). Both materials are bonded using adhesive (Tensol 70). Both materials are bonded to face of dealer glazing with NOVABOND XS 100C 25mm Glass d/s tape. To be used with NOVABOND Glass Primer.

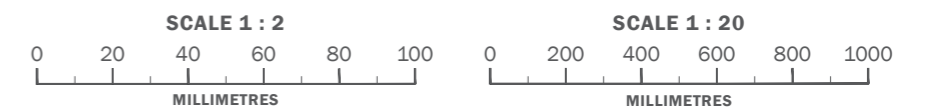
**ILLUMINATION**  
Non illuminated.

**INSTALLATION**  
Both materials are bonded to face of dealer glazing with NOVABOND XS 100C 25mm Glass d/s tape. To be used with NOVABOND Glass Primer.

**SIZE**  
O/A size: 565mm x 150mm x 13mm.  
HTUS - approx. 1100mm (TBC).



**SIDE ELEVATION**  
scale 1:2



**CLIENT :**  
VOLVO  
**PROJECT :**  
EXTERNAL SIGNAGE  
**SITE REFERENCE :**  
LISTERS LEAMINGTON SPA

**PRODUCT TYPE/DOCUMENT TITLE :**  
SITE SCHEDULE  
**PAGE TITLE :**  
SIGN C - BUILT UP LETTERS  
**DRAWING NO.:**  
SS-VOL-V24669-1.5

**DESIGN STATUS :**  
**NOT FOR CONSTRUCTION**  
**PAGE :** 5/17  
**REV. BY:** A KG  
**SCALE @ A3:** AS SHOWN  
**ISSUE :** 2  
**DATE :** 20.04.22



**FRONT ELEVATION**  
scale 1:5

**GENERAL SPECIFICATION**

1 off Acrylic Opening Hours Sign.

**CONSTRUCTION**

5mm router cut clear silk Perspex panel with 4 off  $\varnothing$  12mm holes at indicated centres. Digital print decoration clear face adhesive vinyl applied to rear and backed up with 3mm Perspex. panel to have 3mm radiu corners.

**ILLUMINATION**

Non illuminated.

**INSTALLATION**

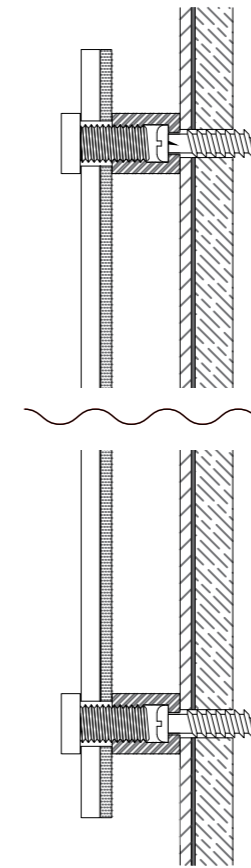
Panels held together and fitted by way of standoff fixings.  
Please refer to construction drawing for full details.

**SIZE**

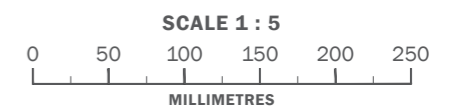
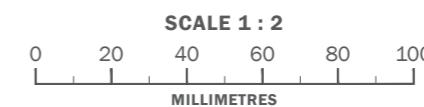
O/A size: 600mm x 400mm x 10mm.  
O/A weight of sign approx. 3kg.  
HTUS - 1100mm.

**NOTES**

Please note opening hours to be confirmed before manufacture.



**SECTION THROUGH**  
scale 1:2



CLIENT :  
VOLVO  
PROJECT :  
EXTERNAL SIGNAGE

SITE REFERENCE :  
LISTERS LEAMINGTON SPA

PRODUCT TYPE/DOCUMENT TITLE :  
SITE SCHEDULE  
PAGE TITLE :  
SIGN D - OPENING HOURS SIGN

DRAWING NO :  
SS-VOL-V24669-1.6

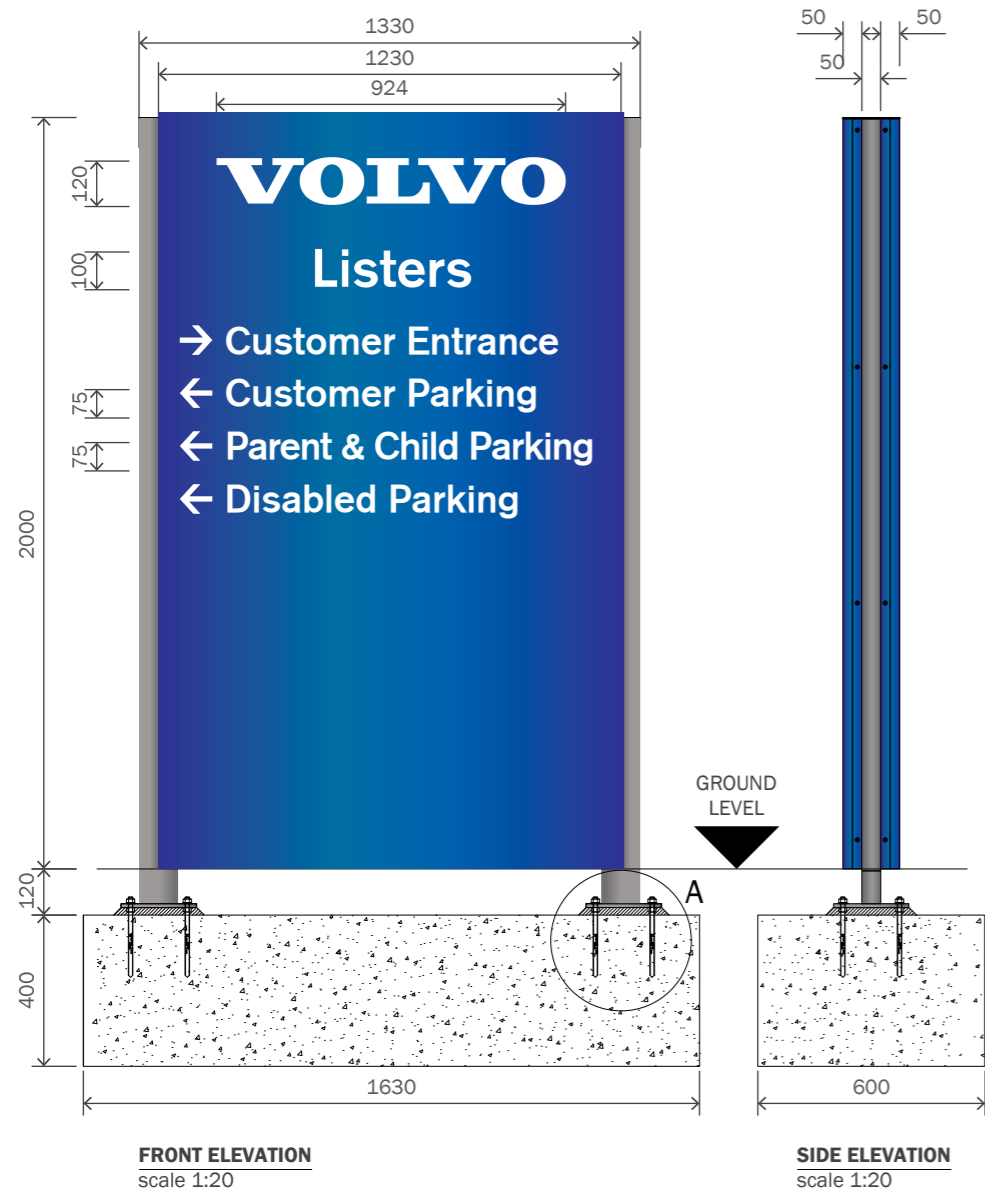
PAGE :  
6/17

DESIGN STATUS :  
**NOT FOR CONSTRUCTION**

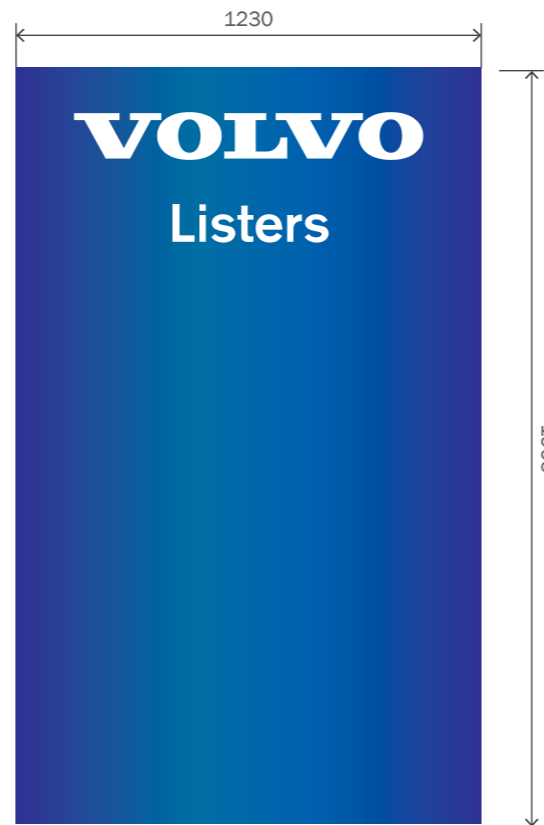
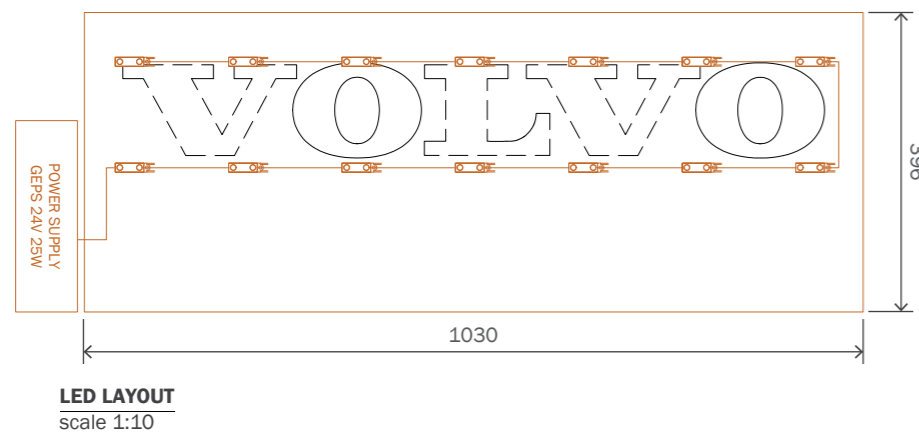
REV: BY: SCALE @ A3 :  
A KG AS SHOWN

ISSUE: DATE :  
2 20.04.22





**MAIN CONTRACTOR TO ENSURE CONCRETE BASE IS INSTALLED 120mm FROM FGL TO TOP OF BASE**



**GENERAL SPECIFICATION**

1 off Free Standing part illuminated Directional Totem Sign.

**CONSTRUCTION**

2mm folded aluminium panels with 50mm returns to be powdercoated BLUE RAL 5013, 30% GLOSS fixed to aluminium frame work from 100mm x 50 mm x 3mm verticals posts with 3no. 50mm x 50mm x 3mm horizontal posts and 10mm base plate powdercoated SILVER RAL 9006, 30% GLOSS. 25mm x 25mm x 3mm aluminium angle to run full height of sign and along top for fixing panel. Cut to suit and welded to aluminium frame. 3mm profile cut aluminium top cap, to be powdercoated BLUE RAL 5013, 30% GLOSS. Flush in-laid acrylic 'Volvo' logo from 8mm OPAL 050 through fret cut panel. Fixed in place with Simson ISR 70-03. WHITE Avery 800 vinyl graphics and arrows to be applied to face panels. 3mm WHITE ACM light tray to be fixed to frame via 25mm x 25mm x 3mm aluminium angle 930mm long.

**ILLUMINATION**

'VOLVO' text is internally illuminated by White LEDs Tetra Mini Max 7100K.

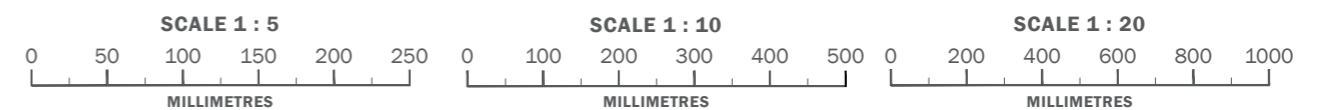
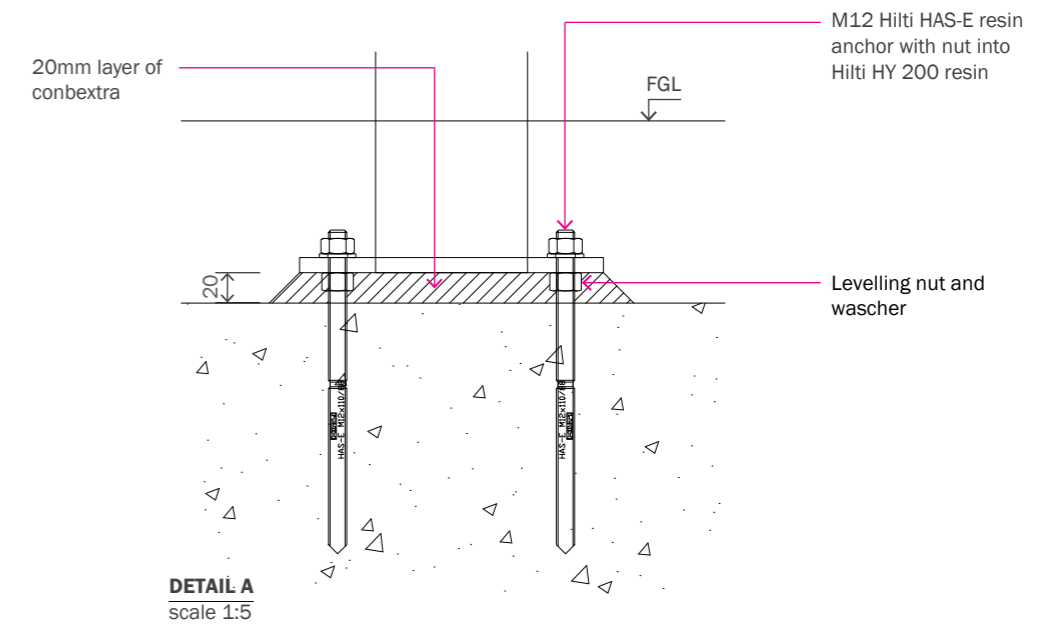
**INSTALLATION**

Pylon sign is to be fixed into ground via M12 Hilti HAS-E resin anchor with nut into Hilti HY 200 resin, levelling nut and washer through 20mm layer of conbextra. Grade C28/35a 1630mm x 400mm x 900mm concrete base. Concrete allowed to cure for 7 days prior to installation of totem.

Power cable to be concealed within an armoured sheath cast into the concrete base. 5 amp power supply required.

**SIZE**

O/A size: 1330mm x 2000mm x 150mm.  
O/A weight of sign approx. 68kg.



**CLIENT :**  
VOLVO

**PROJECT :**  
EXTERNAL SIGNAGE

**SITE REFERENCE :**  
LISTERS LEAMINGTON SPA

**PRODUCT TYPE/DOCUMENT TITLE :**  
SITE SCHEDULE

**PAGE TITLE :**  
SIGN E - DIRECTIONAL TOTEM

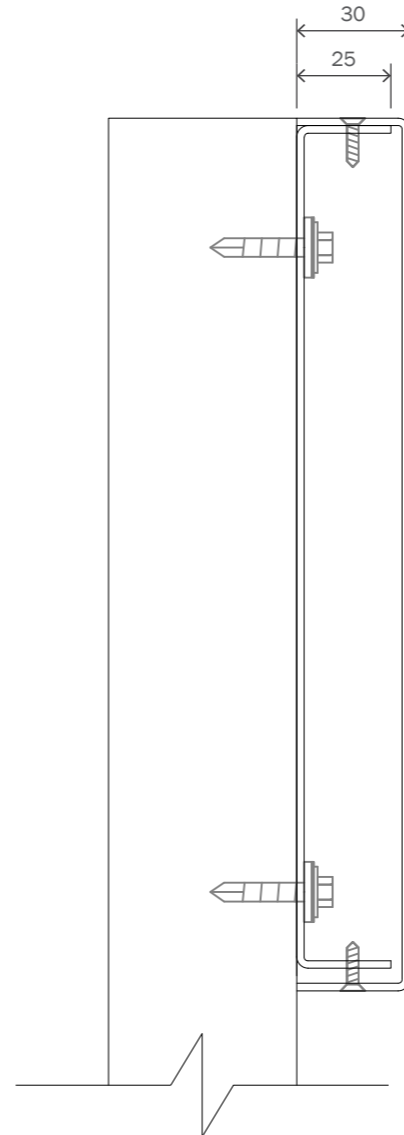
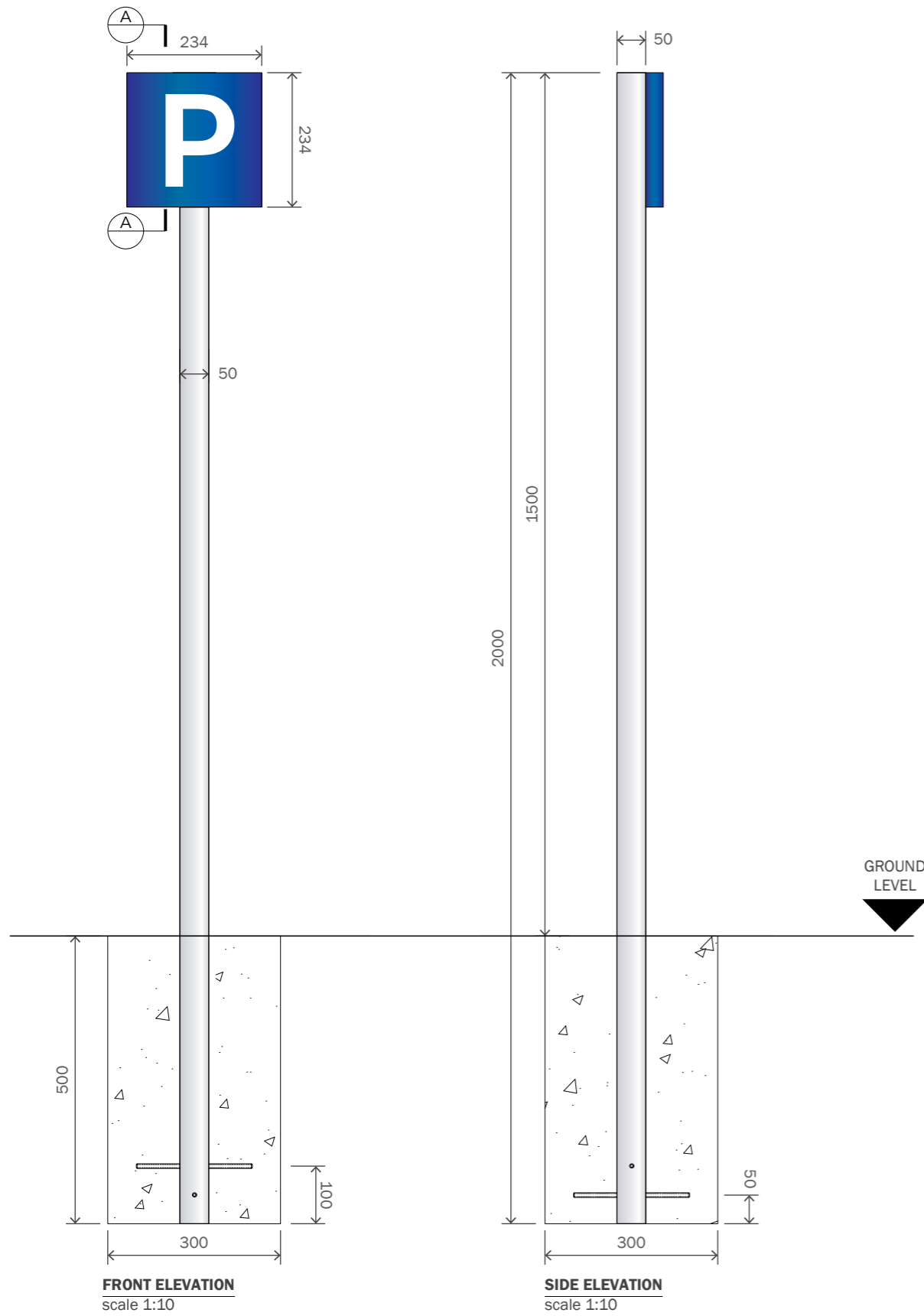
**DRAWING NO. :**  
SS-VOL-V24669-1.7

**DESIGN STATUS :**  
**NOT FOR CONSTRUCTION**

**PAGE :** 7/17

**REV. BY: SCALE @ A3:**  
A KG AS SHOWN

**ISSUE: DATE:**  
2 20.04.22



**GENERAL SPECIFICATION**

4 off new Single Leg Post Parking Signs 'P' Logo.  
 O/A size of sign 234mm x 1500mm.  
 O/A weight of sign 22kg.  
 O/A size of face panel 234mm x 234mm.  
 HTUS: 1266mm.

**CONSTRUCTION**

Face panel is constructed from 2mm aluminium with folded 30mm returns to all sides to be powdercoated BLUE RAL 5013, 30% GLOSS with WHITE Avery 700 gloss vinyl applied to face. Back tray is constructed from 2mm folded aluminium with 25mm returns to top and bottom, to be powdercoated BLUE RAL 5013, 30% GLOSS. Back tray to be fixed via metal fast fix for fixing back tray to post to 50mm x 50mm x 3mm aluminium post with welded end cap, to be powdercoated SILVER RAL 9006, 30% GLOSS. Face panel fixed to back tray via No6 x 13mm countersunk self tapper. M8 (or larger) screwed rod to be welded through post. Sign mounted to postcrete base.

**ILLUMINATION**

Non illuminated.

**INSTALLATION**

The sign is installed to the required area and fixed in position using 200mm lengths of M8 screwed rods.



CLIENT :  
VOLVO

PROJECT :  
EXTERNAL SIGNAGE

SITE REFERENCE :  
LISTERS LEAMINGTON SPA

PRODUCT TYPE/DOCUMENT TITLE :  
SITE SCHEDULE

PAGE TITLE :  
SIGN F - PARKING SIGN - 'P' LOGO

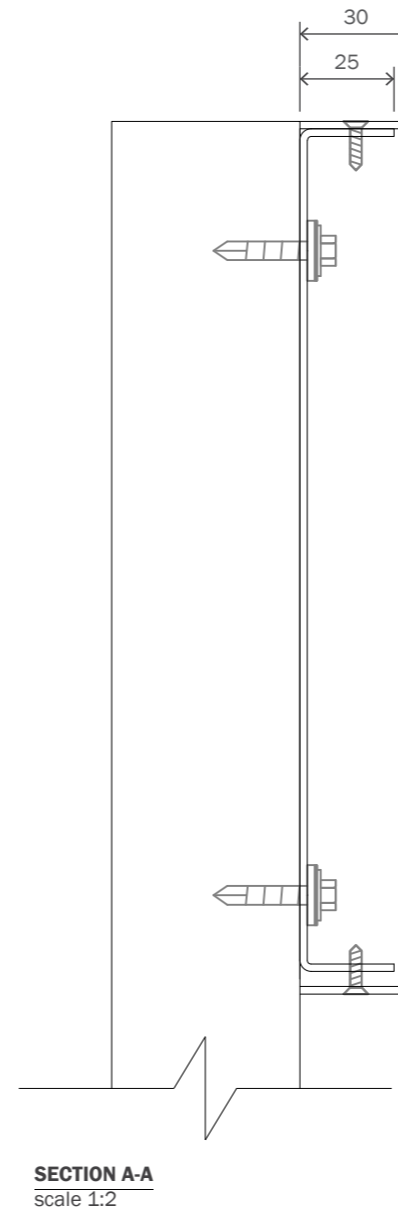
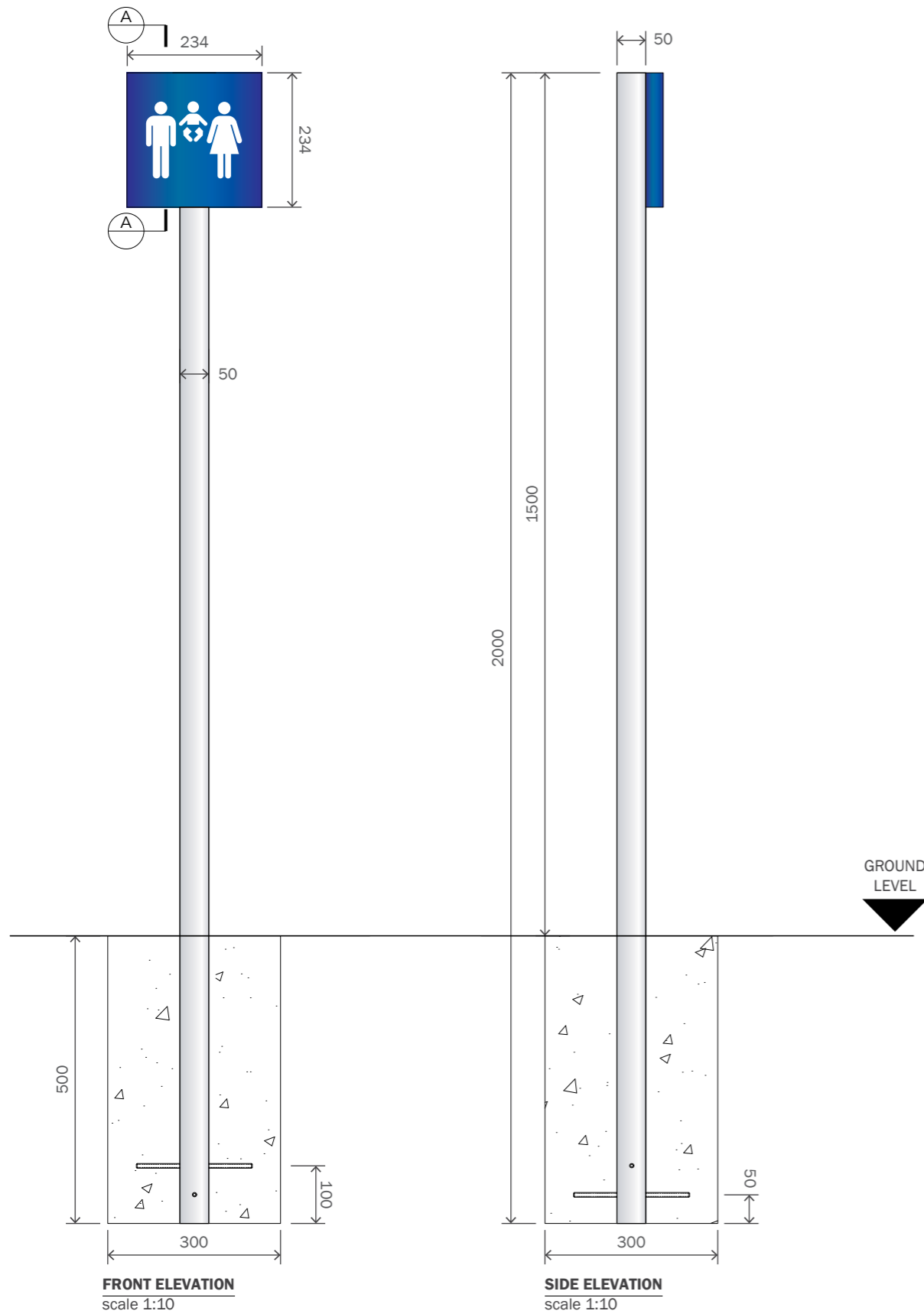
DRAWING NO :  
SS-VOL-V24669-1.8

DESIGN STATUS :  
**NOT FOR CONSTRUCTION**

PAGE :  
8/17

REV : BY: SCALE @ A3 :  
B KG AS SHOWN

ISSUE : DATE :  
2 20.04.22



**GENERAL SPECIFICATION**

1 off new Signle Leg Post Parking Sign Parent and Child Logo.  
 O/A size of sign 234mm x 1500mm.  
 O/A weight of sign 22kg.  
 O/A size of face panel 234mm x 234mm.  
 HTUS: 1266mm.

**CONSTRUCTION**

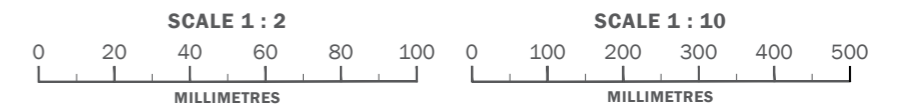
Face panel is constructed from 2mm aluminium with folded 30mm returns to all sides to be powdercoated BLUE RAL 5013, 30% GLOSS with WHITE Avery 700 gloss vinyl applied to face. Back tray is constructed from 2mm folded aluminium with 25mm returns to top and bottom, to be powdercoated BLUE RAL 5013, 30% GLOSS. Back tray to be fixed via metal fast fix for fixing back tray to post to 50mm x 50mm x 3mm aluminium post with welded end cap, to be powdercoated SILVER RAL 9006, 30% GLOSS. Fasce panel fixed to back tray via No6 x 13mm countersunk self tapper. M8 (or larger) screwed rod to be welded through post. Sign mounted to postcrete base.

**ILLUMINATION**

Non illuminated.

**INSTALLATION**

The sign is installed to the required area and fixed in position using 200mm lengths of M8 screwed rods.



CLIENT :  
VOLVO

PROJECT :  
EXTERNAL SIGNAGE

SITE REFERENCE :  
LISTERS LEAMINGTON SPA

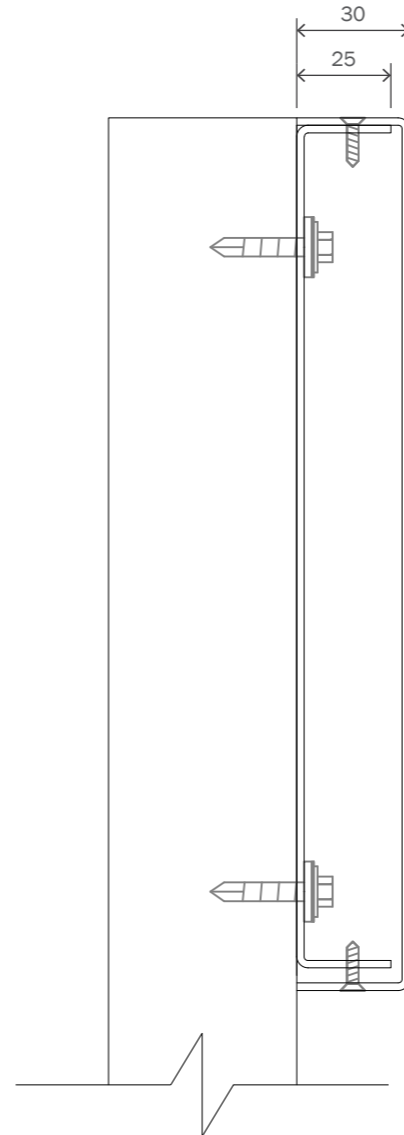
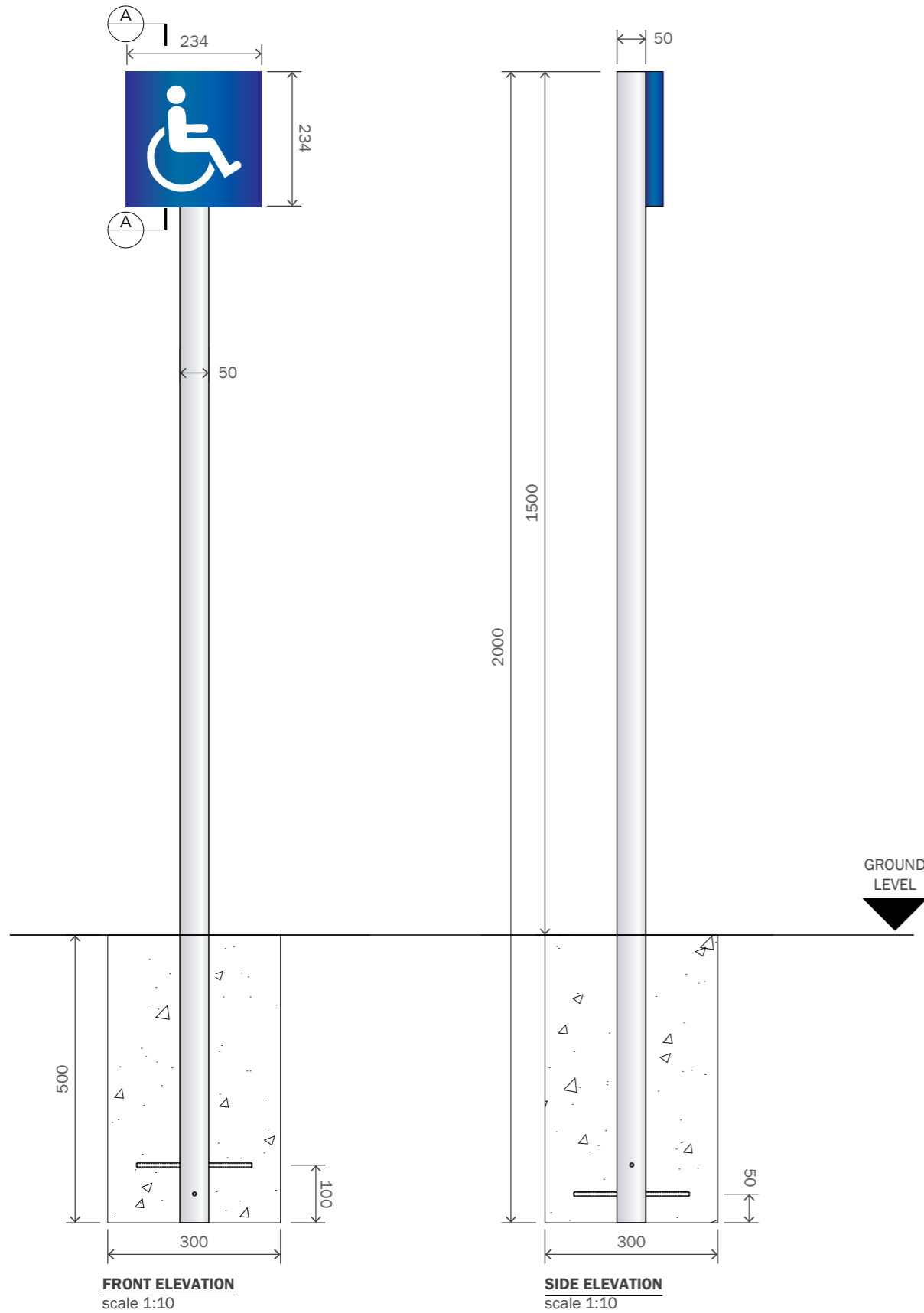
PRODUCT TYPE/DOCUMENT TITLE :  
SITE SCHEDULE

PAGE TITLE :  
SIGN G - PARKING SIGN - 'PARENT & CHILD' LOGO

DRAWING NO :  
SS-VOL-V24669-1.9

DESIGN STATUS :  
**NOT FOR CONSTRUCTION**

REV: BY: SCALE @ A3: ISSUE: DATE:  
A KG AS SHOWN 2 20.04.22



**GENERAL SPECIFICATION**

2 off new Single Leg Post Parking Sign 'Disabled' Logo.  
 O/A size of sign 234mm x 1500mm.  
 O/A weight of sign 22kg.  
 O/A size of face panel 234mm x 234mm.  
 HTUS: 1266mm.

**CONSTRUCTION**

Face panel is constructed from 2mm aluminium with folded 30mm returns to all sides to be powdercoated BLUE RAL 5013, 30% GLOSS with WHITE Avery 700 gloss vinyl applied to face. Back tray is constructed from 2mm folded aluminium with 25mm returns to top and bottom, to be powdercoated BLUE RAL 5013, 30% GLOSS. Back tray to be fixed via metal fast fix for fixing back tray to post to 50mm x 50mm x 3mm aluminium post with welded end cap, to be powdercoated SILVER RAL 9006, 30% GLOSS. Face panel fixed to back tray via No6 x 13mm countersunk self tapper. M8 (or larger) screwed rod to be welded through post. Sign mounted to postcrete base.

**ILLUMINATION**

Non illuminated.

**INSTALLATION**

The sign is installed to the required area and fixed in position using 200mm lengths of M8 screwed rods.



CLIENT :  
VOLVO

PROJECT :  
EXTERNAL SIGNAGE

SITE REFERENCE :  
LISTERS LEAMINGTON SPA

PRODUCT TYPE/DOCUMENT TITLE :  
SITE SCHEDULE

PAGE TITLE :  
SIGN H - PARKING SIGN - 'DISABLED' LOGO

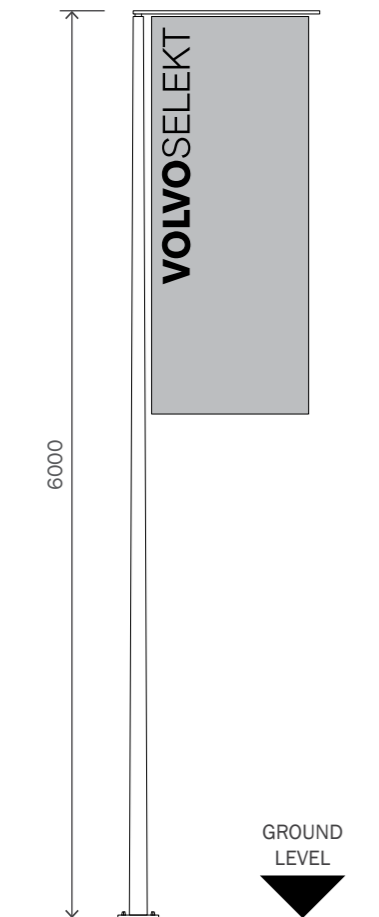
DRAWING NO :  
SS-VOL-V24669-1.10

DESIGN STATUS :  
**NOT FOR CONSTRUCTION**

PAGE :  
10/17

REV : BY: SCALE @ A3 :  
A KG AS SHOWN

ISSUE : DATE :  
2 20.04.22



**FRONT ELEVATION**  
scale 1:50



**PLAN VIEW**  
scale 1:50

**GENERAL SPECIFICATION**

3 off new Selekt Flag Poles.  
O/A size of sign 120mm x 6000mm.  
O/A weight of sign TBC.

**CONSTRUCTION**

6000mm GRP Pole with swivel arm. TBC

**ILLUMINATION**

Non illuminated.

**BASE AND INSTALLATION**

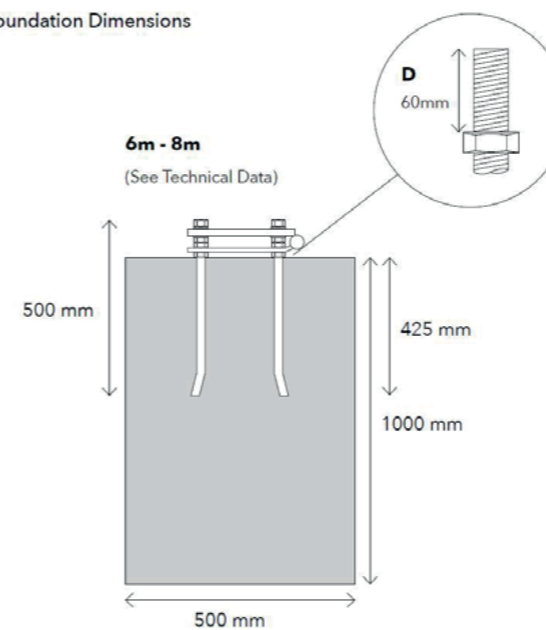
Bases and hinged base plates to be installed by main contractor, base requires 5-7 days curing time.

Merson Group will supply hinged base plates with an approximate 1 week lead time from receipt of order. Merson Group will connect to hinged base plate when on site for installation.

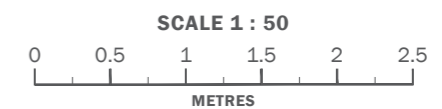
Flag pole spacing should be a minimum of 2000mm between pole centre's and no more than 2500mm apart, these are to be in clusters of three.

Merson Group are to install the first set of flags (only) and there after the dealership need to order through the Volvo Selekt network via David Chittenden (Bruce Greenwoods replacement).

**Foundation Dimensions**



Flagpole length	6m
Butt Diameter Ø (mm)	120
Top Diameter Ø (mm)	65
Banner Arm Length (mm)	1100
Banner Arm Ø (mm)	23
Base Fixing	Hinged
Base Plate Dimensions (mm)	180 x 180
Foundation Required (w2 xd) (mm)	500 x 1000
Recommended Portrait Flag size (mm)	1000 x 2000
Maximum Wind Speed (mph Flagged)	50



**CLIENT :**  
VOLVO  
**PROJECT :**  
EXTERNAL SIGNAGE  
**SITE REFERENCE :**  
LISTERS LEAMINGTON SPA

**PRODUCT TYPE/DOCUMENT TITLE :**  
SITE SCHEDULE  
**PAGE TITLE :**  
SIGN J - 6M SELEKT FLAG POLE SIGN  
**DRAWING NO. :**  
SS-VOL-V24669-1.11

**DESIGN STATUS :**  
**NOT FOR CONSTRUCTION**  
**REVISIONS:**  
REV: BY: SCALE @ A3: ISSUE: DATE:  
A KG AS SHOWN 2 20.04.22



**FRONT ELEVATION**  
scale 1:20

**GENERAL SPECIFICATION**

1 off new Free standing Selekt Totem.  
O/A size of sign 1038mm x 2120mm.  
O/A weight of sign - 113kg.

**CONSTRUCTION**

Frame manufactured from extrusion profiles, powdercoated SILVER RAL 9006. Face panel cut from opal acrylic. Graphic to be applied direct to substrate, cut from BLACK rear adhesive vinyl.

Base plated constructed from 10mm laser cut mild steel with 40x40mm SHS mild steel welded posts. All to be red oxide coated and powdercoated SILVER RAL 9006.

Kick plate cut from 2mm aluminium, powdercoated SILVER RAL 9006.

**ILLUMINATION**

Sign to be illuminated using double sided LED light sheet supplied by Arlux.

**FOUNDATION**

Bases to be installed by main contractor and require 5-7 days curing time  
See details drawings for base requirements

No cage is required. Merson Group will resin anchor when on site for installation

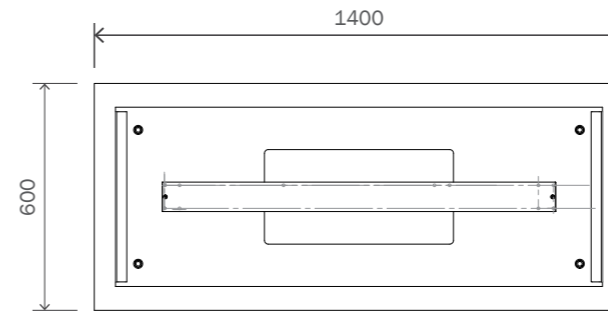
Include a power supply for Merson Group to connect to at installation. Power supply to have waterproof casing.  
Concrete mix design C35.  
Concrete density 24 kN/m3.

Power consumption: 36W, 24V.

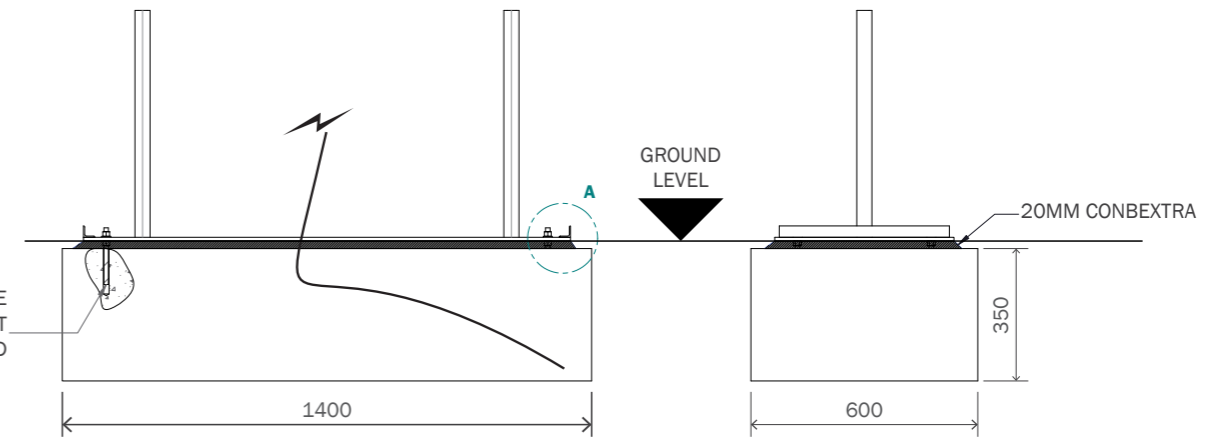
**NOTES**

Indicative artwork only - to be confirmed before manufacture.  
Please refer to Black Seal drawing for construction details.

Lorem ipsum

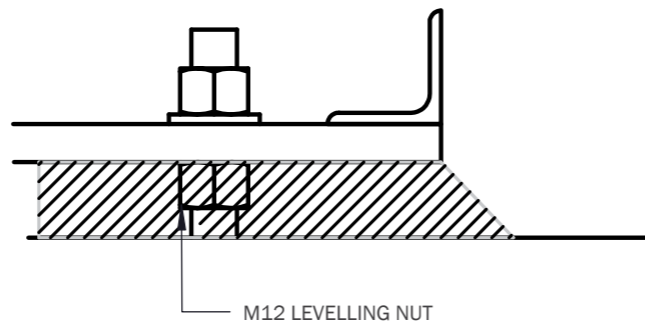


**BASE DETAILS - PLAN VIEW**  
scale 1:20

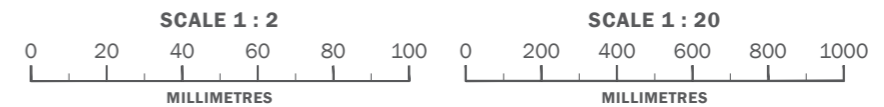


**BASE DETAILS - FRONT ELEVATION**  
scale 1:20

**BASE DETAILS - SIDE ELEVATION**  
scale 1:20



**DETAIL A**  
scale 1:2



CLIENT :  
VOLVO  
PROJECT :  
EXTERNAL SIGNAGE

SITE REFERENCE :  
LISTERS LEAMINGTON SPA

PRODUCT TYPE/DOCUMENT TITLE :  
SITE SCHEDULE  
PAGE TITLE :  
SIGN K - SELEKT COMMS PANEL

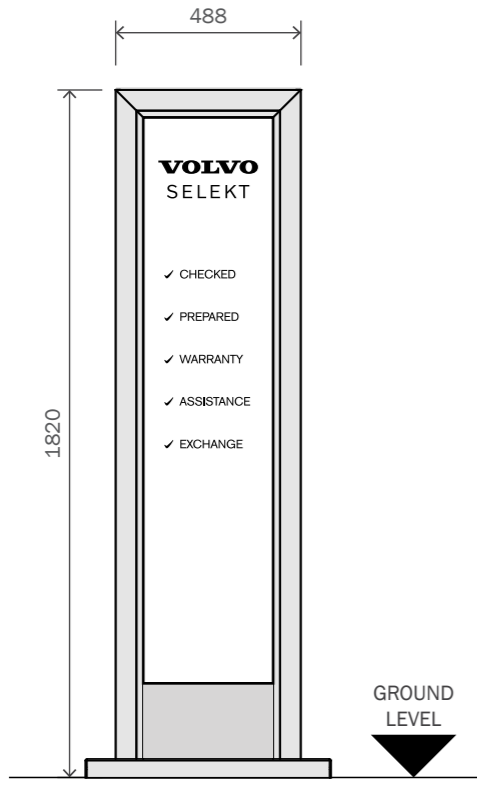
DRAWING NO :  
SS-VOL-V24669-1.12

PAGE :  
12/17

DESIGN STATUS :  
**NOT FOR CONSTRUCTION**

REV : BY: SCALE @ A3 :  
A KG AS SHOWN

ISSUE : DATE :  
2 20.04.22



**FRONT ELEVATION**  
scale 1:20

**GENERAL SPECIFICATION**

2 off new Free standing Selekt Totems.  
O/A size of sign 488mm x 1820mm.  
O/A weight of sign - 57kg.

**CONSTRUCTION**

Frame manufactured from extrusion profiles, powdercoated SILVER RAL 9006.  
Face panel cut from opal acrylic. Graphic to be applied direct to substrate, cut from BLACK rear adhesive vinyl.

Base plated constructed from 10mm laser cut mild steel with 40x40mm SHS mild steel welded posts. All to be red oxide coated and powdercoated SILVER RAL 9006.

Kick plate cut from 2mm aluminium, powdercoated SILVER RAL 9006.

**ILLUMINATION**

Sign to be illuminted using double sided LED light sheet supplied by Arlux.

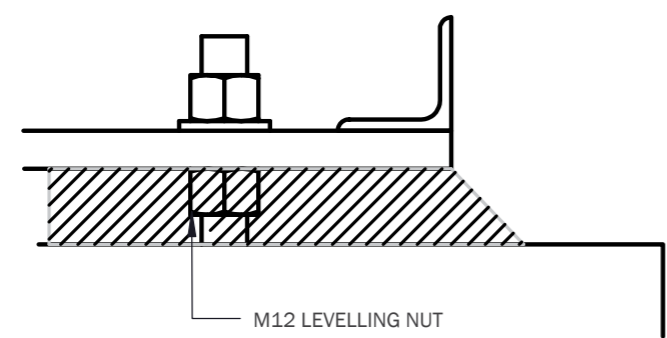
**FOUNDATION**

Bases to be installed by main contractor and require 5-7 days curing time  
See details drawings for base requirements  
No cage is required. Merson Group will resin anchor when on site for installation  
Include a power supply for Merson Group to connect to at installation. Power supply to have waterproof casing.  
Concrete mix design C35.  
Concrete density 24 kN/m3.

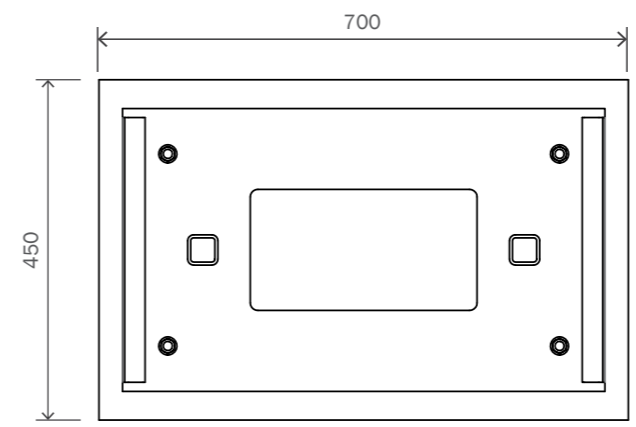
Power consumption: 36W, 24V.

**NOTES**

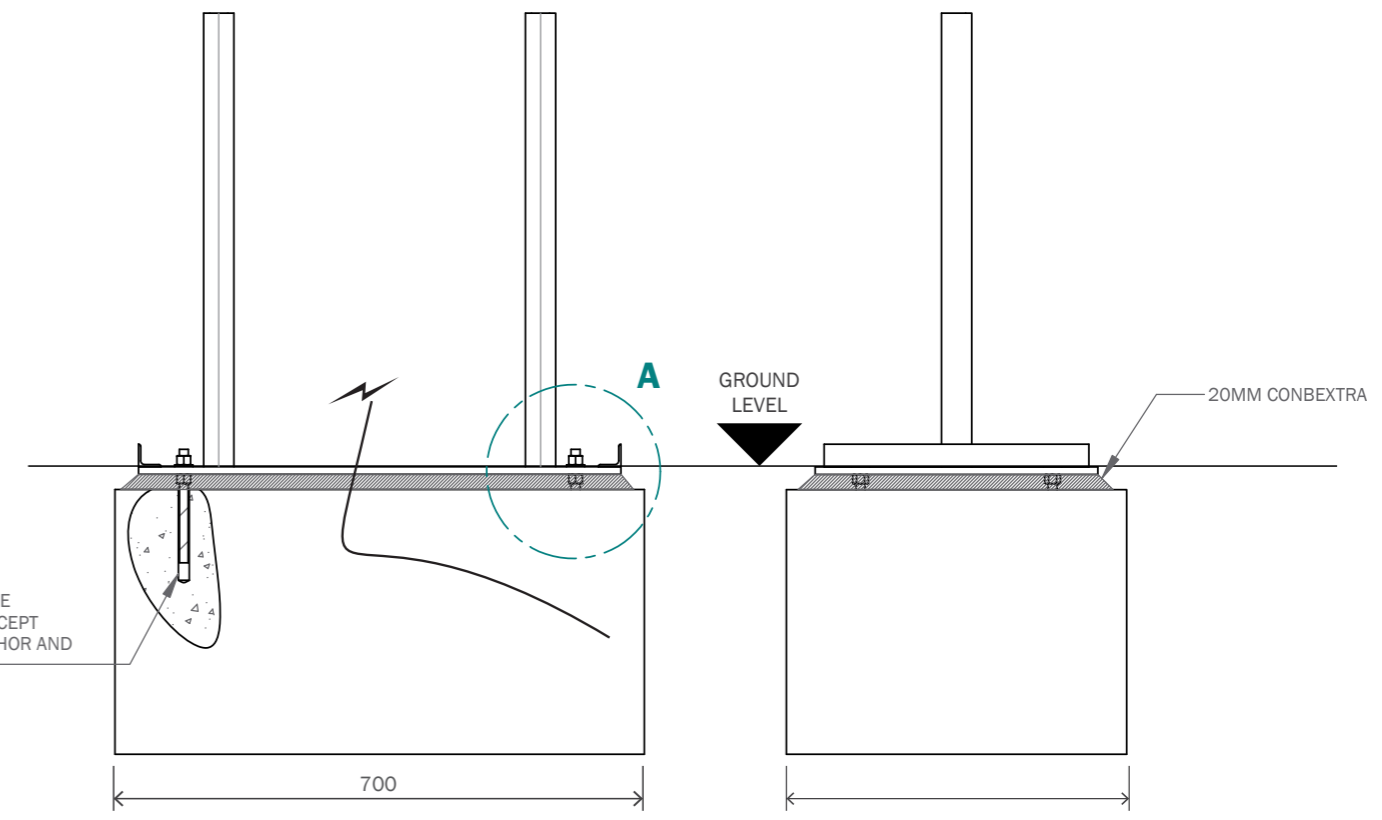
Please refer to Black Seal drawing for construction details.



**DETAIL A**  
scale 1:2

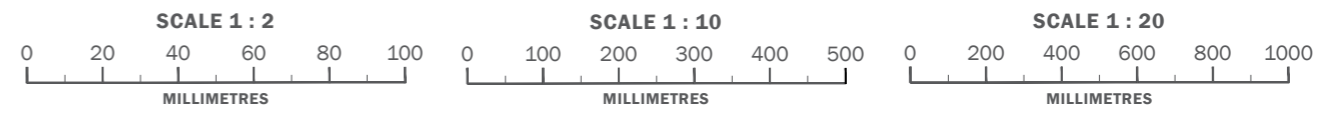


**BASE DETAILS - PLAN VIEW**  
scale 1:10



**BASE DETAILS - FRONT ELEVATION**  
scale 1:10

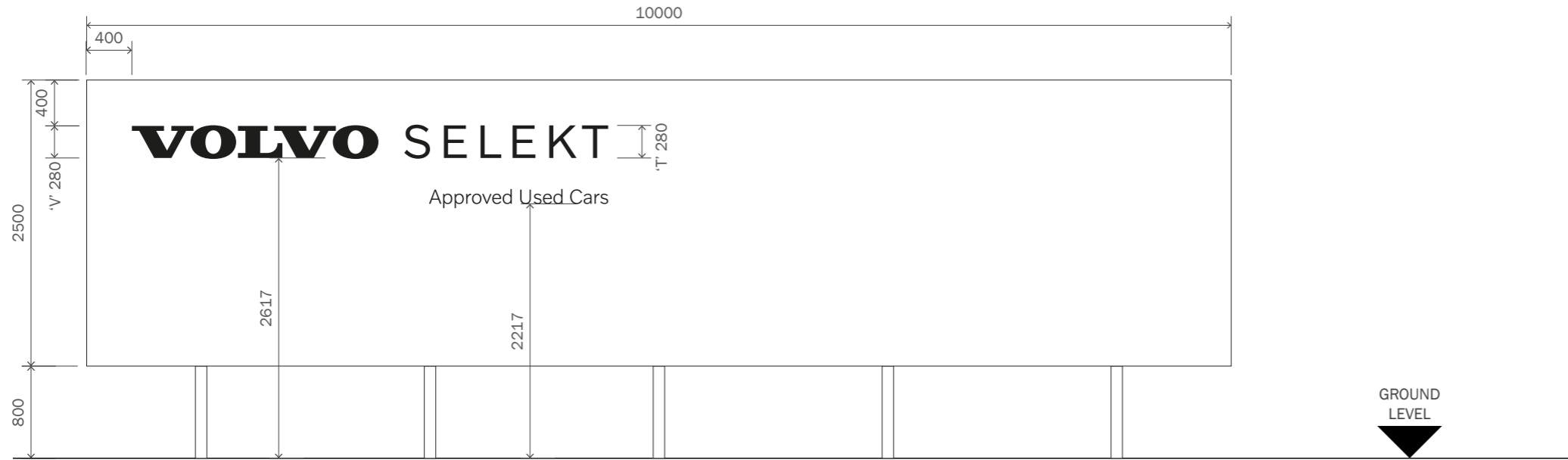
**BASE DETAILS - SIDE ELEVATION**  
scale 1:10



CLIENT :  
VOLVO  
PROJECT :  
EXTERNAL SIGNAGE  
SITE REFERENCE :  
LISTERS LEAMINGTON SPA

PRODUCT TYPE/DOCUMENT TITLE :  
SITE SCHEDULE  
PAGE TITLE :  
SIGN L - SELEKT TOTEM  
DRAWING NO :  
SS-VOL-V24669-1.13

DESIGN STATUS :  
**NOT FOR CONSTRUCTION**  
PAGE :  
13/17  
REV : BY: SCALE @ A3 :  
A KG AS SHOWN  
ISSUE : DATE :  
2 20.04.22



**FRONT ELEVATION**  
scale 1:50

**GENERAL SPECIFICATION**

1 off new Selekt Wall.  
O/A size of sign 10000x2500x245mm.  
O/A weight of sign - TBCkg.

**CONSTRUCTION**

Frame manufactured from 75mm x 50mm x 2mm steel sections, polyester powdercoated WHITE RAL TBC.  
Main body manufactured from aluminium extrusions, polyester powdercoated WHITE RAL TBC.  
Translucent PVC skin with digitally printed self adhesive vinyl applied with an overlamine applied to face, mounted to a frame with a tensioned printed face. LED illumination behind text only. Full bottom edge of sign to have uplighters LED modules to give a gentle wash of light up the face of the wall.

**ILLUMINATION**

Sign to be illuminated using LED modules.  
Illumination level - 200 cd/m2.

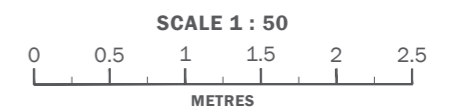
**FOUNDATION**

Bases to be installed by main contractor and require 7-10 days curing time  
See details drawings for base requirements  
Power supply to have waterproof casing.  
Concrete mix design C35.  
Concrete density 24 kN/m3.  
Te power supply is required at 5amp single phase.

**NOTES**

Indicative artwork only - to be confirmed before manufacture.

Sign to be supplied by Wellstock.

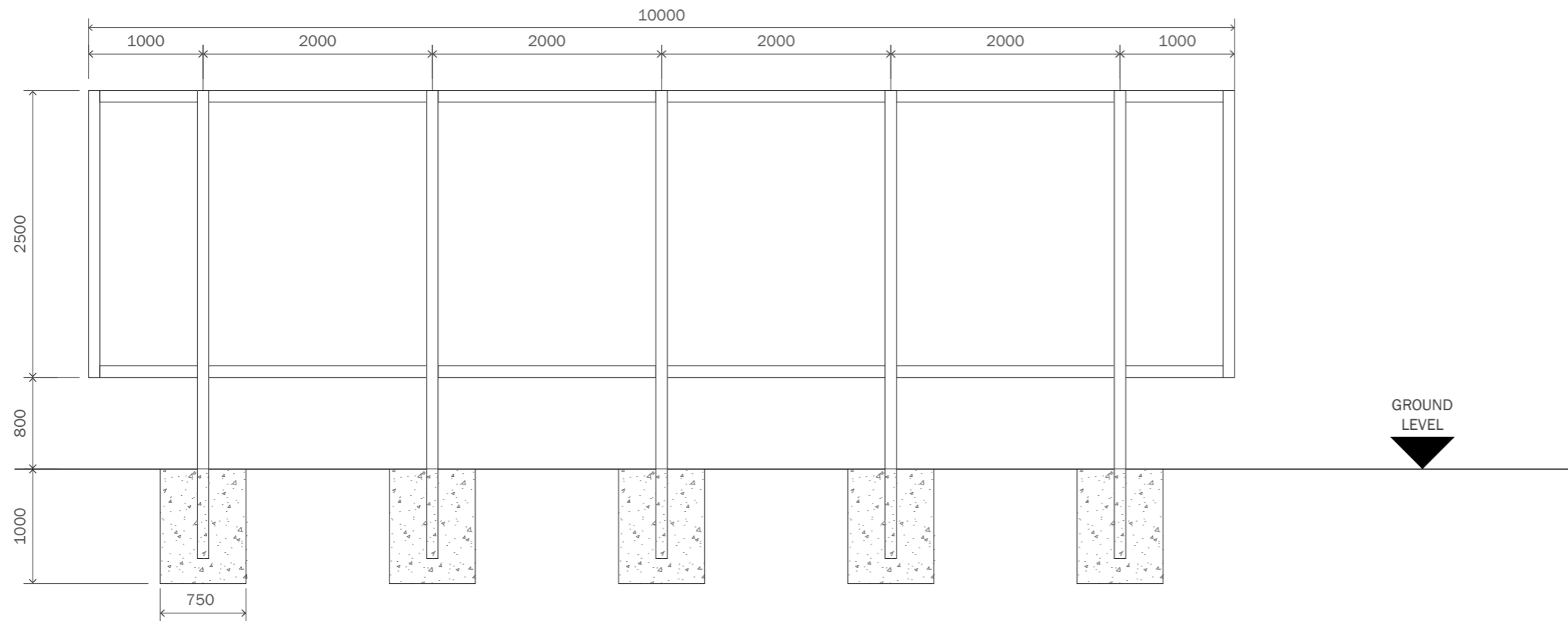


CLIENT :  
VOLVO  
PROJECT :  
EXTERNAL SIGNAGE  
SITE REFERENCE :  
LISTERS LEAMINGTON SPA

PRODUCT TYPE/DOCUMENT TITLE :  
SITE SCHEDULE  
PAGE TITLE :  
SIGN M - 10m SELEKT WALL  
DRAWING NO :  
SS-VOL-V24669-1.14

DESIGN STATUS :  
**NOT FOR CONSTRUCTION**  
PAGE : 14/17  
REV : A  
BY : KG  
SCALE @ A3 : AS SHOWN  
ISSUE : 2  
DATE : 20.04.22





**FRONT ELEVATION**  
scale 1:50

**CONSTRUCTION**

Frame manufactured from SHS steel sections, polyester powdercoated WHITE RAL TBC.

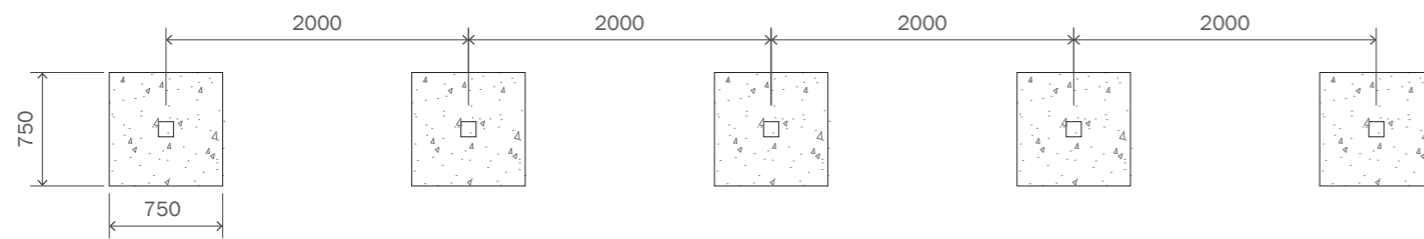
**FOUNDATION**

Bases to be installed by main contractor and require 7-10 days curing time  
See details drawings for base requirements  
Power supply to have waterproof casing.  
Concrete mix design C35.  
Concrete density 24 kN/m<sup>3</sup>.  
Te power supply is required at 5amp single phase.

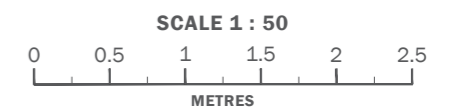
**NOTES**

Structural Engineer to confirm foundations suitable in ground conditions.

Sign to be supplied by Wellstock.



**PLAN VIEW**  
scale 1:50



**CLIENT :**  
VOLVO  
**PROJECT :**  
EXTERNAL SIGNAGE

**SITE REFERENCE :**  
LISTERS LEAMINGTON SPA

**PRODUCT TYPE/DOCUMENT TITLE :**  
SITE SCHEDULE

**PAGE TITLE :**  
SIGN N - 10m SELEKT WALL

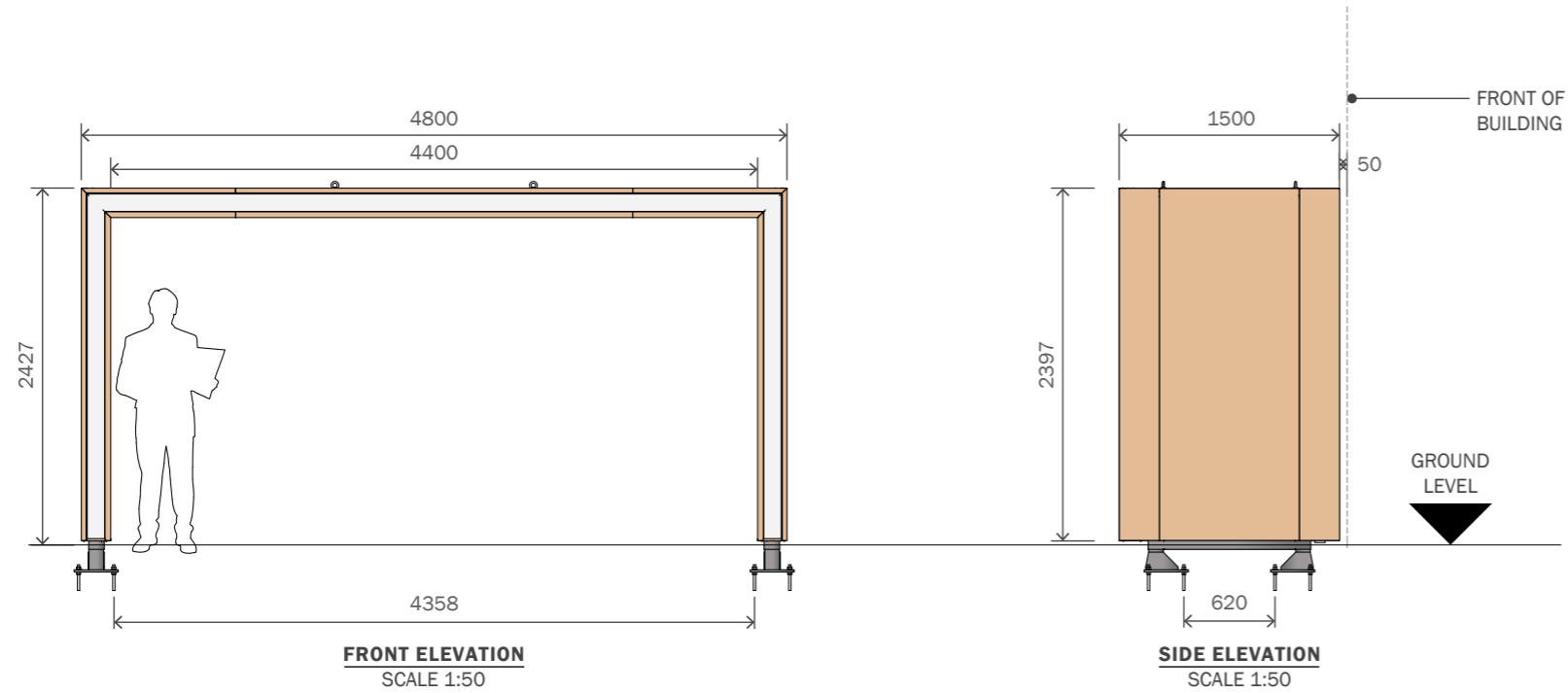
**DRAWING NO. :**  
SS-VOL-V24669-1.15

**DESIGN STATUS :**  
**NOT FOR CONSTRUCTION**

**PAGE :**  
15/17

**REV. BY: SCALE @ A3 :**  
A KG AS SHOWN

**ISSUE: DATE :**  
2 20.04.22



**GENERAL SPECIFICATION**

1 off 4.8m Entrance Portal

**CONSTRUCTION**

3mm folded ACM panels with woodtex LWO finish fixed to mild steel frame work from 100mm x 100mm x 5mm verticals posts with 50mm x 50mm x 3mm horizontal brackets and 15mm base plate painted BLACK RAL 9005, 60% GLOSS. ASGUK 189 extruded aluminium section with Opal 069 acrylic diffuser installed to create Light Line.

**ILLUMINATION**

Oshino Mini Orbis White 6500K

**INSTALLATION**

Pylon sign is to be fixed via M16 FISHER anchor, levelling nut and washers. Grade C35 concrete base. Concrete allowed to cure for 7 days prior to installation of totem. Power cable to be concealed within an armoured sheath cast into the concrete base. 5 amp power puppy required.

For details please see GA-VOL-EX-EP2-1 - C construction drawing.

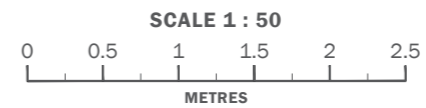
**SIZE**

O/A size: 4800mm x 2427mm x 1500mm.  
O/A weight of sign inc. 10% FOS: 805.24kg.

**PLEASE NOTE:**

When breaking ground deeper than 200mm CAT scanning is required as the minimum assessment of whether it is safe to proceed.

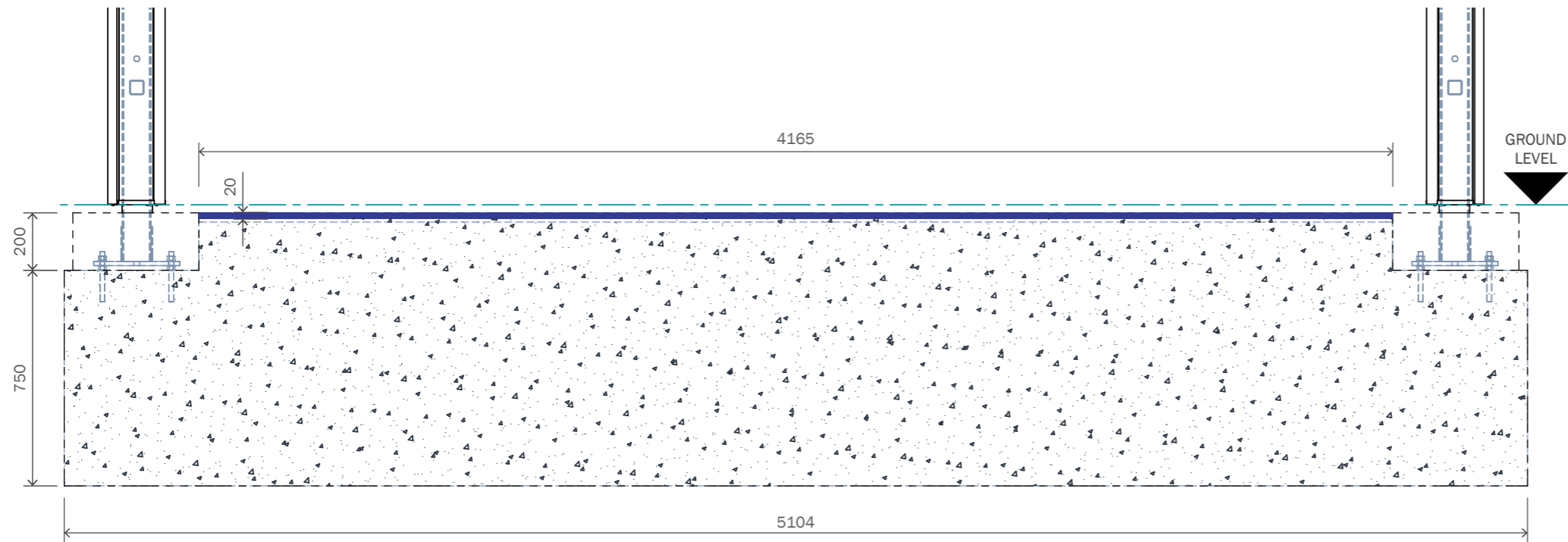
Item purley for Planning Consent only.



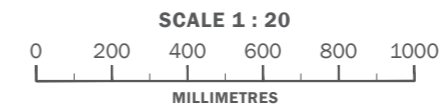
CLIENT :  
VOLVO  
PROJECT :  
EXTERNAL SIGNAGE  
SITE REFERENCE :  
LISTERS LEAMINGTON SPA

PRODUCT TYPE/DOCUMENT TITLE :  
SITE SCHEDULE  
PAGE TITLE :  
SIGN N - 4.8m ENTRANCE PORTAL  
DRAWING NO :  
SS-VOL-V24669-1.16

DESIGN STATUS :  
**NOT FOR CONSTRUCTION**  
PAGE :  
16/17  
REV : BY: SCALE @ A3 :  
A KG AS SHOWN  
ISSUE : DATE :  
2 20.04.22



**FRONT ELEVATION**  
SCALE 1:20



CLIENT :  
VOLVO

PROJECT :  
EXTERNAL SIGNAGE

SITE REFERENCE :  
LISTERS LEAMINGTON SPA

PRODUCT TYPE/DOCUMENT TITLE :  
SITE SCHEDULE

PAGE TITLE :  
SIGN N - 4.8m ENTRANCE PORTAL

DRAWING NO :  
SS-VOL-V24669-1.17

PAGE :  
17/17

DESIGN STATUS :  
**NOT FOR CONSTRUCTION**

REV : BY : SCALE @ A3 :  
A KG AS SHOWN

ISSUE : DATE :  
2 20.04.22



MERSON GROUP  
2 YOUNG PLACE  
EAST KILBRIDE  
GLASGOW  
SCOTLAND  
G75 0TD

---