

---

**PROJECT:**

**VOLVO SINGAGE SPECIFICATION**

**CATEGORY :**

**EXTERNAL SIGNAGE**

**SIGN TYPE :**

**PORTAL**

**VARIANT :**

**ENTRANCE PORTAL OVERALL ASSEMBLY - 4.8m**

---



---

**DRAWING / DOCUMENT NO :**  
**GA-VOL-EX-EP2-1**

**REV :** **C**     **DATE :** **05.07.21**

**DESIGN STATUS :**  
**FOR CONSTRUCTION**

## DESIGN REGISTER

Our design information is issued as a multi-page document. Each document has a unique number and each drawing or page a sequential number of that. Individual drawings/pages within a document have a revision status marked by a letter and a red rev' cloud on the drawing. Each document issue is marked by a number, the table below provides a history of this document.

ISSUE :	DATE :	DESIGNER :	CHECKED :	APPROVED :	DESIGN STATUS :	SUMMARY OF ISSUE :
A	27.05.19	RC	RC	LM	FOR CONSTRUCTION	DRAWING FIRST ISSUED
B	21.11.19	RC	SC	LM	FOR CONSTRUCTION	ANCHORS NOW FISHER NOT HILTI
C	05.07.21	RC	RC	CM	FOR CONSTRUCTION	RE-DRAWN DUE TO CORRUPT FILES

## RISK ELEMENTS

During design development risks are identified on drawings/pages using a bold red dashed box. This could be information or detail yet to be confirmed leading to risk in proceeding or ones that remain in the design but highlighted to reduce risk to construction, safety, health or the environment. The table below shows numbered risks and how these have been managed.

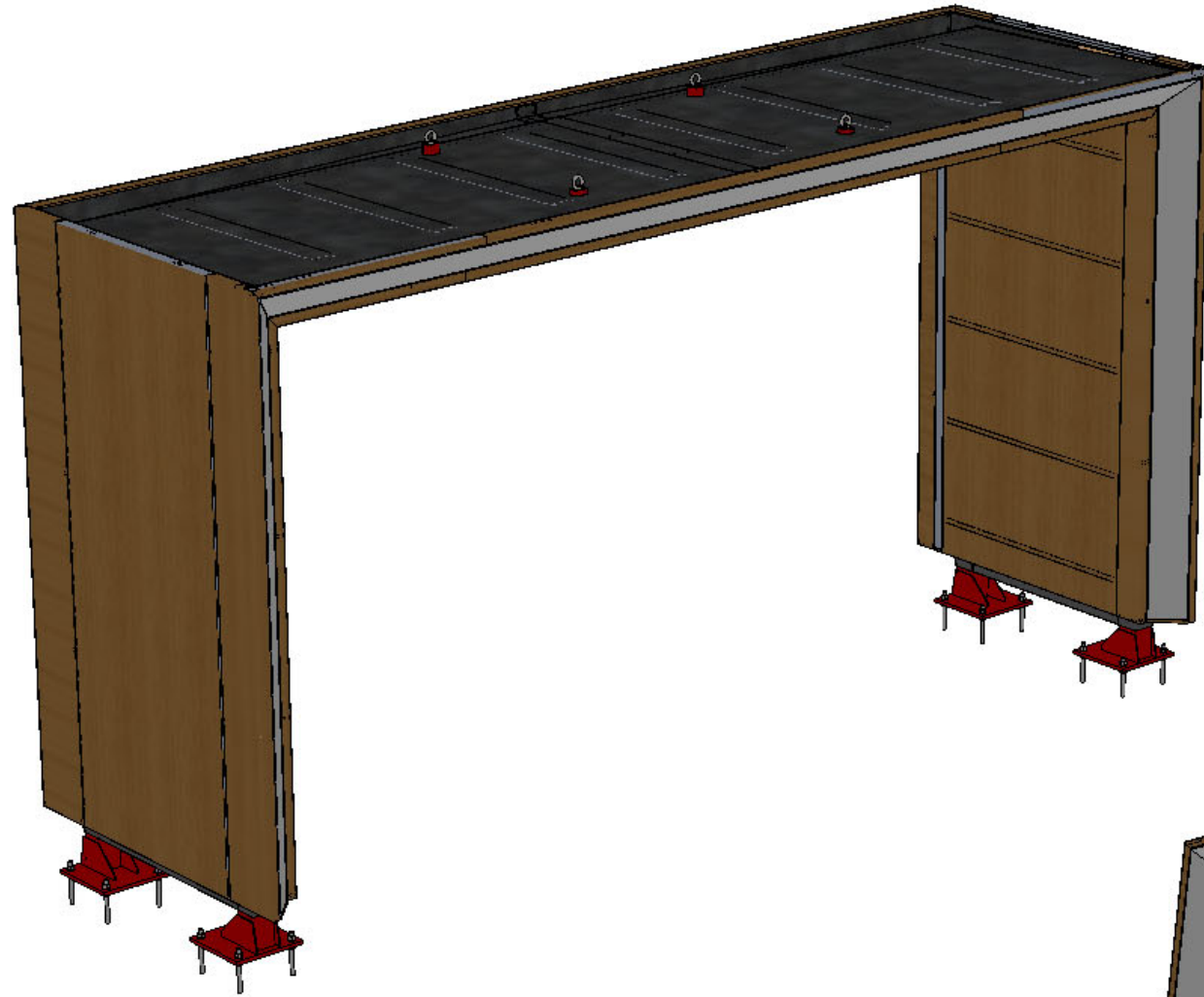
RISK No :	DESCRIPTION OF RISK :	RESOLUTION AGREED :
-	-	-
INDICATED BY :	-----	



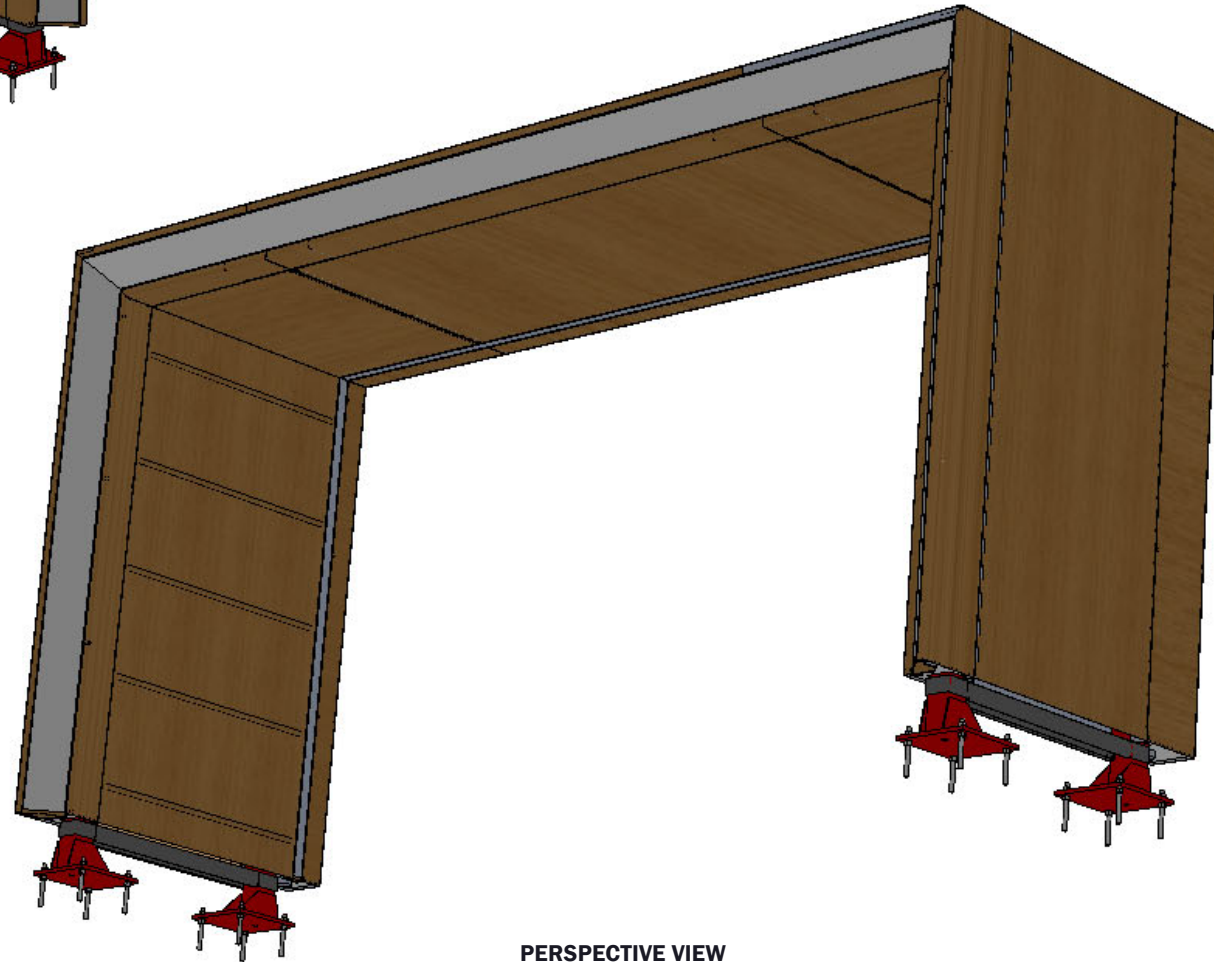
DRAWING / DOCUMENT NO :  
**GA-VOL-EX-EP2-1**

REV : **C**      DATE : **05.07.21**

DESIGN STATUS :  
**FOR CONSTRUCTION**



**PERSPECTIVE VIEW**  
SCALE\_1 : 25



**PERSPECTIVE VIEW**  
SCALE\_1 : 25



LINEAR DIMENSION / TOLERANCE :  
 $\leq 1000 / \pm 1.0$   
 $> 1000 / \pm 2.0$



© COPYRIGHT MERSON GROUP

PROJECT :  
VOLVO SINGAGE SPECIFICATION  
 CATEGORY :  
EXTERNAL SIGNAGE  
 SIGN TYPE :  
PORTAL

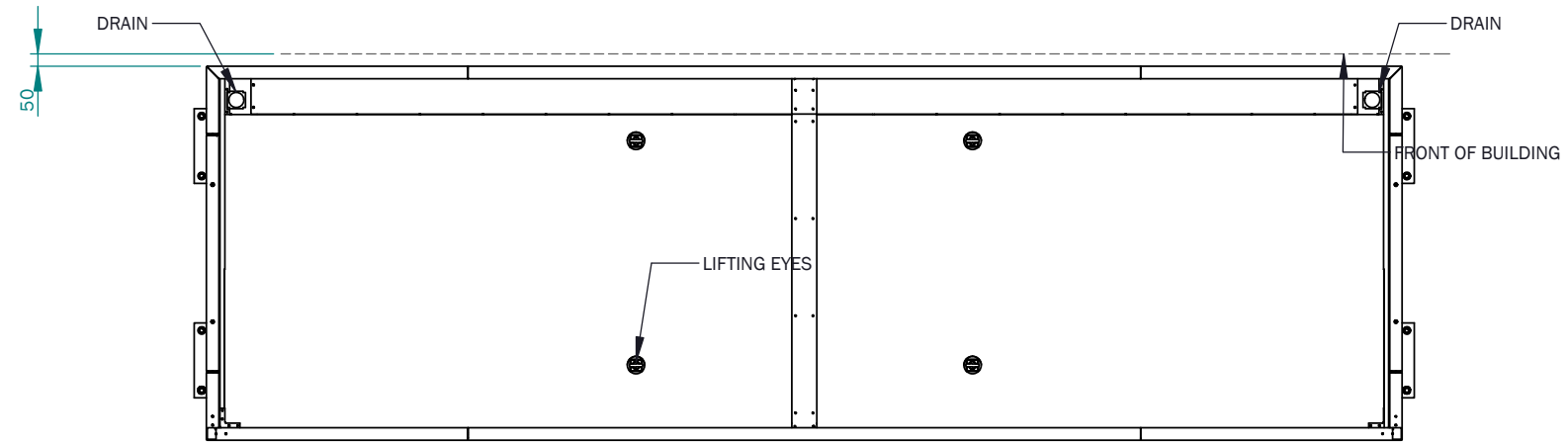
VARIANT :  
ENTRANCE PORTAL OVERALL ASSEMBLY - 4.8m  
 PAGE TITLE :  
DESIGN OVERVIEW  
 DRAWING NO :  
GA-VOL-EX-EP2-1

PAGE:  
1/12

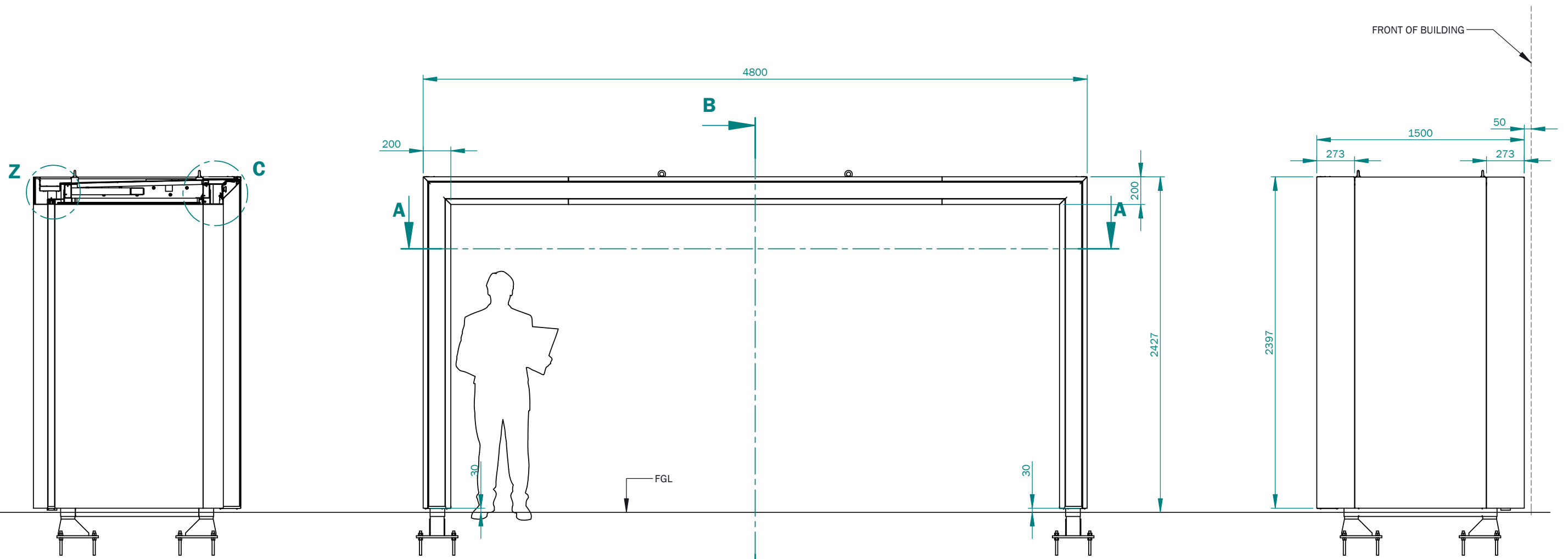
DESIGN STATUS :  
**FOR CONSTRUCTION**

BY: SCALE @ A3 :  
RC AS SHOWN

REV: C      DATE: 05.07.21



**PLAN VIEW**  
SCALE\_1 : 30



**SECTION B-B**  
SCALE\_1 : 30

**B**  
**FRONT ELEVATION**  
SCALE\_1 : 30

**SIDE ELEVATION**  
SCALE\_1 : 30



LINEAR DIMENSION / TOLERANCE :  
 ≤1000 / ±1.0  
 >1000 / ±2.0



© COPYRIGHT MERSON GROUP

PROJECT :  
VOLVO SINGAGE SPECIFICATION

CATEGORY :  
EXTERNAL SIGNAGE

SIGN TYPE :  
PORTAL

VARIANT :  
ENTRANCE PORTAL OVERALL ASSEMBLY - 4.8m

PAGE TITLE :  
GENERAL ARRANGEMENT

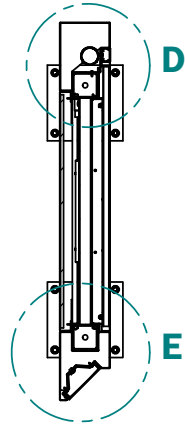
DRAWING NO :  
GA-VOL-EX-EP2-1

PAGE:  
2/12

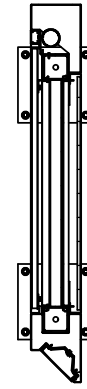
DESIGN STATUS :  
**FOR CONSTRUCTION**

BY: SCALE @ A3 :  
RC AS SHOWN

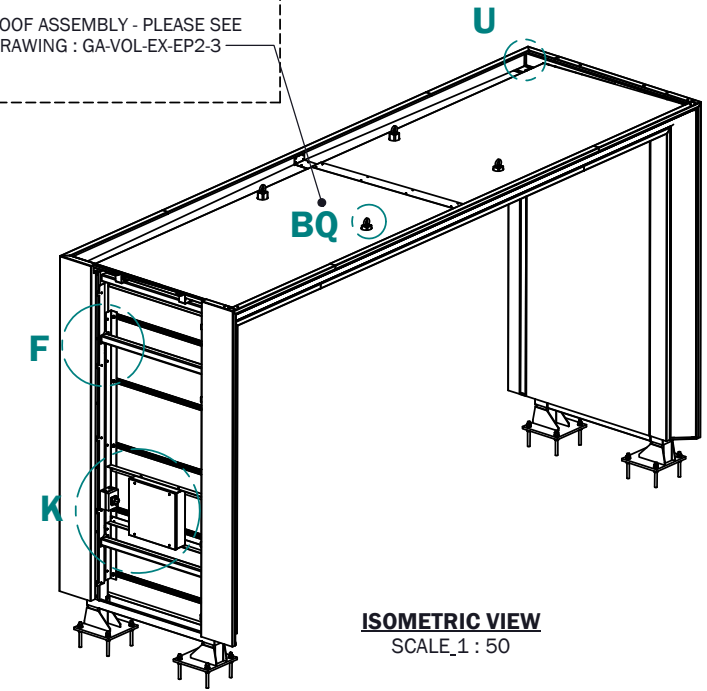
REV: C  
DATE: 05.07.21



**SECTION A-A**  
SCALE\_1 : 30



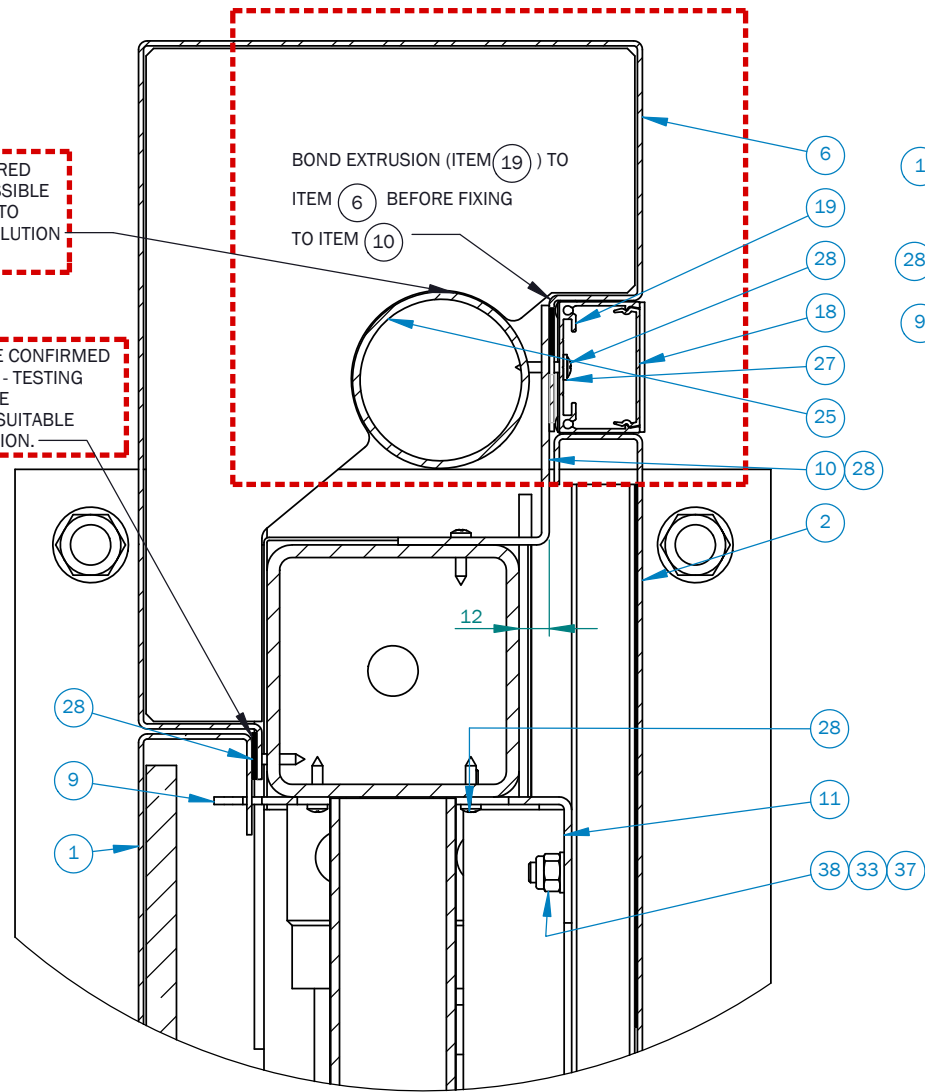
ROOF ASSEMBLY - PLEASE SEE  
DRAWING : GA-VOL-EX-EP2-3



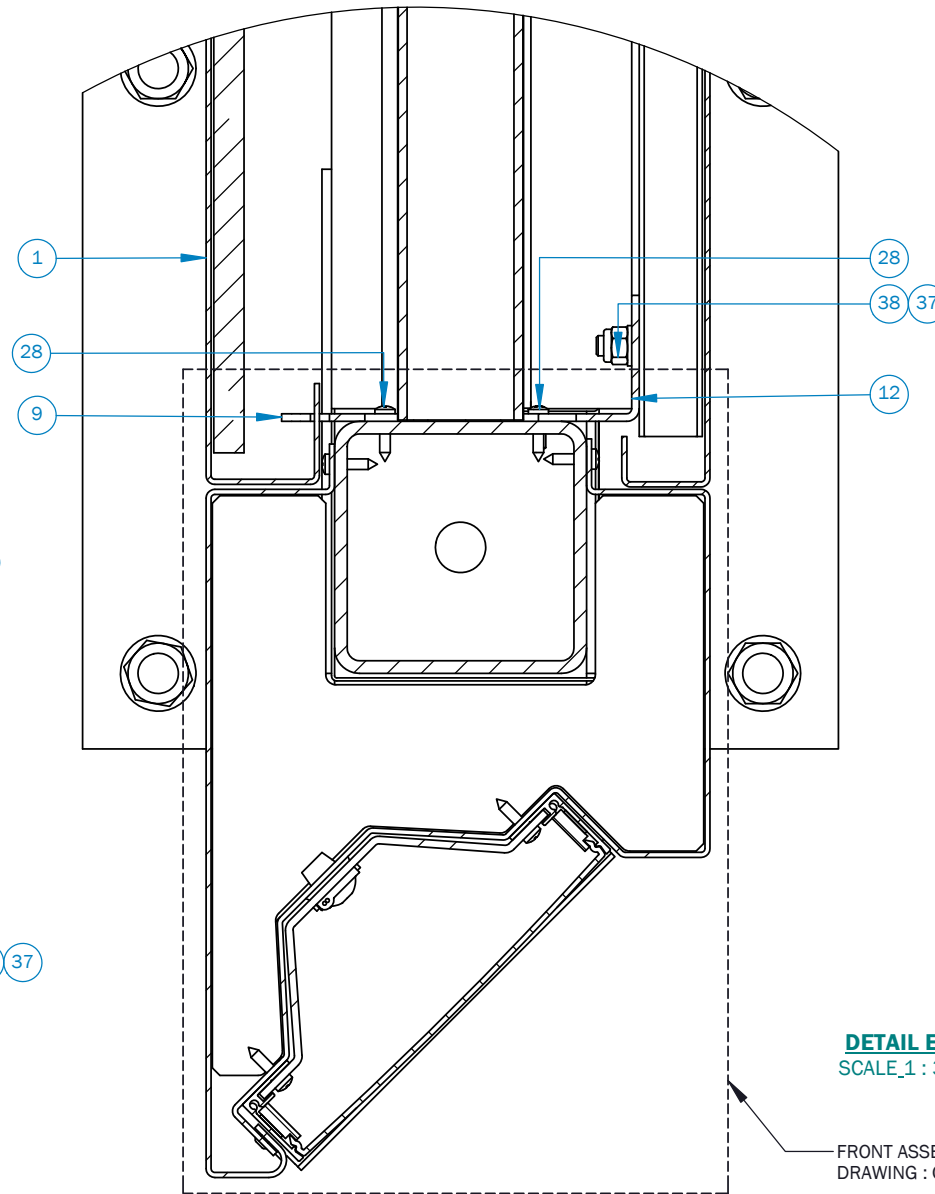
**ISOMETRIC VIEW**  
SCALE\_1 : 50

TRIM FIXINGS IF REQUIRED  
USE RIVETS IF NOT POSSIBLE  
PLEASE REPORT BACK TO  
DESIGNER ON BEST SOLUTION

GASKET TO BE CONFIRMED  
AT ASSEMBLY - TESTING  
TO DETERMINE  
IF GASKET IS SUITABLE  
FOR APPLICATION.

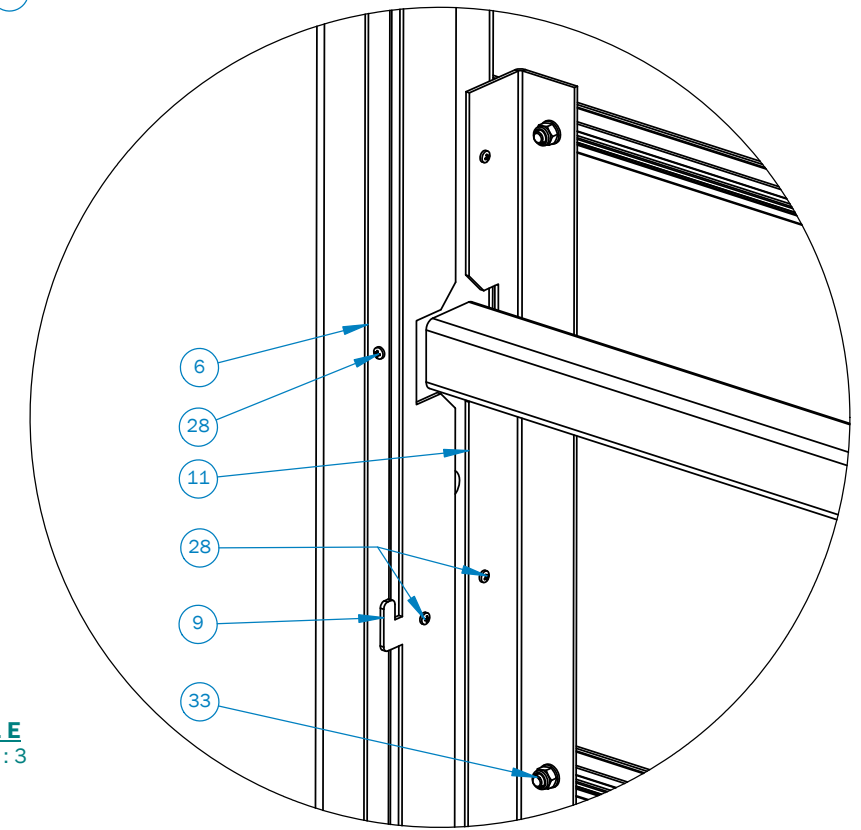


**DETAIL D**  
SCALE\_1 : 3



**DETAIL E**  
SCALE\_1 : 3

FRONT ASSEMBLY - PLEASE SEE  
DRAWING : GA-VOL-EX-EP2-2



**DETAIL F**  
SCALE\_1 : 5



LINEAR DIMENSION / TOLERANCE :  
≤1000 / ±1.0  
>1000 / ±2.0



© COPYRIGHT MERSON GROUP

PROJECT :  
VOLVO SINGAGE SPECIFICATION  
CATEGORY :  
EXTERNAL SIGNAGE  
SIGN TYPE :  
PORTAL

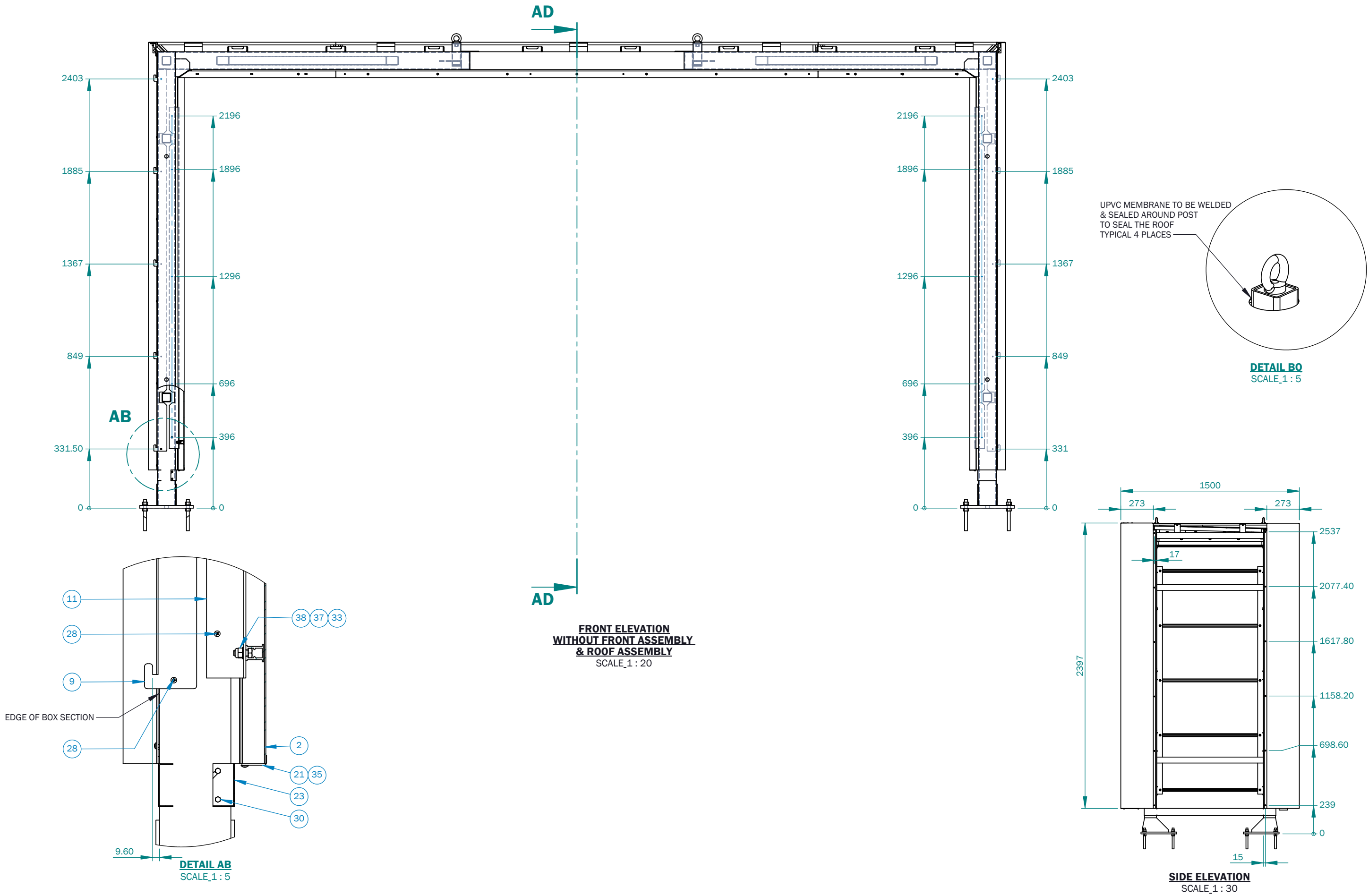
VARIANT :  
ENTRANCE PORTAL OVERALL ASSEMBLY - 4.8m  
PAGE TITLE :  
SECTIONS AND DETAILS - 1  
DRAWING NO :  
GA-VOL-EX-EP2-1

PAGE:  
3/12

DESIGN STATUS :  
**FOR CONSTRUCTION**

BY: SCALE @ A3 :  
RC AS SHOWN

REV: C  
DATE: 05.07.21



LINEAR DIMENSION / TOLERANCE :  
 ≤1000 / ±1.0  
 >1000 / ±2.0



© COPYRIGHT MERSON GROUP

PROJECT :  
VOLVO SINGAGE SPECIFICATION

CATEGORY :  
EXTERNAL SIGNAGE

SIGN TYPE :  
PORTAL

VARIANT :  
ENTRANCE PORTAL OVERALL ASSEMBLY - 4.8m

PAGE TITLE :  
SECTIONS AND DETAILS - 2

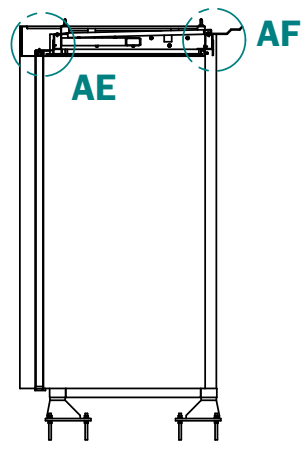
DRAWING NO :  
GA-VOL-EX-EP2-1

DESIGN STATUS :  
**FOR CONSTRUCTION**

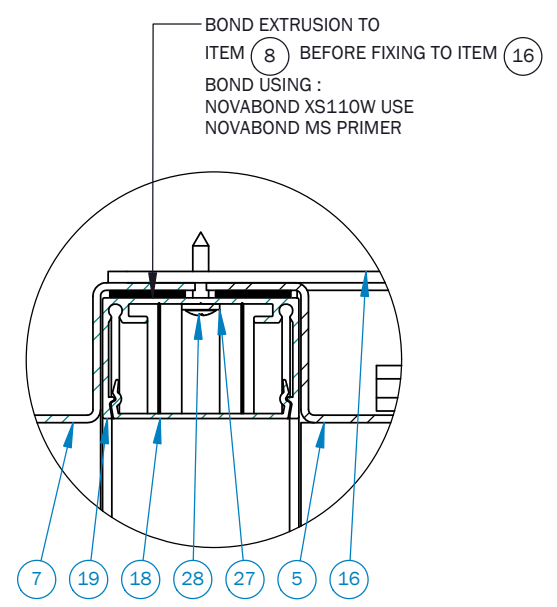
PAGE:  
4/12

BY: SCALE @ A3:  
RC AS SHOWN

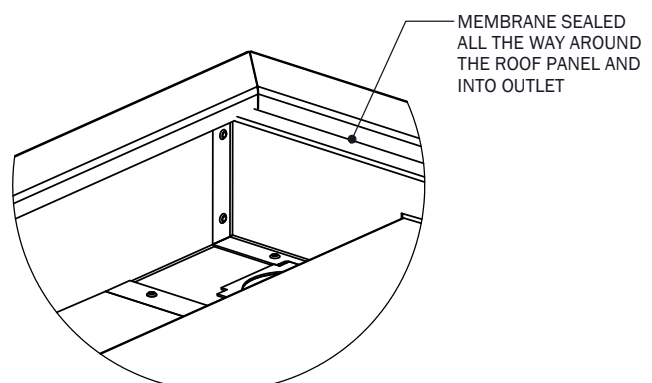
REV: C  
DATE: 05.07.21



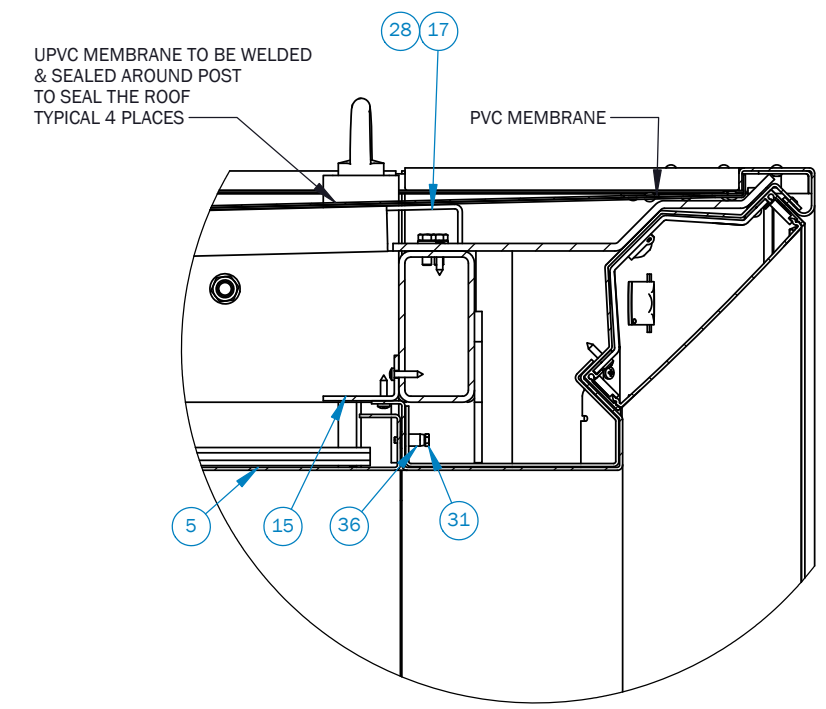
SECTION AD-AD  
SCALE\_1 : 50



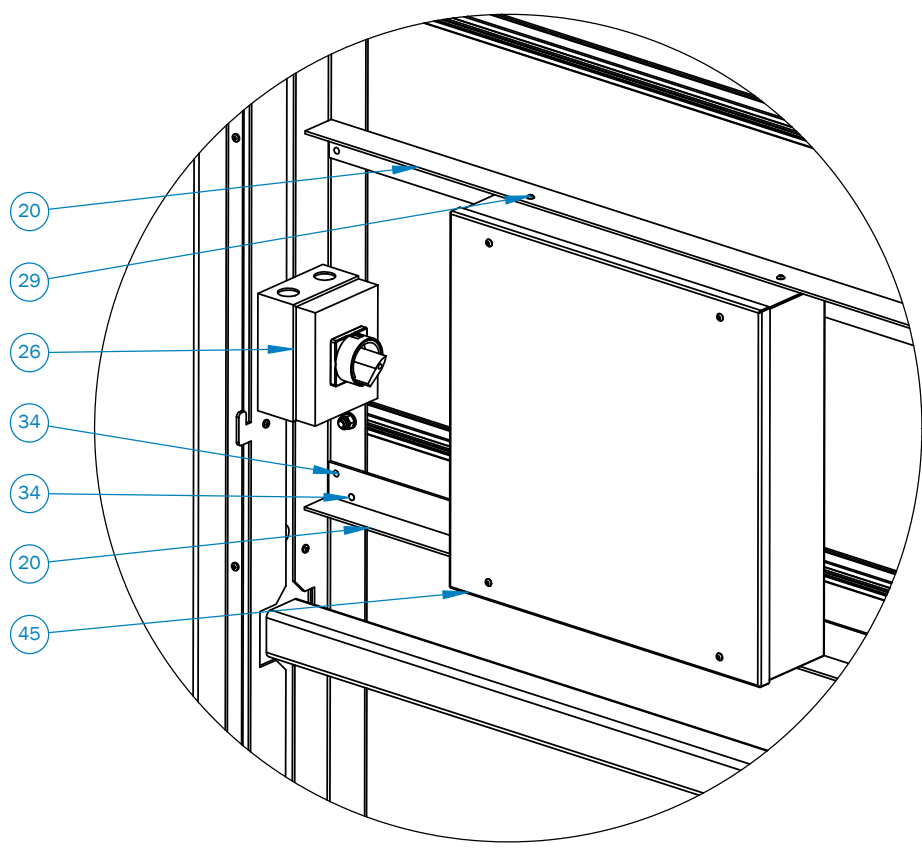
DETAIL BO  
SCALE\_1 : 2



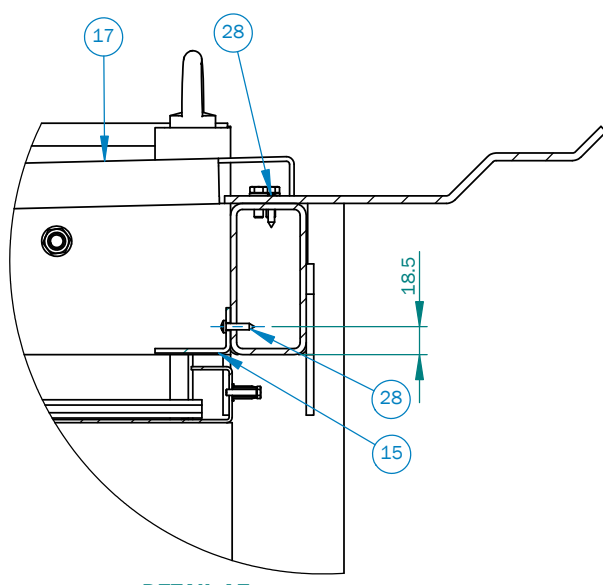
DETAIL U  
SCALE\_1 : 5



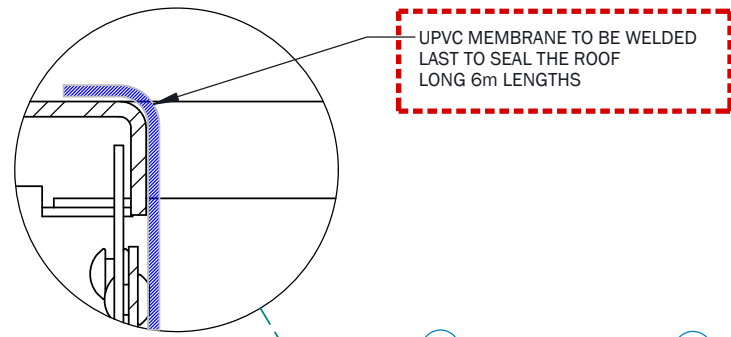
DETAIL C  
SCALE\_1 : 5



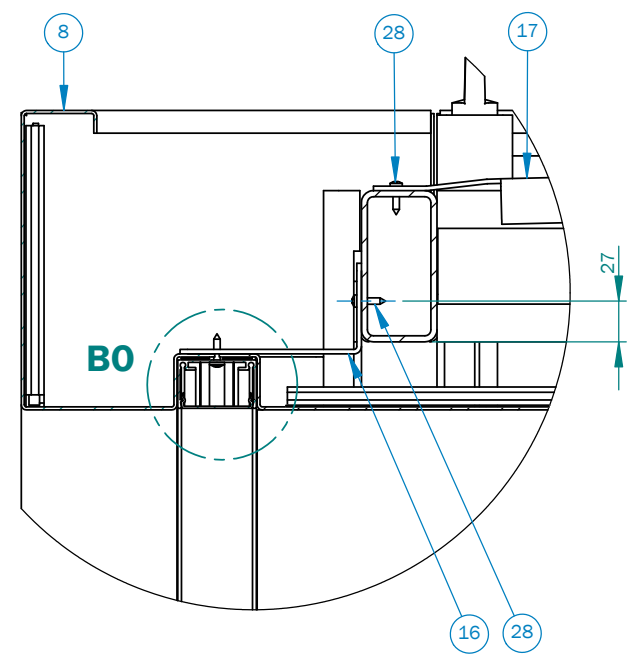
DETAIL K  
SCALE\_1 : 7.5



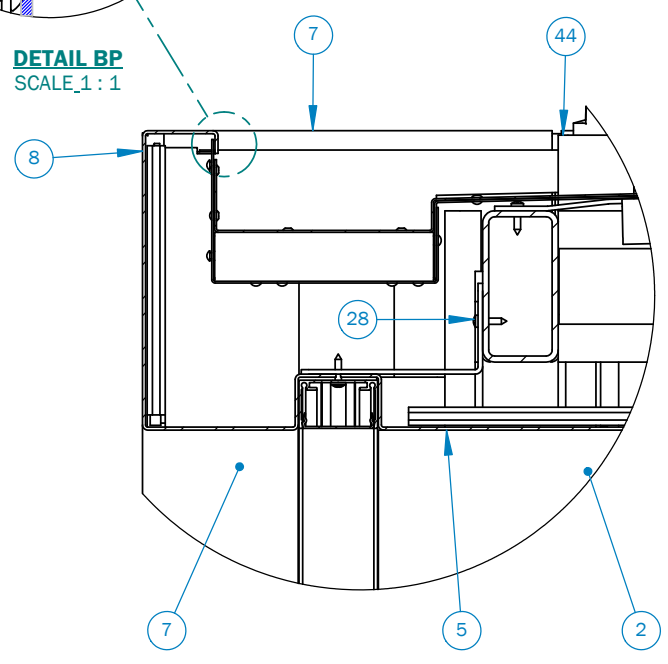
DETAIL AF  
SCALE\_1 : 5



DETAIL BP  
SCALE\_1 : 1



DETAIL AE  
SCALE\_1 : 5



DETAIL Z  
SCALE\_1 : 5



LINEAR DIMENSION / TOLERANCE :  
 ≤1000 / ±1.0  
 >1000 / ±2.0



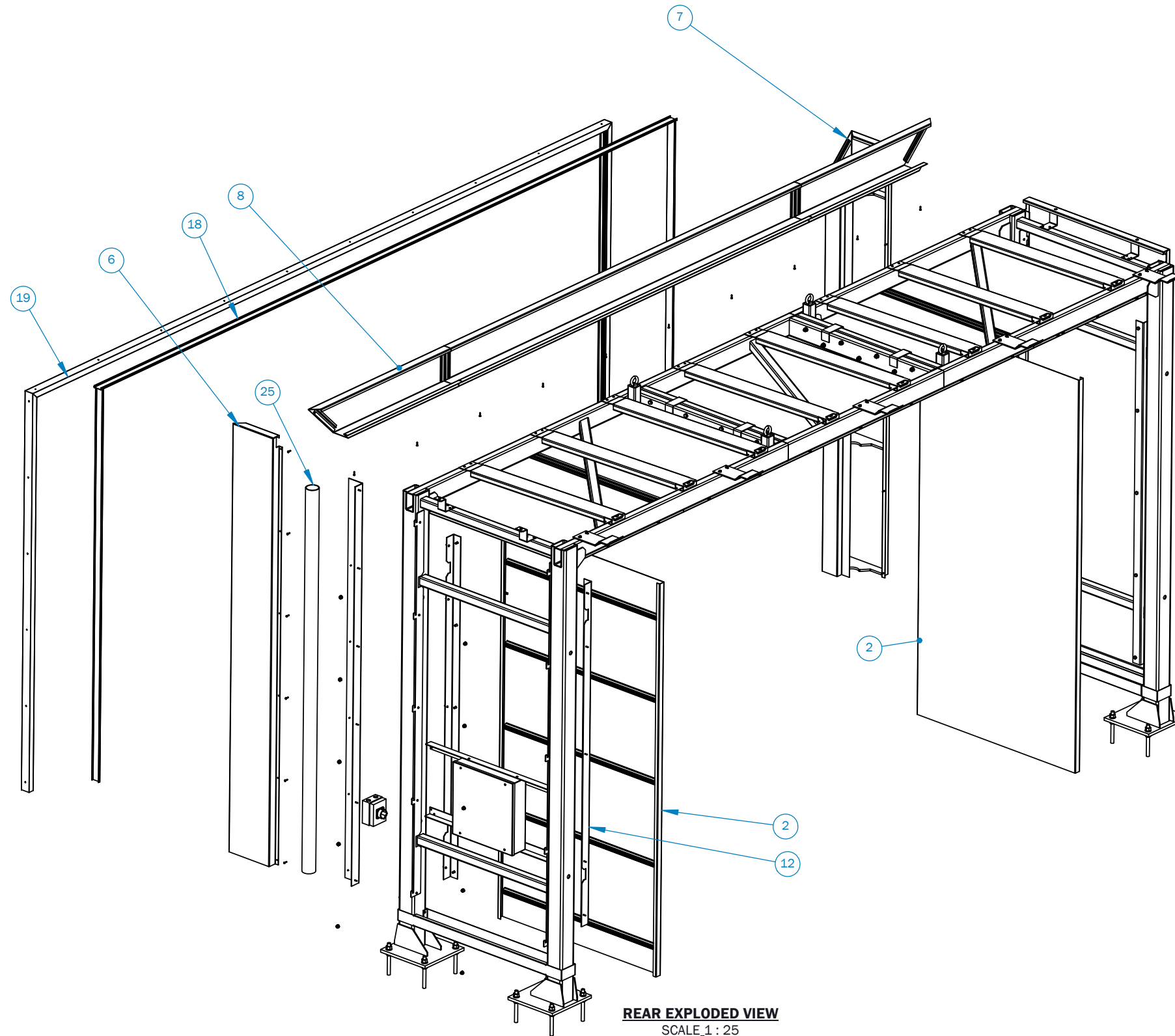
© COPYRIGHT MERSON GROUP

PROJECT :  
VOLVO SINGAGE SPECIFICATION  
 CATEGORY :  
EXTERNAL SIGNAGE  
 SIGN TYPE :  
PORTAL

VARIANT :  
ENTRANCE PORTAL OVERALL ASSEMBLY - 4.8m  
 PAGE TITLE :  
SECTIONS AND DETAILS - 3  
 DRAWING NO :  
GA-VOL-EX-EP2-1

DESIGN STATUS :  
**FOR CONSTRUCTION**

PAGE: 5/12 BY: SCALE @ A3: RC AS SHOWN REV: C DATE: 05.07.21



LINEAR DIMENSION / TOLERANCE :  
 $\leq 1000 / \pm 1.0$   
 $> 1000 / \pm 2.0$



© COPYRIGHT MERSON GROUP

PROJECT :  
VOLVO SINGAGE SPECIFICATION  
 CATEGORY :  
EXTERNAL SIGNAGE  
 SIGN TYPE :  
PORTAL

VARIANT :  
ENTRANCE PORTAL OVERALL ASSEMBLY - 4.8m  
 PAGE TITLE :  
EXPLODED ASSEMBLY - 1  
 DRAWING NO :  
GA-VOL-EX-EP2-1

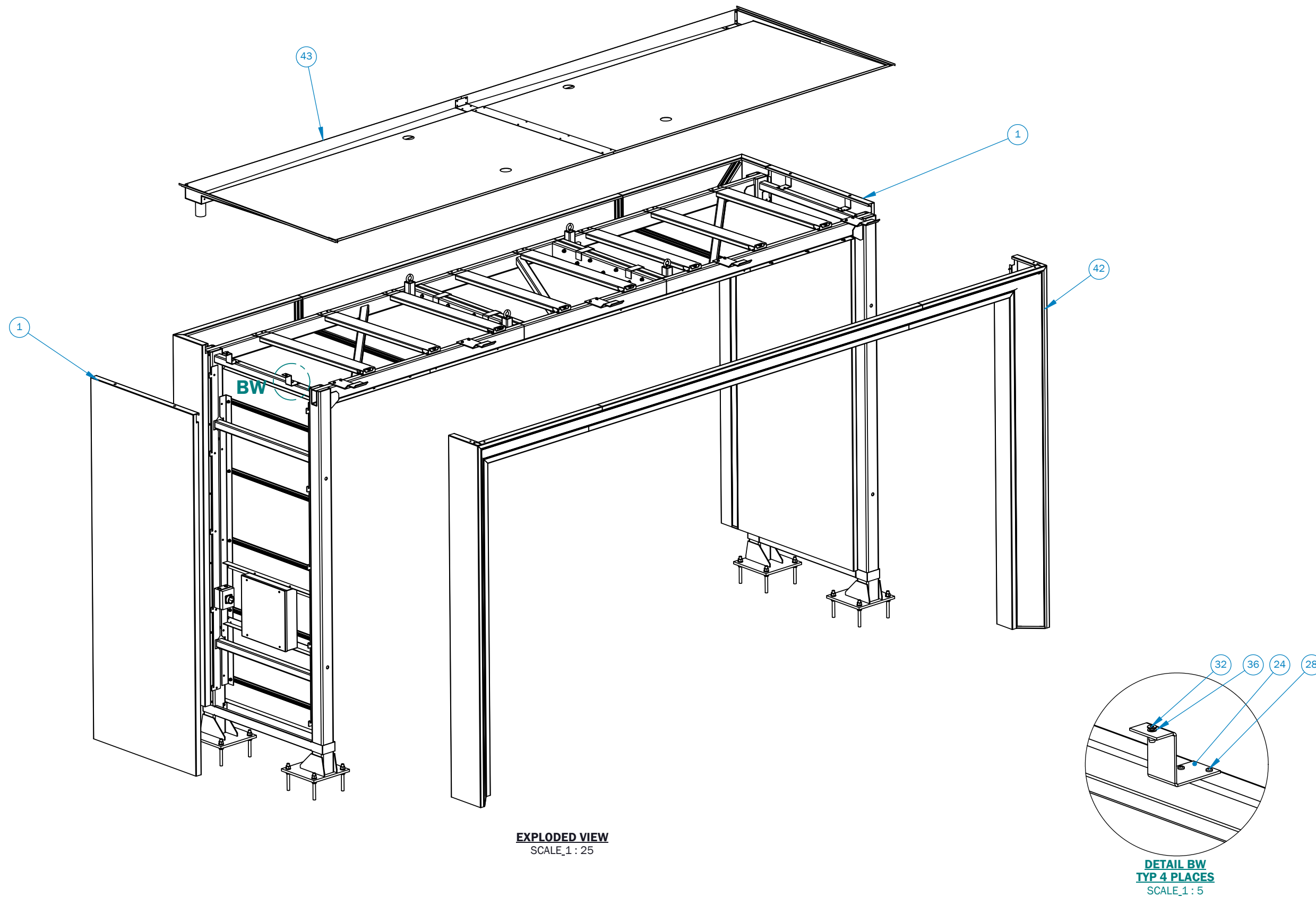
PAGE:  
6/12

DESIGN STATUS :  
**FOR CONSTRUCTION**

BY: SCALE @ A3 :  
RC AS SHOWN

REV: DATE:  
C 05.07.21





**EXPLODED VIEW**  
SCALE\_1 : 25

**DETAIL BW**  
**TYP 4 PLACES**  
SCALE\_1 : 5



LINEAR DIMENSION / TOLERANCE :  
 ≤1000 / ±1.0  
 >1000 / ±2.0



© COPYRIGHT MERSON GROUP

PROJECT :  
VOLVO SINGAGE SPECIFICATION  
 CATEGORY :  
EXTERNAL SIGNAGE  
 SIGN TYPE :  
PORTAL

VARIANT :  
ENTRANCE PORTAL OVERALL ASSEMBLY - 4.8m  
 PAGE TITLE :  
EXPLODED ASSEMBLY - 2  
 DRAWING NO :  
GA-VOL-EX-EP2-1

PAGE:  
7/12

DESIGN STATUS :  
**FOR CONSTRUCTION**

BY: SCALE @ A3 :  
RC AS SHOWN

REV: C      DATE: 05.07.21

PART NO.	PART NAME	DESCRIPTION	Default/ QTY.	PART WEIGHT (KG)	TOTAL WEIGHT (KG)
1	PD-VOL-EX-EP-0043-FX	2mm - ROUTER CUT & FOLDED - 3003-H44 ALUMINIUM - REYNOLUX DG5000 - 3 COAT - PALE OAK - MATTE BACKED WITH MARINE GRADE PLYWOOD BONDED USING NOVABOND XS110W & SIMSON ISR 70-03	2	29.33	58.66
2	PD-VOL-EX-EP-0044-FX	2mm - ROUTER CUT & FOLDED - 3003-H44 ALUMINIUM - REYNOLUX DG5000 - 3 COAT - PALE OAK - MATTE TRAFFIC CHANNEL - SIGNPOST MEDIUM (6082 T6) BONDED USING NOVABOND XS110W & SIMSON ISR 70-03	2	16.68	33.36
3	PD-VOL-EX-EP2-0046-FX	2mm - ROUTER CUT & FOLDED - 3003-H44 ALUMINIUM - REYNOLUX DG5000 - 3 COAT - PALE OAK TRAFFIC CHANNEL - SIGNPOST MEDIUM (6082 T6) MERSON INTERLOCK BONDED USING NOVABOND XS110W & SIMSON ISR 70-03	1	6.22	6.22
4	PD-VOL-EX-EP2-0046-FX	2mm - ROUTER CUT & FOLDED - 3003-H44 ALUMINIUM - REYNOLUX DG5000 - 3 COAT - PALE OAK - MATTE TRAFFIC CHANNEL - SIGNPOST MEDIUM (6082 T6) MERSON INTERLOCK BONDED USING NOVABOND XS110W & SIMSON ISR 70-03	1	6.22	6.22
5	PD-VOL-EX-EP-0048-FX	2mm - ROUTER CUT & FOLDED - 3003-H44 ALUMINIUM - REYNOLUX DG5000 - 3 COAT - PALE OAK - MATTE TRAFFIC CHANNEL - SIGNPOST MEDIUM (6082 T6) MERSON INTERLOCK BONDED USING NOVABOND XS110W & SIMSON ISR 70-03	1	18.62	18.62
6	PD-VOL-EX-EP-0052-FX	2mm - ROUTER CUT & FOLDED - 3003-H44 ALUMINIUM - REYNOLUX DG5000 - 3 COAT - PALE OAK 10MM - ROUTER CUT - FOAMEX - FOR FORMING BONDED USING SIMSON ISR 70-03	1	9.92	9.92
7	PD-VOL-EX-EP-0053-FX	2mm - ROUTER CUT & FOLDED - 3003-H44 ALUMINIUM - REYNOLUX DG5000 - 3 COAT - PALE OAK 10MM - ROUTER CUT - FOAMEX - FOR FORMING BONDED USING SIMSON ISR 70-03	1	9.92	9.92
8	PD-VOL-EX-EP2-0055-FX	2mm - ROUTER CUT & FOLDED - 3003-H44 ALUMINIUM - REYNOLUX DG5000 - 3 COAT - PALE OAK	1	10.93	10.93
9	PD-VOL-EX-EP-0057-XX	3mm - ROUTER CUT - 3103-H14 GRADE ALUMINIUM - NO FINISH	4	0.93	3.72
10	PD-VOL-EX-EP-0058-FX	3mm - ROUTER CUT & FOLDED - 3103-H14 GRADE ALUMINIUM - NO FINISH	2	2.75	5.5
11	PD-VOL-EX-EP-0059-FX	3mm - ROUTER CUT & FOLDED - 3103-H14 GRADE ALUMINIUM - NO FINISH	2	1.54	3.08
12	PD-VOL-EX-EP-0060-FX	3mm - ROUTER CUT & FOLDED - 3103-H14 GRADE ALUMINIUM - MILL FINISH	2	1.54	3.08
13	PD-VOL-EX-EP2-0062-FX	3mm - ROUTER CUT & FOLDED - 3103-H14 GRADE ALUMINIUM - NO FINISH	1	3.14	3.14
14	PD-VOL-EX-EP-0067-FX	3mm - ROUTER CUT & FOLDED - 3103-H14 GRADE ALUMINIUM - NO FINISH	2	0.87	1.74
15	PD-VOL-EX-EP2-0068-FX	3mm - ROUTER CUT & FOLDED - 3103-H14 GRADE ALUMINIUM - NO FINISH	1	0.63	0.63
16	PD-VOL-EX-EP2-0065-FX	3mm - ROUTER CUT & FOLDED - 3103-H14 GRADE ALUMINIUM - MILL FINISH	1	3.14	3.14
17	PD-VOL-EX-EP-0070-FX	3mm - ROUTER CUT & FOLDED - 3103-H14 ALUMINIUM - NO FINISH	8	1.49	11.92
18	PD-VOL-EX-EP-0076-MX	6049-C1S BC75WHI WHITE OPAL PMMA IMPACT RESISTANT POLYMETHYL METACRYLATE	1	2.08	2.08
19	PD-VOL-EX-EP-0077-MX	ASG189 - EXTRUSION - POWDERCOATED WHITE RAL 9003 - 30% GLOSS	1	5.55	5.55
20	PD-VOL-EX-EP-0071-MX	40 x 40 x 3 - ALUMINIUM ANGLE - MILL FINISH	2	0.55	1.1
21	PD-VOL-EX-EP-0072-FX	2mm - ROUTER CUT & FOLDED - 3003-H44 ALUMINIUM - REYNOLUX DG5000 - 3 COAT - PALE OAK - MATTE	2	0.01	0.02
22	PD-VOL-EX-EP-0073-FX	1.2mm - ROUTER CUT & FOLDED - 3103-H14 ALUMINIUM - POWDERCOATED BLACK RAL 9005 - 60% GLOSS	2	0.42	0.84
23	PD-VOL-EX-EP-0074-FX	1.2mm - ROUTER CUT & FOLDED - 3103-H14 ALUMINIUM - POWDERCOATED BLACK RAL 9005 - 60% GLOSS	2	0.27	0.54
24	PD-VOL-EX-EP-0075-FX	3mm - ROUTER CUT & FOLDED - 3103-H14 ALUMINIUM - NO FINISH	4	0.07	0.28
25	DRAINAGE PIPE	Ø70x3 - ALUMINIUM TUBE - BOTTOM POWERCOATED BLACK RAL 9005 - 60% GLOSS	2	3.69	7.38
26	ISOLATOR SWITCH	ISOLATOR SWITCH RS COMPONENTS - 466-172	1	0.89	0.89
27	LED STRIP	OSHINO - FLEXILED-BA120 - PURE WHITE - 6500K - DC12V	1	0.16	0.16
28	MAIN FIXING SCREWS	TIMCO - SELF DRILLING SCREWS - ST4.2 X 25 - TIMCO CODE : 00025WHSD	145	0.003	0.435
29	M4 x 12 SCREW	M4 x 12 - BUTTON HEAD CAPSCREW	4	SW-Mass	0
30	M4 x 16 SET SCREW	M4 x 16 - HEXAGONAL HEAD SET SCREW	8		0
31	M4 x 20 SET SCREW	M4 x 20 - HEXAGONAL HEAD SET SCREW	3	0.00	0
32	M6 x 20 SCREW	M6 x 20 - HEXAGONAL SOCKET HEAD COUNTERSUNK SCREW	4	SW-Mass	0
33	M8 x 20 SET SCREW	M8 x 20 - HEXAGONAL HEAD SET SCREW	20	0.01	0.2
34	4mm RIVET	4mm - RIVET	8	0.0004	0.0032
35	No.8 x 13 Self Tapper	No.8 x 13 - FLANGE HEAD SELF TAPPING SCREW (ST4.2)	4	0.0022	0.0088
36	M6 Rivnut	M6 STAINLESS STEEL RIVNUT	7	0.00	0
37	M8 WASHER	M8 - PLAIN WASHER	20	0.002	0.04
38	M8 Nut	M8 - HEXAGONAL NYLOCK NUT	20	0.01	0.2
39	M16 NUT	M16 - HEXAGONAL NUT	32	0.042	1.344
40	M16 Washer	M16 - PLAIN WASHER	16	0.011	0.176
41	M16 x 175 - FISHER ANCHOR	M16 x 175 - A4 STAINLESS STEEL - THREADED ROD PROPERTY CLASS A4-70 - FISHER FIS SB 390S RESIN	16	0.27	4.32
42	FRONT LIGHT ASSEMBLY	SEE GA-VOL-EX-EP2-2 - FOR FULL DETAILS AND SPEC	1	67.93	67.93
43	ROOF ASSEMBLY	SEE GA-VOL-EX-EP2-3 - FOR FULL DETAILS AND SPEC	1	80.52	80.52
44	STEELWORK ASSEMBLY	SEE GA-VOL-EX-EP2-4 - FOR FULL DETAILS AND SPEC	1	361.86	361.86
45	GA-VOL-EX-EPX-1	SEE GA-VOL-EX-EPX-1 - FOR FULL DETAILS AND SPEC	1	6.36	6.36
TOTAL WEIGHT (kg) INC. 10% FOS					805.24

ALL FASTENERS TO BE NICKEL PLATED STEEL UNLESS OTHERWISE STATED

PLEASE SEE LIFTING & SHIPPING PAGE FOR INSTALLATION TOOLS



LINEAR DIMENSION / TOLERANCE :  
≤1000 / ±1.0  
>1000 / ±2.0



© COPYRIGHT MERSON GROUP

PROJECT :  
VOLVO SINGAGE SPECIFICATION

CATEGORY :  
EXTERNAL SIGNAGE

SIGN TYPE :  
PORTAL

VARIANT :  
ENTRANCE PORTAL OVERALL ASSEMBLY - 4.8m

PAGE TITLE :  
WRITTEN SPECIFICATION - 1

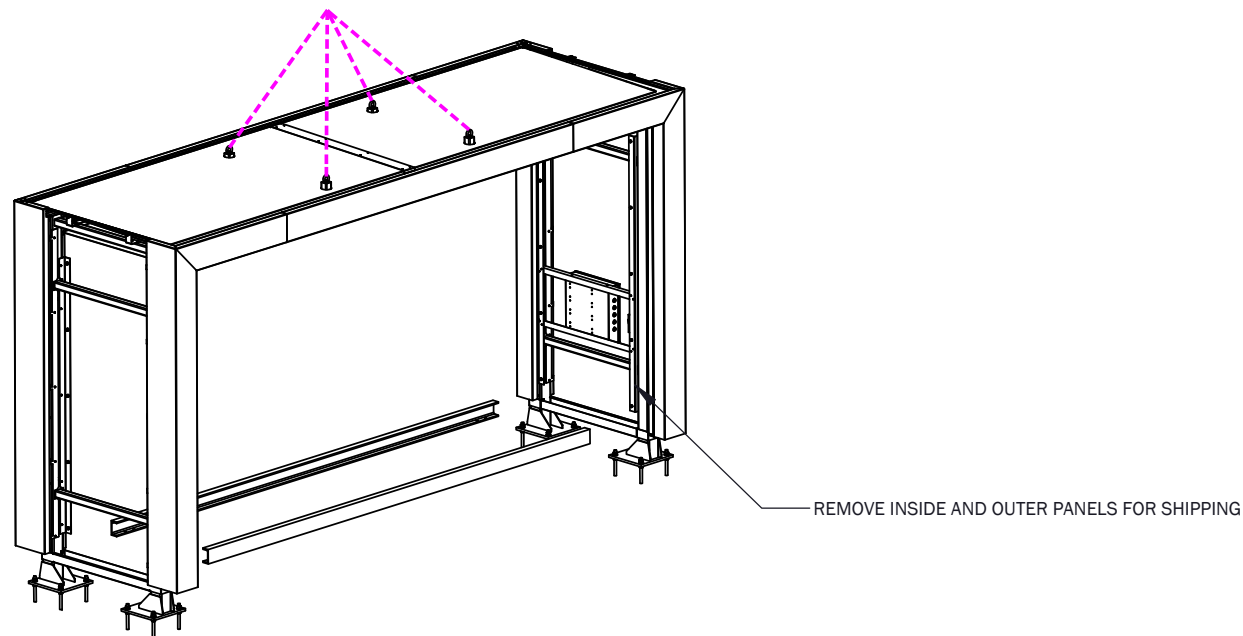
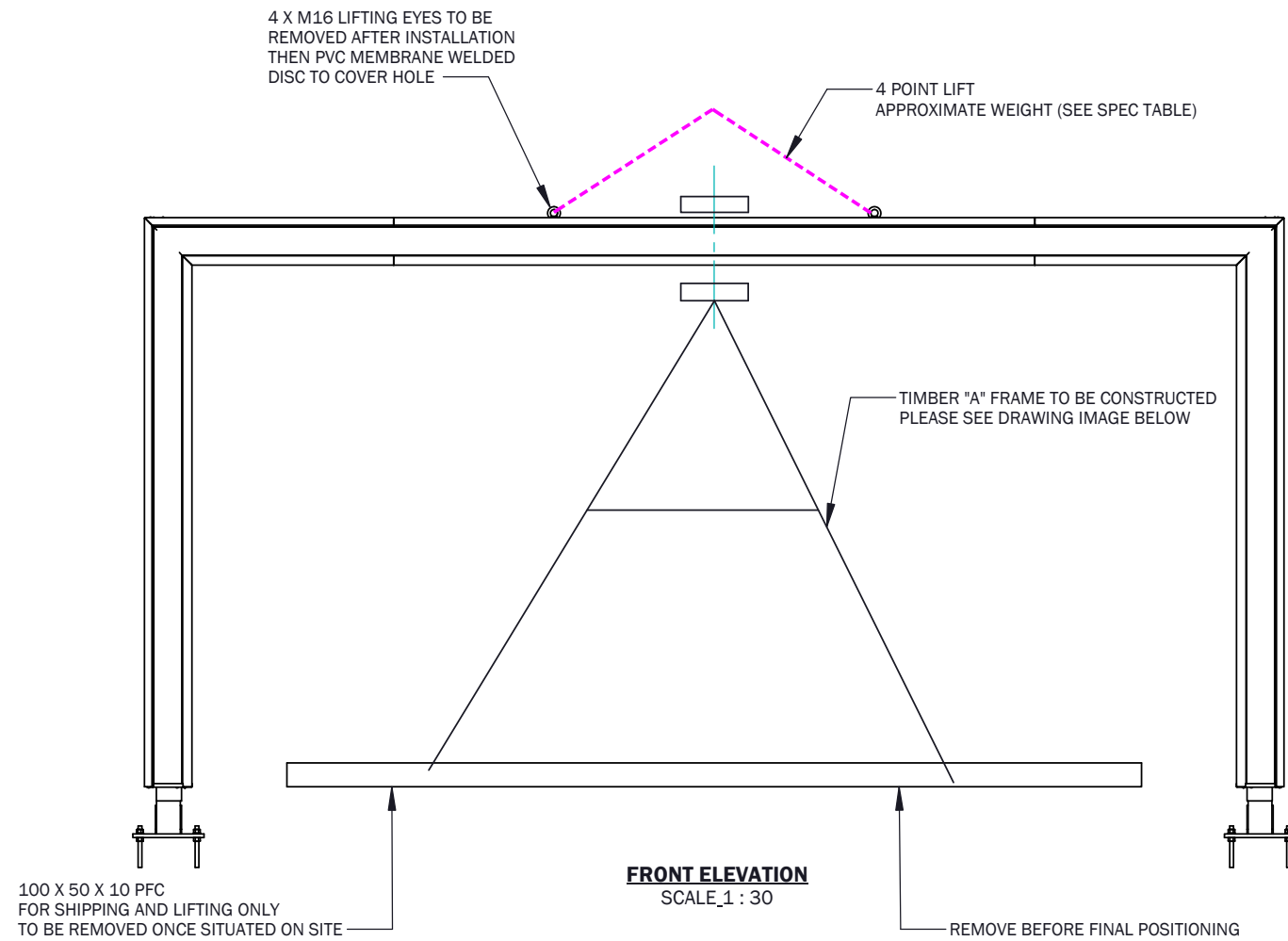
DRAWING NO :  
GA-VOL-EX-EP2-1

PAGE:  
8/12

DESIGN STATUS :  
**FOR CONSTRUCTION**

BY: SCALE @ A3 :  
RC AS SHOWN

REV: DATE:  
C 05.07.21



LINEAR DIMENSION / TOLERANCE :  
 ≤1000 / ±1.0  
 >1000 / ±2.0



© COPYRIGHT MERSON GROUP

PROJECT :  
VOLVO SINGAGE SPECIFICATION

CATEGORY :  
EXTERNAL SIGNAGE

SIGN TYPE :  
PORTAL

VARIANT :  
ENTRANCE PORTAL OVERALL ASSEMBLY - 4.8m

PAGE TITLE :  
LIFTING & SHIPPING DETAILS

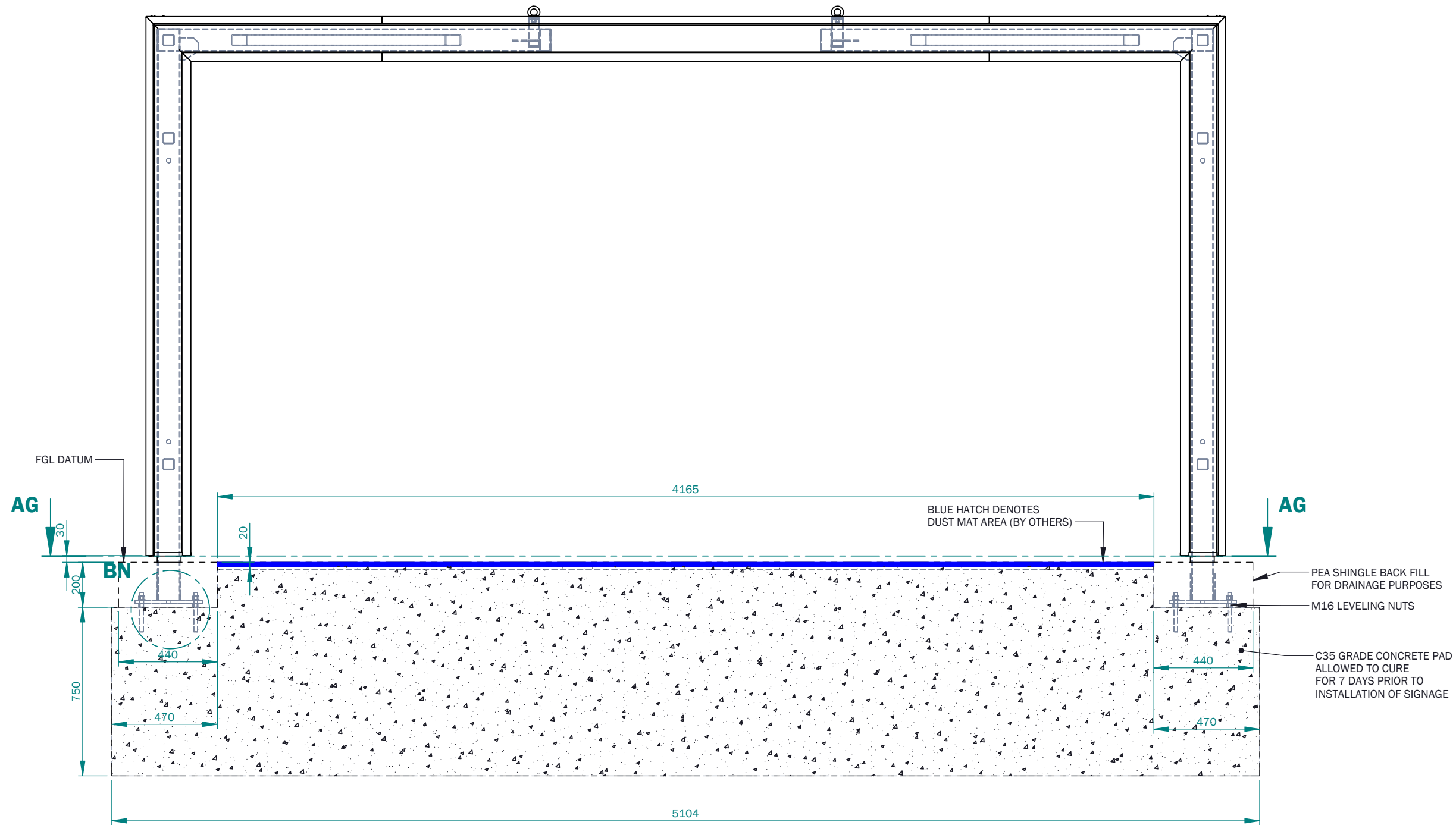
DRAWING NO :  
GA-VOL-EX-EP2-1

PAGE:  
9/12

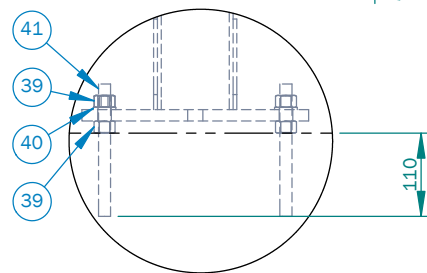
DESIGN STATUS :  
**FOR CONSTRUCTION**

BY: SCALE @ A3:  
RC AS SHOWN

REV: DATE:  
C 05.07.21



**FRONT ELEVATION**  
SCALE\_1 : 20



**DETAIL BN**  
**TYP 16 PLACES**  
SCALE\_1 : 10



LINEAR DIMENSION / TOLERANCE :  
 ≤1000 / ±1.0  
 >1000 / ±2.0



© COPYRIGHT MERSON GROUP

PROJECT :  
VOLVO SINGAGE SPECIFICATION  
 CATEGORY :  
EXTERNAL SIGNAGE  
 SIGN TYPE :  
PORTAL

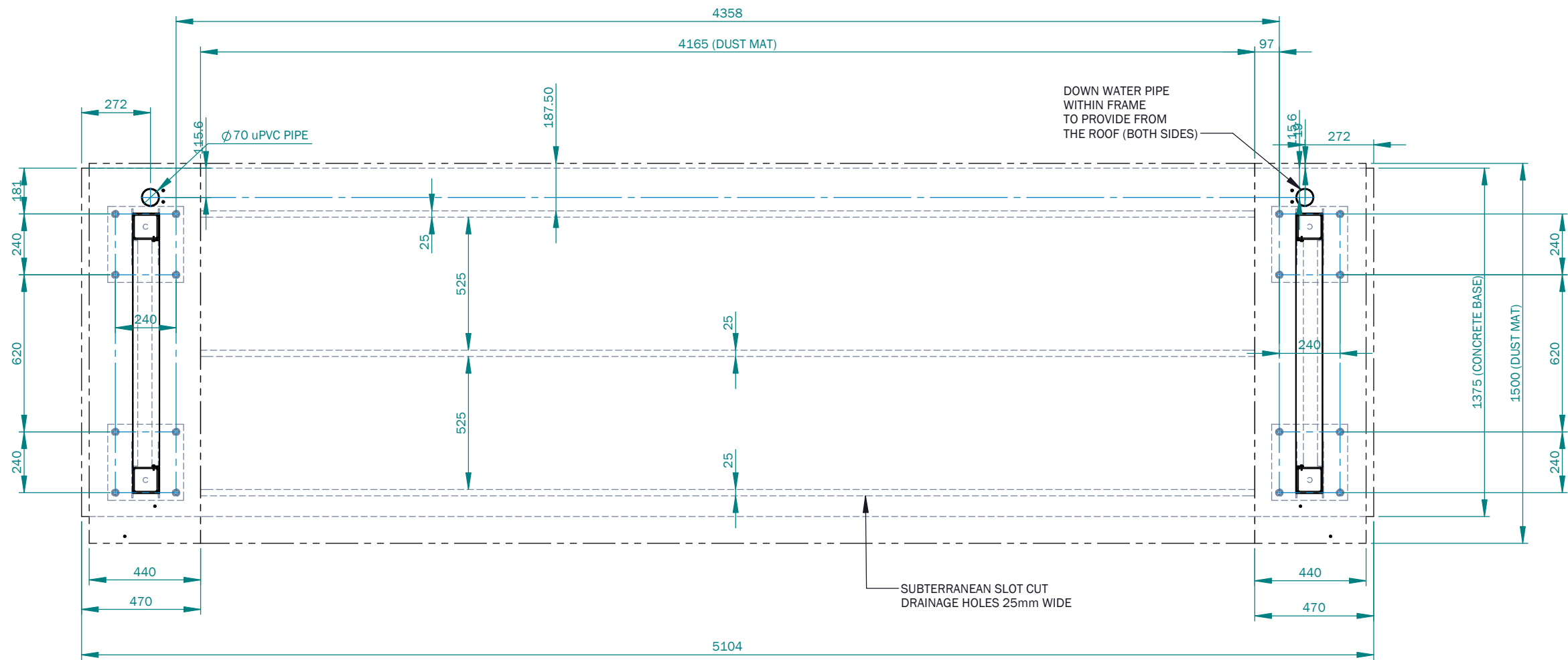
VARIANT :  
ENTRANCE PORTAL OVERALL ASSEMBLY - 4.8m  
 PAGE TITLE :  
INSTALLATION DETAILS - 1  
 DRAWING NO :  
GA-VOL-EX-EP2-1

PAGE:  
10/12

DESIGN STATUS :  
**FOR CONSTRUCTION**

BY: SCALE @ A3 :  
RC AS SHOWN

REV: C  
DATE: 05.07.21



**SECTION AG-AG**  
SCALE\_1 : 20



LINEAR DIMENSION / TOLERANCE :  
 ≤1000 / ±1.0  
 >1000 / ±2.0



© COPYRIGHT MERSON GROUP

PROJECT :  
VOLVO SINGAGE SPECIFICATION

CATEGORY :  
EXTERNAL SIGNAGE

SIGN TYPE :  
PORTAL

VARIANT :  
ENTRANCE PORTAL OVERALL ASSEMBLY - 4.8m

PAGE TITLE :  
INSTALLATION DETAILS - 2

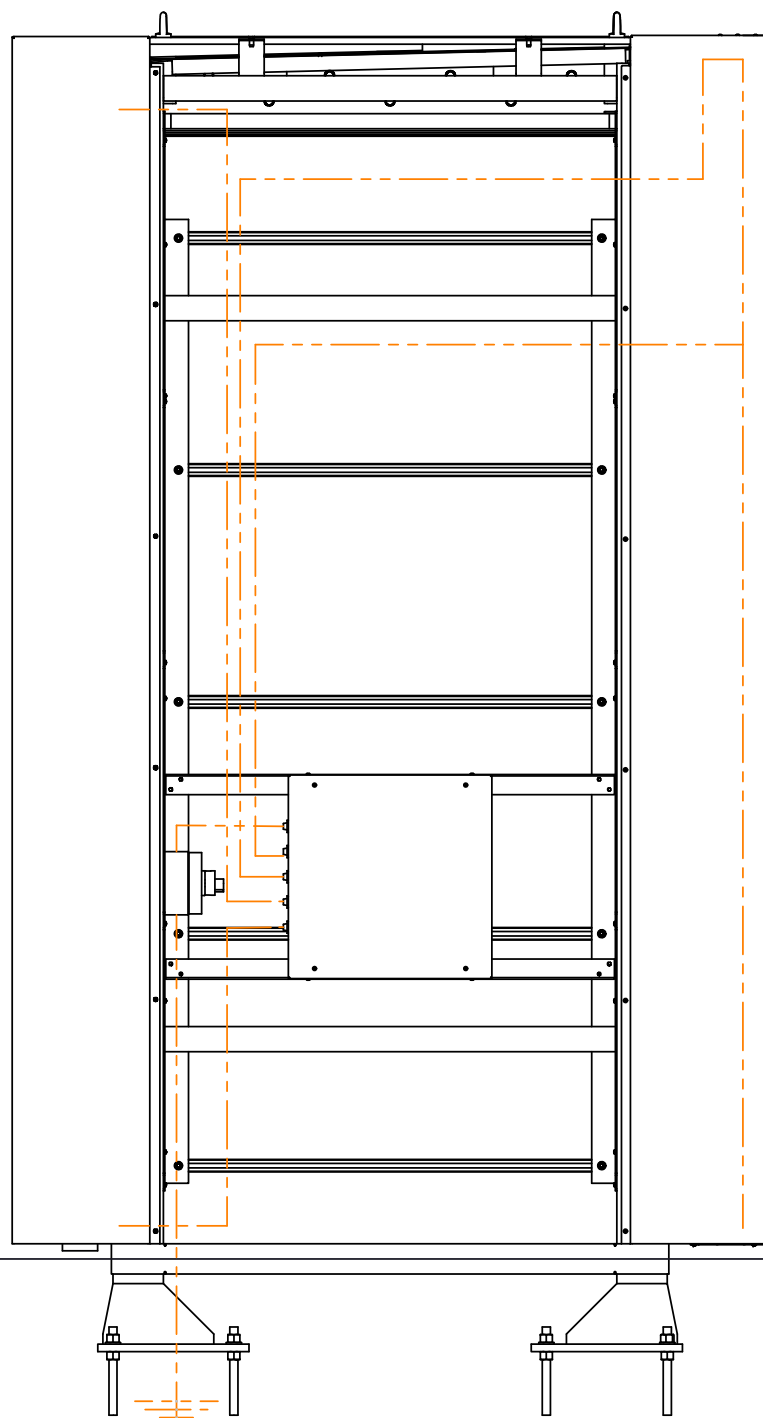
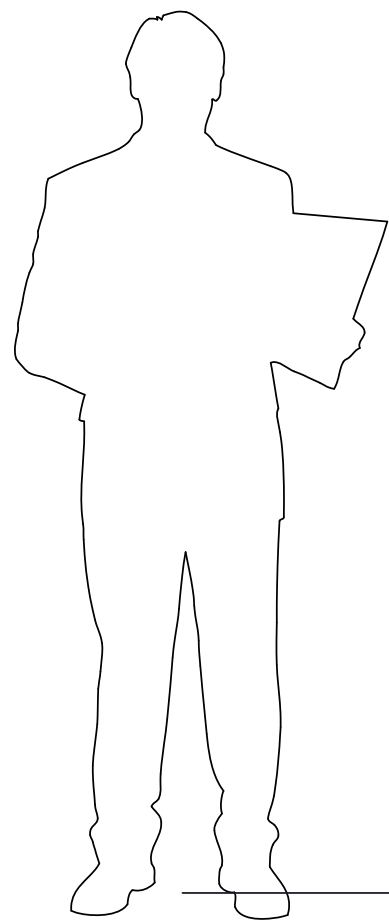
DRAWING NO :  
GA-VOL-EX-EP2-1

PAGE:  
11/12

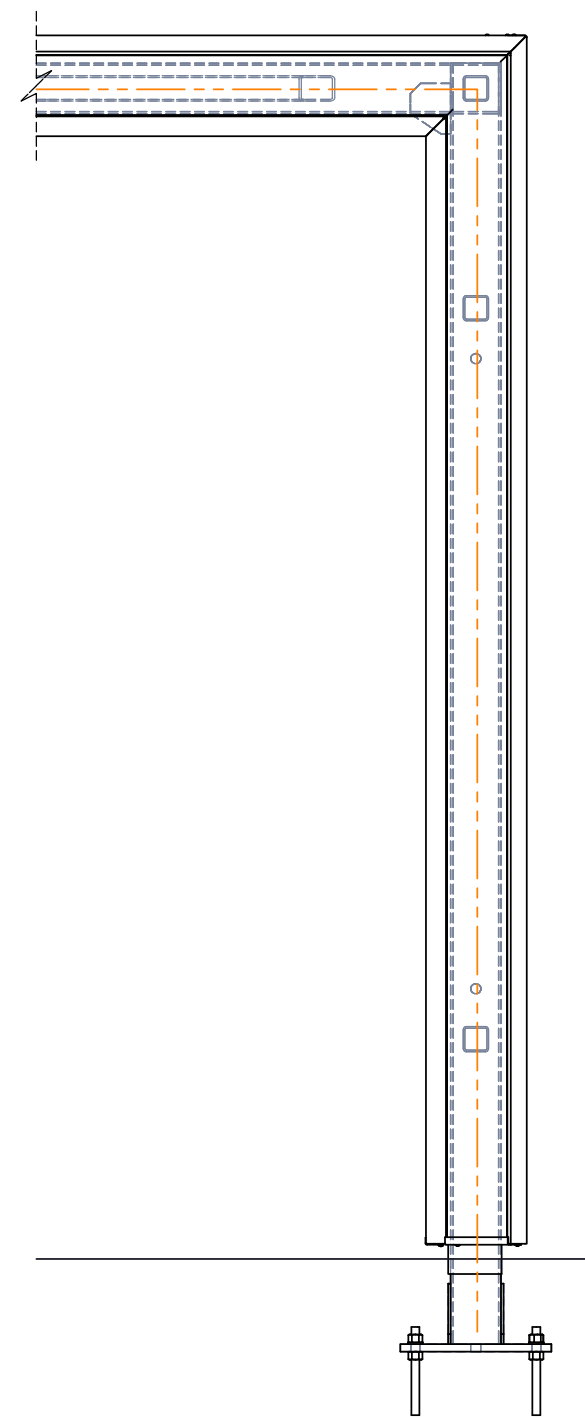
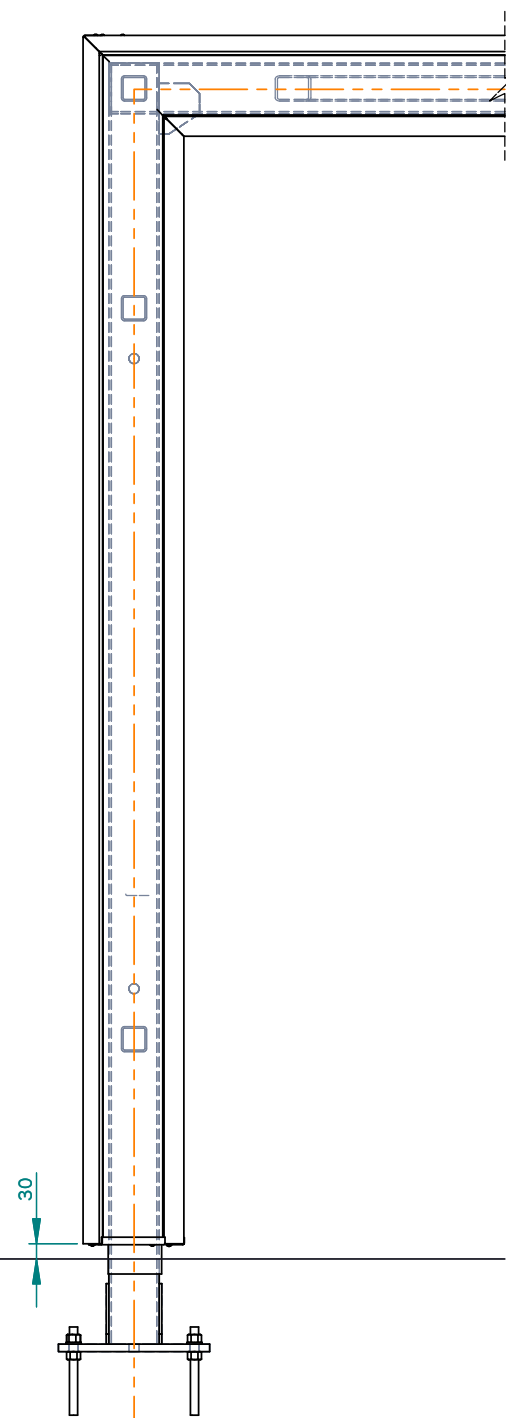
DESIGN STATUS :  
**FOR CONSTRUCTION**

BY: SCALE @ A3 :  
RC AS SHOWN

REV: C  
DATE: 05.07.21



**SIDE ELEVATION  
WITH SIDE PANEL REMOVED**  
SCALE\_1 : 15



**FRONT ELEVATION**  
SCALE\_1 : 15



LINEAR DIMENSION / TOLERANCE :  
 ≤1000 / ±1.0  
 >1000 / ±2.0



© COPYRIGHT MERSON GROUP

PROJECT :  
VOLVO SINGAGE SPECIFICATION  
 CATEGORY :  
EXTERNAL SIGNAGE  
 SIGN TYPE :  
PORTAL

VARIANT :  
ENTRANCE PORTAL OVERALL ASSEMBLY - 4.8m  
 PAGE TITLE :  
ELECTRICAL DETAIL  
 DRAWING NO :  
GA-VOL-EX-EP2-1

PAGE:  
12/12

DESIGN STATUS :  
**FOR CONSTRUCTION**

BY: SCALE @ A3 :  
RC AS SHOWN

REV: C      DATE: 05.07.21