

VRSE GREEN DESIGN PACK

01 11 2021

Workstage	Version	Date
Red Pack Issue	01	03 02 2021
Amber Pack Issue	01	28 06 2021
Green Pack Issue (VRSE)	01	01 11 2021

NOTE:

This Design Pack is for design intent purposes only. Dealer architect to carry out full site survey and to provide detailed construction drawings and specifications for final approval from VCUK prior to commencing any works.



CONTACT INFORMATION

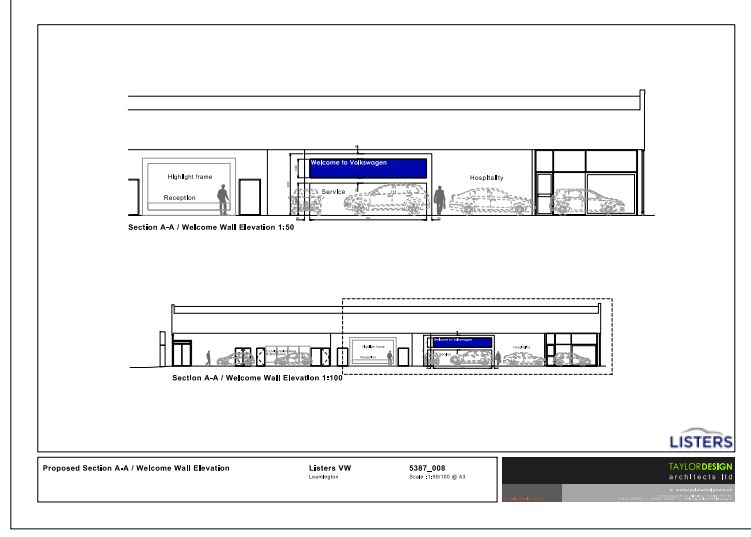
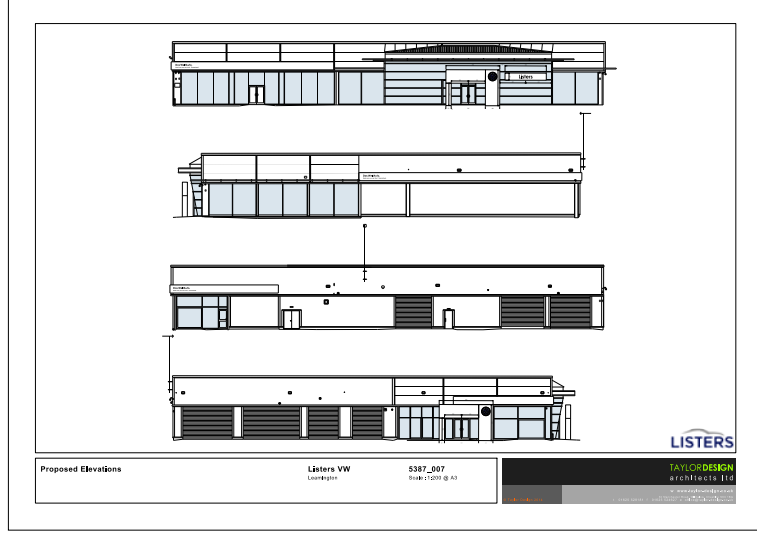
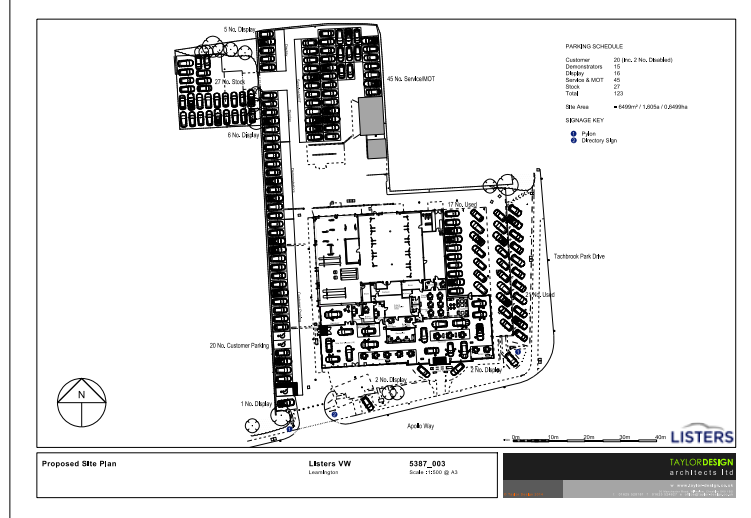
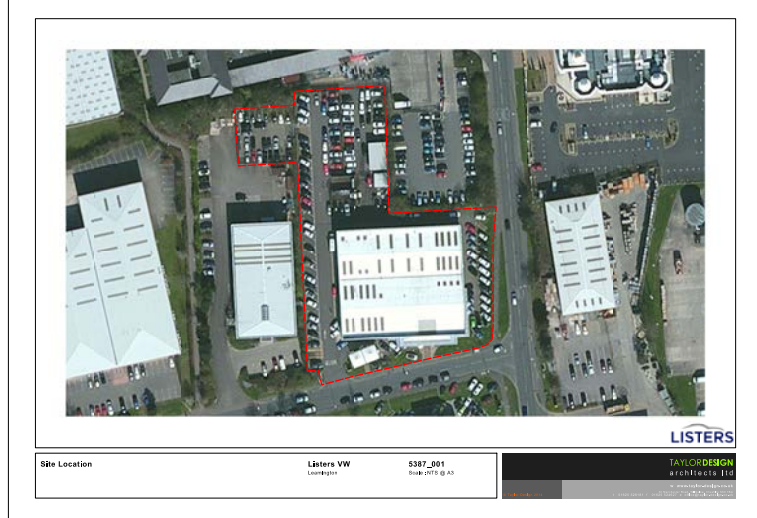
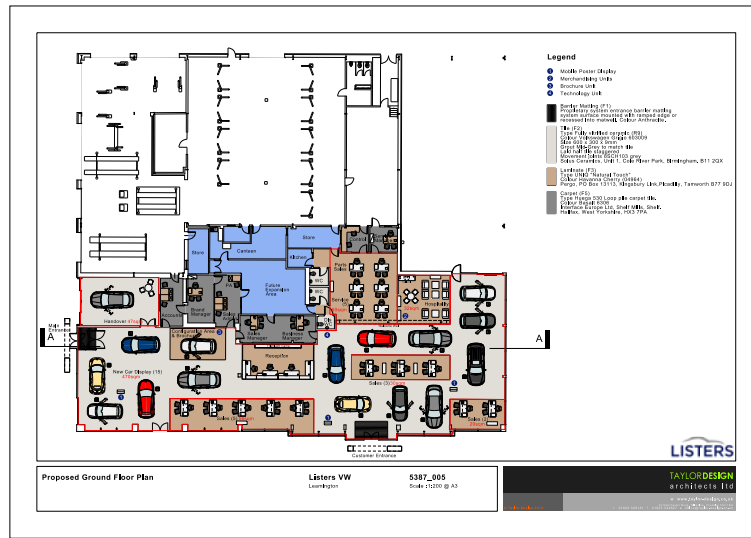
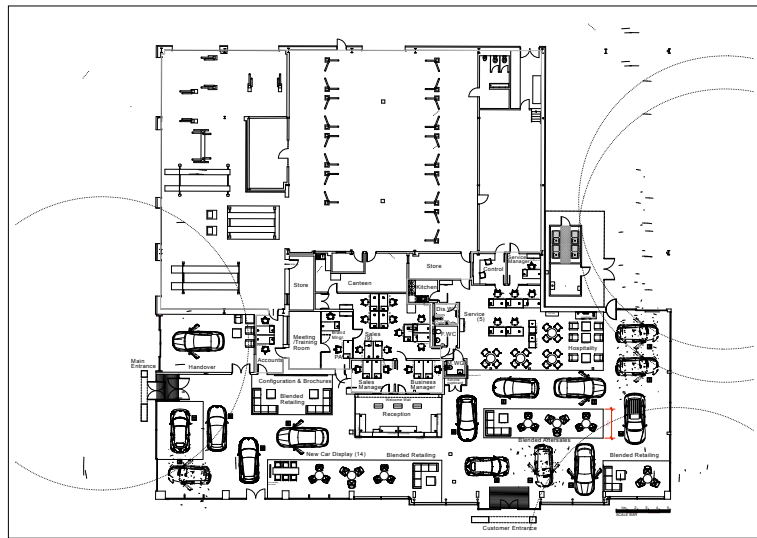
Retailer Name and Address	VOLVO	
Confidential	James Shires Director Network Development	Peter Mooney Network Property and Contracts Manager
	E: james.shires@volvocars.com	E: peter.mooney@volvocars.com
	M: +44 (0) 7810 675 905	M:
	T:	T:
Retailer Contact	David Metherell Network Development Manager	Mike Smith UK Customer Service Project Manager
David Johnson Property Director Listers Group Limited M: 07793 314 844 E: David.Johnson@listers.co.uk	E: david.metherell@volvocars.com	E: mike.smith@volvocars.com
	M: +44 (0) 7718 660 301	M: +44 (0) 7802 589 523
	T: tba	T: tba
Retailers Architect	MEDA	
TBC	Ria Dakin-Potts Director	Mike Taylor Director
	E: ria@experiencemeda.com	E: mike@experiencemeda.com
	M: +44 (0) 7770 273 445	M: +44 (0) 7768 811 198
	T: +44 (0) 1235 448 580	T: +44 (0) 1235 448 580
	James Baines Director	Annabel Johnson Retail Planning
	E: james@experiencemeda.com	E: annabel@experiencemeda.com
	M: +44 (0) 7810 850 086	T: +44 (0) 1235 448 580
	T: +44 (0) 1235 448 580	

Plans/elevations

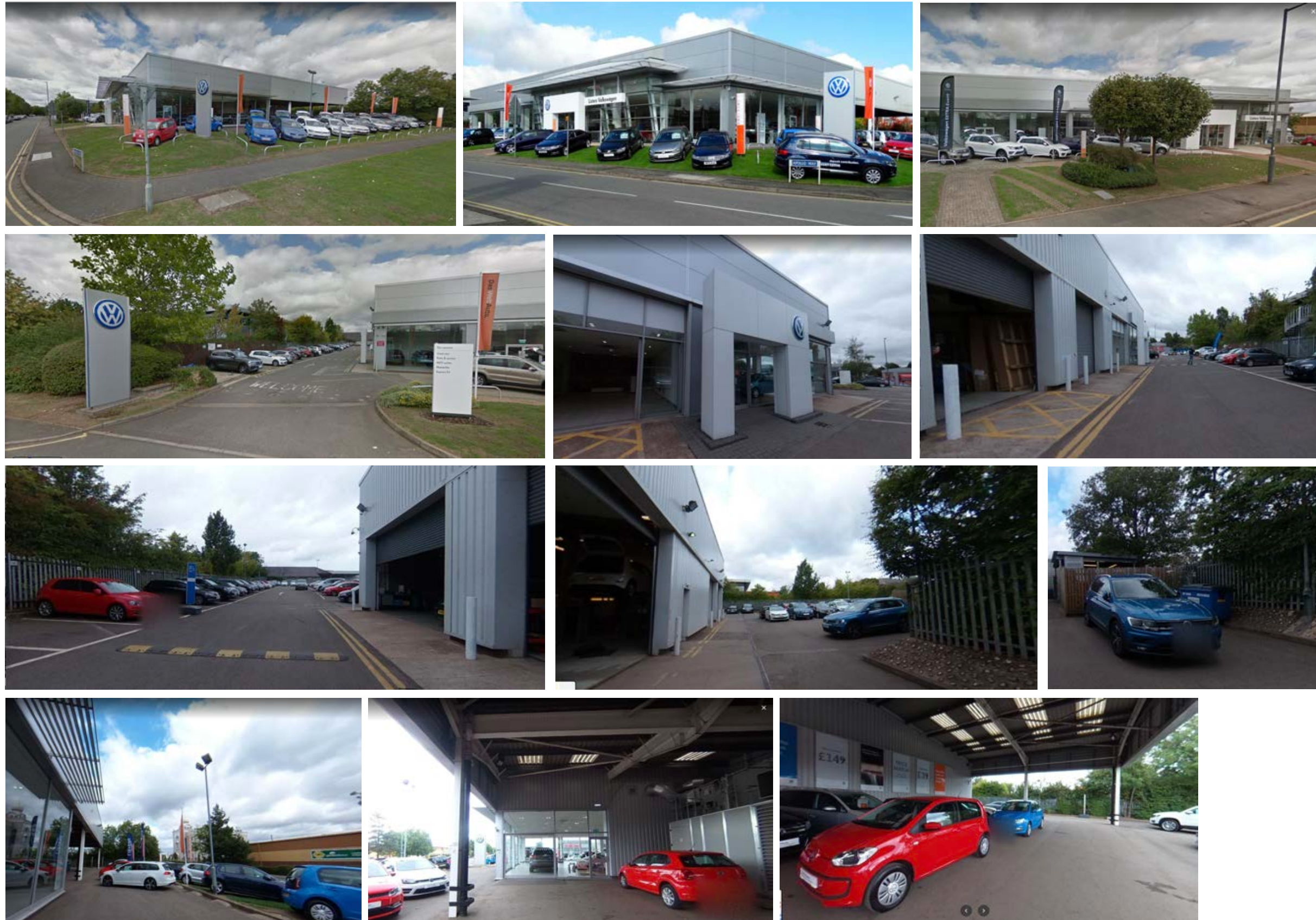
Architects Drawings

NOTE:

• The drawings within this pack were originated either from a PDF file converted to CAD or based on hardcopy prints of drawings prepared by others. To that end MEDA cannot guarantee absolute dimensional accuracy. All dimensions to be checked by the dealer's architect/project manager.



GOOGLE STREET EXTERNAL VIEWS



GOOGLE STREET INTERNAL VIEWS



Area Schedule	m2	Key
Overall Site Area	6,492m2 (1.6ac)	
Building Footprint	1,742m2	



ACCOMMODATION

Future new vehicle sales volumes (2025) as per VCUK BP are projected @ 564no units (retail plus local fleet). Any anticipated future corporate fleet volumes not provided. Selek used vehicle volumes (2025) as per VCUK BP are projected at 798no units - stock turn tbc.

Total future projected volumes as per VCUK BP therefore @ 1,362no units.

Future workshop throughput (2023) as per VCUK BP projected @ 12,000hrs.

Based on the above volumes/throughput VCUK VRSE recommendations for external accommodation is as follows:

- 16 - 18no dedicated Volvo bays for sales customers (14 - 15no standard bays, 1no disabled bay, 1/2no parent & child bays) & a further 8/9no dedicated bays for service customers.
- 13no demonstrator bays.
- 68 - 72no Selek display bays assuming a stock turn of 10 and assuming 10-15% of vehicles in prep/PDI. Note: it is intended to allocate part of the showroom to internal Selek display therefore no of external bays will reduce accordingly.
- New vehicle storage bays - maximum of 50no bays based on 10% of total projected units.
- Service vehicle storage on site - recommendation based on number of ramps (approx 4no per ramp) is a minimum of 24no bays.
- Staff parking @ approx 30no bays - tba whether on/off-site.
- Prep/PDI facilities are located on site.

VCUK VRSE recommendations for internal customer-facing accommodation is as follows:

- 1no General Reception.
- 6/7no new vehicle display positions (5/6no display vehicles plus 1no Car Delivery Bay/ designated area). Operator has requested 5no display vehicles plus 1no Car Delivery.
- 9no Sales Consultants @ 120/180 units p/p. Operator requested 3no desk-type Consultation Points in The Street supported by Sales Consultants office for 8no. In addition there will be 2no Product Specialists.
- Sales Manager's office - as per operator requirements - see below.
- Business Manager's office - as per operator requirements (office for 2no Managers for SM/BM).
- General Manager's office - as per operator requirements.
- Consultation Room (1/2no depending whether Service Manger is located in the Service Support office).
- Living Room to suit projected volumes/workshop hrs.
- Male, Female and Acc customer wc's.
- Service Manager's office (can be within own office or Support office).
- 2no Service Customer Meeting Points - operator has requested 3no desk positions.
- Workshop Support office for 3no - operator has requested office for 4no excl. Service Manager.
- 4no VPS bays in total (3,000 hrs p/b) plus 1no Workshop Support bay (750 hrs), 1no W/ A bay, 1no 2 post bay (1500hrs) plus 1no EV bay.
- Requirement for Smart Repair tbc .
- MOT bay.
- Parts Store.
- 2no wet/3no dry valet bays (as existing).

In addition the following areas need to be accommodated at mezzanine level:

- Meeting/Training Room.
- E-learning room.
- Sales Admin/Accounts/Manager's offices - operator has requested 1no office for 2no Sales Admin persons plus 1no office for 2no General Admin.
- Staff/techs canteen.
- Staff/techs wc's/facilities.
- Store, plant and comms room.



Client
VCUK

Project
Volvo Leamington
Project Xenium
Listers

Job Number
VRSE001

Description
Existing Internal Layouts

Scale
NTS

Status
GREEN
(VRSE)
Drawing number
VRSE001/XEN001

Date
01 11 2021

Drawn by
AJ

These drawings show the architectural intent only. They are not for construction and are for information only. Any details provided are to assist in that respect. The application of these drawings is to be developed by the Project Architect and their use is without prejudice to MEDA. Any details remain the intellectual property of Volvo.

CHARGING POINTS

Designated charging bays as per VCUK VRE Specification. NOTE: It is ultimately the responsibility of the retailer to ensure that the number of points & total kW/Amps meet VCUK mandated standards.

- 22kW
- 11kW

- Your Car Studio Colour and Trim display unit. For more details refer to Furniture & Accessories page and to vre.senab.com.
- Clear glazing (glazed partition between showroom/workshop to be full height fire-rated frameless). Final details/ dimensions to be proposed by dealer architect for VCUK approval.
- Service Customer Meeting Point desks - power & data as required - for details please refer to vre.senab.com.
- CO2 panel - wall mounted.
- Dotted line over The Living Room indicates change in ceiling finish to run through at same height as existing - to be oak ribbed ceiling finish. The Street is to be new white ceiling tile all as per VCUK VRE/VRSE Specification - final details to be provided by dealer architect for VCUK approval.
- Glazed partitioning to front face of all customer-facing offices/ consultation room to VCUK/VRSE specifications - final details/ dimensions to be proposed by dealer architect for VCUK approval. All solid partitions/doors to be in accordance with VCUK VRE Specification. Final details/ dimensions to be proposed by dealer architect for VCUK approval. In addition, full length curtain sheers required to all customer-facing offices/ consultation room. Details & manufacture to be in accordance with new VRE/ VRSE Guidelines. Final details/ dimensions to be proposed by dealer architect for VCUK approval.
- Wall mounted passive screen. For more details refer to Backdrop & Displays page. Note: Passive screen wall mounting detail to be confirmed by VCUK
- For reference to Living Room furniture, components & lighting, please refer to separate sheet found within this pack NOTE: Power required to pendant, floor and table lamps where indicated.
- New disabled/male/female wcs to be fitted out to VCUK VRE/ VRSE Specification - finishing details/fittings to be proposed by dealer architect for VCUK approval.
- Clean Water Station & Coffee Point. - (3000x1200mm). Water, drainage & power as required. For details please refer to vre.senab.com. Chiller unit and counter top hot drinks machine to be purchased by dealer direct. Depending on model selected hot drinks machine may also require mains water supply.
- Reception backdrop comprising vertically mounted light oak ribbed panels including 1 no opaque glass panel & Ironmark & 1 no. Lightbox with canvas graphic to front. Power as required. For more details refer to backdrop & display wall elevations and vre.senab.com. NOTE: Oak ribbed pannelled wall to take Reception backdrop is not supplied by Senab.
- Consultation Point furniture configuration with loose laid carpet 'rug'. For details please refer to vre.senab.com Meeting Area Seating Options for more information.
- Customer Entrance Portal (approx 4800mm wide X 2400mm high) with automatic sliding doors. Frame surround to be oak finish as per VCUK VRE Specification. Power required for lighting to soffit. Details & construction to be in accordance with new VRE Guidelines. Final details/ dimensions to be proposed by dealer architect for VCUK approval.

**ADDITIONAL NOTES:
FLOOR FINISHES**

- Volvo approved light grey coloured porcelain showroom tile. (750mm x 750mm)
Areas for installation: The Street
Refer to VCUK VRSE Specification for details
Supplier: Minoli Tiles
- Volvo approved ceramic wood-effect floor tile
Areas for installation: The Living Room
Refer to VCUK VRSE Specification for details
Supplier: Minoli Tiles
- Carpet - Dark Brown, Common Ground, Unity Husk 1136058
Areas for installation: Wall-to-wall in Consultation Room, Offices, (for Consultation areas see furniture configurations)
Refer to VCUK VRSE Specification for details
Supplier: Interface
- Loose laid 'Rug'
Areas for installation: Consultation Points
Refer to VCUK VRSE Specification for details
Supplier: Senab
- Door Carpet - Aluminium with black textile brush strips (second step wipe-off zone)
Areas for installation: Entrance/entrance lobby areas
Reference: Black/aluminium
Supplier: Refer to VCUK VRSE Specification for details
- Volvo approved dark warm grey coloured porcelain tile. (600mm x 600mm)
Areas for installation: Customer Toilets
Refer to VCUK VRSE Specification for details
Supplier: Minoli Tiles

WATER/ POWER REQUIREMENTS

- W Clean Water Station requires drinking water & drainage. Refer to VCUK VRSE Specification for details
- ⊕ Wall power supply
- ⊕ Wall telecom/data supply
- ⊕ Recessed floor box (power & data) - The Street
Note - Allow for a minimum of 2no sockets & 2no. data outlets to each display vehicle & its lectern.
- ⊕ Recessed floor box - The Living Room
- ⊕ Pendant light fittings - Cafe bar seating area
- ⊗ Table lamp
- ⊗ Floor-standing lamp

COMMS ELEMENTS:

- Wall mounted CO2 panel
- Wall mounted passive screen
Note: wall mounting detail tbc by VCUK

ADDITIONAL NOTES:

- These drawings indicate design intent only & should be read in conjunction with all other drawings contained within this pack - it is the responsibility of the dealer/ dealer's architect to provide construction drawings for VCUK approval prior to commencement of any works.
- Generally all internal/external finishes to be as per current VCUK VRE/ VRSE Specification.
- New lighting to be provided as required in accordance with VCUK VRE/ VRSE Specification.
- New Customer Entrance/ Shop Windows (as reqd) to be detailed/specified in accordance with VCUK VRE guidelines/specifications.
- All new ceramic floor tiles according to VCUK VRE Specification required throughout Volvo customer-facing areas.
- All new carpet to offices according to VCUK VRE Specification required throughout Volvo customer-facing areas.
- New barrier matting to be provided according to VCUK VRE Specification.
- All works associated with power/data requirements noted on this drawing are the responsibility of the dealer/dealer architect to co-ordinate. Note requirement for ethernet socket for passive screens.
- Direct purchase items by the dealer to include the following:
 - hot drinks machine
 - glass fronted chiller
 - passive screen - contact VCUK for details/supply
 - The Living Room furniture, lamps & accessories according to VCUK VRSE specifications.
 - Play equipment/furniture to Kid's Area according to VCUK VRSE specifications if required.
 - All workshop areas to be refurbished in line with VCUK VRE Guidelines/ Specification.

VRE/ VRSE DOCUMENTS:

This drawing is to be read in conjunction with the following information documents:

- VRE/ VRSE Guideline Manual
- VCUK VRE/ VRSE Specification
- VRE/ VRSE Exterior Corporate Guidelines

Guideline/specification documents are available to download via the flooring link: https://www.experiencemeda.com/VCUK_VRE_Specifications/index.html

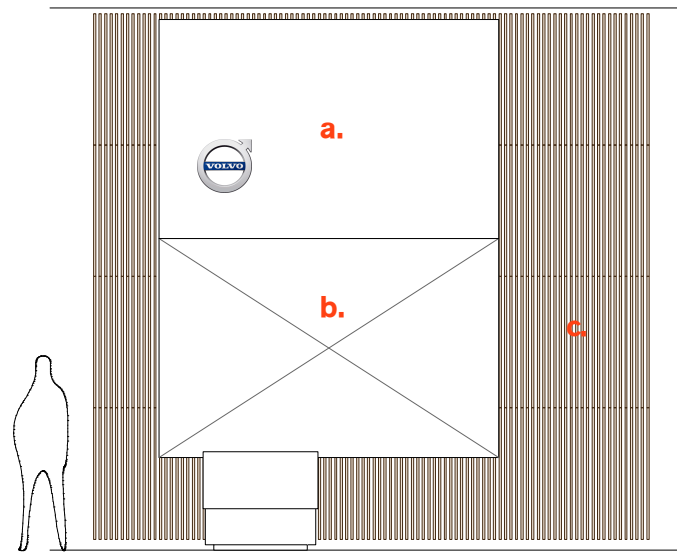
Scope of works to be completed by dealer's architect/contractor and approved by both dealer principal and VCUK prior to commencement of installation.



Client VCUK	Project Volvo Leamington Project Xenium Listers	Job Number VRSE001	Description Proposed VRSE Internal Layouts	Scale NTS	Status GREEN (VRSE) Drawing number VRSE001/XEN002	Date 01 11 2021	Drawn by AJ
----------------	--	-----------------------	---	--------------	---	--------------------	----------------

These drawings show the architectural intent only. They are not for construction and are for information only. Any details provided are to assist in that respect. The application of these drawings is to be developed by the Project Architect and their use is without prejudice to MEDA. Any details remain the intellectual property of Volvo.



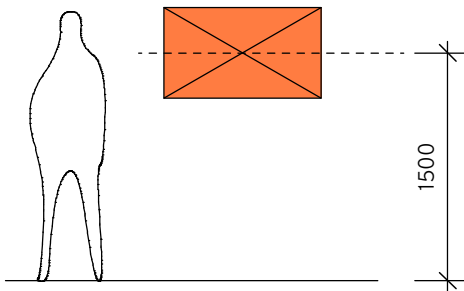


RI RECEPTION BACKDROP

INCLUDING THE FOLLOWING:-

- a. Opaque glass ID carrier EXACT SIZE TBC
- b. Lightbox with canvas print to front EXACT SIZE TBC
- c. Light oak ribbed panels vertically mounted

Note: Exact sizes of panels & extent of oak ribbed panels to be agreed.



SI THE LIVING ROOM PASSIVE SCREEN

TV Screen to be mounted directly to wall @ 1500mm FFL to centre point.

Note: Passive screen wall mounting detail to be confirmed by VCUK



ADDITIONAL NOTES:

- These drawings indicate design intent only & should be read in conjunction with all other drawings contained within this pack - it is the responsibility of the dealer/dealer's architect to provide construction drawings for VCUK approval prior to commencement of any works.
- For further information on any of the furniture/fitting please refer to vre.senab.com.
- Generally all internal/external finishes to be as per current VCUK VRE/VRSE Specification.
- Direct purchase items by the dealer to include the following:
 - hot drinks machine
 - glass fronted chiller
- Contact VCUK for details/supply of passive screens
- The Living Room furniture, lamps & accessories to be provided according to VCUK/VRE/VRSE specifications.

VRE DOCUMENTS:

This drawing is to be read in conjunction with the following information documents:

- VCUK VRE/ VRSE Specification
- VRE Guideline Manual
- VRE Interior Specification
- VRE Exterior Corporate Guidelines

Scope of works to be completed by dealer's architect/contractor and approved by both dealer principal and VCUK prior to commencement of installation.

COMMS ELEMENTS:

- Wall mounted CO2 panel
- Wall mounted passive screen

AREAS:

1.0. Showroom

- 1.1. The Street - 477m2 (39m2 p/v)
(of which 161m2 internal Selekt Used)
57% of Overall Showroom
(Vehicle Display (@ 30m2 p/v) - 210m2
(Selekt Used Vehicle Display (@ 25m2 p/v) - 125m2
70% of The Street)

1.2. The Living Room - 166m2

20% of Overall Showroom

1.3. Circulation/ Offices/ Toilets/ Stairs - 200m2

23% of Overall Showroom

Total Showroom Gross Floor Area = 843m2
(70m2 p/v)

2.0. Workshop (excl. valet if remote)

2.1. VRE Workbays/ Ramps - 310m2

2.2. Parts/ Tyres/ Plant - 133m2

2.3. Support Offices - 22m2

2.4. Amenities (if not on mezz) - 30m2

2.5. Internal Valet Bays - n/a

Total Workshop Gross Floor Area = 899m2

(of which 404m2 = retained workshop and 495m2 = VRE Volvo workshop)

3.0. Total Gross Floor Area

3.1. Building Footprint (1+2) - 1,742m2

4.0. External Valet

4.1. Wet Valet - 28m2

4.2. Dry Valet - 71m2

Total External Valet Gross Floor Area = 99m2

5.0. Site Area (net of footprint)

5.1. Paving/ Apron - 313m2

5.2. Tarmac - 3,822m2

5.3. Turf/ Landscaping etc - 516m2

Total Site Gross Area = 6,492m2 (1.6ac)

Client VCUK	Project Volvo Leamington Project Xenium Listers	Job Number VRSE001	Description Proposed VRSE Reception Backdrop & Screens	Scale NTS	Status GREEN (VRSE) Drawing number VRSE001/XEN003	Date 01 11 2021	Drawn by AJ	These drawings show the architectural intent only. They are not for construction and are for information only. Any details provided are to assist in that respect. The application of these drawings is to be developed by the Project Architect and their use is without prejudice to MEDA. Any details remain the intellectual property of Volvo.	Meda <i>Shape Make & Build</i>
----------------	--	-----------------------	--	--------------	---	--------------------	----------------	---	---

1 GENERAL CUSTOMER RECEPTION/ SERVICE CUSTOMER MEETING POINT



VRE2124 (SF305)
Reception counter small



VRE351102-61 (S29)
Work chair high Upholstered grey fabric



VRE880101-62 (AC31)
Deskpad small - Included with reception counter

2 CONSULTATION POINT (3x3m FORMAT)



VRE2184-2 (SF312)
Consultation Point desk + shelving/ storage



VRE2075 (S225)
Consultation chair Upholstered grey fabric



VRE2081 (S210)
Visitor chair Upholstered grey fabric



VRE2111 (AC201)
Recycling Bin Small



VRE2242 (L12)
Consultation lamp



By Others (shown here for info only)
Consultation carpet - Grey
NOTE: 3x3m for UK Consultation Point

3 YOUR CAR STUDIO



VRE2100 (SF002)
Colour & trims display



VRE2169 (SF314)
Samples drawer unit with 3no drawers

4 LIFESTYLE SHOP



VRE2103 (SF019)
Display unit high



VRE2188-2 (SF010)
Clothes hanger



VRE2102 (SF007)
Display unit medium full glass

5 CLEAN WATER STATION/ COFFEE POINT LARGE

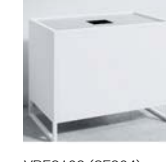


VRE2110 (SF306)
Water & coffee point large



VRE2074 (S214)
Bar chair (Upholstery - City fabric)

6 PLANTER UNIT



VRE2109 (SF304)
Planter

ADDITIONAL NOTES:

- Final specification of furniture/components must be checked to ensure that they reflect the latest layout as issued by the dealer's architect and as approved by VCUK/VCUK Brand Guardian.
- **Note 01:** All Consultation Room walls to be painted RAL 9001.
- **Note 02:** All front-of-house offices to be painted white.
- **Note 03:** Car Delivery Bay walls to be painted dark grey.
- Refer to VRSE Interior Specification
- Guideline/specification documents are available to download via the flooring link: https://www.experiencemeda.com/VCUK_VRE_Specifications/index.html
- Scope of works to be completed by dealer's architect/contractor and approved by both dealer principal and VCUK prior to commencement of installation.
- **Note 04:** Where a kids unit has not been indicated on the plan it is the dealers responsibility to provide suitable alternative to ensure that they meet current VCUK Dealer Standards.

9 MANAGERS OFFICE



Office desk
(A) TA11 - 1600mm w
(B) TA12 - 1800mm w
Fixed height (inc. cable trough)



VRE220104-11
Modesty panel to fit 1600/ 1800mm desk (on single desk position only)



VRE2024
Office chair



VRE2081 (S210)
Visitor chair Upholstered grey fabric



VRE2200 (ST206)
Storage (High - 1193x1180x416mm)



VRE880101-62 (AC31)
Deskpad small



VRE2111 (AC201)
Recycling Bin Small

10 SALES/SERVICE CUSTOMER-FACING OFFICE



Office desk
(A) TA11 - 1600mm w
(B) TA12 - 1800mm w
Fixed height (inc. cable trough)



VRE220104-11
Modesty panel to fit 1600/ 1800mm desk (on single desk position only)



VRE2024
Office chair



VRE2200 (ST206)
Storage Unit High (1193x1180x416mm)



VRE2196 (ST208)
VRE Mobile Trolley



VRE2111 (AC201)
Recycling Bin Small



VRE2199 (ST205)
Storage Unit Low (SERVICE SUPPORT OFFICE) (809x1180x416mm)

11 LOUNGE CONFIGURATION - LARGE



VRE310104-2
Leather Sofa - Dark grey fabric



VRE320106 (S38)
Easy chair Dark grey fabric



VRE2054 (TA203)
Lounge table oak - large (500mm dia x 530mm h)



VRE2055 (TA204)
Lounge table oak - small (438mm dia x 425mm h)



VRE2121 (LA205)
Lounge pendant 800mm dia



VRE2123 (LA206)
Lounge pendant 600mm dia



VRE1015 (CA109)
Luxurious lounge carpet - Sand



VRE830100-43-2 (AC101)
Magazine rack



VRE2031 (AC211)
Cushion Samba (450 x 450mm)



VRE2095 (AC212)
Cushion Manhattan x 2no (500 x 500mm)



VRE2096 (AC213)
Cushion Horizon Blue (600 x 400mm)



VRE2097 (AC214)
Quilt Plaid Horizon Green (2000 x 1300mm)

12 LOUNGE CONFIGURATION - COMPACT



VRE320106 (S38)
Easy chair Dark grey fabric



VRE2054 (TA203)
Lounge table oak - large (1500mm dia x 720mm h)



VRE510101 (L11)
Lounge floor lamp (where shown)



VRE2031 (AC211)
Cushion Samba (450 x 450mm)

13 CAR DELIVERY BAY



VRE320106 (S38)
Easy chair Dark grey fabric



VRE2079 (S219)
Ottoman Dark grey fabric - City



VRE2054 (TA203)
Lounge table oak - large (500mm dia x 530mm h)



VRE2055 (TA204)
Lounge table oak - small (438mm dia x 425mm h)



VRE2095 (AC212)
Cushion Manhattan x 2no (500 x 500mm)



VRE1014-2 (CA108)
Luxurious lounge carpet - Lichen Green



VRE2121 (LA205)
Lounge pendant 800mm dia



VRE510101 (L11)
Lounge floor lamp (where shown)



VRE1057 (CU106)
Curtain Sheers to Car Delivery Bay - dark grey

7 CONSULTATION ROOM



VRE2040 (TA201)
Consultation table 920mm dia x 720mm high



VRE2069 (S205)
Armchair, Oak legs (Upholstery - City fabric)



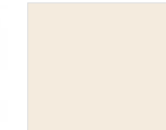
VRE2199 (ST205)
Storage Unit



VRE2021 (LA203)
Metal Pendant - Beige



VRE2111 (AC201)
Recycling Bin Small



Wall paint colour to ALL walls in Consultation Room - RAL9001

8 SCANDINAVIAN GROUP



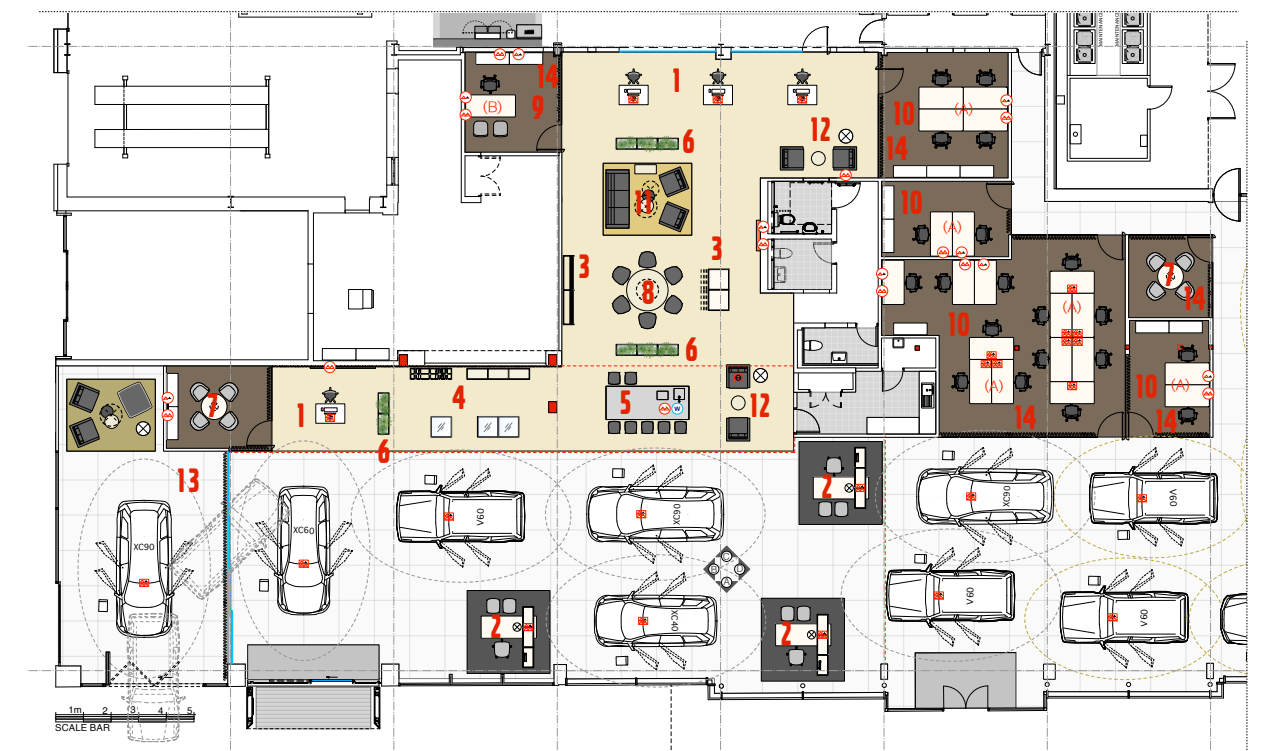
VRE210101-42 (TA15)
Wooden table oak - large (500mm dia x 530mm h)



VRE2070 (S206)
Armchair - white composite, upholstered seat pad - grey



VRE2121 (LA205)
Lounge pendant 800mm dia



Client
VCUK

Project
Volvo Leamington
Project Xenium
Listers

Job Number
VRSE001

Description
Proposed VRSE Furniture Items/
Accessories

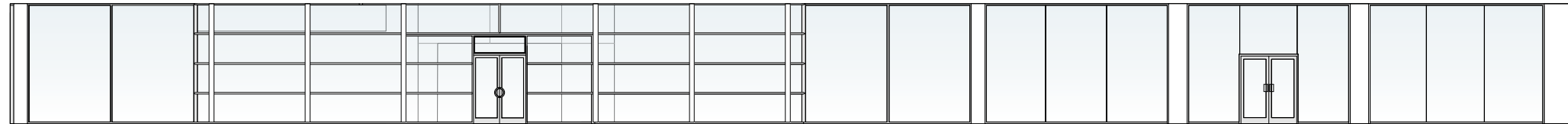
Scale
NTS

Status
GREEN
(VRSE)
Date
01 11 2021
Drawing number
VRSE001/XEN004

Drawn by
AJ

These drawings show the architectural intent only. They are not for construction and are for information only. Any details provided are to assist in that respect. The application of these drawings is to be developed by the Project Architect and their use is without prejudice to MEDA. Any details remain the intellectual property of Volvo.

ADDITIONAL NOTES:



ELEVATION A



ELEVATION B



ELEVATION C



ELEVATION D

Client
VCUK

Project
Volvo Leamington
Project Xenium
Listers

Job Number
VRSE001

Description
Existing Internal Elevations

Scale
NTS

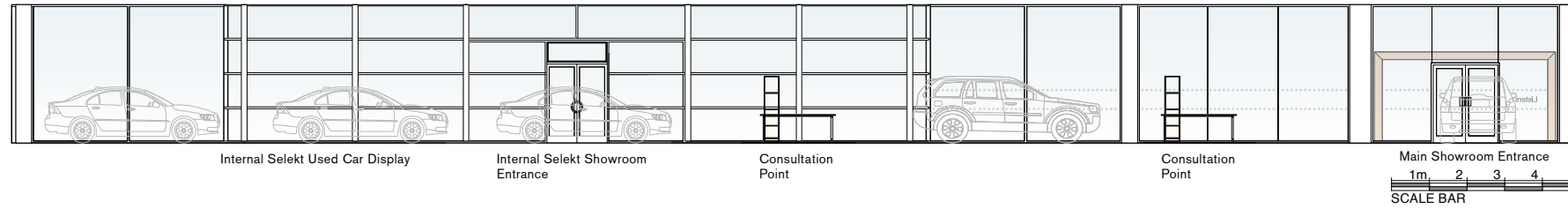
Status
GREEN
(VRSE)

Date
01 11 2021

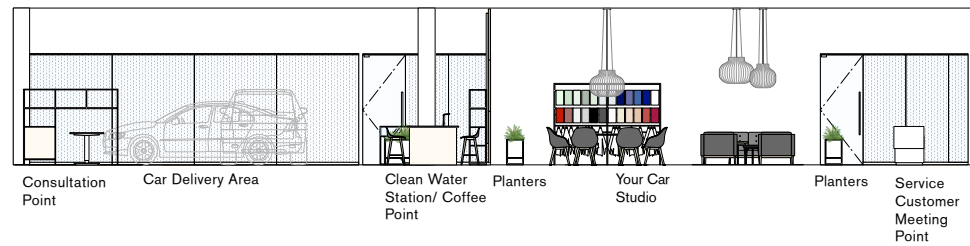
Drawn by
AJ

Drawing number
VRSE001/XEN005

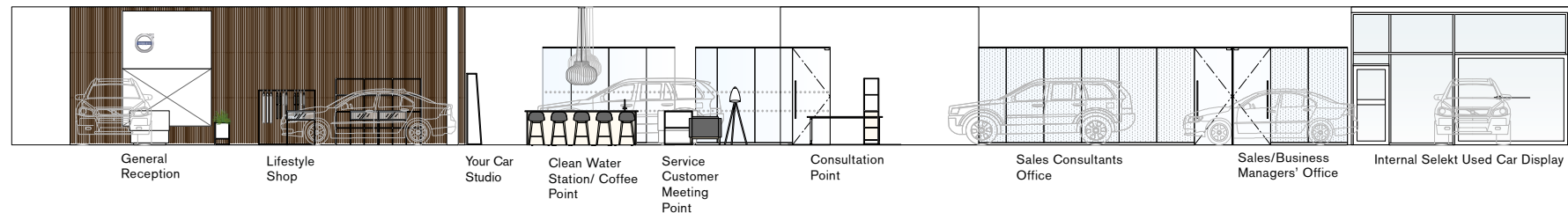
These drawings show the architectural intent only. They are not for construction and are for information only. Any details provided are to assist in that respect. The application of these drawings is to be developed by the Project Architect and their use is without prejudice to MEDA. Any details remain the intellectual property of Volvo.



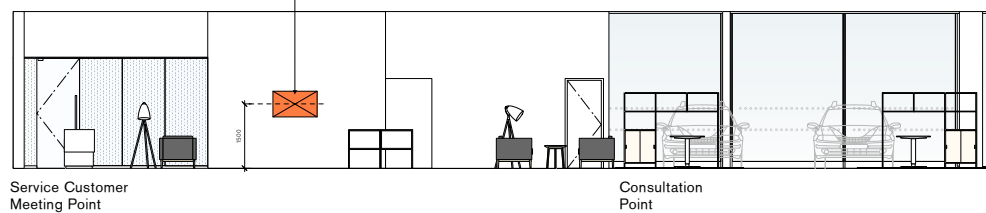
ELEVATION A



ELEVATION B



ELEVATION C



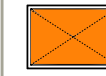
ELEVATION D

ADDITIONAL NOTES:

WALL GRAPHICS



Wall-mounted CO2 panel



Wall-mounted passive screen

ADDITIONAL NOTES:

- These drawings indicate design intent only & should be read in conjunction with all other drawings contained within this pack - it is the responsibility of the dealer/dealer's architect to provide construction drawings for VCUK approval prior to commencement of any works.
- Generally all internal/external finishes to be as per current VCUK VRE/VRSE Specification.
- Final content and dimensions of wall graphic panels tbc by VCUK.
- All dimensions are indicative of design intent - dealer architect/contractors/suppliers are responsible for checking site dimensions/conditions and advise of any issues with proposed locations of components/graphic items and/or installation of at project commencement.
- All works associated with power/data requirements noted on this drawing are the responsibility of the dealer/dealer architect to co-ordinate. Note requirement for ethernet socket for passive screen.

VRE/ VRSE DOCUMENTS:

This drawing is to be read in conjunction with the following information documents:

- VRE/ VRSE Guideline Manual
- VRE Workshop Layout Guideline
- VRE/ VRSE Interior Specification
- VRE Exterior Corporate Guidelines

Guideline/specification documents are available to download via the flooring link: https://www.experiencemeda.com/VCUK_VRE_Specifications/index.html
 Scope of works to be completed by dealer's architect/contractor and approved by both dealer principal and VCUK prior to commencement of installation.

Client VCUK	Project Volvo Leamington Project Xenium Listers	Job Number VRSE001	Description Proposed VRSE Internal Elevations	Scale NTS	Status GREEN (VRSE) Drawing number VRSE001/XEN006	Date 01 11 2021	Drawn by AJ	These drawings show the architectural intent only. They are not for construction and are for information only. Any details provided are to assist in that respect. The application of these drawings is to be developed by the Project Architect and their use is without prejudice to MEDA. Any details remain the intellectual property of Volvo.
----------------	--	-----------------------	--	--------------	---	--------------------	----------------	---

ADDITIONAL NOTES:



Client
VCUK

Project
Volvo Leamington
Project Xenium
Listers

Job Number
VRSE001

Description
Existing Site Layout

Scale
NTS

Status
GREEN
(VRSE)
Drawing number
VRSE001/XEN007

Date
01 11 2021

Drawn by
AJ

These drawings show the architectural intent only. They are not for construction and are for information only. Any details provided are to assist in that respect. The application of these drawings is to be developed by the Project Architect and their use is without prejudice to MEDA. Any details remain the intellectual property of Volvo.

Site Area - 6,492m² (1.6ac)



CHARGING POINTS

Designated charging bays as per VCUK VRE Specification. NOTE: It is ultimately the responsibility of the retailer to ensure that the number of points & total kW/Amps meet VCUK mandated standards.

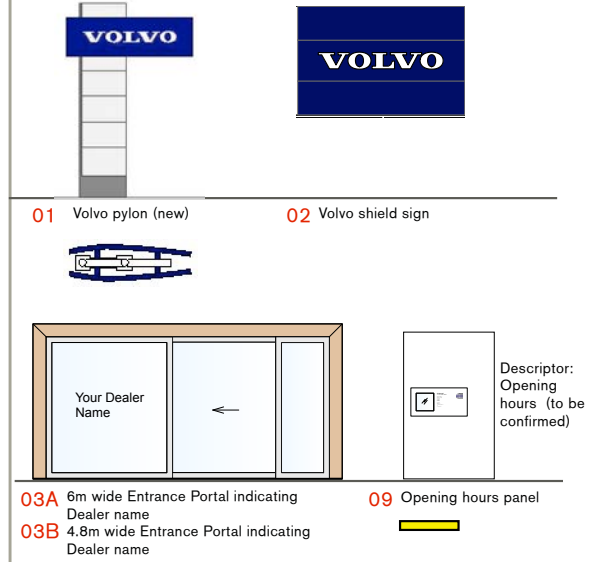
- 22kW
- 11kW
- 13AMP
- 150KW DC FAST CHARGER

FLOOR FINISHES KEY

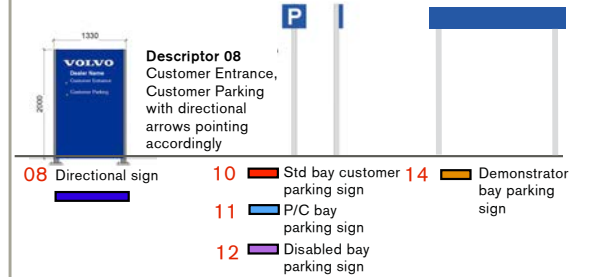
- F1** Light Grey pavioured plaza area & customer parking as per VCUK VRE Specification. Graphic markings applied in white asphalt paint/ white block pavours as necessary. In some instances existing pavours may be retained, again subject to agreement with VCUK.
- F2** Dark Grey pavioured areas to Selekt Vehicle display and apron to building as per VCUK VRE Specification. On refurbished sites it is possible to substitute with black asphalt & white band subject to agreement with VCUK. In some instances existing pavours may be retained, again subject to agreement with VCUK.
- F3** Black Asphalt with graphic markings applied in white asphalt paint using Volvo Broad font. In some instances existing pavours may be retained, again subject to agreement with VCUK.
- F4** Pebble beds with lights - Marshalls Atlantic Pebbles 30-50mm.
- F5** Planting - low hardy grasses - birch trees if applicable.
- F6** Vehicle display podium to be light concrete cast in-situ with a brushed finish (recommended but not mandated on this site)

ADDITIONAL NOTES:

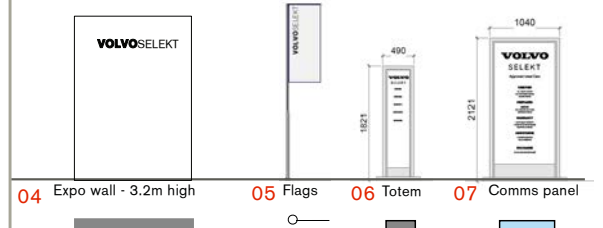
PRIMARY SIGNING COMPONENTS



SECONDARY SIGNING COMPONENTS



SELEKT SIGNING COMPONENTS



CHARGING POINTS

Designated charging bays as per VCUK VRE Specification. NOTE: It is ultimately the responsibility of the retailer to ensure that the number of points & total kW/Amps meet VCUK mandated standards.

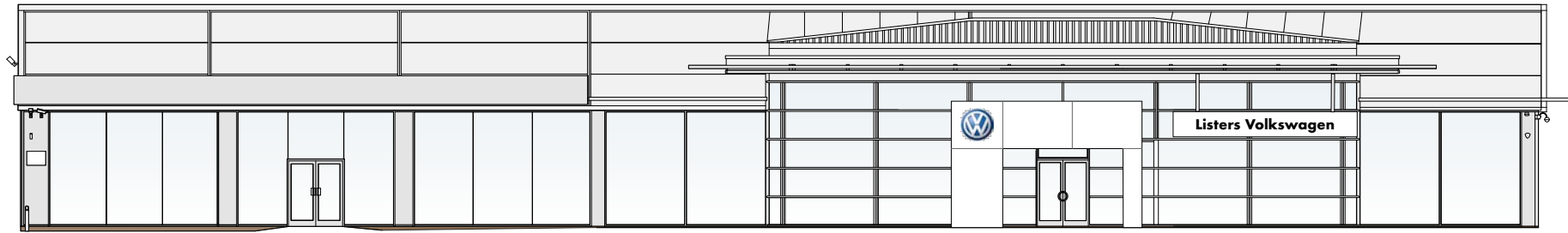
- 11kW
- 22kW
- 13Amp

VRE/ VRSE DOCUMENTS:

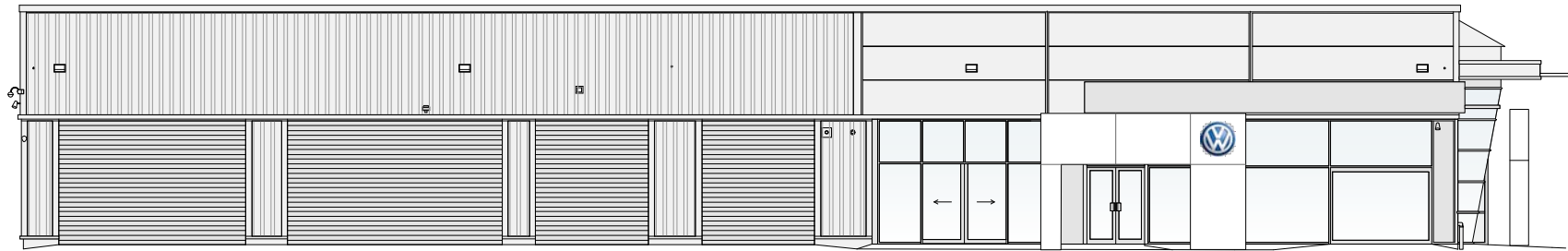
This drawing is to be read in conjunction with the following information documents:
 • VRE/ VRSE Guideline Manual
 • VRE Workshop Layout Guideline
 • VRE/ VRSE Interior Specification
 • VRE Exterior Corporate Guidelines
 Guideline/specification documents are available to download via the flooring link: https://www.experiencemeda.com/VCUK_VRE_Specifications/index.html
 Scope of works to be completed by dealer's architect/contractor and approved by both dealer principal and VCUK prior to commencement of installation.

Client VCUK	Project Volvo Leamington Project Xenium Listers	Job Number VRSE001	Description Proposed VRSE Site Layout - Signage & External Floor Finishes	Scale NTS	Status GREEN (VRSE) Drawing number VRSE001/XEN008	Date 01 11 2021	Drawn by AJ	These drawings show the architectural intent only. They are not for construction and are for information only. Any details provided are to assist in that respect. The application of these drawings is to be developed by the Project Architect and their use is without prejudice to MEDA. Any details remain the intellectual property of Volvo.
----------------	--	-----------------------	---	--------------	---	--------------------	----------------	---

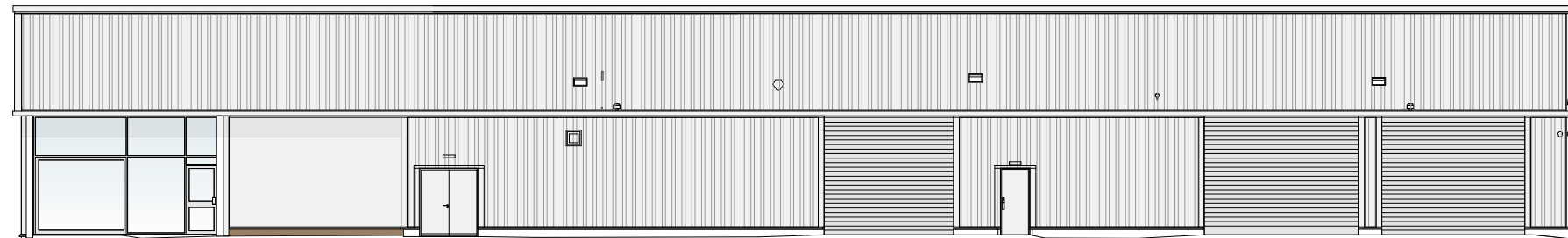
ADDITIONAL NOTES:



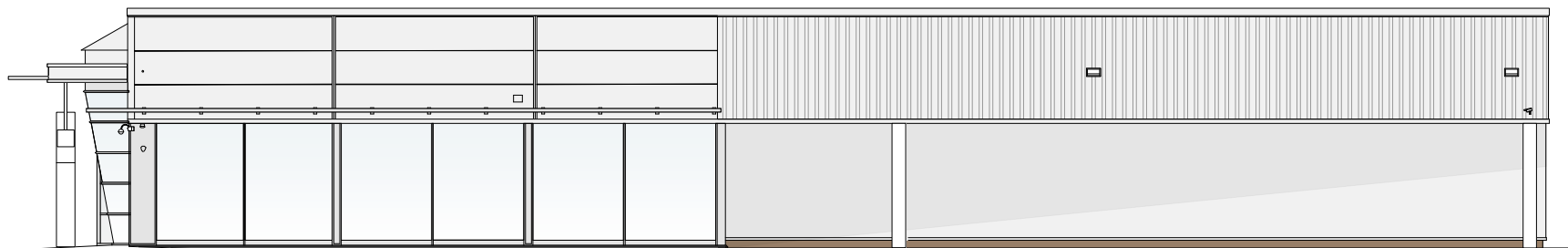
SOUTH ELEVATION (MAIN CUSTOMER ENTRANCE)



WEST ELEVATION (CUSTOMER ENTRANCE)



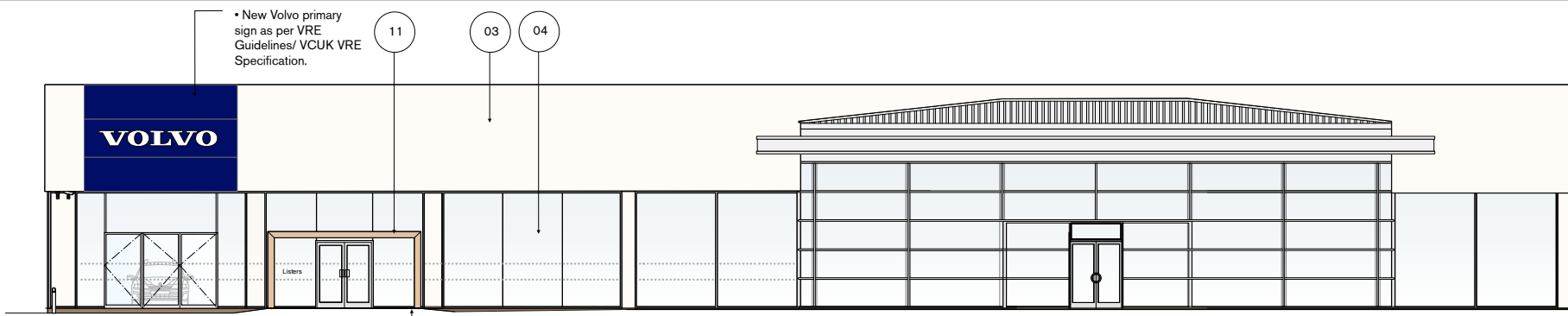
NORTH ELEVATION



EAST ELEVATION

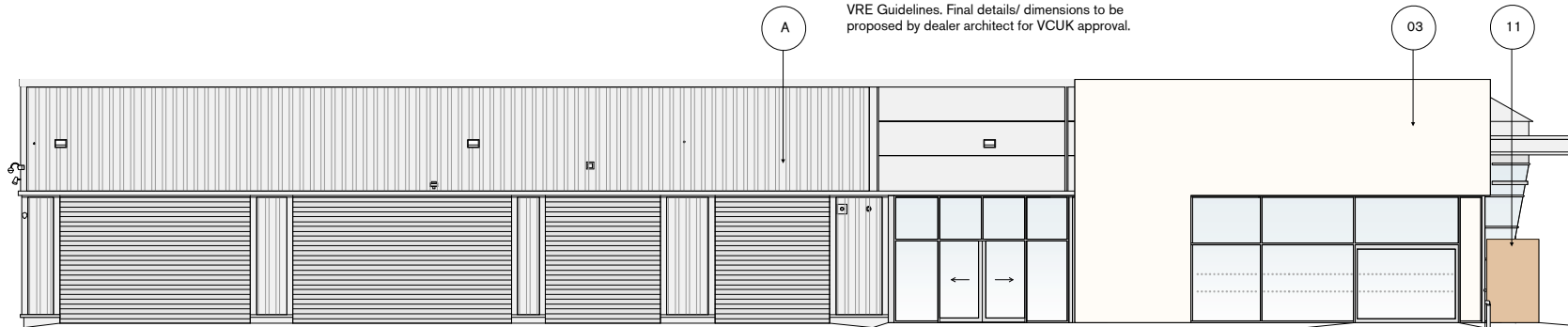
Client VCUK	Project Volvo Leamington Project Xenium Listers	Job Number VRSE001	Description Existing External Elevations	Scale NTS	Status GREEN (VRSE) Drawing number VRSE001/XEN009	Date 01 11 2021	Drawn by AJ
----------------	--	-----------------------	---	--------------	---	--------------------	----------------

These drawings show the architectural intent only. They are not for construction and are for information only. Any details provided are to assist in that respect. The application of these drawings is to be developed by the Project Architect and their use is without prejudice to MEDA. Any details remain the intellectual property of Volvo.

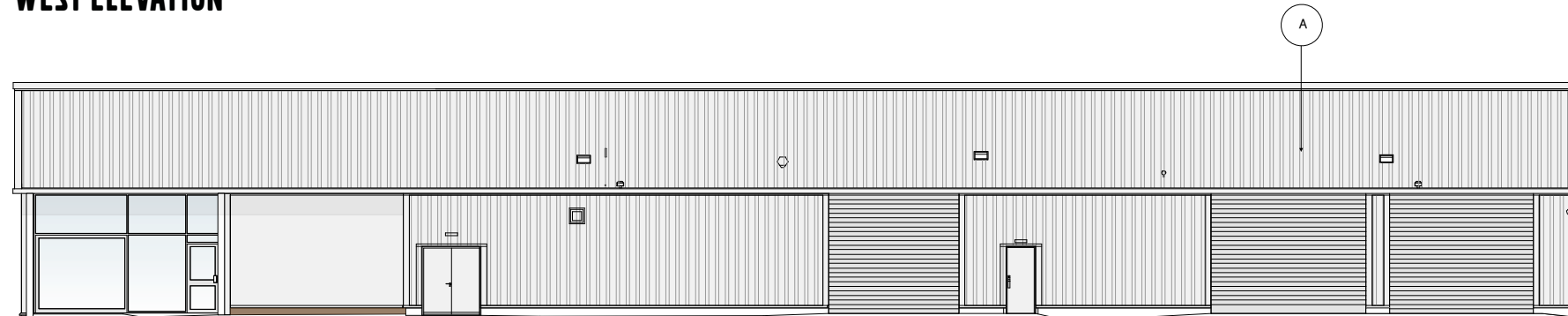


SOUTH ELEVATION (MAIN CUSTOMER ENTRANCE)

• Customer Entrance Portal (4800x2400mm) with automatic sliding doors. Oak finish to frame surround. Power required for lighting to soffit. Details & construction to be in accordance with new VRE Guidelines. Final details/ dimensions to be proposed by dealer architect for VCUK approval.

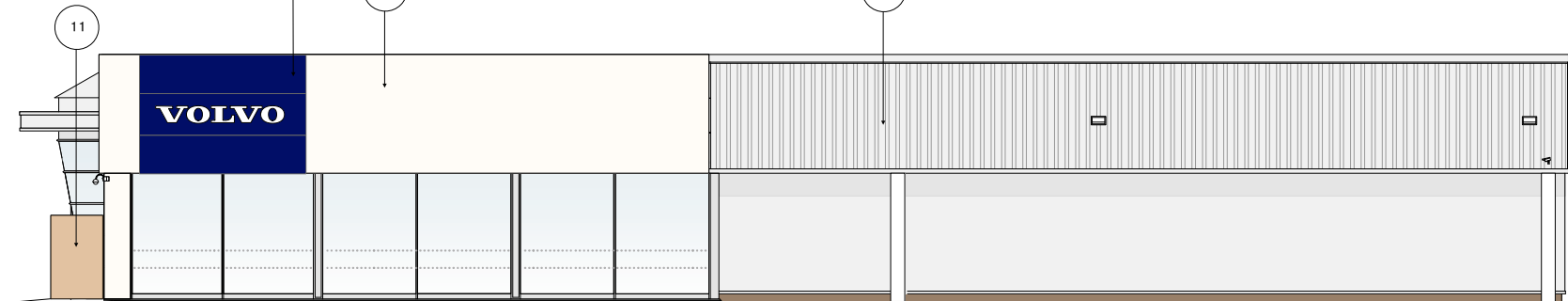


WEST ELEVATION



NORTH ELEVATION

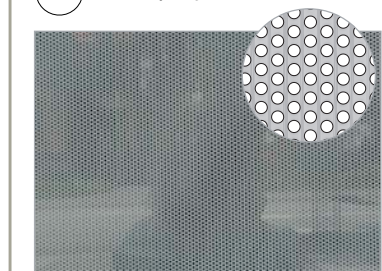
• New Volvo primary sign as per VRE Guidelines/ VCUK VRE Specification.



EAST ELEVATION

ADDITIONAL NOTES:

01 Printed vinyl on glass



03 Parex render (refer to VCUK VRE Specification)



04 Clear glass



13 Composite Panels (refer to VCUK VRE Specification)



11 Oak finish to all visible faces.

VRE/ VRSE DOCUMENTS:

This drawing is to be read in conjunction with the following information documents:
 • VRE/ VRSE Guideline Manual
 • VRE Workshop Layout Guideline
 • VRE/ VRSE Interior Specification
 • VRE Exterior Corporate Guidelines
 Guideline/specification documents are available to download via the flooring link: https://www.experiencemeda.com/VCUK_VRE_Specifications/index.html
 Scope of works to be completed by dealer's architect/contractor and approved by both dealer principal and VCUK prior to commencement of installation.

Client VCUK	Project Volvo Leamington Project Xenium Listers	Job Number VRSE001	Description Proposed VRSE External Elevations	Scale NTS	Status GREEN (VRSE) Drawing number VRSE001/XEN010	Date 01 11 2021	Drawn by AJ	These drawings show the architectural intent only. They are not for construction and are for information only. Any details provided are to assist in that respect. The application of these drawings is to be developed by the Project Architect and their use is without prejudice to MEDA. Any details remain the intellectual property of Volvo.
----------------	--	-----------------------	--	--------------	---	--------------------	----------------	---



CHARGING POINTS

Designated charging bays as per VCUK VRE Specification.
NOTE: It is ultimately the responsibility of the retailer to ensure that the number of points & total kW/Amps meet VCUK mandated standards.

● 22kW



ADDITIONAL NOTES:

- Workshop lighting to achieve a level of 1000 lux @ 1000mm FFL.
- These drawings indicate design intent only & should be read in conjunction with all other drawings contained within this pack - it is the responsibility of the dealer/dealer's architect to provide construction drawings for VCUK approval prior to commencement of any works.

WORKSHOP FLOOR FINISHES AS FOLLOWS UNLESS AGREED OTHERWISE WITH VCUK:

- 01 Volvo approved 200 x 200mm white porcelain bay demarcation floor tile with skirtings to match. Refer to VRSE specification document for details.
- 02 Volvo approved 200 x 200mm grey porcelain workshop floor tile with skirtings to match. Refer to VRSE specification document for details.

WORKSHOP WALL FINISHES AS FOLLOWS UNLESS AGREED OTHERWISE WITH VCUK:

- 03 Volvo approved 200 x 200mm grey glazed ceramic wall tiles. Refer to VRSE specification document for details.
- 04 White paint to all remaining wall/ceiling areas. Refer to VRSE specification document for details.
- 05 Dark grey paint finish to solid internal doors within workshop areas. Refer to VRSE specification document for details.
- 06 Clear glazing (glazed partition between showroom/workshop to be full height fire-rated frameless)
- 07 Roller shutter doors - colour to match adjacent external finish. Refer to VRSE specification document for details or to match extg roller shutter doors.

VRE/ VRSE DOCUMENTS:

This drawing is to be read in conjunction with the following information documents:
 • VRE/ VRSE Guideline Manual
 • VRE Workshop Layout Guideline
 • VRE/ VRSE Interior Specification
 • VRE Exterior Corporate Guidelines
 Guideline/specification documents are available to download via the flooring link: https://www.experiencemeda.com/VCUK_VRE_Specifications/index.html
 Scope of works to be completed by dealer's architect/contractor and approved by both dealer principal and VCUK prior to commencement of installation.

Client VCUK	Project Volvo Leamington Project Xenium Listers	Job Number VRSE001	Description Proposed Workshop Area/ VPS Bays	Scale NTS	Status GREEN (VRSE) Drawing number VRSE001/XEN011	Date 01 11 2021	Drawn by AJ	These drawings show the architectural intent only. They are not for construction and are for information only. Any details provided are to assist in that respect. The application of these drawings is to be developed by the Project Architect and their use is without prejudice to MEDA. Any details remain the intellectual property of Volvo.	Meda <i>Shape Make & Build</i>
----------------	--	-----------------------	--	--------------	---	--------------------	----------------	---	---

VRSE **GREEN** DESIGN PACK

01 11 2021

VOLVO LEAMINGTON (PROJECT XENIUM)
LISTERS

Meda *Shape
Make
&Build*

