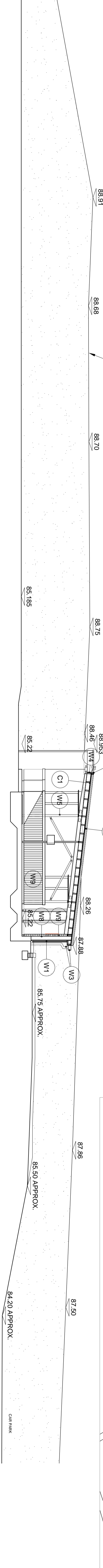


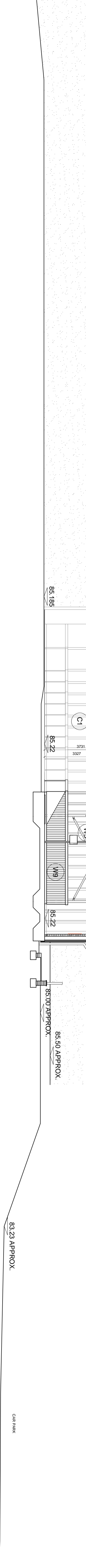
MATERIALS KEY

- W1 MATT BLACK STAINED SHIPLAP TIMBER BOARDING
- W2 RED/ORANGE BRICKWORK (AS EXISTING GOLF CLUB)
- W3 ALUMINIUM RAINWATER GOODS MATT BLACK
- W4 DECORATED PLY EAVES AND SOFFIT BOARDING RAL 7022 UMBRA GREY
- W5 POLYESTER POWDER COATED STEELWORK RAL 7022 UMBRA GREY
- W6 OAK TIMBER PLANK CLADDING
- W7 ROCK FILLED STAINLESS STEEL GABIONS
- W8 VISUAL QUALITY MID GREY BLOCKWORK
- W9 SATINWOOD DECORATED T&G BOARDING AND CAPTINGS RAL 7030 STONE GREY
- W10 GALVANISED STEEL GUARDING (WITH MESH INFILL)
- W11 POLYESTER POWDER COATED ALUMINIUM WINDOWS & DOORS RAL 6003 OLIVE GREEN
- W12 ALUMINIUM FLASHINGS RAL 7022 UMBRA GREY
- R1 PROFILED METAL ROOF CLADDING RAL 6003 OLIVE GREEN
- C1 DECORATED TIMBER RAFTERS AND T&G BOARDED SOFFIT RAL 7030 STONE GREY
- F1 EXTERNAL QUALITY CARPET
- F2 VISUAL QUALITY CONCRETE FLOOR AND UPSTANDS
- F3 TEE CARPET

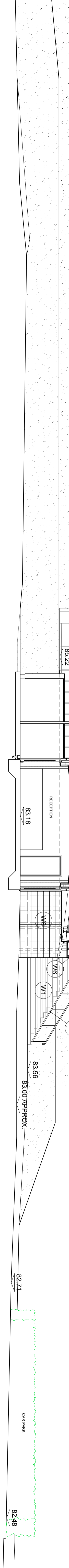
4 SECTION DD THROUGH UPPER LEVEL BAYS  
1:1 SCALE 1:100



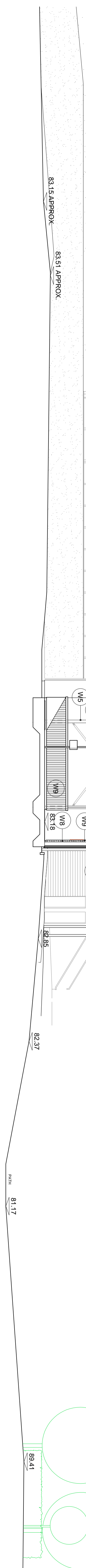
3 SECTION CC THROUGH UPPER LEVEL BAYS  
1:1 SCALE 1:100



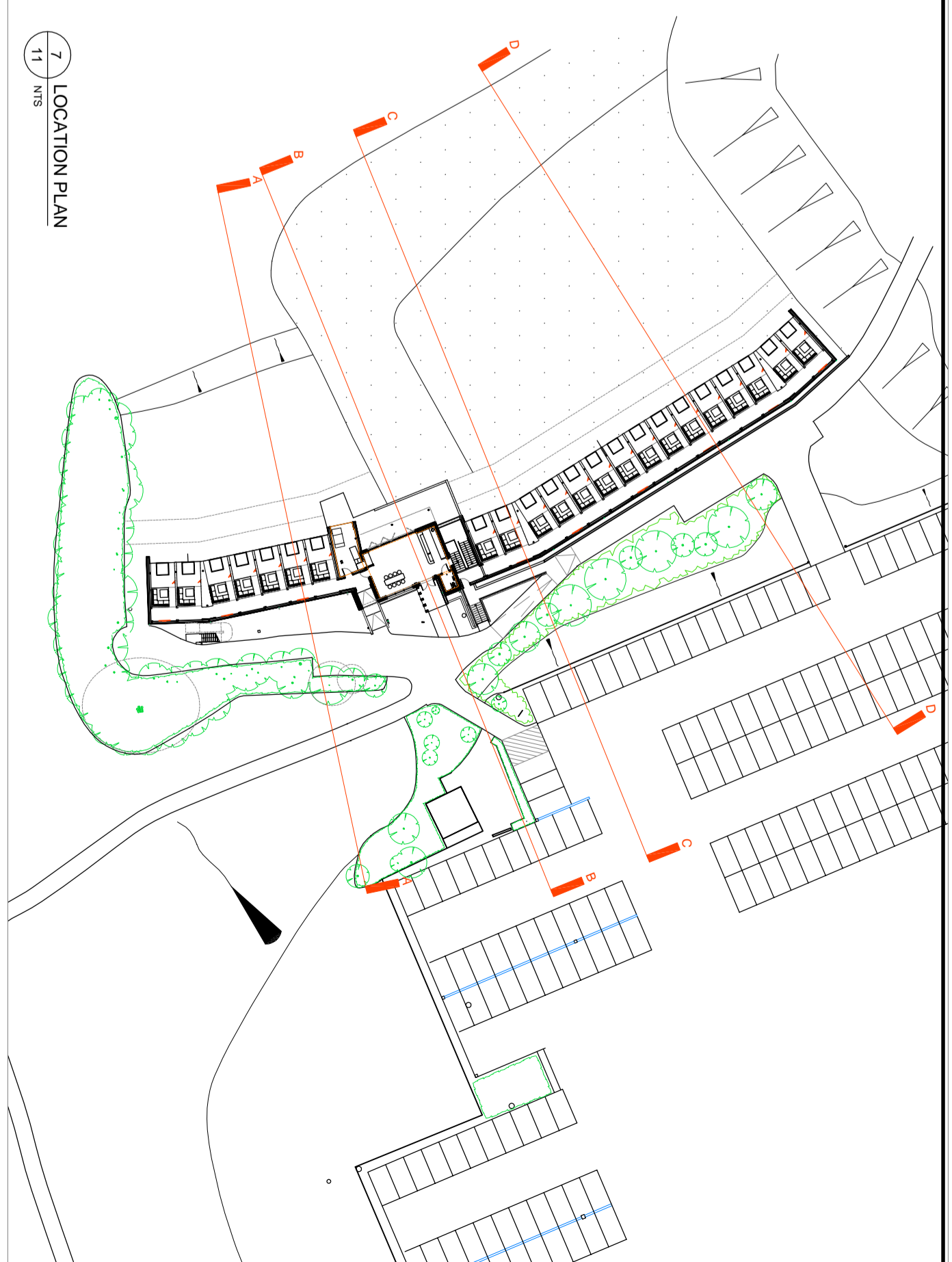
2 SECTION BB THROUGH RECEPTION  
1:1 SCALE 1:100



1 TYPICAL BAY SECTION AA  
1:1 SCALE 1:100



7 LOCATION PLAN  
1:11 SCALE 1:100



**COPYRIGHT** © THIS DRAWING IS THE PROPERTY OF SPARCSTUDIO LTD AND MAY NOT BE REPRODUCED WITHOUT WRITTEN CONSENT.  
**SITE PRIOR TO CONSTRUCTION** - SPARCSTUDIO TO BE INFORMED IMMEDIATELY OF ANY DISCREPANCIES PRIOR TO WORK PROCEEDING.  
**THESE DRAWINGS** - SPARCSTUDIO TO BE INFORMED IMMEDIATELY OF ANY DISCREPANCIES PRIOR TO WORK PROCEEDING.  
**THESE DRAWINGS** - SPARCSTUDIO TO BE INFORMED IMMEDIATELY OF ANY DISCREPANCIES PRIOR TO WORK PROCEEDING.  
**THESE DRAWINGS** - SPARCSTUDIO TO BE INFORMED IMMEDIATELY OF ANY DISCREPANCIES PRIOR TO WORK PROCEEDING.  
**CONTRACTORS RESPONSIBILITIES** - IT IS THE CONTRACTOR & SUB CONTRACTOR'S RESPONSIBILITY TO CHECK THE ACCURACY AND BUILDABILITY OF THE DESIGN AND THE SUITABILITY AND AVAILABILITY OF ALL MATERIALS IDENTIFIED ON THIS DRAWING IN A TIMELY MANNER, IN ORDER THAT RESPONSES TO SPARCSTUDIO LTD ACCEPT NO RESPONSIBILITY FOR ANY DELAYS TO PROGRAMME, ADDITIONAL COSTS ETC WHICH MAY BE INCURRED AS A RESULT OF UNTIMELY RESPONSES.

**ASSOCIATED INFORMATION** - THIS DRAWING IS TO BE READ IN CONJUNCTION WITH ALL RELEVANT AND ASSOCIATED DRAWINGS AND SPECIFICATIONS PRODUCED BY SPARCSTUDIO AND THE PROJECT CONSULTANT DESIGN TEAM.  
**COORDS** - P / SK / M / C / J INDICATE FINISHES GOODS - REFER TO RELEVANT FINISHES SCHEDULE FOR DETAILS.  
**SW** - REFERENCES INDICATE SANITARYWARE ITEMS - REFER TO RELEVANT SANITARYWARE SCHEDULE FOR DETAILS.  
**FP** - REFERENCES INDICATE FIXTURE & FITTINGS - REFER TO RELEVANT FIXTURE & FITTINGS SCHEDULE FOR DETAILS.  
**SERVICES ACCESS** - ACCESS TO SERVICES LOCATED IN CEILING VOIDS TO BE LIMITED WHEREVER POSSIBLE TO ALL LOCATIONS OF ACCESS MATCHES/POINTS IN FRONT OF HOUSE AREAS TO BE SET-OUT & COORDINATED WITH REFLECTED CEILING & LIGHTING PLANS AND APPROVED PRIOR TO INSTALLATION.

DESCRIPTION FOR DATE OF REVISION REFER TO ISSUE SHEET	REV
	1

**SPARCSTUDIO** DESIGN CONSULTANTS

20 WATER LANE  
 TUNBRIDGE WELLS, TN11 1TT  
 TELEPHONE: +44(0)203 637 5997  
 EMAIL: studio@sparcstudio.co.uk

CLIENT NAME: CLUB COMPANY  
 PROJECT NAME: WARRICKSHIRE STRIKE SHACK DRIVING RANGE  
 DRAWING TITLE: PROPOSED SITE SECTIONS  
 PROJECT NO: 3090  
 DRAWING NO: 10  
 DATE: 17.12.21  
 DRAWN BY: TH  
 CHECKED BY: