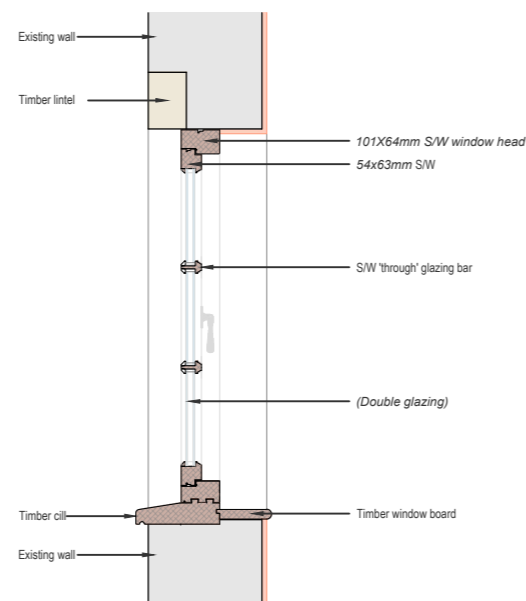
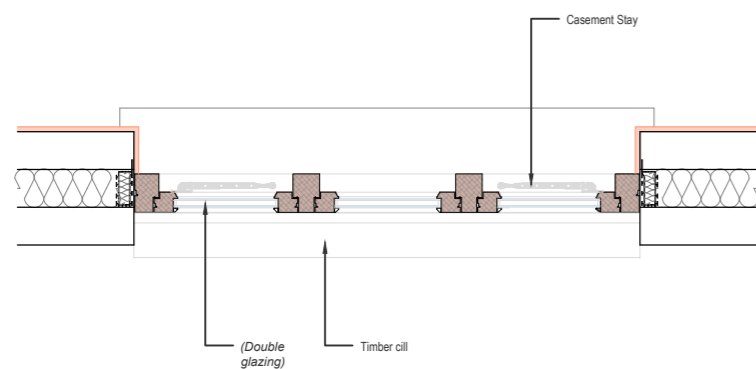


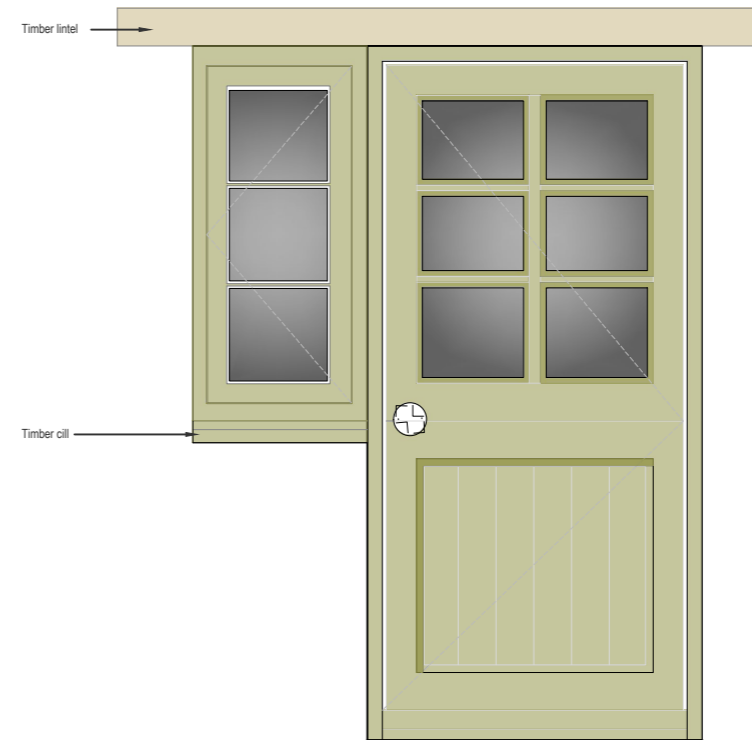
**TYPICAL WINDOW DETAIL**  
Softwood flush fitting casement window  
**ELEVATION**  
Scale 1:20



**TYPICAL WINDOW DETAIL**  
Softwood flush fitting casement window  
**SECTION**  
Scale 1:20  
Colour - TBC  
Ironmongery - (Finish & style TBC)  
Casement Fastener  
Casement Stay

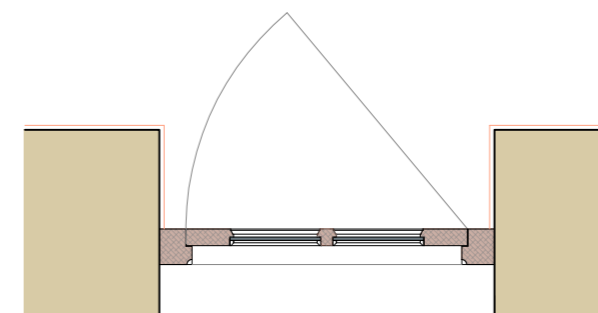


**TYPICAL WINDOW DETAIL**  
Softwood flush fitting casement window  
**PLAN**  
Scale 1:20



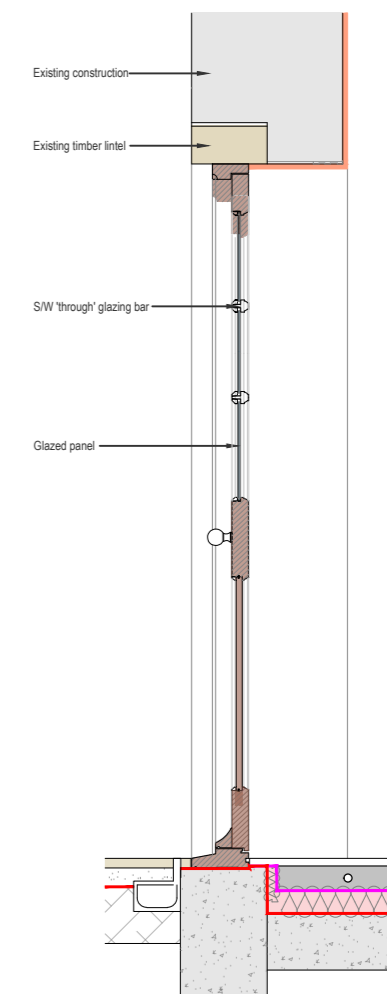
**ED.02 - New Entrance door & window (modified opening)**  
Softwood 2 panel part glazed external door & softwood flush fitting casement window

**ELEVATION**  
Scale 1:20



**ED.02**  
Softwood 2 panel part glazed external door

**PLAN**  
Scale 1:20



**ED.02**  
Softwood 2 panel part glazed external door

**SECTION**  
Scale 1:20

Colour - TBC  
Ironmongery - (Finish & style TBC)  
Door Knob & 5 lever lock



VISUAL SCALE 1:20

**FOR PLANNING**

Job No. <b>1515</b>	26 & 27 Main Street, Fotheringhay	
Drawing No. <b>007</b>	<b>Joinery Details</b>	
Revision -	<b>RTK Stamford Ltd.</b>	
Scale 1:20@A2	Issue Date 18/07/22	Drawn AB
<small>CHARTERED ARCHITECTS   CHARTERED SURVEYORS   PROJECT MANAGEMENT</small> <small>01780 482483 No.20 - PE9 2EF www.rtkstamford.com QR</small>		
<small>Drawing to be scaled for planning purposes only. All dimensions to be verified on site. All drawings are the copyright of RTK Stamford Ltd.</small>		