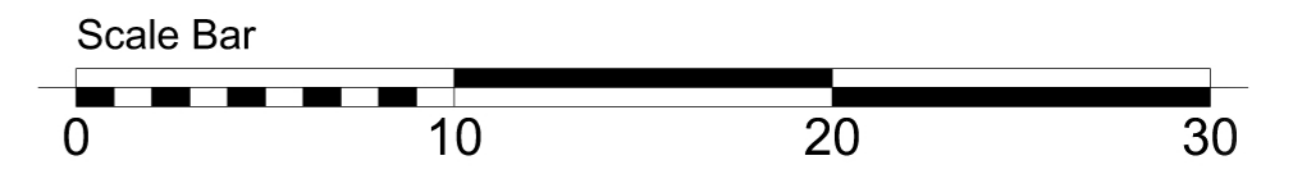


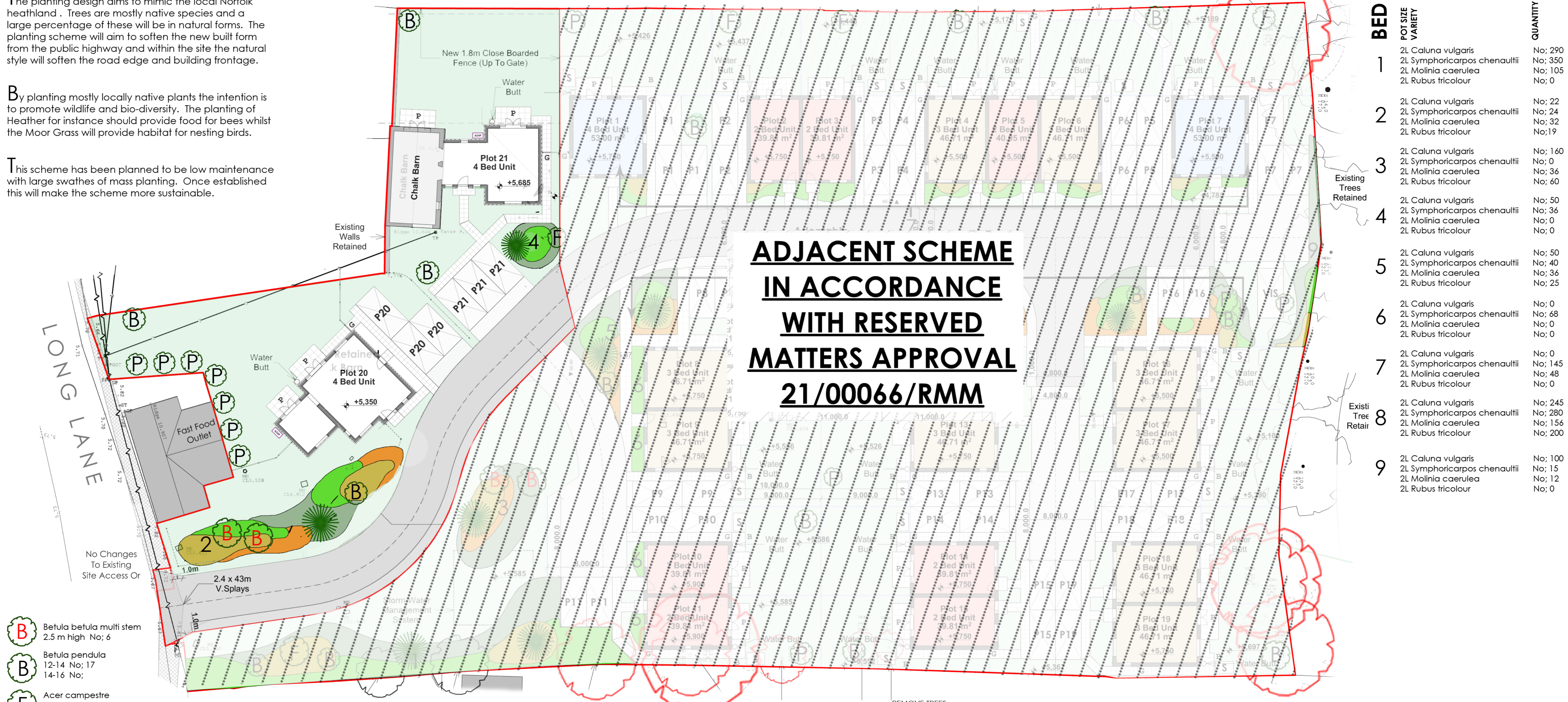
LONG LANE, FELTWELL - PLANTING PLAN



The planting design aims to mimic the local Norfolk heathland. Trees are mostly native species and a large percentage of these will be in natural forms. The planting scheme will aim to soften the new built form from the public highway and within the site the natural style will soften the road edge and building frontage.

By planting mostly locally native plants the intention is to promote wildlife and bio-diversity. The planting of Heather for instance should provide food for bees whilst the Moor Grass will provide habitat for nesting birds.

This scheme has been planned to be low maintenance with large swathes of mass planting. Once established this will make the scheme more sustainable.



BED	POT SIZE	VARIETY	QUANTITY
1	2L	Caluna vulgaris	No; 290
		Symphoricarpos chenaultii	No; 350
		Molinia caerulea	No; 105
		Rubus tricolour	No; 0
2	2L	Caluna vulgaris	No; 22
		Symphoricarpos chenaultii	No; 24
		Molinia caerulea	No; 32
		Rubus tricolour	No; 19
3	2L	Caluna vulgaris	No; 160
		Symphoricarpos chenaultii	No; 0
		Molinia caerulea	No; 36
		Rubus tricolour	No; 60
4	2L	Caluna vulgaris	No; 50
		Symphoricarpos chenaultii	No; 36
		Molinia caerulea	No; 0
		Rubus tricolour	No; 0
5	2L	Caluna vulgaris	No; 50
		Symphoricarpos chenaultii	No; 40
		Molinia caerulea	No; 36
		Rubus tricolour	No; 25
6	2L	Caluna vulgaris	No; 0
		Symphoricarpos chenaultii	No; 68
		Molinia caerulea	No; 0
		Rubus tricolour	No; 0
7	2L	Caluna vulgaris	No; 0
		Symphoricarpos chenaultii	No; 145
		Molinia caerulea	No; 48
		Rubus tricolour	No; 0
8	2L	Caluna vulgaris	No; 245
		Symphoricarpos chenaultii	No; 280
		Molinia caerulea	No; 156
		Rubus tricolour	No; 200
9	2L	Caluna vulgaris	No; 100
		Symphoricarpos chenaultii	No; 15
		Molinia caerulea	No; 12
		Rubus tricolour	No; 0

- Betula betula multi stem 2.5 m high No; 6
- Betula pendula 12-14 No; 17 14-16 No;
- Acer campestre 12-14 No; 5 14-16 No; 1
- Pyrus calleyrana 12-14 No; 10 14-16 No;
- Pinus sylvestris 2 m high 150 liter pot No: 8
- Rubus tricolour
- Symphoricarpos chenaultii
- Molinia caerulea
- Caluna vulgaris
- Tree to be removed
- Tree to be retained



Title: PLANTING PLAN 3, LONG LANE FELTWELL
 Drawn by: CDH Scale: 1:200 @ A1 Date: 8/11/20
 Address: 30, LONGLANE, FELTWELL Reference: 3569-LP3

Tally Ho House, Haselbech, Naseby, Northampton NN6 9LQ
 07812156809 chris@chlandscape.uk chlandscape.uk
 Director, CD Hodgson BA (Hons) Dip LA

PLANTING NOTES: Plants will be positioned as per this drawing and detailed area diagrams. All landscape works to be carried out broadly in accordance with the relevant current British Standards. Plant handling at the nursery, during transit up to delivery shall be in accordance with 'Plant Handling', the booklet published by the Committee for Plant Supply and Establishment (CPSE) and the Contractor shall comply with Clauses 3 & 4 of the above booklet (obtained from the Horticultural Trades Association, tel: 01734 303 132) which refer to the receipt, unloading and temporary storage of plants. Plants shall be first class examples of their species or variety, shall be free from all pests and diseases, with good fibrous root systems and materially undamaged (refer to relevant sections of BS3936 Parts 1-10 Specification of Nursery Stock) and BS4043 'Transporting Root-balled Trees'. All planting is to be in general compliance with BS4428: 1989 'Code of Practice for General Landscape Operations (excluding hard surfaces)'. The Contractor shall protect all existing vegetation in accordance with BS 5837: 2012 - 'Trees in Relation to Construction' during the whole of the contract period, up to Final Completion.

PROPOSED PLANTING BEDS
 All existing shrubs and plants will be removed and all roots and organic material will be filtered from the soil. New topsoil will be added to help improve the existing soil ad to replenish. The Contractor is to supply topsoil to the approval of the Contract Administrator. It shall comply with BS 3882: 2007 - 'Specification for Topsoil' and shall also comply with the following specification. Imported topsoil shall be a suitable medium for growing the ordinary range of grasses and cultivated plants under satisfactory conditions of management. Topsoil must be an 'as-dug' soil from an approved source, obtained from the top of 150mm of ground. Manufactured or composite screened topsoil will not be acceptable. A sample of topsoil shall be approved by the Contract Administrator. The topsoil total depth should be a minimum of 400mm

MULCHING THE PLANTING BEDS
 The beds will then be mulched with a 75mm minimum deep layer dark matured wood chip Mulch shall comprising of matured British conifer bark with an even particle size distribution between 5-35mm. The mulch shall contain less than 5% wood. The mulch shall be pest, disease and weed free, and be free of Methyl Bromide contamination. The mulch shall be from an approved source and a representative (minimum size 5L) sample of the mulch shall be supplied for approval prior to delivery to site. The final mulch surface is to be left in a tidy raked condition.

TREE PLANTING
 Trees will be planted in a wide, shallow tree pit a minimum 4m2 in area by 300-400mm deep. The subsoil layer will be loosening for a further 300-450mm. Note: tree pits widths can be reduced to approximately 1.5m wide (still at 4m2 though) for (generally smaller) short-lived trees and a minimum 2m wide for (generally larger, long-lived trees), any implementation specifications should clearly reflect these tree pit decompaction measures. Trees in grassed zones these to be planted centrally within a 1m square/round recessed planting bed with a incorporate a strimmer guard.

Staking:
 In line with good arboricultural practice & BS8545 newly planted trees to be adequately supported (e.g. single stake for standards - double for extra heavy, underground or above ground guyed guy (if guyed give details of fixings). All types of support to be specified as being sufficiently low to allow free movement of the crown, stakes to be set at a uniform height and at a 300mm minimum depth below ground level with, where staked, a suitable fixing toward the head of stake.
 Heavy and extra heavy standard trees: To be double staked (at 900mm above ground level) and tied with a rubber webbing tie and 2no. spacers.
 Note: The contractor must ascertain the exact position of all services/maintenance points. No tree should be planted within 3m of service lines