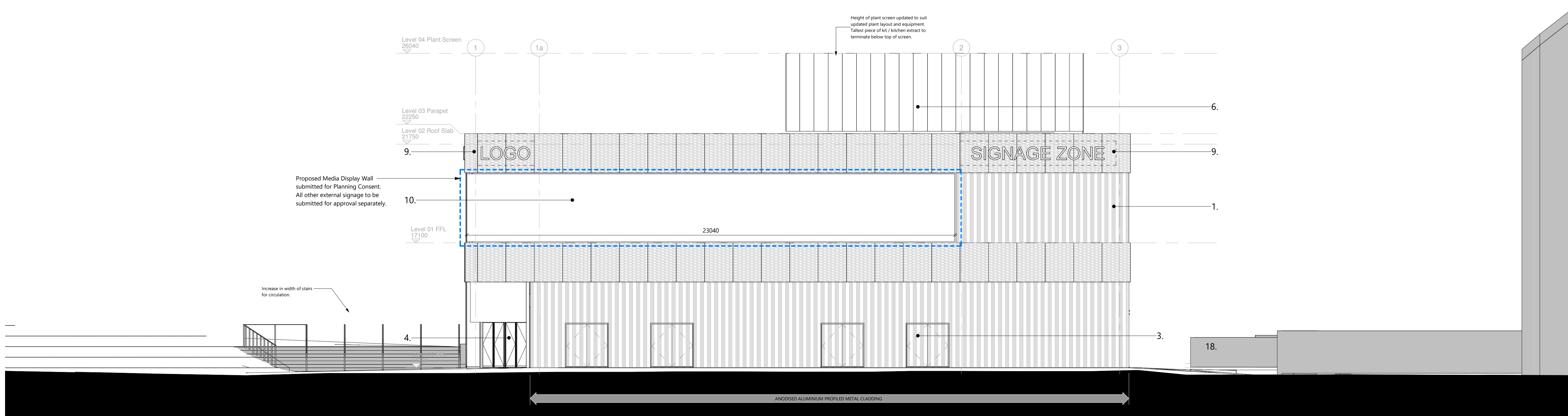


West Elevation
 Scale - 1 : 100

- Elevation Notes:**
- Expanded, durable anodised aluminium panels, linking Edmiston House to Govan context and shipbuilding heritage.
 - Profiled, durable anodised aluminium / PPC aluminium panels, linking Edmiston House to Govan context and shipbuilding heritage.
 - Acoustic event space doors, with profiled anodised aluminium finish as per item 2 to blend into south elevation. Framing PPC matt RAL 9004 to match door.
 - Automated bi-folding entrance doors, PPC matt RAL 9004.
 - Industrial sliding door allowing conference space to turn into a sheltered fan zone on match days. To be finished with profiled anodised aluminium as per item 2 to blend into elevation all other elements and framing to be PPC matt RAL 9004.
 - Aluminium plant screen panels, PPC matt RAL 9004 to match curtain walling and other external metal framing elements.
 - External terrace spilling out from cafe space via glass bi-folding doors.
 - Industrial steel balustrade. To be PPC matt RAL 9004 to match anodised aluminium panels.
 - Signage zone. Sign design to be determined in separate advertisement consent application. 3mm steel plate behind mesh where applicable to support signage to SE specification.
 - LED Media display / advertisement zone. Content to be agreed in separate advertisement consent application.
 - Stainless steel kitchen vertical extract jet flue, screened behind plant screen.
 - Expanded, durable anodised aluminium soffit panels, linking Edmiston House to Govan context and shipbuilding heritage.
 - 'H' Capped curtain walling units creating visual link to retail or cafe elements within. Frames to be PPC matt RAL 9004.
 - External access and egress doors on east and north elevations to be PPC matt RAL 9004.
 - Metal bin store screening PPC matt RAL 9004.
 - Horizontal anodised aluminium flashing continuing floor edge banding.
 - Aluminium weather louvre panel sized to suit M&E requirements.
 - PPC Matt RAL 9004 Cycle Shelters, with 22 secure bike spaces



South Elevation
 Scale - 1 : 100

15	Planning Advertisement Consent for Media Wall Update	ML	FD	2022.07.15
14	Non Material Variation Submission	EF	FD	2022.05.17
13	Non Material Variation Submission	ML	FD	2022.04.19
12	Contract Issue	GM	FD	2021.10.15
11	Non Material Variation Submission	EF	FD	2021.10.06
10	Updated to remove copper reference	EF	FD	2021.10.04
9	Construction Issue, including updated in line with Change Control 11.3 & 11.6	EF	FD	2021.08.20
8	Tender Issue	KDD	FD	2021.02.15

Rev	Description	D'n	CHK'd	Date
-----	-------------	-----	-------	------



GLASGOW
 180 West Regent Street
 Glasgow
 G2 4PL
 Tel: 0141 204 0066
 www.keppiedesign.co.uk

Client
Rangers Football Club

Project
Edmiston House

Drawing
Elevations Sheet 1

Project No.
P19-013

Drawing No.
KEP-XX-XX-DR-A-7030-0001

Status
Planning

Created	FD	Checked	RM
Date	05/09/20	Scale	As @ A1
			indicated

