

---

## PHOTOGRAPHIC PLATES

---

Cont'd overleaf.../



Coverage across the UK from offices in London, Reading, Exeter, Rutland, Nottingham, Llandudno, Chester, Manchester, Leeds and Newcastle

[www.smitherspurslow.com](http://www.smitherspurslow.com)



**INVESTORS  
IN PEOPLE**

**Platinum**  
Until 2022

Registered Office: Glaston Hall, Spring Lane, Glaston, Oakham, Rutland LE15 9BZ  
Smithers Purslow Limited, Registered in England Number: 1402539

GLASTON HALL  
SPRING LANE, GLASTON  
RUTLAND LE15 9BZ  
t. 01572 822000  
e. [glaston@smitherspurslow.com](mailto:glaston@smitherspurslow.com)

## PHOTOGRAPHIC PLATES

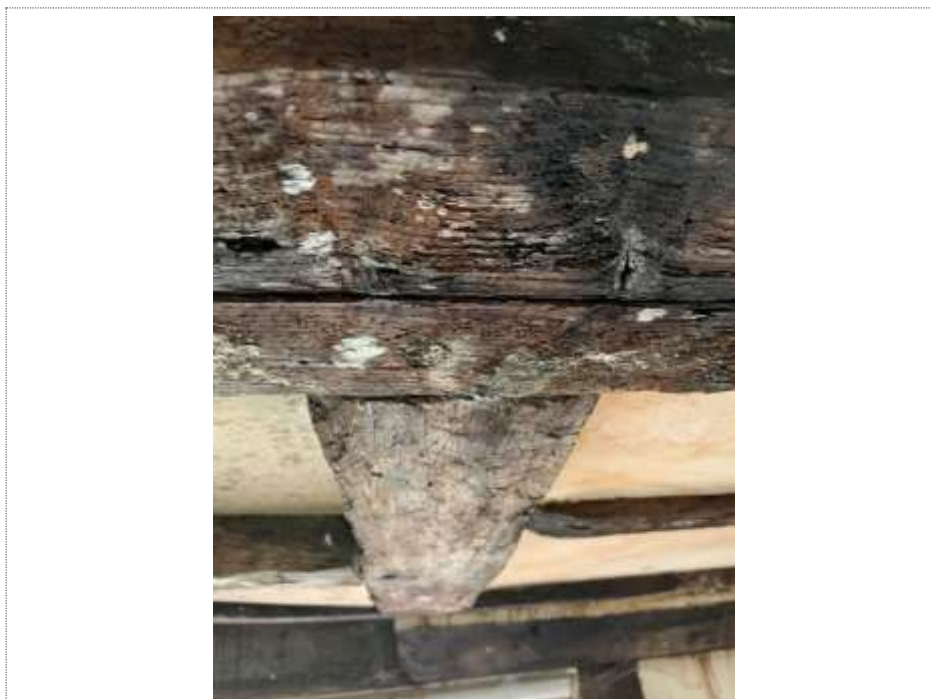


Plate 1. Rot on internal timbers.

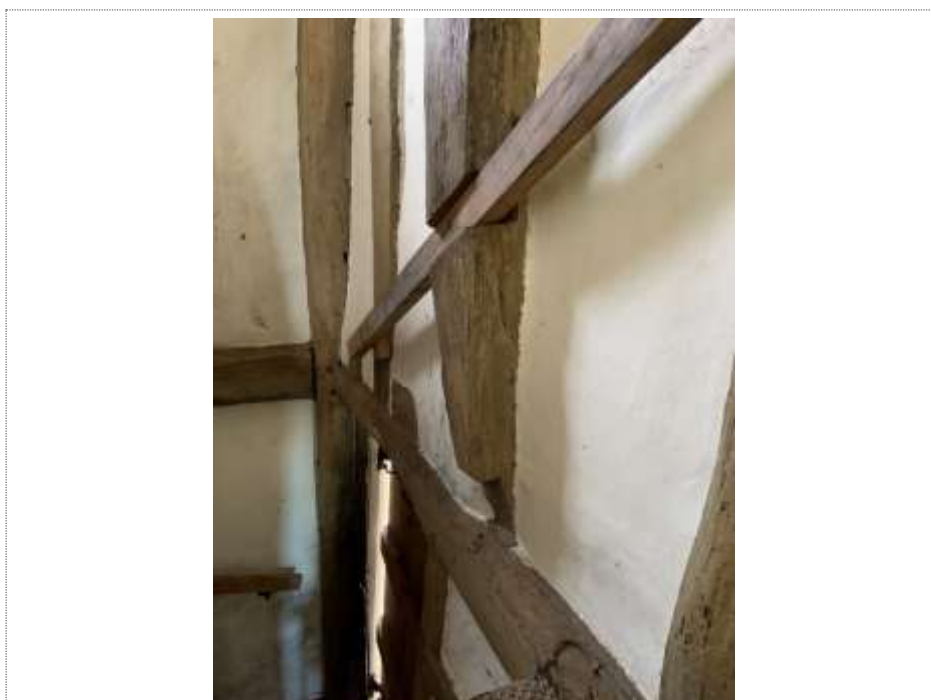


Plate 2. Some structural timbers have been cut to accommodate internal alterations.

Cont'd overleaf.../



Plate 3. Roof 1 – Lower left-hand side.



Plate 4. Branches used as battens.

Cont'd overleaf.../





Plate 5. Bracing around the chimney structure.



Plate 6. Internal chimney.

Cont'd overleaf.../



Plate 7. Back of Roof 1.



Plate 8. Historic termite/insect attack.

Cont'd overleaf.../





Plate 9. Roof 2 – Middle roof with 2-dimensional frame.

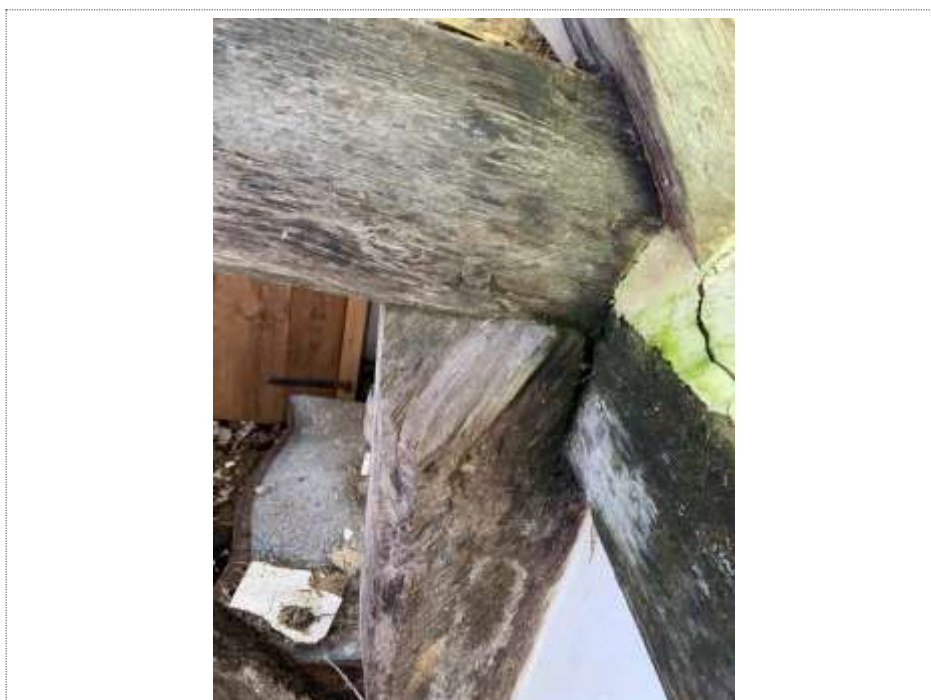


Plate 10. Tie beam to column connection point.

Cont'd overleaf.../



Plate 11. Gallows bracket to column connection.



Plate 12. View on the frame parallel to front elevation.

Cont'd overleaf.../



Plate 13. Timber framed, cob infill internal gable wall.



Plate 14. Wall plate at the front wall.

Cont'd overleaf.../





Plate 15. Roof 3 – Right-hand side upper level roof.

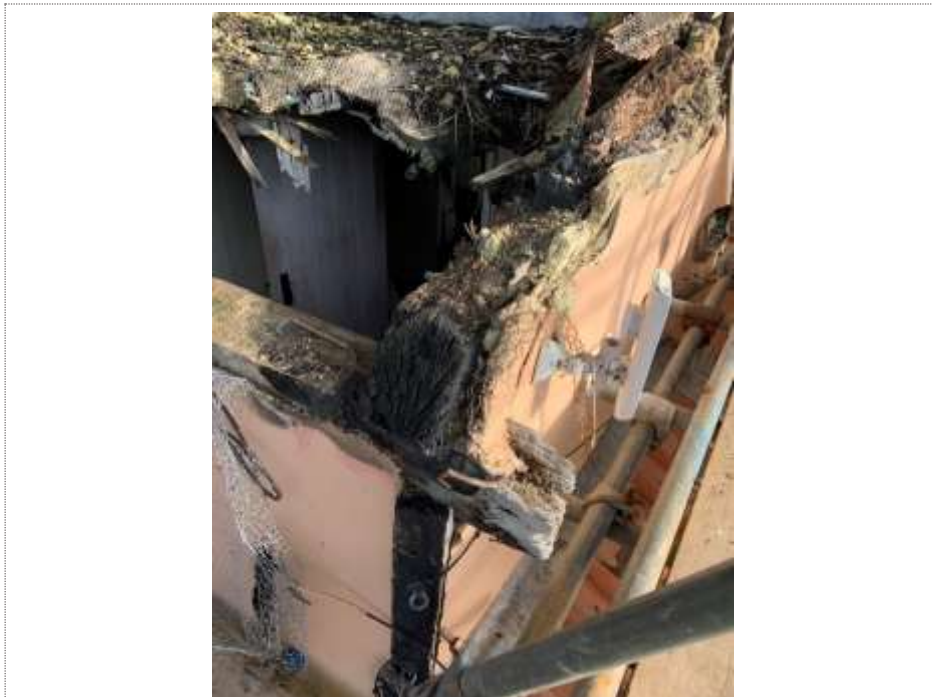


Plate 16. Wall plates overlapping and extending over the edge of the wall.

Cont'd overleaf.../



Plate 17. Vegetation growing at the back of Roof 3.



Plate 18. More modern lath and plaster finish on Roof 3 compared to Roof 2.

Cont'd overleaf.../



Plate 19. Damaged timber framed gable wall.

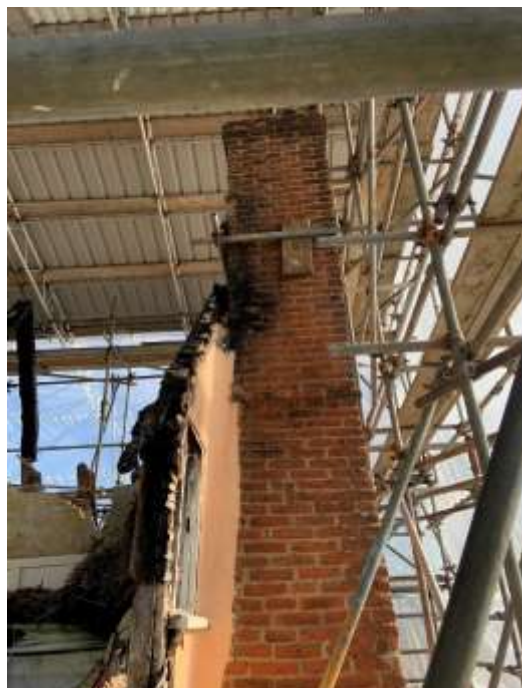


Plate 20. Soot residue on the chimney.

Cont'd overleaf.../





Plate 21. External cracking.