

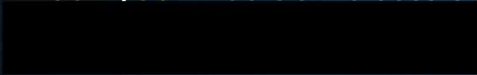
Service & Support Solutions

# SmartServPro

The power of protection in your hands.

With SmartServ Pro, enjoy complete peace of mind, with total visibility on your asset performance as well as improved pollution prevention and compliance.

Book your free demo session on



[kingspanservice.com](http://kingspanservice.com)





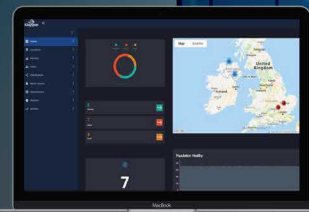
# SmartServPro

## Technology that speaks for itself

Developed by Kingspan, SmartServPro is an asset monitoring solution which remotely monitors the performance of a building's wastewater systems.



Proactive pollution prevention is now more important than ever and the SmartServ Pro solution has been developed in line with Kingspan's commitment to Planet Passionate, a series of ambitious targets to reduce our carbon footprint.



50+ YEARS' EXPERIENCE

For more details on our competitive package email: [Redacted]

### Features

- Real time information
- Instant alerts via email or SMS
- Fault warnings include high level alarm, loss of power, motor pump trips, loss of rotation (and more)
- Remote monitoring via SmartServ Pro portal
- Geolocation enabled
- All data is stored and back up on a centralised secure cloud database

# SmartServPro

## Benefits

### The benefits of SmartServ Pro



Real-time data on condition monitoring, allowing you to schedule service and maintenance visits when required, including tank emptying.



Total visibility with access to asset information across your estate, any-time, anywhere through the new SmartServ Pro portal.



Convenience via automatic alerts sent directly to you via email or SMS, ensuring you are alerted as soon as an issue arises. Fault warnings include: high level alarm, loss of power, motor/pump trips, loss of rotation (sewage treatment plants only) and more.



A positive environmental impact through a reduced carbon footprint.

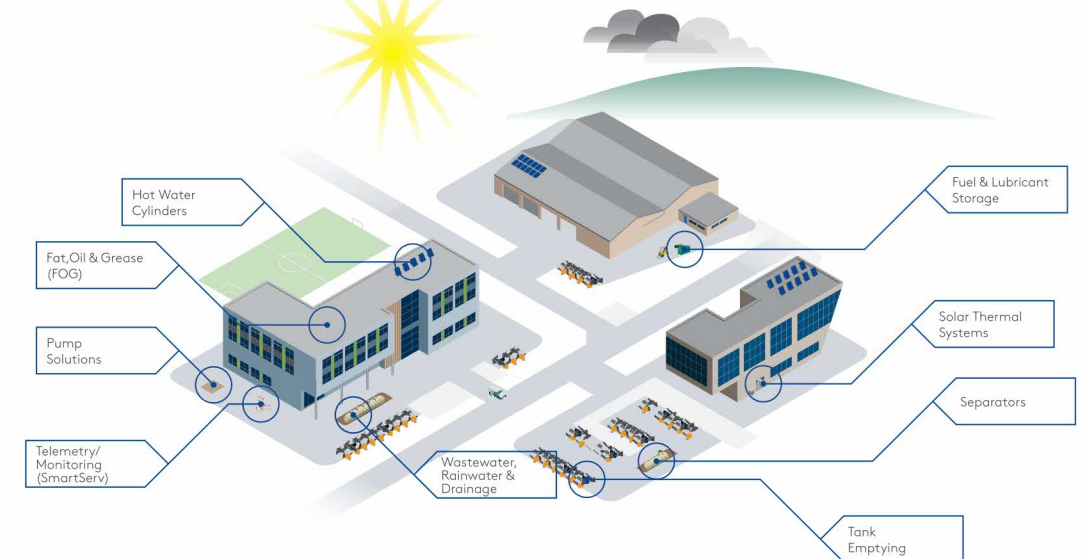


Efficient service and maintenance planning and scheduling, allowing you to reduce your company's carbon footprint, preventing pollution and saving money on unnecessary work.



Links to your current BMS system, avoiding the hassle of replacing it.

### What type of asset can SmartServPro monitor?



To request a FREE site demo, contact: [helpingyou@kingspan.com](mailto:helpingyou@kingspan.com)

---

# Contact Details

---

Visit [Kingspanservice.com](http://Kingspanservice.com) to learn more about how we can support your business needs.

**Global Head Office**

180 Gilford Road  
Portadown  
Co. Armagh  
BT63 5LE United Kingdom



Kingspan Service & Support Solutions

