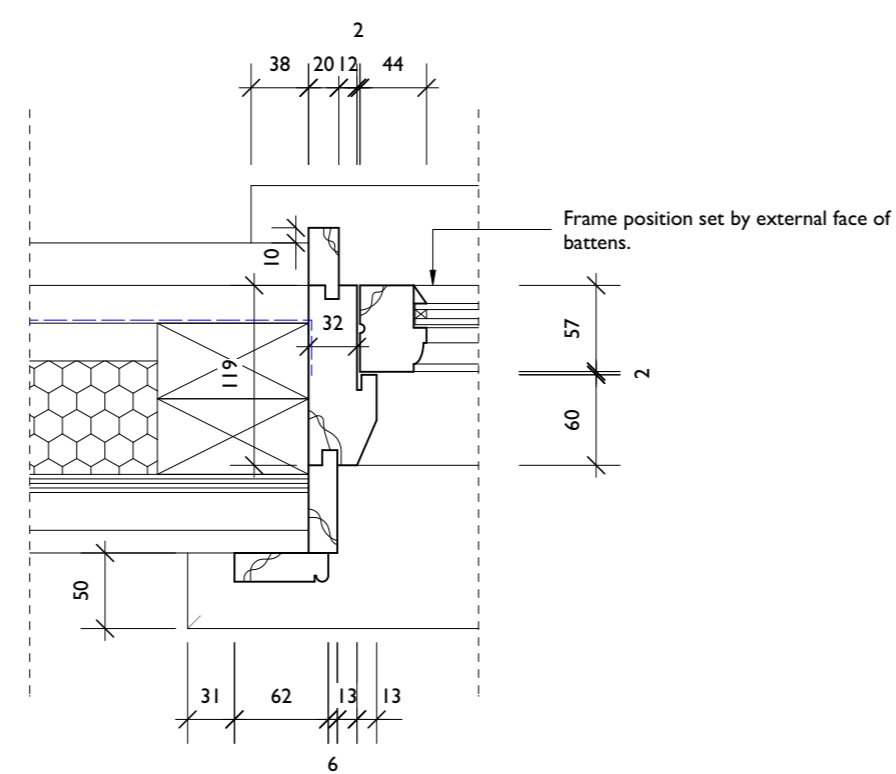
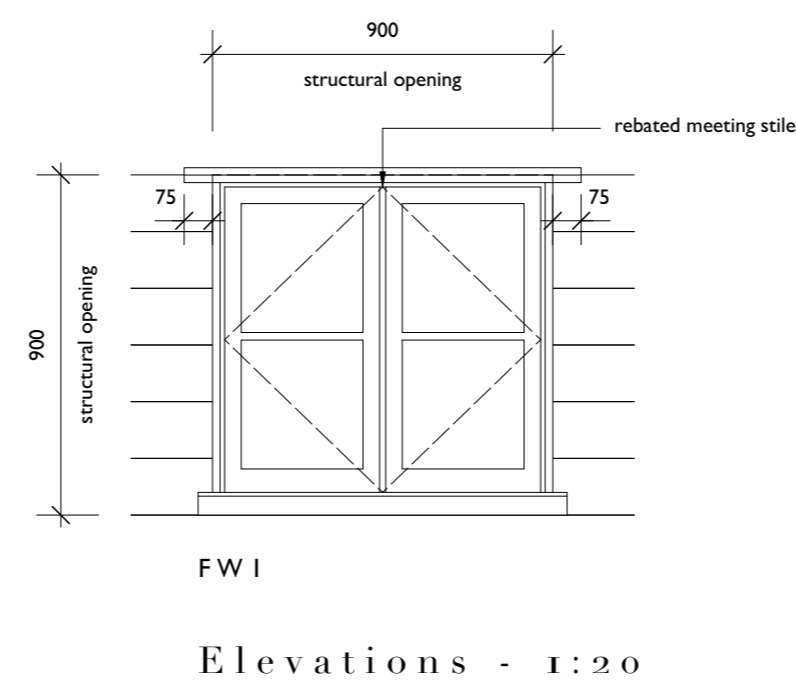


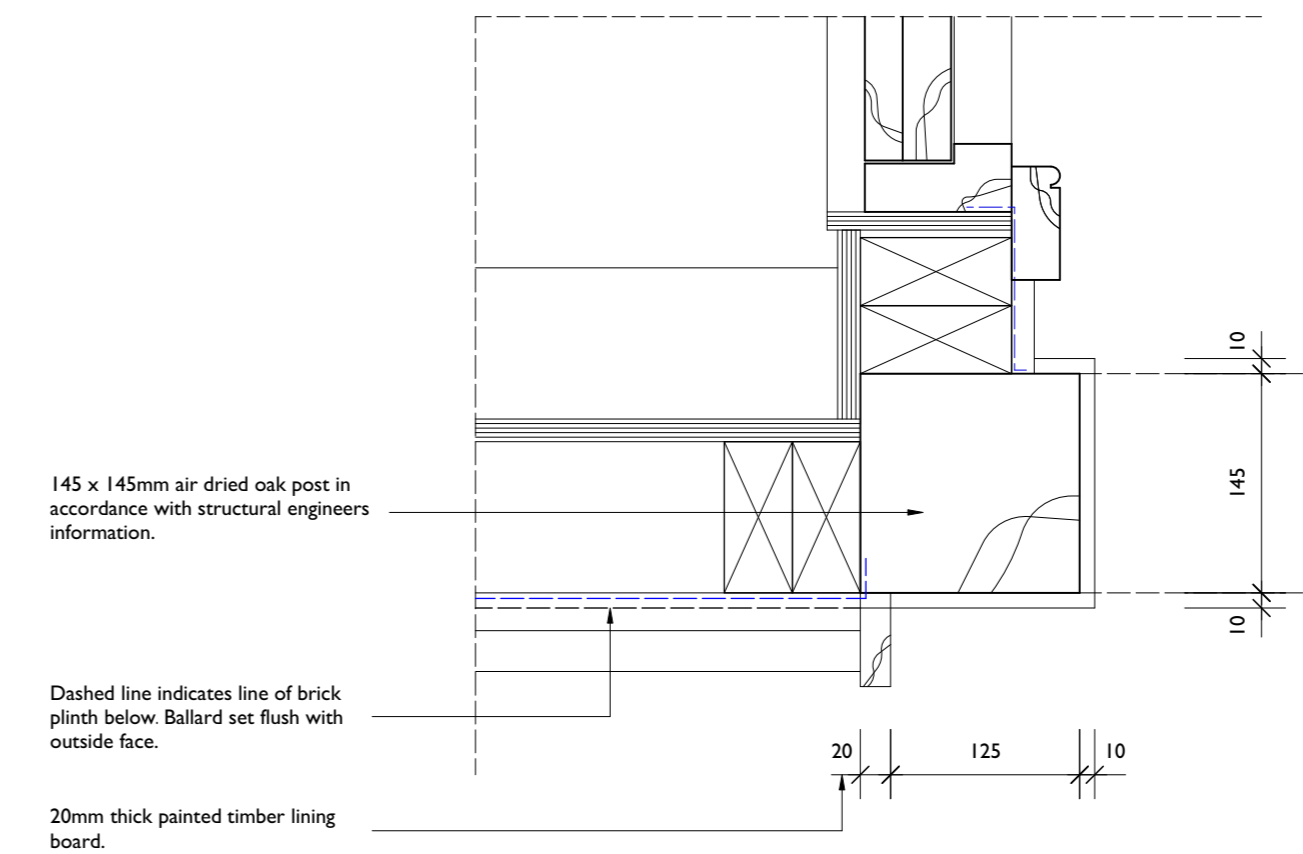
Vertical Section Through FW1 - 1:5



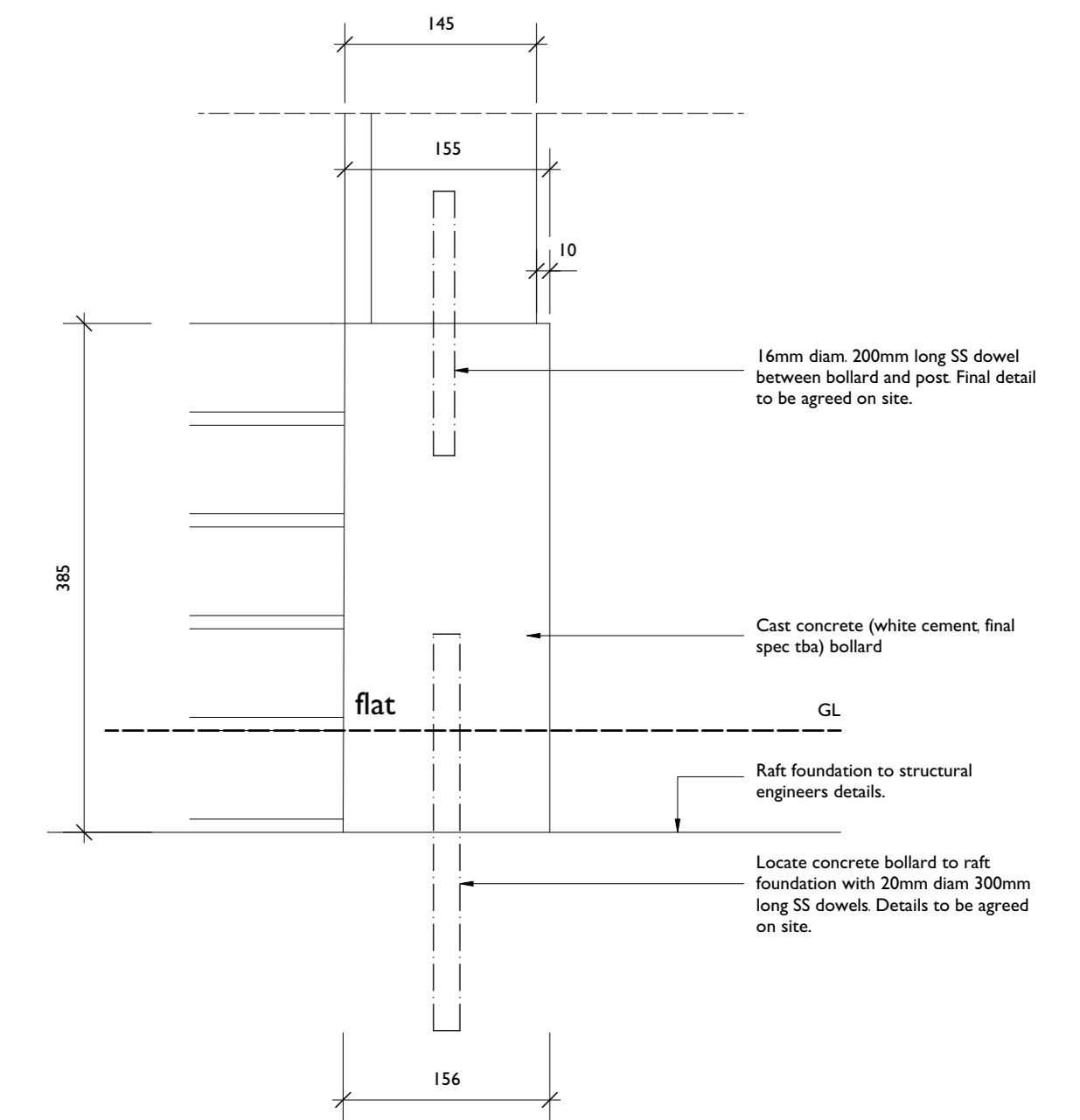
Horizontal Section Through FW1 - 1:5



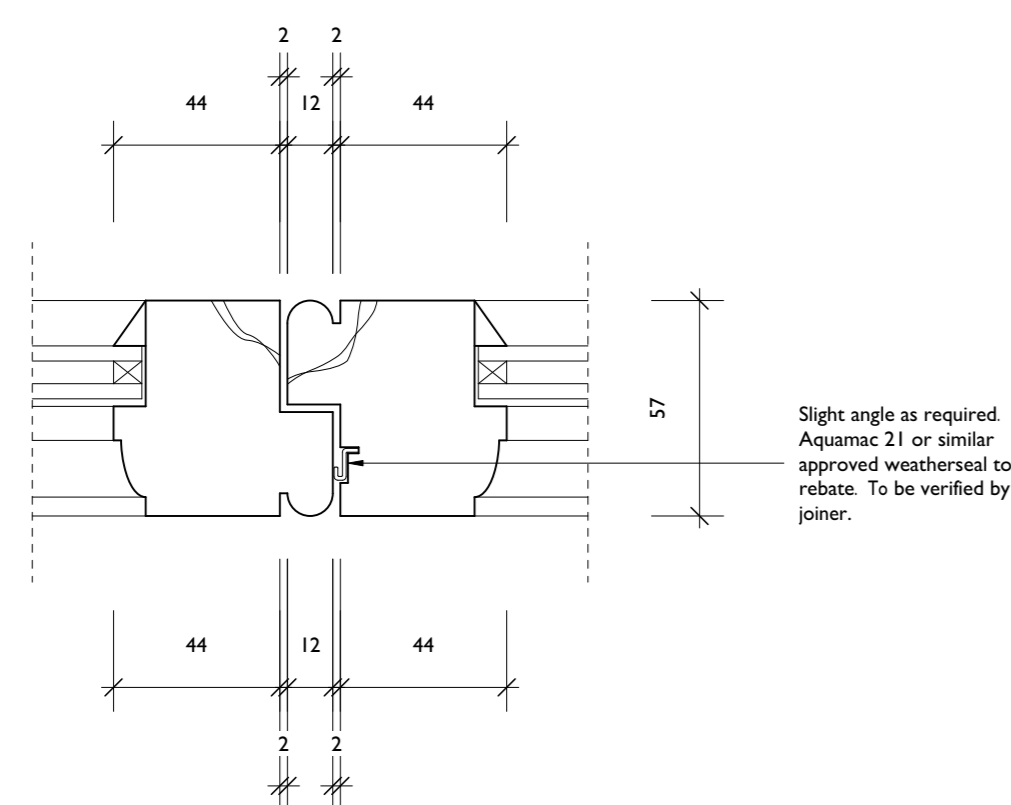
Elevations - 1:20



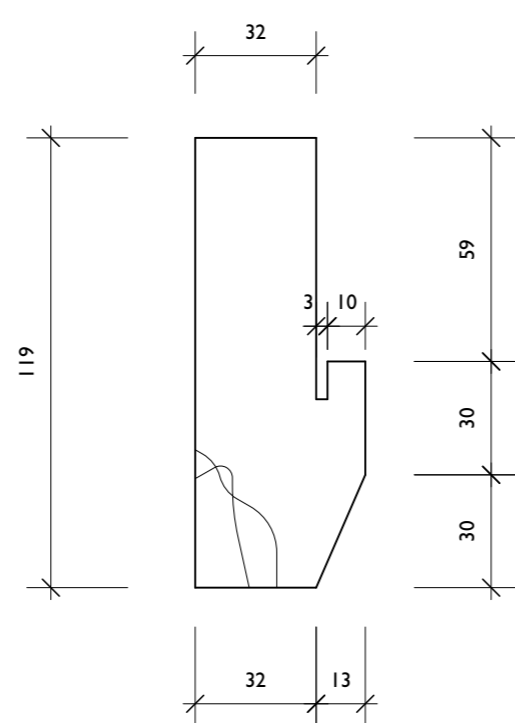
Bollard Detail - 1:5



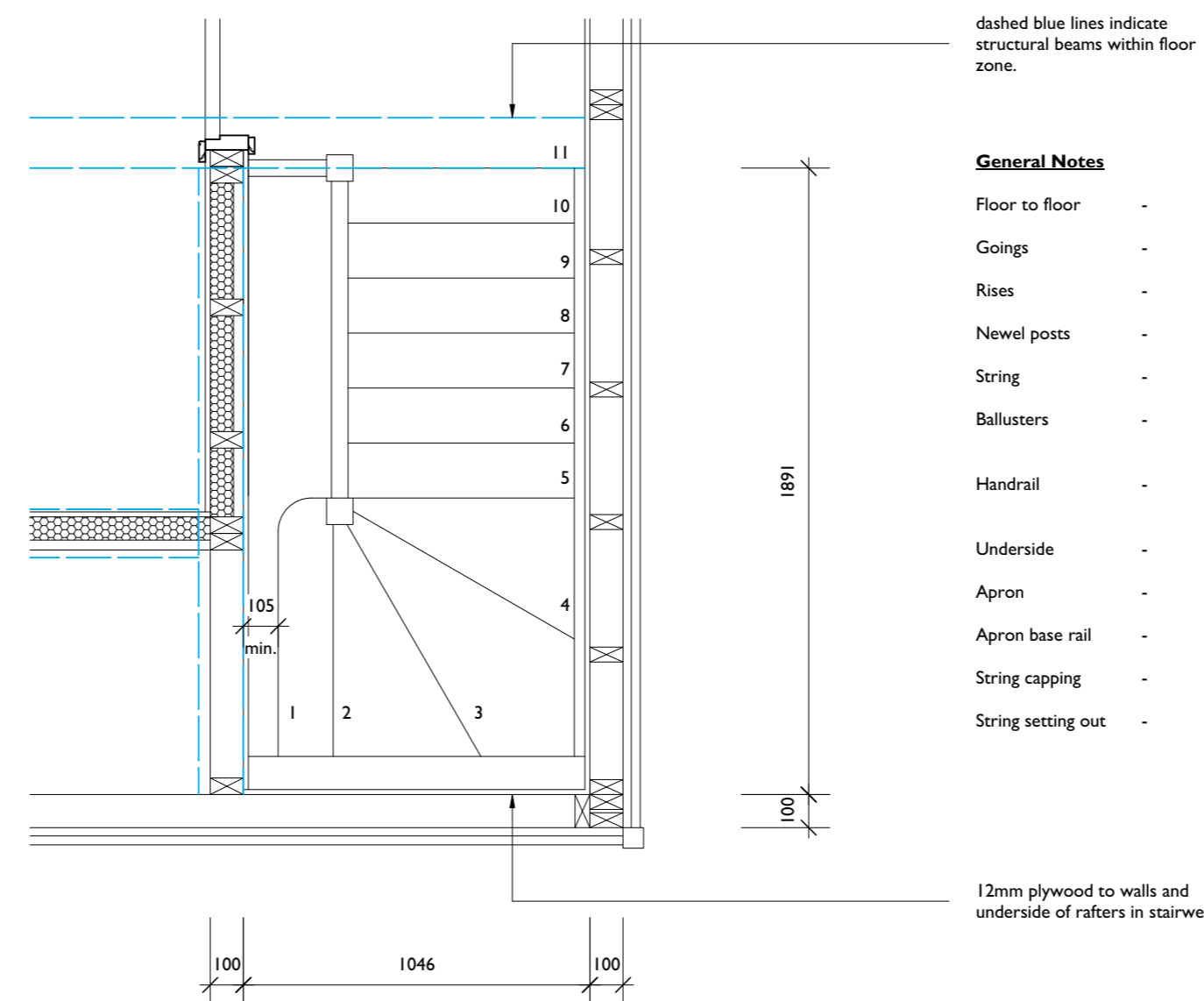
Oak Brace Detail - 1:5



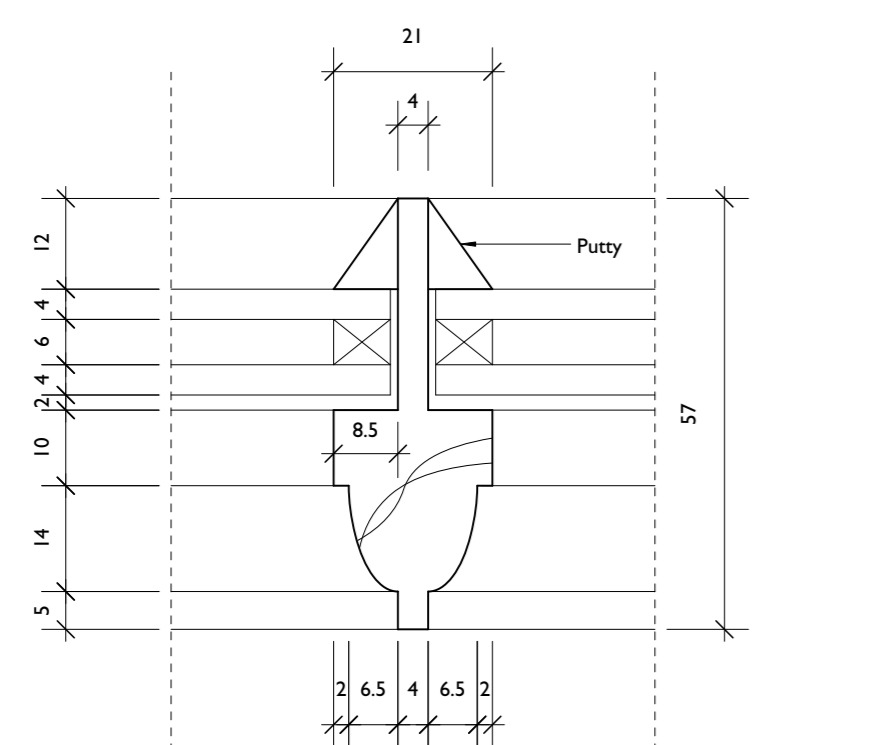
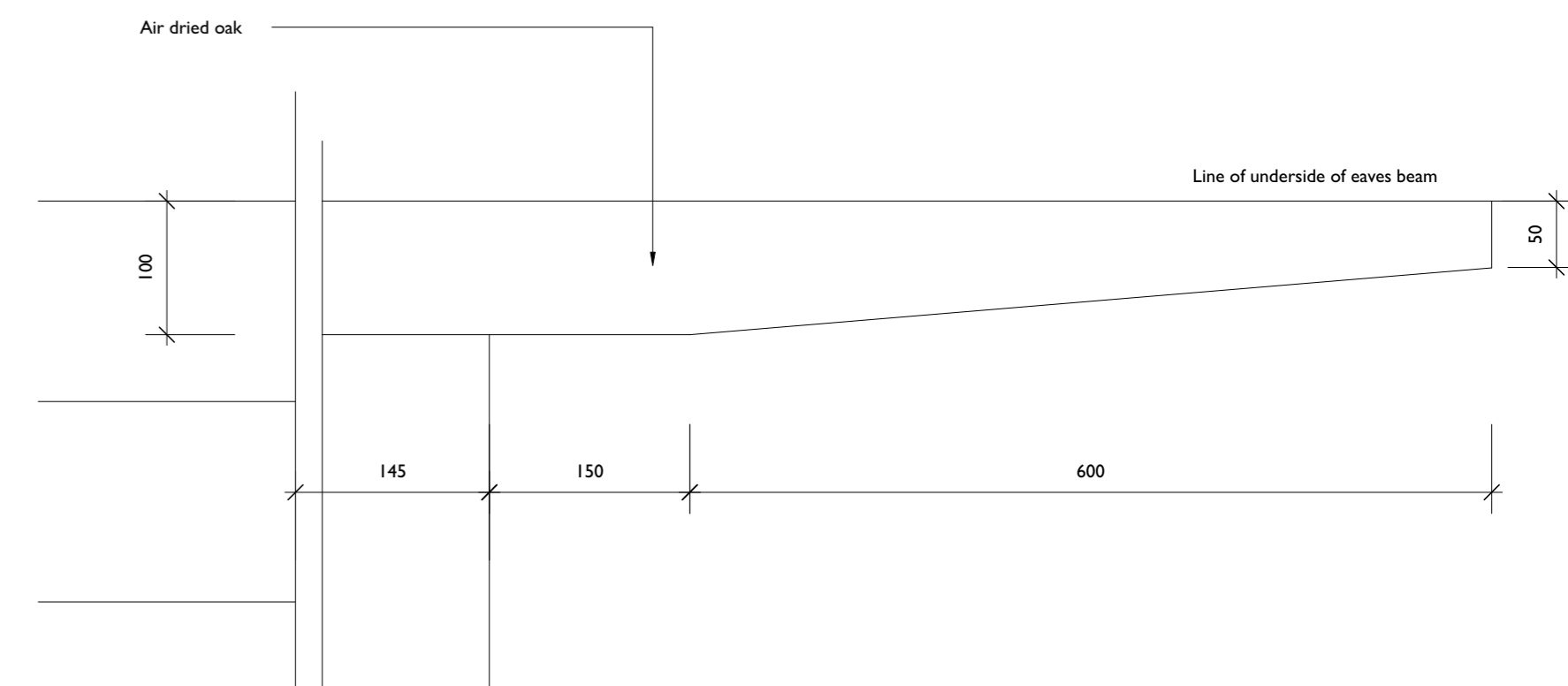
Casement Rebated Meeting Stile Detail - 1:2



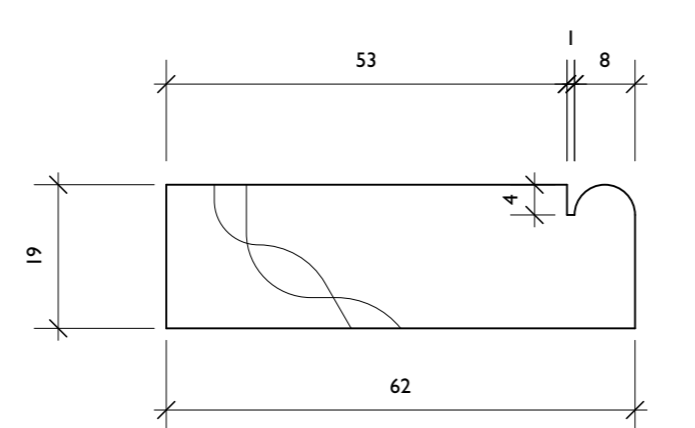
Jamb Detail - 1:2



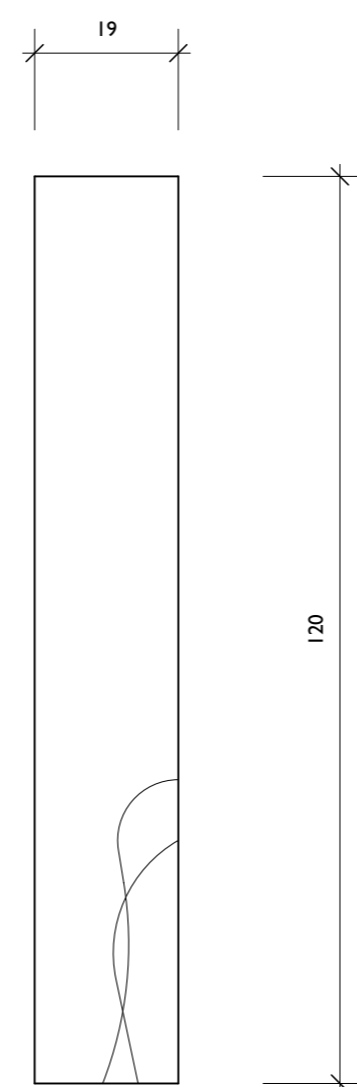
Stair Details - 1:20



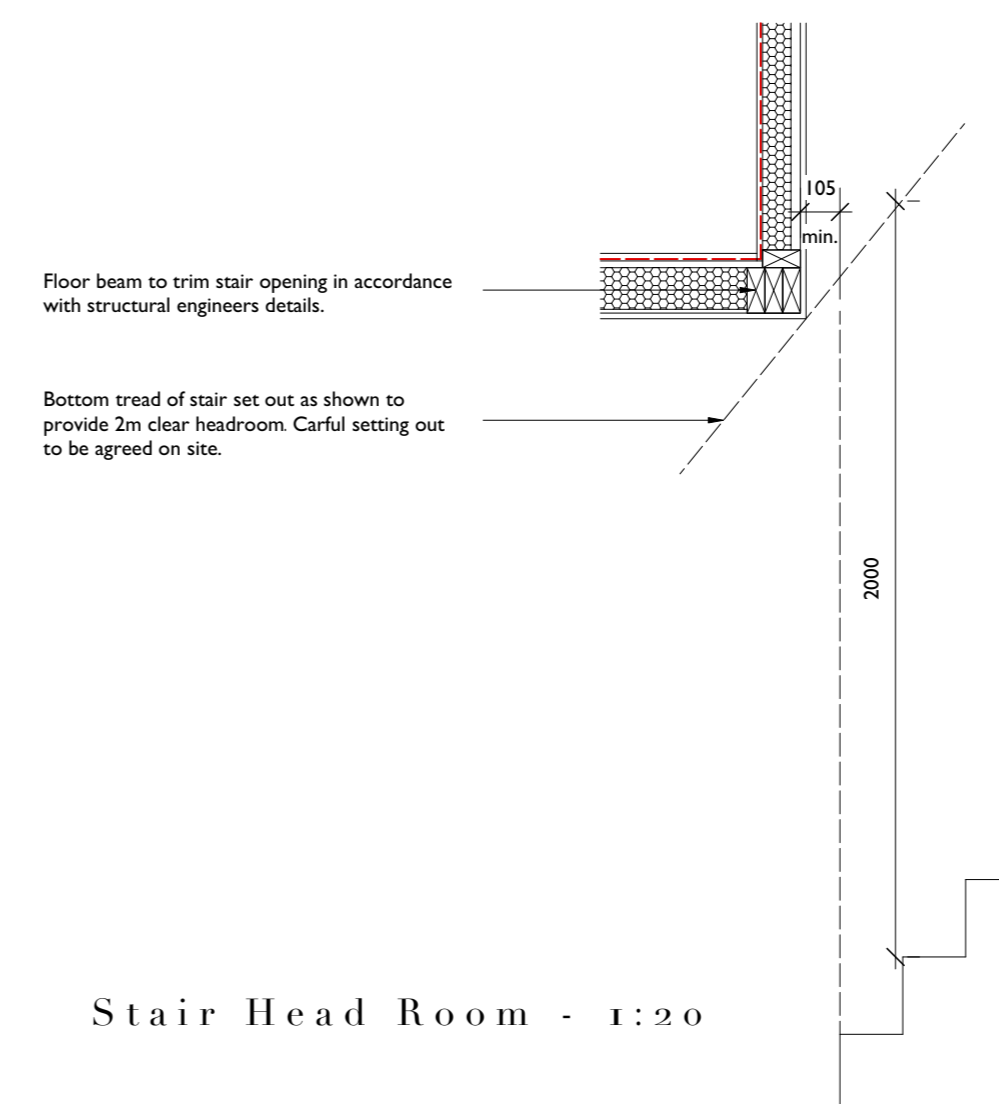
57mm Double Glazing Bar - 1:1



Architrave Detail - 1:1



First Floor Skirting - 1:1



Stair Head Room - 1:20

**DRAFT**

This drawing to be read strictly in accordance with the General Joinery Notes on drawing no. 1121-12

This drawing to be read strictly in accordance with the General Notes and Residual Risk to Health and Safety Information on drawing no. 1121-11

**ROGER BALMER**  
DESIGN

FOUNTAIN HOUSE STUDIO THE STREET EAST BERGHOLT COLCHESTER CO7 6TB  
Telephone: 01206 299477 Email: enquiries@rogerbalmerdesign.co.uk

Client	Project	Drawing
Mr and Mrs Duckworth-Chad	Sparrows Shelley Suffolk	Outbuilding Joinery Details Sheet 2
Scale	Date	Del.
As noted at A1	July 2022	BOC
		Drawing no. Rev.
		1121 - 14

Contractors must verify all dimensions and information on site prior to commencement of work. Do not scale from drawing.  
© Roger A Balmer Ltd