

**Key**

- Lawn
- Existing trees / hedges
- Proposed Hedge/Planting beds
- Gravel
- Brickwork paving
- Decorative planting

**Ecological Information**

All mitigation measures and/or works shall be carried out in accordance with the details contained in the Ecological Report (MHE Consultants Ltd June 2022). Biodiversity enhancements and compensation measures as noted \*1 - 5.

The works shall be carried out strictly in accordance with the approved details and shall be retained in that manner thereafter.

The Applicant is responsible for implementing and maintaining the ecological enhancement measures.

Existing meadow to be retained

**Ecology 3\* (Compensation)**  
 2no open-fronted bird boxes (Appendix A6) suitable for robin and wren mounted on tree. Open fronted Nest Box by Bark Boxes To be installed on tree trunks approx. 1m high from ground level within 10m radius. Entrance hole facing North-East. To be installed between September and March. Annual visually inspection in autumn for damage from September onwards. Clean with boiling water only as required. Insecticide and flea powders must not be used.

**Ecology 4\* (Compensation)**  
 Tree planting of native species to include: Wild service tree (*Sorbus terminalis*), Whitebeam (*S. arsa*), Wayfaring tree (*Viburnum lantana*), Small-leaved lime (*Tilia cordata*), Black poplar tree (*Populus nigra*), Wild cherry (*Prunus avium*), Bird cherry (*Prunus padus*) and Spindle (*Euonymus europaeus*). Planted within clients site ownership boundary. All to be UK sourced and grown.

Proposed garage: Refer to dwg no 1121-06

**Ecology 1\* (Compensation)**  
 4no. Kestrel Boxes by Wildcare (Appendix A5) mounted on suitable trees. To be sited high up between 2.5m and 5m on a building or mature tree using the pre-drilled back plate hanger. Self-cleaning and not to be disturbed.

Existing gravel area extended to match existing surface with 10mm loose Golden gravel.

50mm thick Breedon Golden amber self binding gravel track (2 no. 500mm wide tracks) on 150mm Type 1 hardcore on terram.

Existing hedge retained

Brickwork wall amended with opening increased to provide 3m wide access through to courtyard

Proposed painted metal handgate to replace existing. Refer to dwg no 1121-07

**Ecology 2\* (Enhancement)**  
 Any ornamental planting to utilise nectar rich plants for the benefit of pollinators and associated predators (eg foraging bats and hedgehogs). Planting to include nectar rich climbers such as traveller's joy (*Clematis vitalba*) and honeysuckle (*Lonicera periclymenum*) planted at 5m intervals along existing hedges.

Proposed converted cartilage. Refer to dwg no 1121-05

Rev E	Additional Ecological information added	BOC	28.07.22
Rev D	Ecological enhancements amended	BOC	26.07.22
Rev C	Additional neighbouring house information	BOC	08.04.22
Rev B	Site Plan amended	BOC	04.02.22
Rev A	Extent of cobbles shown at vehicular access	BOC	12.01.22

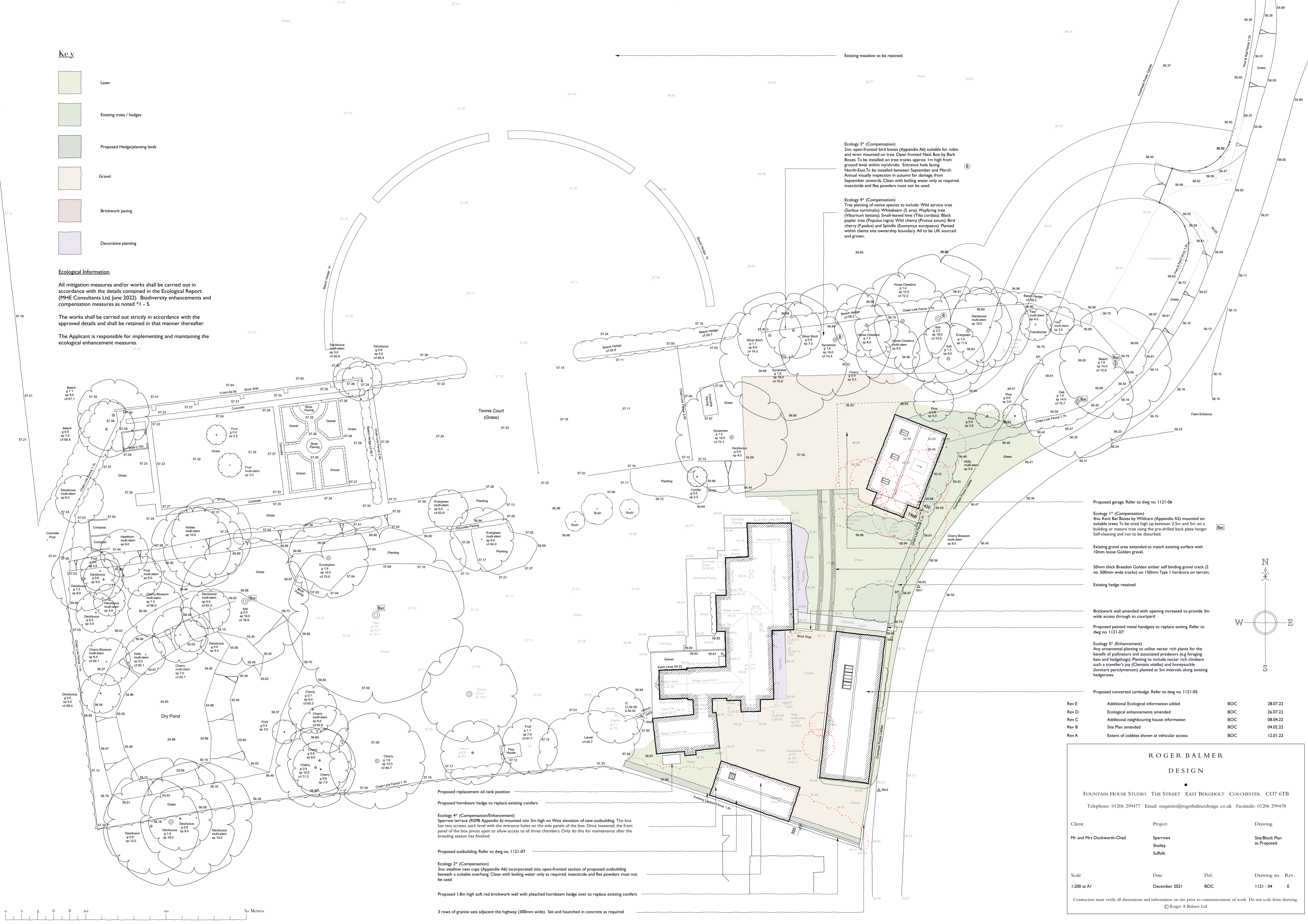
**ROGER BALMER  
DESIGN**

FOUNTAIN HOUSE STUDIO THE STREET EAST BERGHOLT COLCHESTER CO7 6TB  
 Telephone: 01206 299477 Email: enquiries@rogerbalmerdesign.co.uk Facsimile: 01206 299478

Client	Project	Drawing
Mr and Mrs Duckworth-Chad	Sparrows Shelley Suffolk	Site/Block Plan as Proposed

Scale	Date	Del.	Drawing no.	Rev.
1:200 at A1	December 2021	BOC	1121 - 04	E

Contractors must verify all dimensions and information on site prior to commencement of work. Do not scale from drawing.  
 © Roger A Balmer Ltd



- Proposed replacement oil tank position
- Proposed hornbeam hedge to replace existing conifers
- Ecology 4\* (Compensation/Enhancement)**  
 Sparrow terrace (RSPB Appendix 6) mounted min 3m high on West elevation of new outbuilding. The box has two screws, each level with the entrance holes on the side panels of the box. Once loosened, the front panel of the box pivots open to allow access to all three chambers. Only do this for maintenance after the breeding season has finished
- Proposed outbuilding. Refer to dwg no 1121-07
- Ecology 2\* (Compensation)**  
 3no swallow nest cups (Appendix A6) incorporated into open-fronted section of proposed outbuilding beneath a suitable overhang. Clean with boiling water only as required. Insecticide and flea powders must not be used.
- Proposed 1.8m high soft red brickwork wall with pleached hornbeam hedge over to replace existing conifers
- 3 rows of granite sets adjacent the highway (300mm wide). Set and haunched in concrete as required.