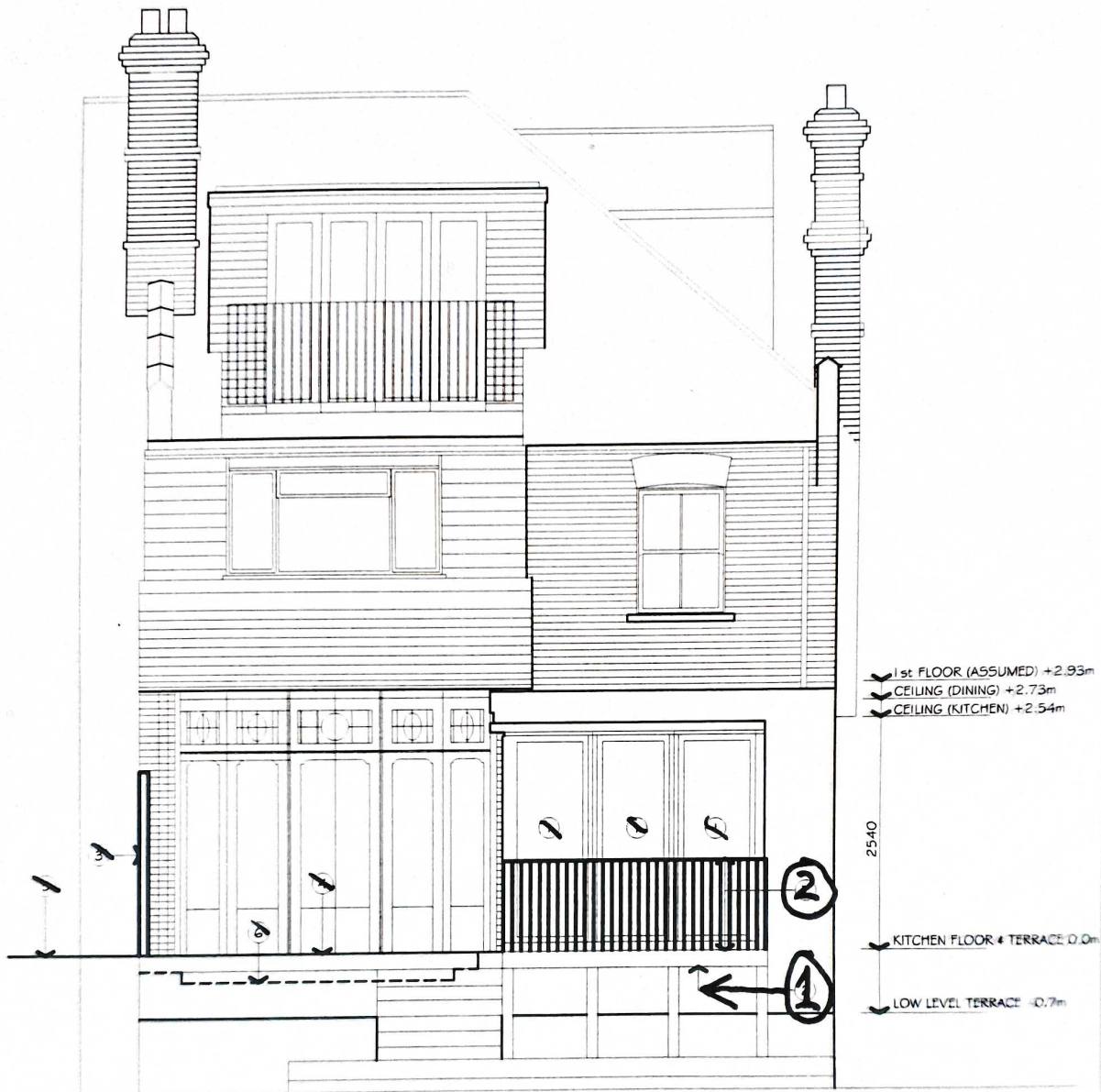


# Rear Elevation : EXISTING.



## NOTES

- ~~1. New NW timber framed glazed sliding folding window screens~~
- ~~2. New balcony structure~~
- ~~3. New 2m high fence to inside of boundary line~~
- ~~4. Terrace raised to same level as kitchen (disabled access)~~
- ~~5. Terrace level to adjacent property~~
- ~~6. Line of previous terrace~~
- ~~7. New balcony & balustrade~~
- ~~8. New timber deck structure~~
- ~~9. Line of previous terrace structure~~

① Timber frame (with doors) supporting balcony floor and balustrade.

② Balustrade

1 5m

Rear Elevation: ~~Proposed~~ EXISTING.

July 2022

Project  
50 Aylesbury Avenue, London N12

Client  
Rear Elevation

Date  
10/07/2022

Scale  
1:50

Drawn  
J. Smith

Check  
J. Smith

Rev  
1

Rev  
2

Rev  
3

Rev  
4

Rev  
5

Rev  
6

Rev  
7

Rev  
8

Rev  
9

Rev  
10

Rev  
11

Rev  
12

Rev  
13

Rev  
14

Rev  
15

Rev  
16

Rev  
17

Rev  
18

Rev  
19

Rev  
20

Rev  
21

Rev  
22

Rev  
23

Rev  
24

Rev  
25

Rev  
26

Rev  
27

Rev  
28

Rev  
29

Rev  
30

Rev  
31

Rev  
32

Rev  
33

Rev  
34

Rev  
35

Rev  
36

Rev  
37

Rev  
38

Rev  
39

Rev  
40

Rev  
41

Rev  
42

Rev  
43

Rev  
44

Rev  
45

Rev  
46

Rev  
47

Rev  
48

Rev  
49

Rev  
50

Rev  
51

Rev  
52

Rev  
53

Rev  
54

Rev  
55

Rev  
56

Rev  
57

Rev  
58

Rev  
59

Rev  
60

Rev  
61

Rev  
62

Rev  
63

Rev  
64

Rev  
65

Rev  
66

Rev  
67

Rev  
68

Rev  
69

Rev  
70