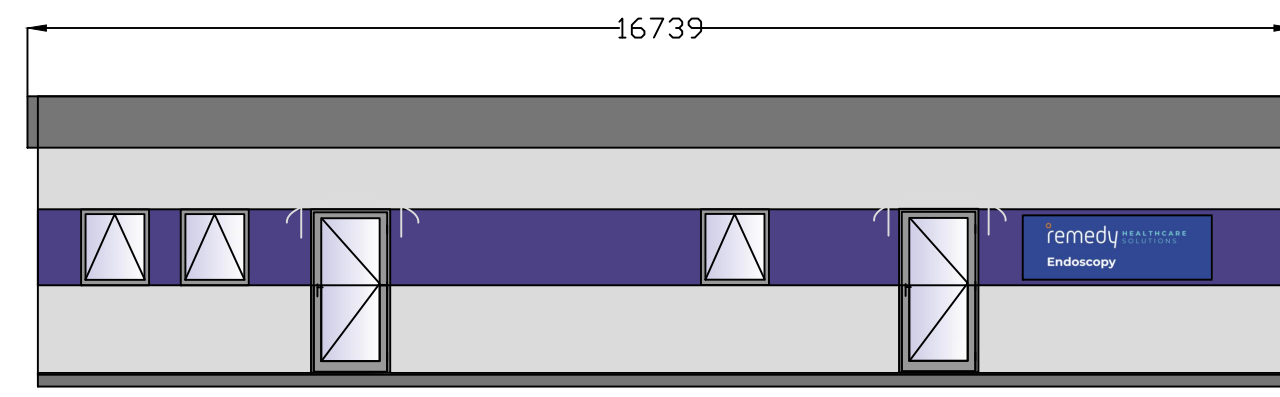
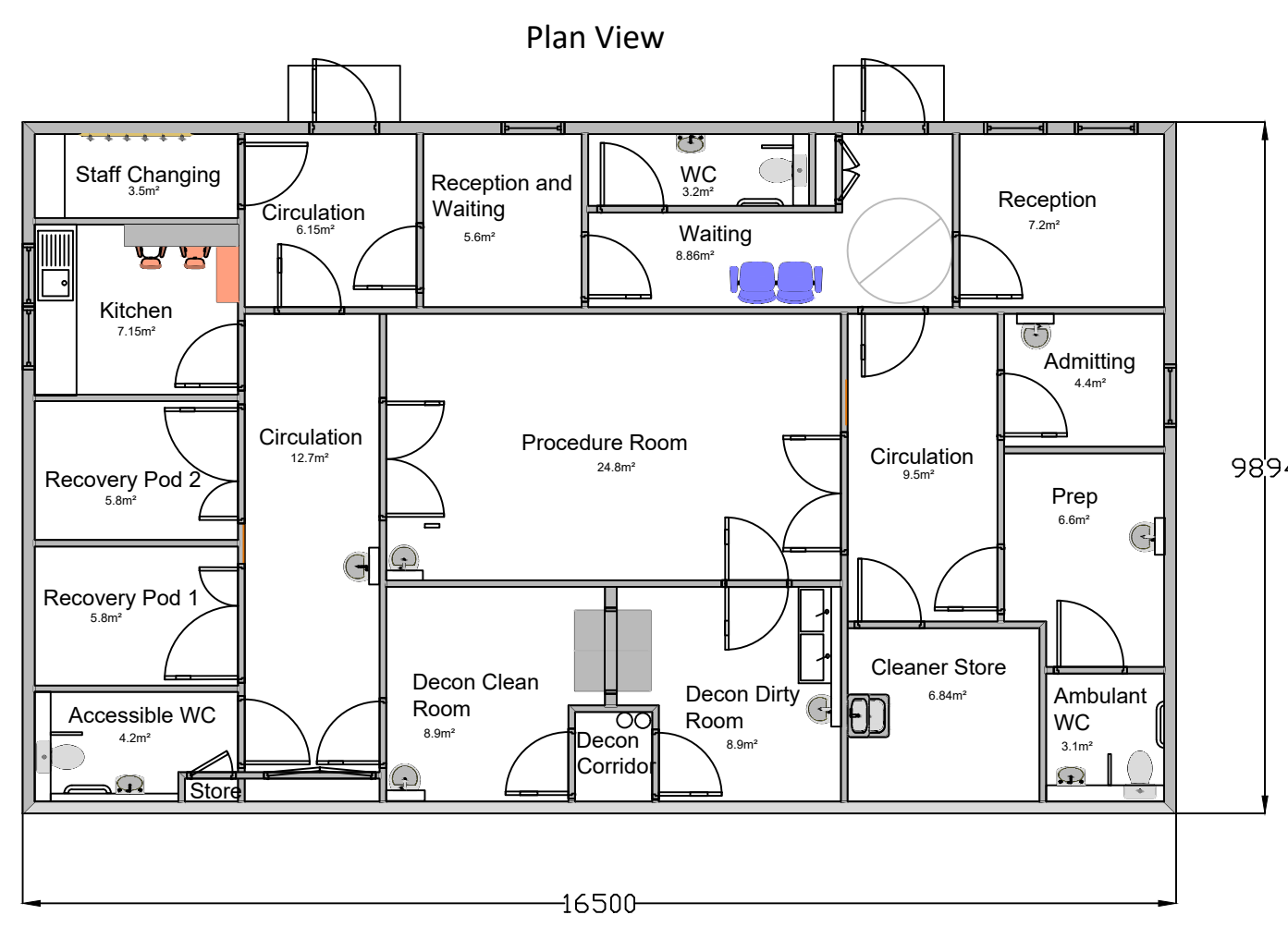


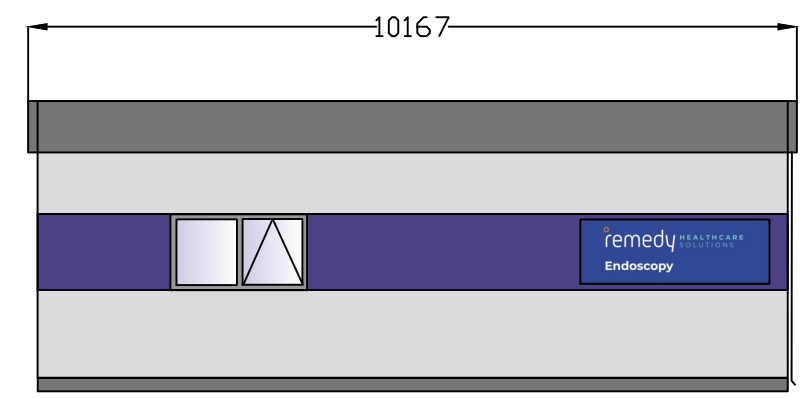
This drawing is the property of Remedy Healthcare Solutions and must not be copied or reproduced without written permission. All discrepancies or queries should be referred to Remedy Healthcare Solutions who accept no liability for any unauthorised variations made to this drawing.



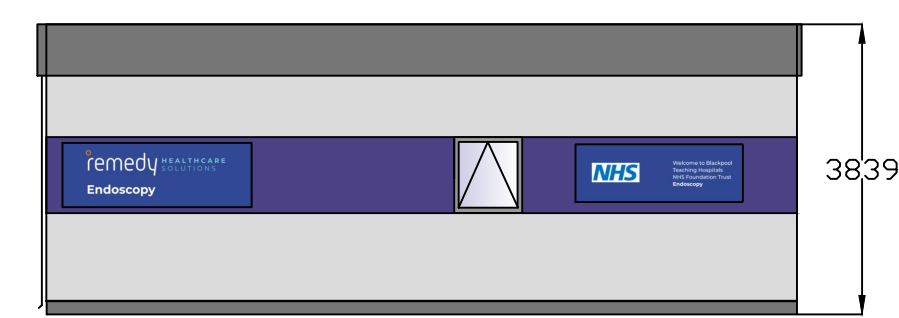
North Elevation



Plan View



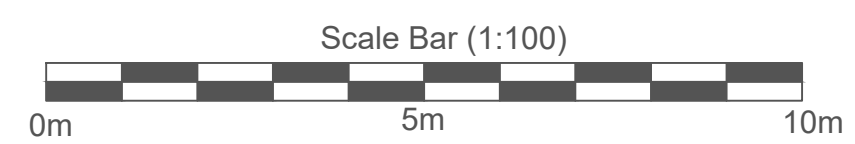
West Elevation



East Elevation



South Elevation



EXTERNAL COLOUR SCHEME

- Walls - Plastisol Steel - Goosewing Grey - Code 10A05
- Facia and Vermin Skirt - Plastisol Steel - Anthracite - RAL 7017
- Doors - Aluminium - Anthracite - RAL 7017
- Windows - Upvc - Anthracite - RAL 7017
- Remedy Health Care Brand Colour - Pantone 7672C

Notes:
Plan and Elevations of proposed modular Endoscopy Suite Building to be sited at Stanley Park Leisure Centre.

Revision History:
No Revisions



Remedy Healthcare Solutions
10 Horsted Square, Bellbrook Business Park
Uckfield, TN22 1QG.
www.remedy-healthcare.com

Client:
Remedy Healthcare Solutions in partnership with Blackpool Teaching Hospitals NHS Foundation Trust and Blackpool Council

Project:
Single Room Endoscopy Suite

Layout Title:
Plan and Elevations

Site Address:
Stanley Park Leisure Centre
West Park Drive
Blackpool
FY3 9HU

Date: 6th July 2022

Scale: 1:100@A3

Dwg No: REMSDAHBH03