

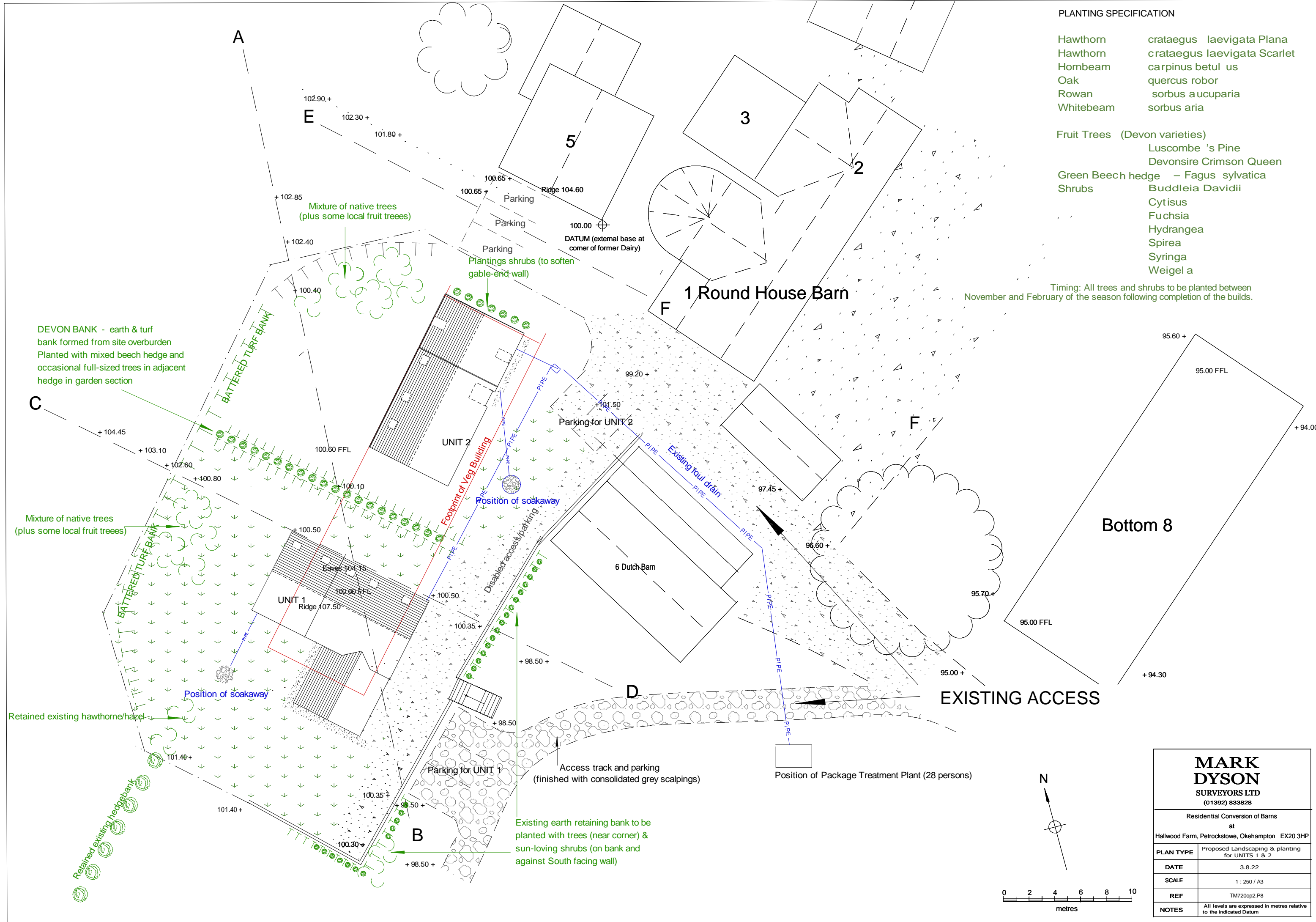
PLANTING SPECIFICATION

Hawthorn	crataegus laevigata Plana
Hawthorn	crataegus laevigata Scarlet
Hornbeam	carpinus betul us
Oak	quercus robor
Rowan	sorbus aucuparia
Whitebeam	sorbus aria

Fruit Trees (Devon varieties)	Luscombe 's Pine
	Devonsire Crimson Queen

Green Beech hedge	- Fagus sylvatica
Shrubs	Buddleia Davidii
	Cytisus
	Fuchsia
	Hydrangea
	Spirea
	Syringa
	Weigel a

Timing: All trees and shrubs to be planted between November and February of the season following completion of the builds.



DEVON BANK - earth & turf bank formed from site overburden
Planted with mixed beech hedge and occasional full-sized trees in adjacent hedge in garden section

Mixture of native trees (plus some local fruit trees)

Retained existing hawthorne/hazel

Existing earth retaining bank to be planted with trees (near corner) & sun-loving shrubs (on bank and against South facing wall)

Bottom 8

1 Round House Barn

6 Dutch Barn

MARK DYSON SURVEYORS LTD (01392) 833828	
Residential Conversion of Barns at Hallwood Farm, Petrockstowe, Okehampton EX20 3HP	
PLAN TYPE	Proposed Landscaping & planting for UNITS 1 & 2
DATE	3.8.22
SCALE	1 : 250 / A3
REF	TM720cp2.P8
NOTES	All levels are expressed in metres relative to the indicated Datum

