

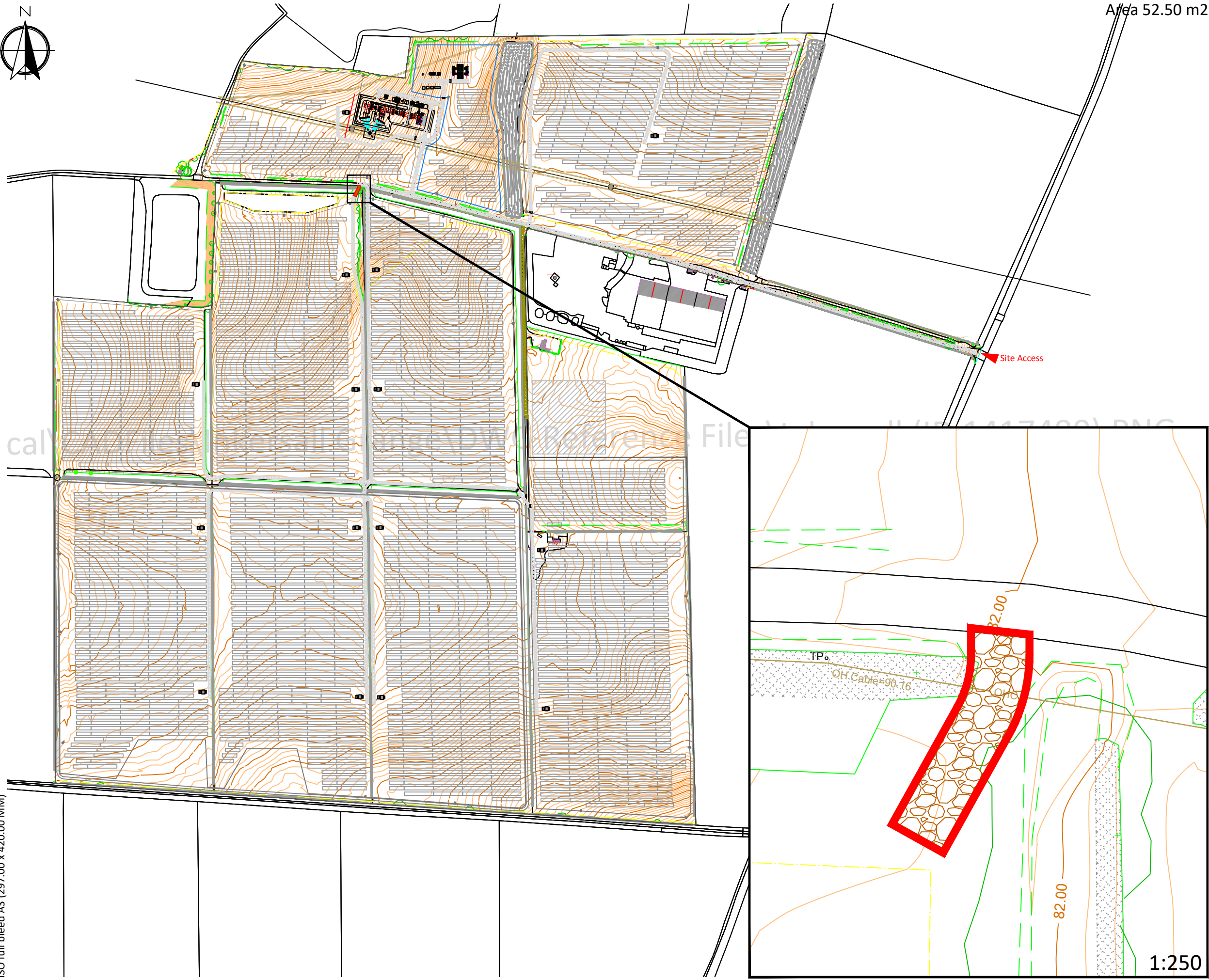


GBR\_Inkersall\_Access Layout\_00

Area 52.50 m2




	Planning Application Boundary
	Access Road



ISO full bleed A3 (297.00 x 420.00 MM)

THIS DOCUMENT IS THE PROPERTY OF LIGHTSOURCE RENEWABLE DEVELOPMENT LIMITED. IT IS PROHIBITED TO REPRODUCE IT FOR OTHER PURPOSES WITHOUT AUTHORIZATION IN WRITING.

GBR_Inkersall_Access Layout_00			
DA			13.06.2022
DRAWN	CHECKED	APPROVED	DATE
PROJECT NAME & ADDRESS: Location: Inkersall Grange Farm, Bilsthorpe, Newark Postcode: NG22 8TN			
Paper Size: A3	Scale: 1:5000	Sheet: 1	
DRAWING NUMBER: ACC_LYT		STATUS: Preliminary	
			
Lightsource Renewable Development Limited, 7th Floor, 33 Holborn, London, EC1N 2HU General: +44 (0) 333 200 0755 Web: www.lightsourcebp.com info@lightsourcebp.com			

1:250