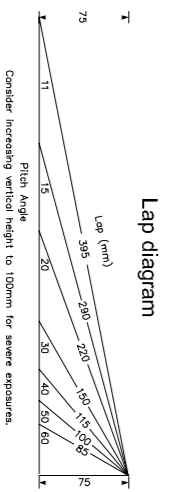
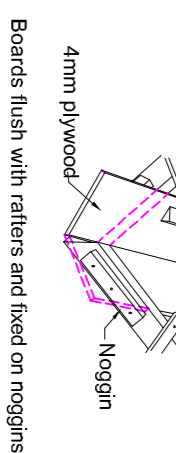


Glazing Calculation
 Ground Floor
 Total room area = 33.7m²
 25% allowance = 8.42m² + compensate existing = 2.34m²
 Total allowance = 10.76m²
 Total window area = 1.17x1.0 + 0.85x2.1 + 0.83x2.1 = 4.77m²
 therefore glazing complies.

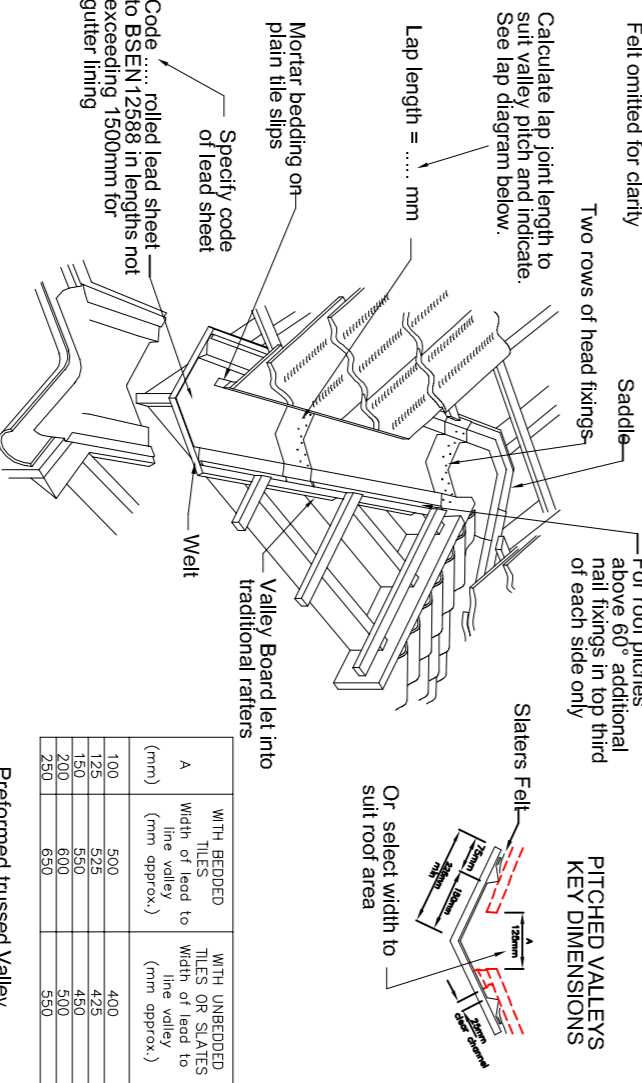
- SPECIFICATION AND DESIGN CONSIDERATIONS**
- Ensure all tilt height is at least equal to top of the system
 - Width of lining pieces will vary depending on system
 - Gutter linings minimum code 4 in lengths not exceeding 1500mm
 - Historic or Listed Building minimum of 400mm may be required to ensure tiles heavier codes of lead should be specified, to code 6 or 7.
 - Slates felt should terminate over the top of the lining pieces at the tilt height area.
 - Palmation oil: Consider use to reduce risks of staining where water from gutter materials.



Valley Detail

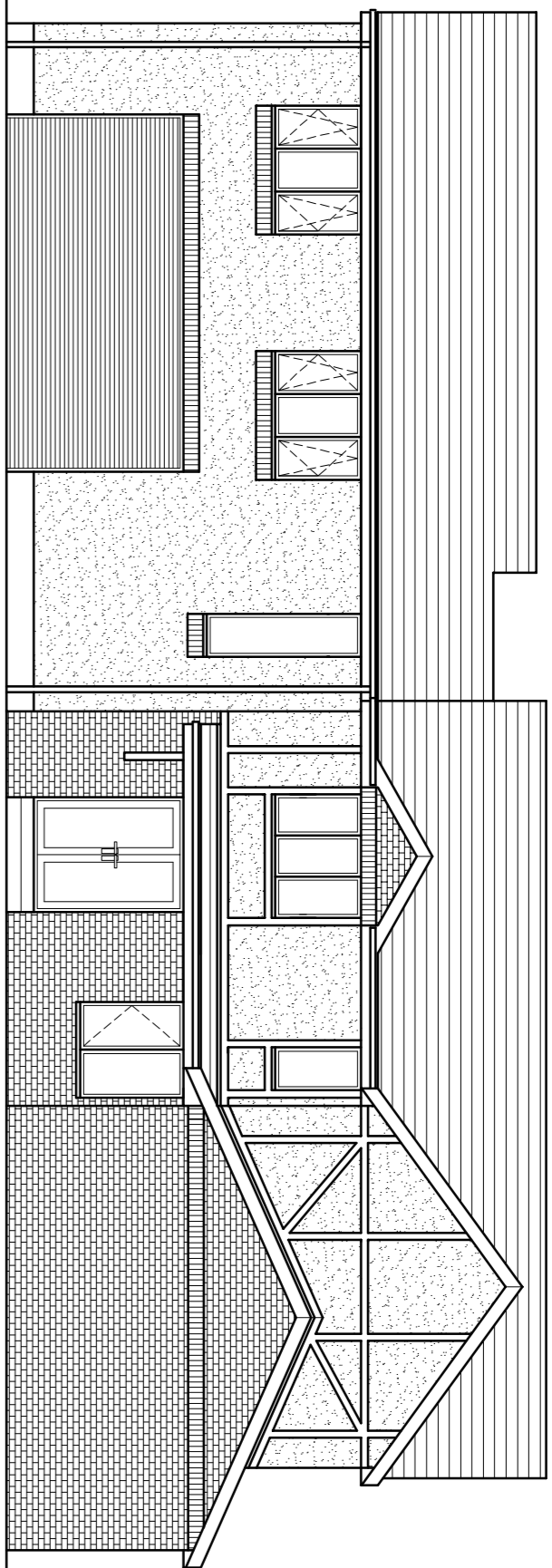
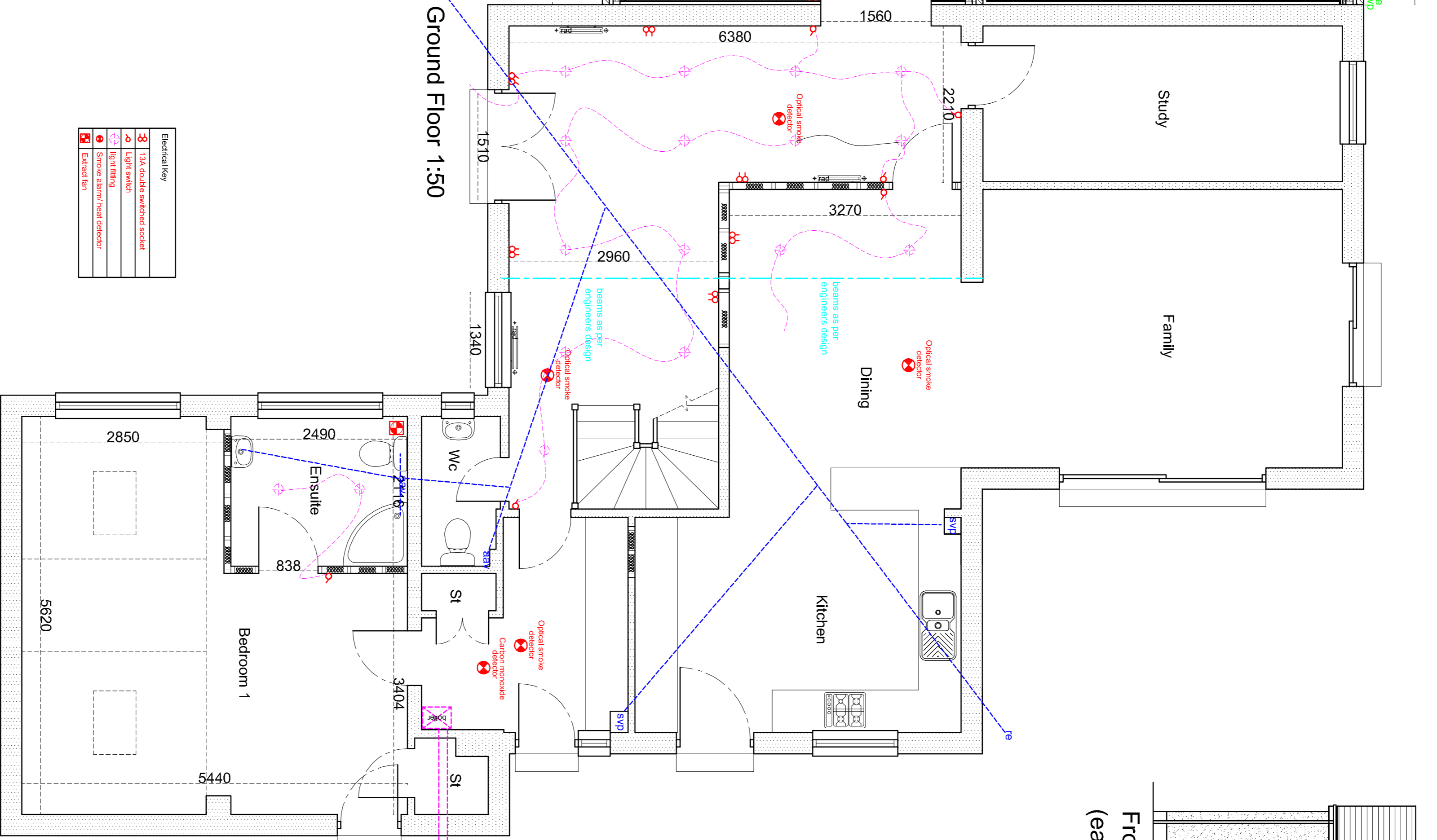


Boards flush with rafters and fixed on noggin

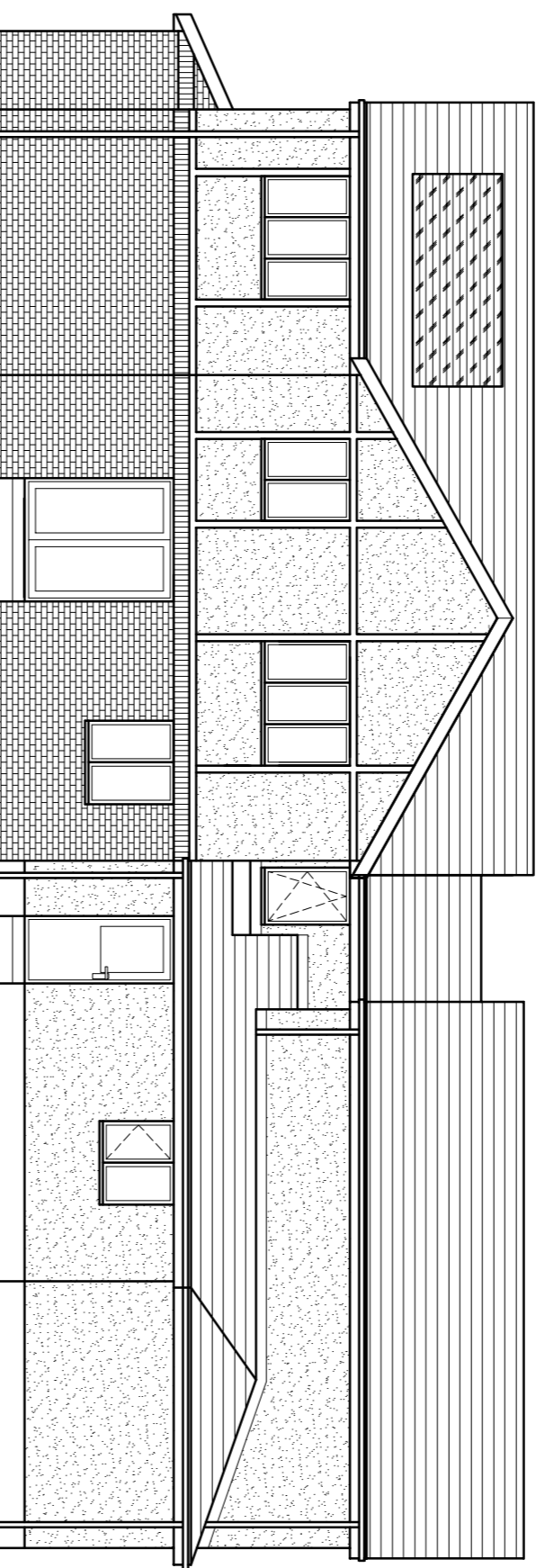


Pitched Valleys Key Dimensions	
Valley Board	1500mm
Saddle	1500mm
Head Lap	1500mm
Valley Board	1500mm
Saddle	1500mm
Head Lap	1500mm
Valley Board	1500mm
Saddle	1500mm
Head Lap	1500mm
Valley Board	1500mm
Saddle	1500mm
Head Lap	1500mm

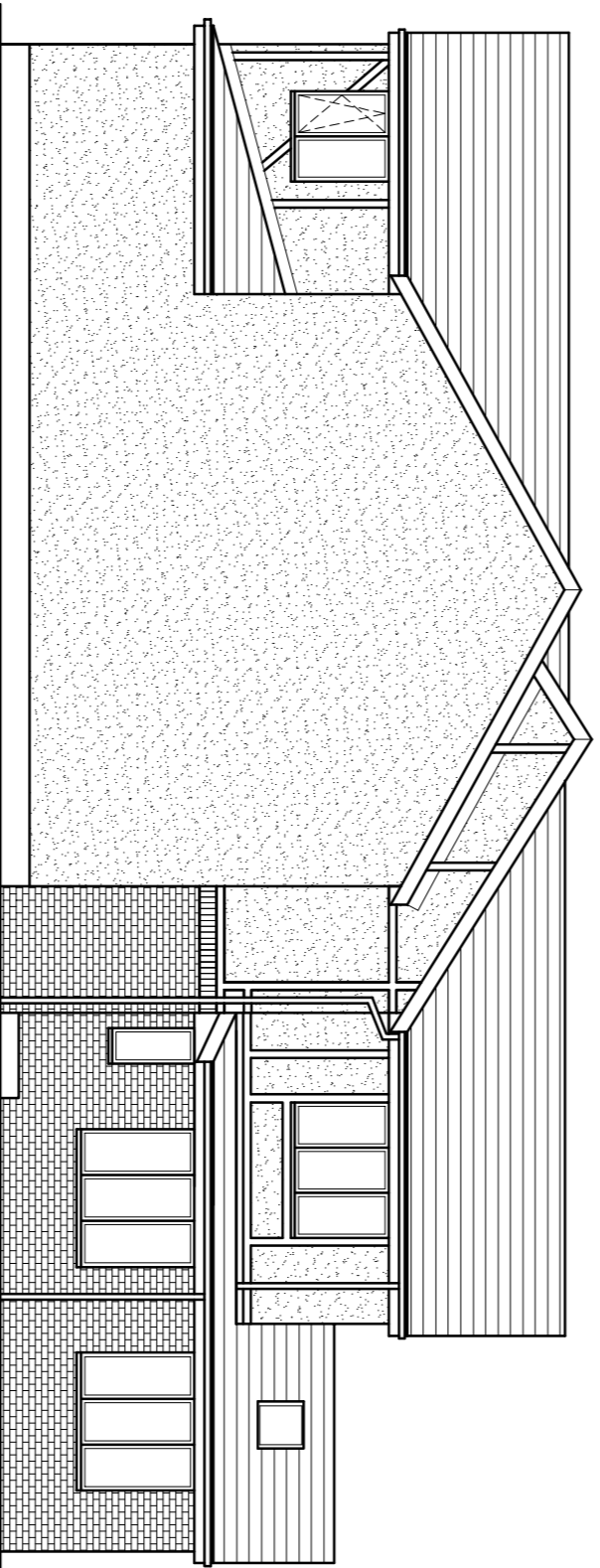
Electrical Key	
1	13A socket outlet
2	Light switch
3	Light fixture
4	Socket outlet
5	Socket outlet
6	Socket outlet
7	Socket outlet
8	Socket outlet
9	Socket outlet
10	Socket outlet
11	Socket outlet
12	Socket outlet
13	Socket outlet
14	Socket outlet
15	Socket outlet
16	Socket outlet
17	Socket outlet
18	Socket outlet
19	Socket outlet
20	Socket outlet
21	Socket outlet
22	Socket outlet
23	Socket outlet
24	Socket outlet
25	Socket outlet
26	Socket outlet
27	Socket outlet
28	Socket outlet
29	Socket outlet
30	Socket outlet
31	Socket outlet
32	Socket outlet
33	Socket outlet
34	Socket outlet
35	Socket outlet
36	Socket outlet
37	Socket outlet
38	Socket outlet
39	Socket outlet
40	Socket outlet
41	Socket outlet
42	Socket outlet
43	Socket outlet
44	Socket outlet
45	Socket outlet
46	Socket outlet
47	Socket outlet
48	Socket outlet
49	Socket outlet
50	Socket outlet
51	Socket outlet
52	Socket outlet
53	Socket outlet
54	Socket outlet
55	Socket outlet
56	Socket outlet
57	Socket outlet
58	Socket outlet
59	Socket outlet
60	Socket outlet
61	Socket outlet
62	Socket outlet
63	Socket outlet
64	Socket outlet
65	Socket outlet
66	Socket outlet
67	Socket outlet
68	Socket outlet
69	Socket outlet
70	Socket outlet
71	Socket outlet
72	Socket outlet
73	Socket outlet
74	Socket outlet
75	Socket outlet
76	Socket outlet
77	Socket outlet
78	Socket outlet
79	Socket outlet
80	Socket outlet
81	Socket outlet
82	Socket outlet
83	Socket outlet
84	Socket outlet
85	Socket outlet
86	Socket outlet
87	Socket outlet
88	Socket outlet
89	Socket outlet
90	Socket outlet
91	Socket outlet
92	Socket outlet
93	Socket outlet
94	Socket outlet
95	Socket outlet
96	Socket outlet
97	Socket outlet
98	Socket outlet
99	Socket outlet
100	Socket outlet



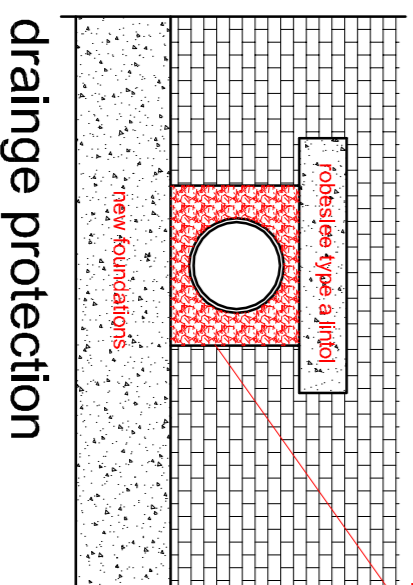
Front 1:100 (east elevation)



Rear 1:100 (west elevation)

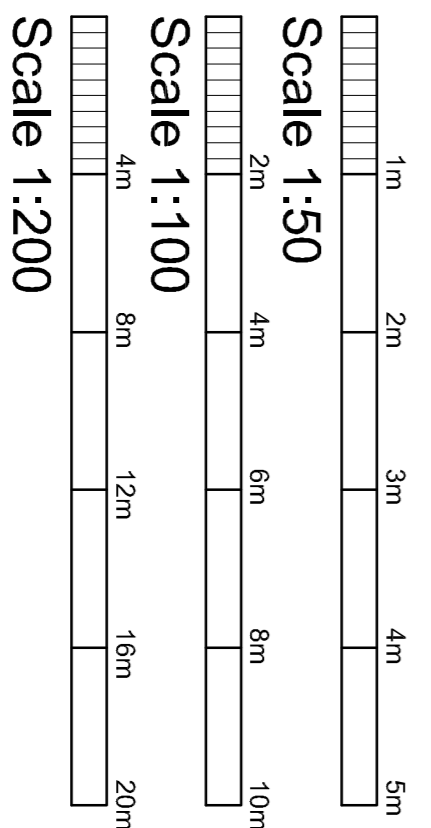


Side 1:100 (south elevation)



drainage protection

fanclashes are to be taken below the level of the roof and are to be placed over the opening and 150mm bed gravel is to be filled around the exposed pipe.



Project:	Wf Kerr 8 Barassie Crescent Cumbernauld, G68 0HP
Scale:	1:50/1:100
Date:	28/07/22
Rev:	
Proposed	
bra03ext	