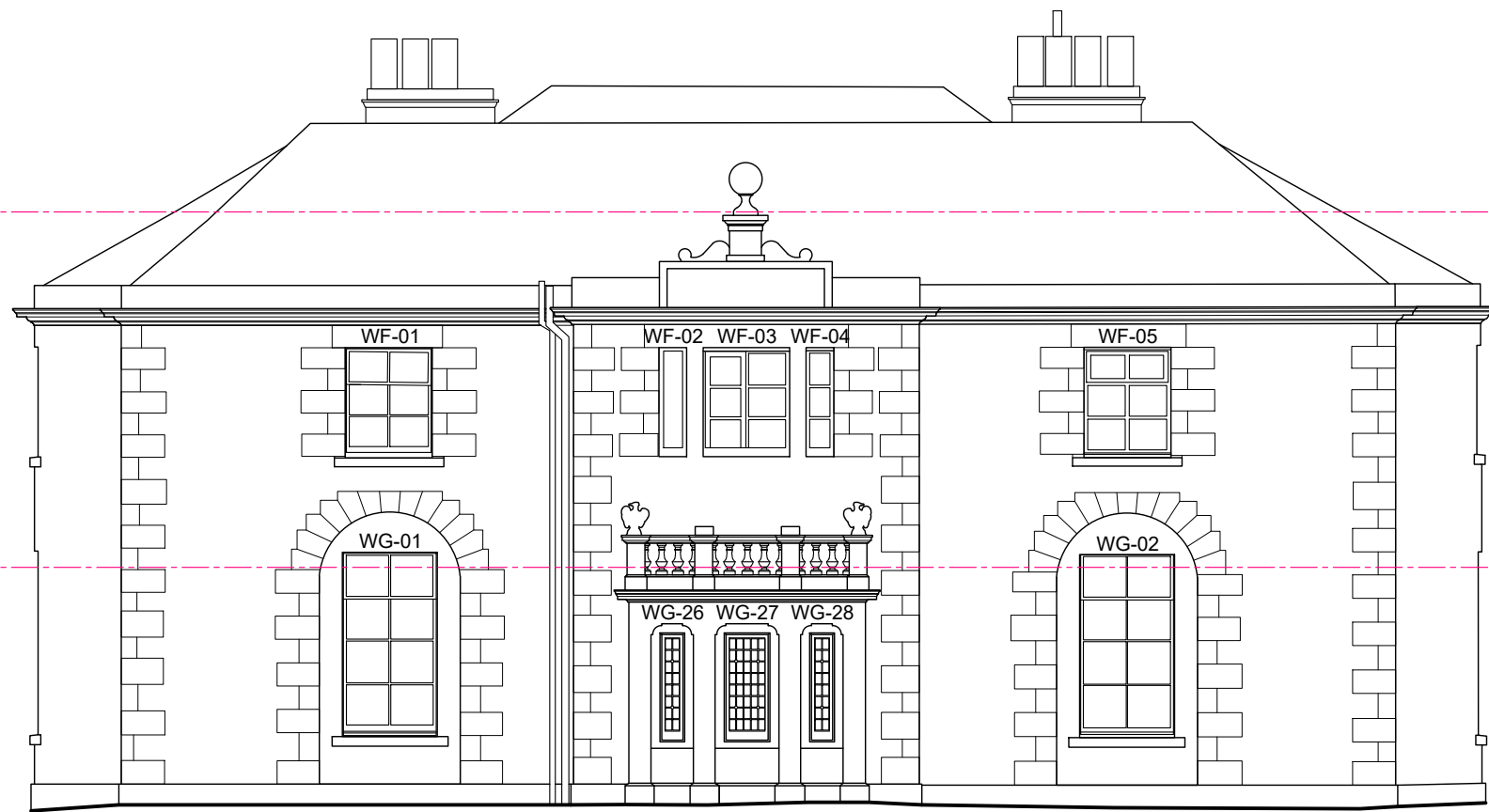
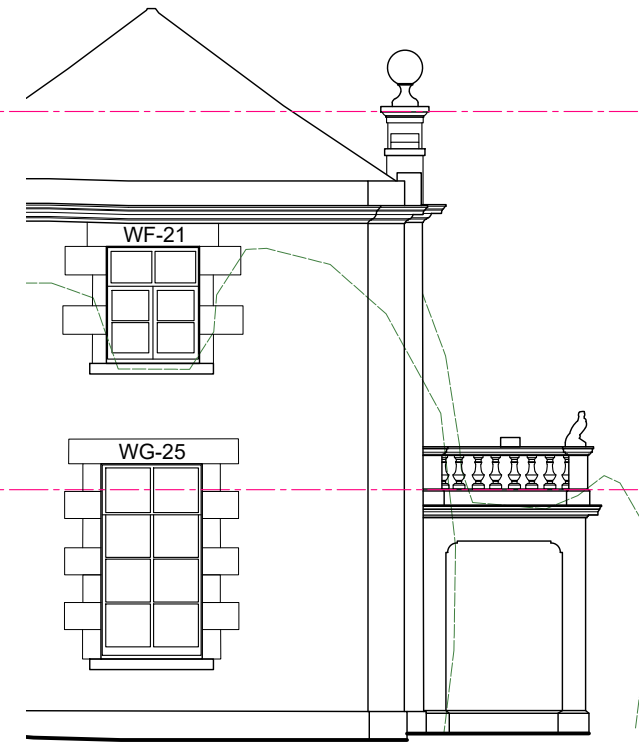


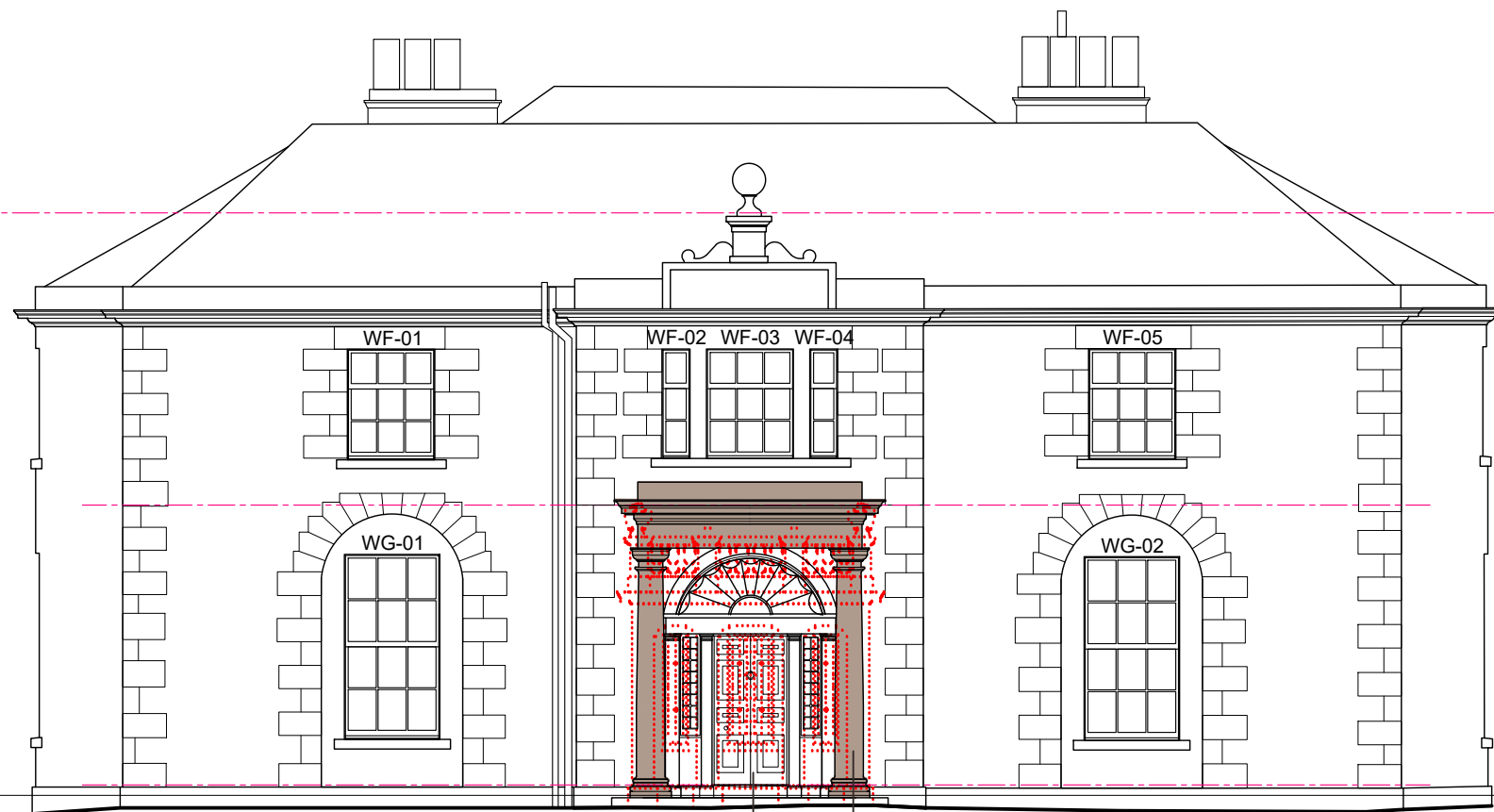
Notes :



existing south elevation

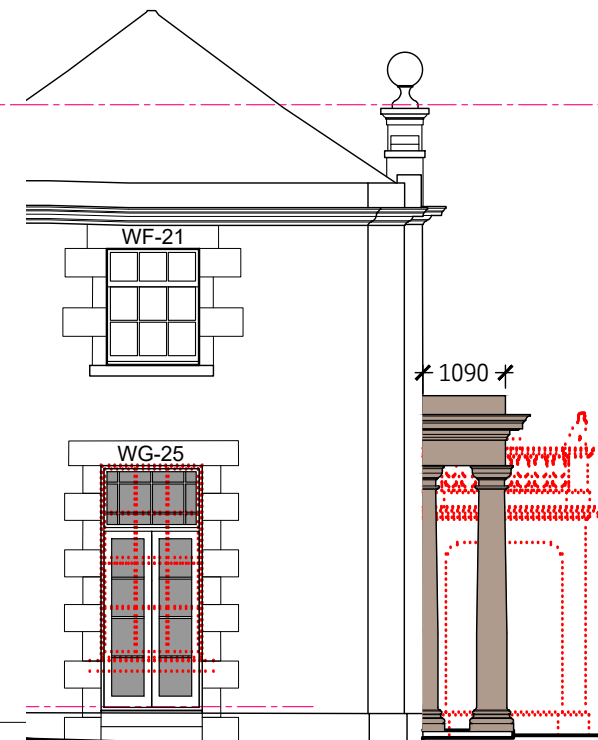


existing west elevation



proposed south elevation

New portico, with stone columns, engaged pilasters and pediment around doorway. Stone to match finial.  
Existing door and fanlight to be retained and repaired



proposed west elevation

**⚠ CDM Regulations 2015:**  
The designs on this drawing and all drawings relating to it have been prepared with due consideration of the need to identify hazards and give regard to their elimination or minimization. Remaining hazards are noted on this drawing where applicable.

| Rev | Date | Revision | By |
|-----|------|----------|----|
|     |      |          |    |

Client:  
Guy Goodfellow

Project:  
**Biggar Park House**  
Biggar  
ML12 6JS

Title:  
Proposed Portico to South Elevation

|                              |                 |                      |
|------------------------------|-----------------|----------------------|
| Issue Status:<br>FOR COMMENT | Scale:<br>1:100 | Original Size:<br>A3 |
|------------------------------|-----------------|----------------------|

|                      |                   |                   |
|----------------------|-------------------|-------------------|
| Date:<br>AUGUST 2022 | Drawn by:<br>NMCA | Checked by:<br>HB |
|----------------------|-------------------|-------------------|

|                             |                                |                                   |          |
|-----------------------------|--------------------------------|-----------------------------------|----------|
| Project No:<br><b>E3619</b> | Stage:<br>4 - Technical Design | Drawing No:<br><b>G- (2-) 007</b> | Rev:<br> |
|-----------------------------|--------------------------------|-----------------------------------|----------|

20 Torphichen Street, Edinburgh, Scotland, EH3 8JB  
Phone +44 (0)131 225 4235 Fax +44 (0)131 220 0499  
enquiries@weareglm.com  
www.weareglm.com  
©GLM

