

PROPOSED FASCIA SIGN SECTION 1:20

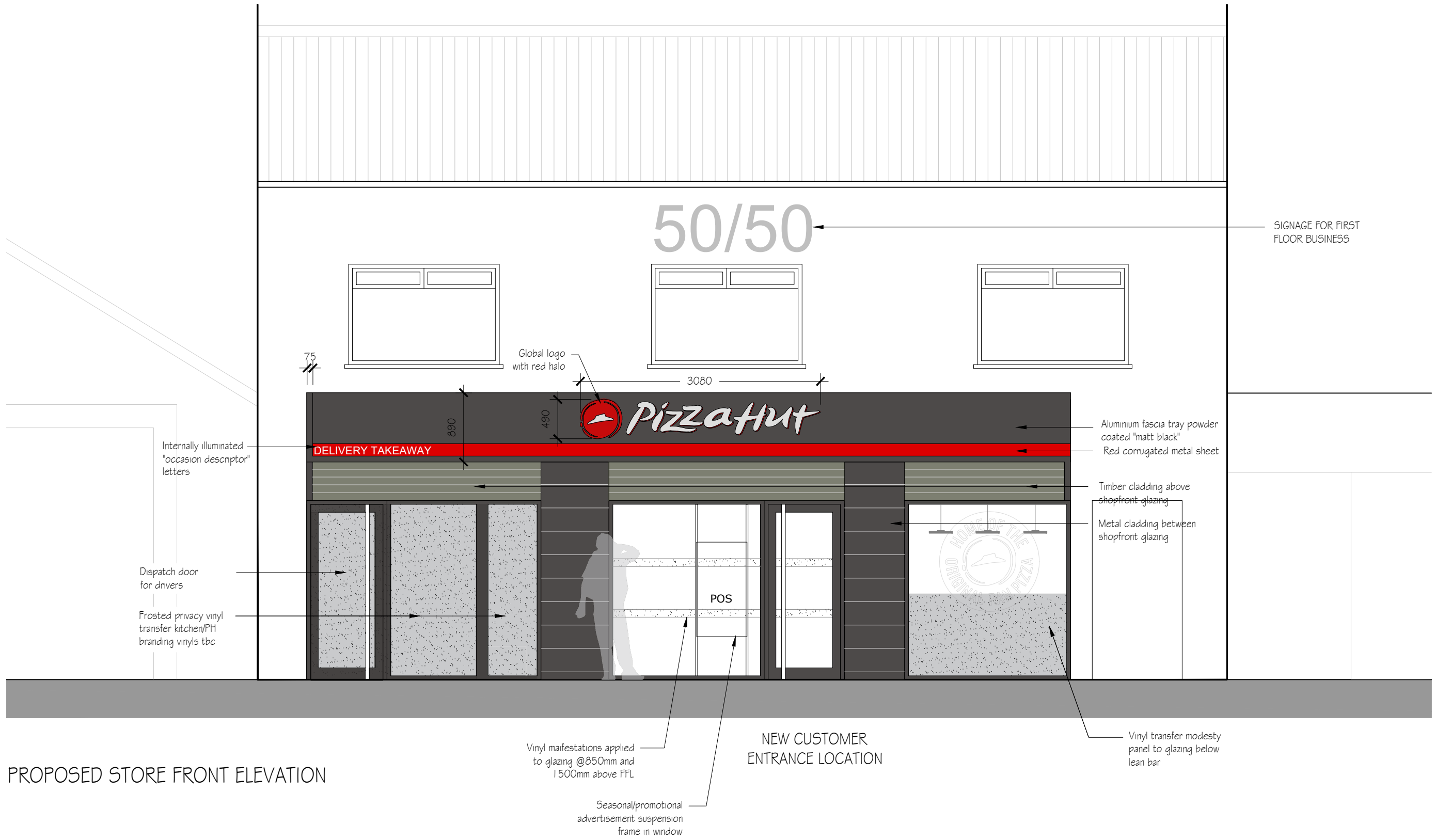
NEW FASCIA SIGN

New fascia signage constructed of a 100mm deep folded aluminum fascia panel power-coated matt black. Bottom of fascia panel to have a recessed red corrugated aluminum panel power-coated red as detailed above. New up and down lighting fabricated trough light to run the full length of the fascia sign and to be a 75x75mm section, opal acrylic lenses required but to illuminate via red leds within.

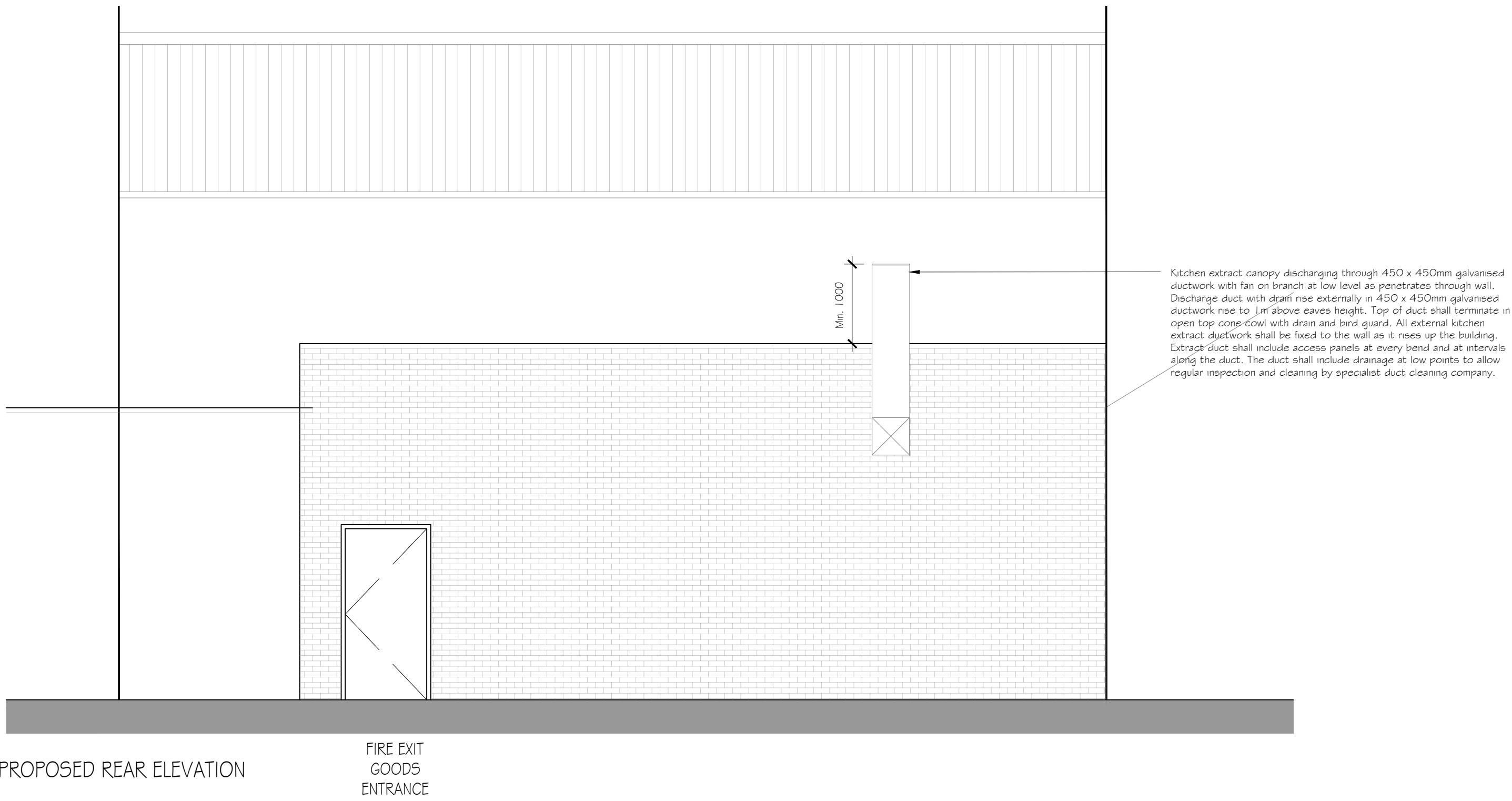
'DELIVERY TAKE AWAY' letters from individual internally illuminated built-up letters at 120mm high.

'PIZZA HUT' logotype from built-up aluminum letters and logo with 90mm returns and fitted to the main fascia panel with stand-off locators, logotype to face illuminate and also halo illuminate onto the panel in red.

NOTE: All new glazing to be double glazed with aluminum frames powder coated RAL 7021. Glazing below 850mm to be safety glass. All dimensions TBC on site by MC



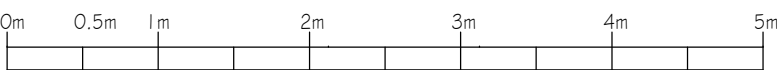
PROPOSED STORE FRONT ELEVATION



PROPOSED REAR ELEVATION

FIRE EXIT
GOODS
ENTRANCE

PROPSOED ELEVATIONS 1:50



REVISION		DATE	CHECKED	DATE	REVISION		DATE	CHECKED	DATE
A					E				
B					F				
C					G				
D					H				

CLIENT				
Gotham Newco LTD				
JOB TITLE				
PIZZA HUT, CARDONALD				
SCALE	DRAWN	DATE	CHECKED	DATE
1:50 @ A1 / 1:100 @ A2	LAM	26.03.22		

DRAWING TITLE							
PROPOSED ELEVATIONS SIGNAGE DETAIL							
A	B	C	D	E	F	G	H
747				A4- 01			

G

gormack

gracie architects

Studio 2008

Mile End, 12 Seedhill Road

Paisley, PA1 1JS

Tel: 0141 849 6000

Fax: 0141 849 6262

Architects • Interior Designers • Space Planning • Project Managers