

**ELECTRICAL LEGEND:**

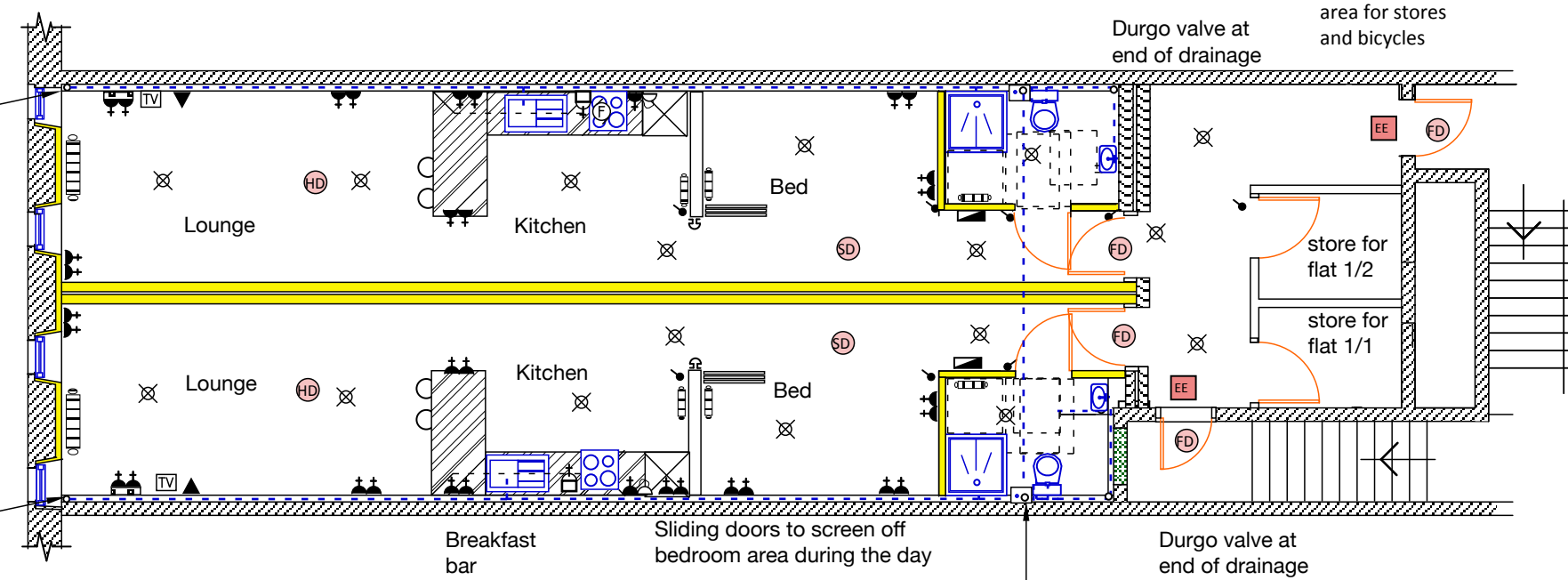
- Double switch socket
- Switch with remote spur
- Double switch socket with internet socket
- Light Fixture ceiling...flush
- Light switch
- Bulkhead Light Fixture ... PIR
- Clng. Mounted "J" Box For Fan/light
- Extract Fan
- Tv Outlet
- Telephone Outlet
- 1hr s/c fire door, intumescent strip
- Smoke Detector ... hard wired
- Heat Detector ... hard wired
- Carbon Monoxide ... hard wired
- Radiator electric 2kw with control .
- Door bell...electric
- Door bell push
- Cooker control unit
- Electric consumer unit
- Emergency exit sign

Separating wall cloured yellow

Existing drainage pipe 100mm dia.

Replace all windows to flatted accommodation

Existing drainage pipe 100mm dia.



**SECOND FLOOR PLAN ... services layout**

Access stairwell in blockwork with PC concrete steps from ground floor to 2nd floor with 1hour fire doors at each level and emergency exit signs throughout. No combustible materials in any part of the stairwell construction.

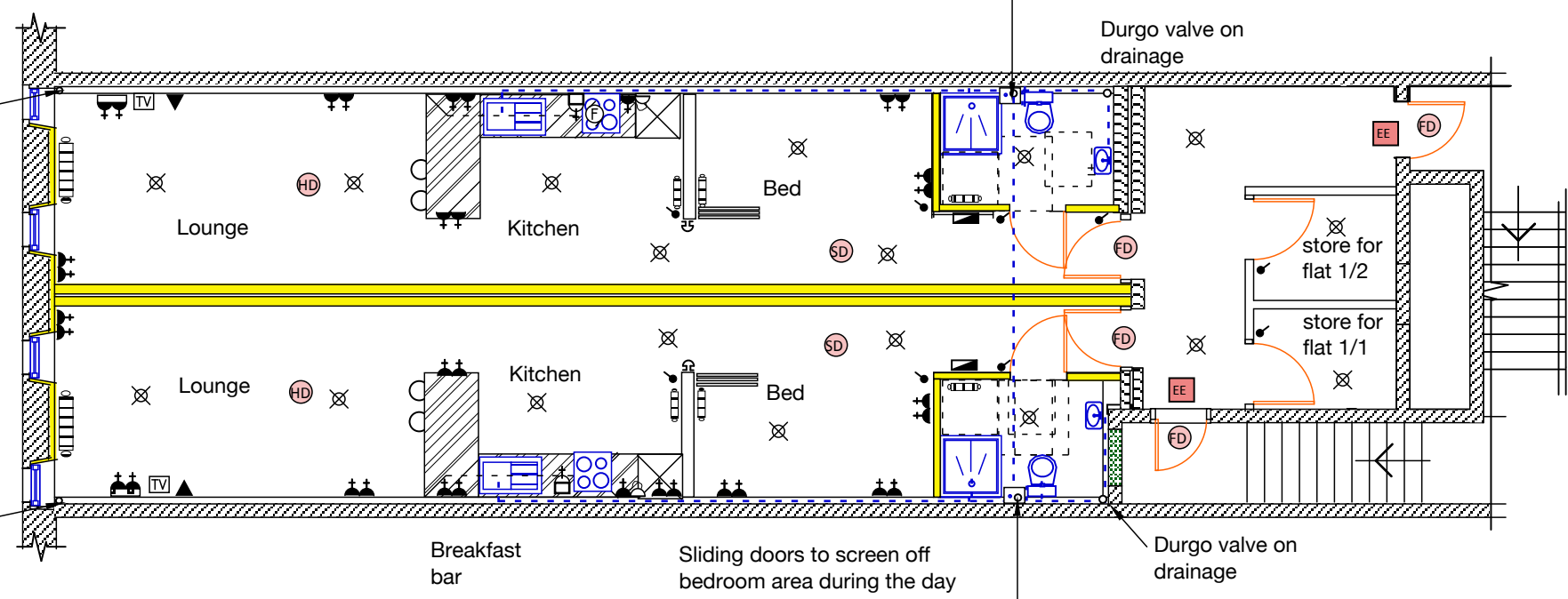
100mm combined drain drop through concrete floor then cross over within the suspended ceiling area at ground floor Insulate all pipework and fit intumescent seal below floor levels.

100mm mains drain pipe fall to GF and water main riser within boxing.

Existing drainage pipe 100mm dia.

Replace all windows to flatted accommodation with double glazed aluminium frame units to match existing in style and have black finish.

Existing drainage pipe 100mm dia.



**FIRST FLOOR PLAN ... services layout**

Access stairwell in blockwork with PC concrete steps from ground floor to 2nd floor with 1hour fire doors at each level and emergency exit signs throughout. No combustible materials in any part of the stairwell construction.

100mm combined drain drop through concrete floor then cross over to flat 1/2 within the suspended ceiling area at first floor. Install fire seal round pipe under concrete floor

Scale:- 1 : 100



Client	Woodside PO & Convenience Store Ltd	Address	14 Stockwell Street, Glasgow
Project	COU conversion to studio apartments	Dwg	A1514.22.08
Title	FF/SF Plans ... services	Date	22.06.22
		Scale	1:100

KEITH EDWARDS ARCHITECT

2 CALEDON STREET, GLASGOW

G12 9DX tel : 0141 341 0694