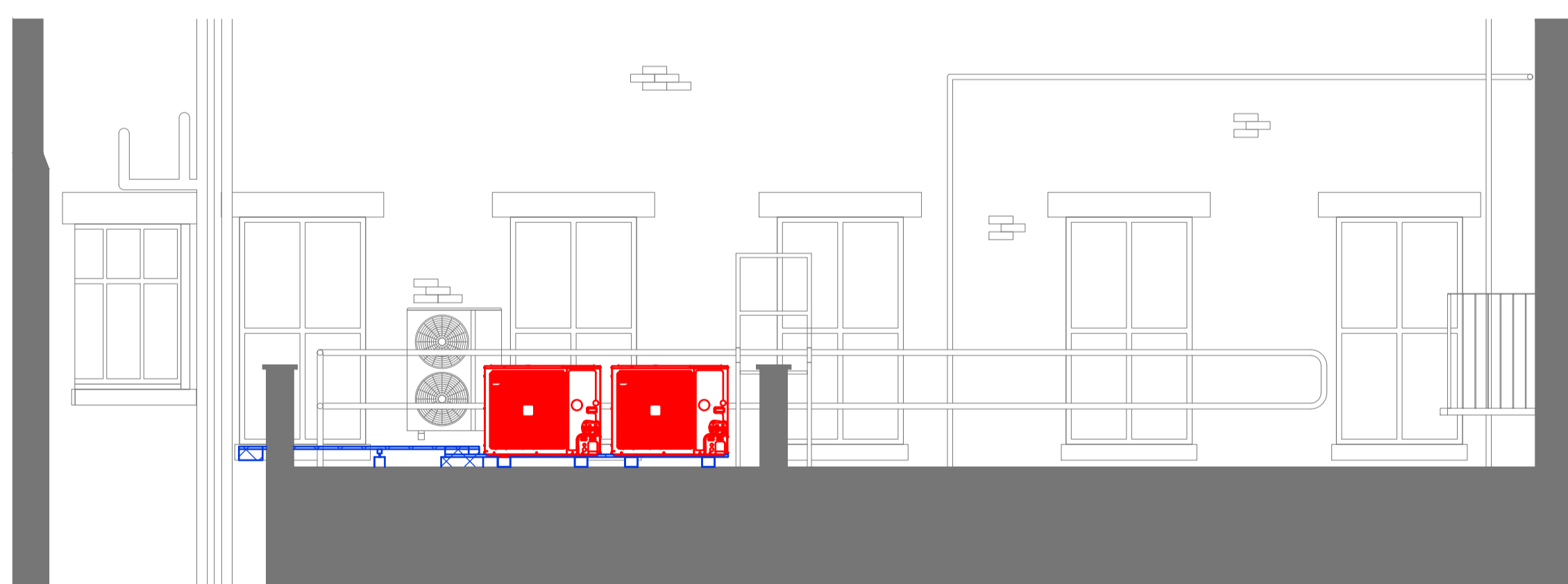
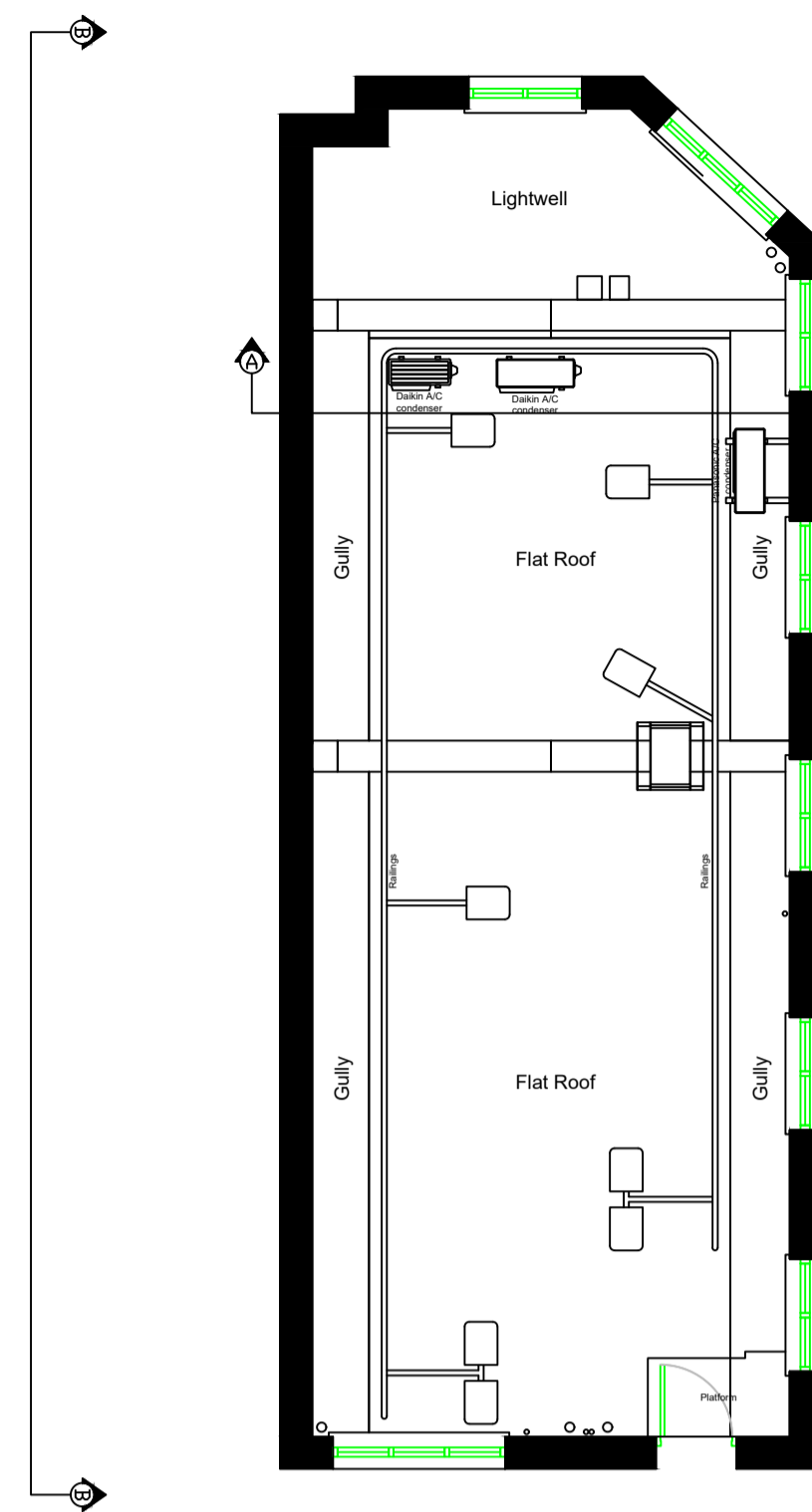


Section A-A



Section B - B

				RZAG100N7Y1B (x1)	RZAG140N7Y1B (x3)	
Dimensions	Unit	Height	mm	870	870	
		Width	mm	1,100	1,100	
		Depth	mm	460	460	
Weight	Unit		kg	85	94	
Compressor	Type			Hermetically sealed swing compressor	Hermetically sealed swing compressor	
	Operation range	Cooling	Ambient	Min. °CDB	-20	-20
				Max. °CDB	52	52
		Heating	Ambient	Min. °CWB	-20	-20
				Max. °CWB	18	18
Sound power level	Cooling			dB(A)	66	70
	Heating			dB(A)		71 (1)
Sound pressure level	Cooling		Nom.	dB(A)	47	50
	Heating		Nom.	dB(A)	50	52
Refrigerant	Type			R-32	R-32	
	Charge			kg	3.20	3.70
				TCO2Eq	2.16	2.50
Piping connections	GWP			675	675	
	Liquid	OD	mm	9.52	9.52	
	Gas	OD	mm	15.9	15.9	
Piping length		OU - IU	Max. m	85	85	
		System	Equivalent m	100	100	
			Chargeless m	40	40	
Additional refrigerant charge			kg/m	See installation manual	See installation manual	
	Level difference	IU - OU	Max. m	30	30	
		IU - IU	Max. m	0.5	0.5	
Standard Accessories	Tie-wraps			2	2	
	Installation manual			1	1	
	General safety precautions			1	1	
	Peel off F-gas label			1	1	
	Refrigerant label for F-gas regulation			1	1	
Power supply	Phase			3~	3~	
	Frequency		Hz	50	50	
	Voltage		V	380-415	380-415	
Current - 50Hz	Maximum fuse amps (MFA)			16	16	
Notes				(1) - According to ENER Lot 21	(1) - According to ENER Lot 21	

**Notes/Legend**

- Do Not Scale.
- Cabinet setting out dimensions are based on customer information.
- All Dimensions are to be checked on site prior to installation.
- Cabinet, Coldroom and Plant installers are to check site access prior to installation.
- Refrigeration layout, pipework and drainage requirements are indicative only and subject to change to reflect updated layouts and on site conditions.

INDICATIVE ONLY

**Revision Details**

Rev	Date	Drawn/Checked	MW/XXX
1	04/07/22		

First Issue

**Un-Controlled Document**

**For Approval**

Drawing No.	Rev	Scale (A1)
21.01456-1	1	1:50 / NTS

**Client**

Pret a Manger  
163 Picadilly

**Proposed AC Plant Layout Plan & Elevations**

**Epta**

EPTA-UK  
Avonside House, Kingfisher Park,  
Headlands Business Park, Blashford,  
Ringwood, Hampshire  
BH24 3JX  
Tel: 01425 485700  
Fax: 01425 485701

