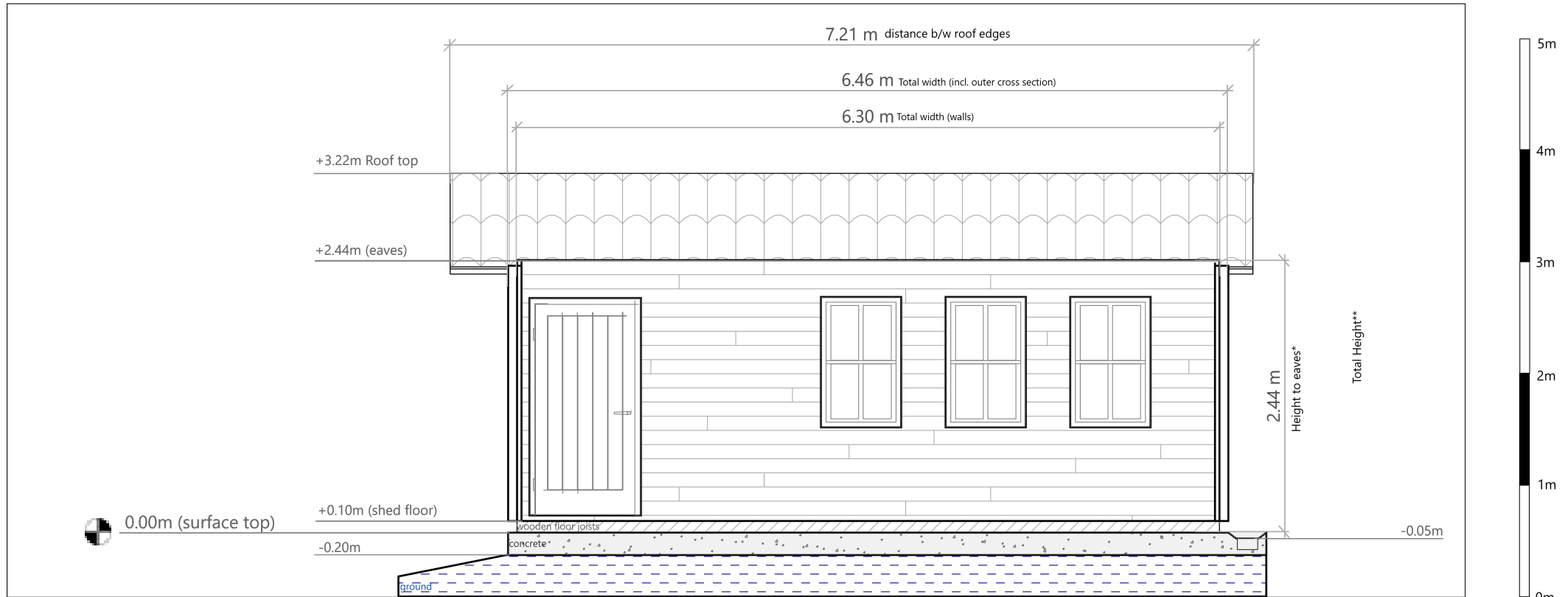
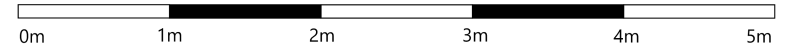


Application for Shed Installation at 2 Hardhill Steading, Hatton, Peterhead

South-East Elevation



no change in ground levels are proposed



Scale 1:50, paper size: A4

Notes:

- * Height to eaves includes foundation joists of approx. 100mm
- ** Total height includes foundation joists of approx. 100mm
- Existing Ground Levels and Concrete Surface shown