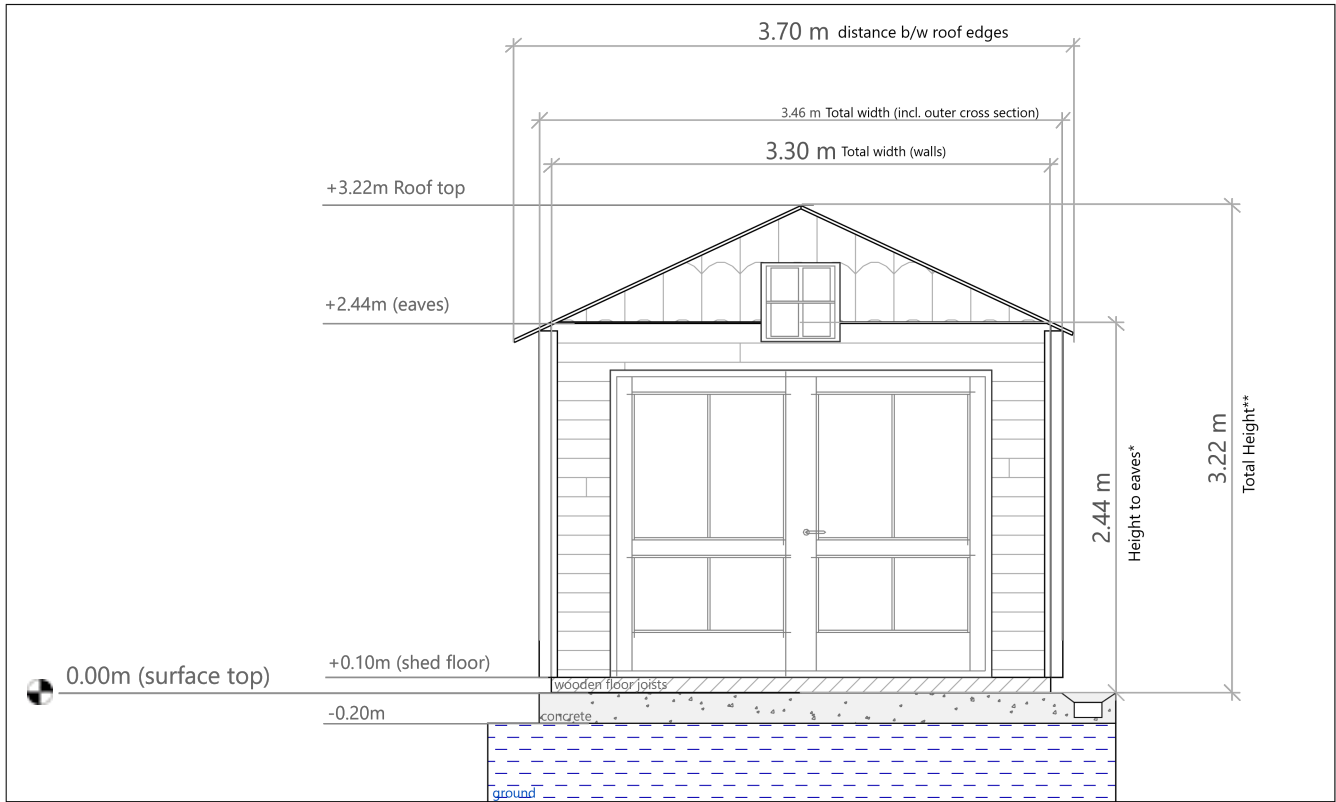
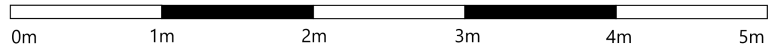


Application for Shed Installation at 2 Hardhill
Steading, Hatton, Peterhead

-
South-West Elevation



no change in ground levels are proposed



Scale 1:50, paper size: A4

Notes:
* Height to eaves includes foundation joists of approx. 100mm
** Total height includes foundation joists of approx. 100mm
- Existing Ground Levels and Concrete Surface shown