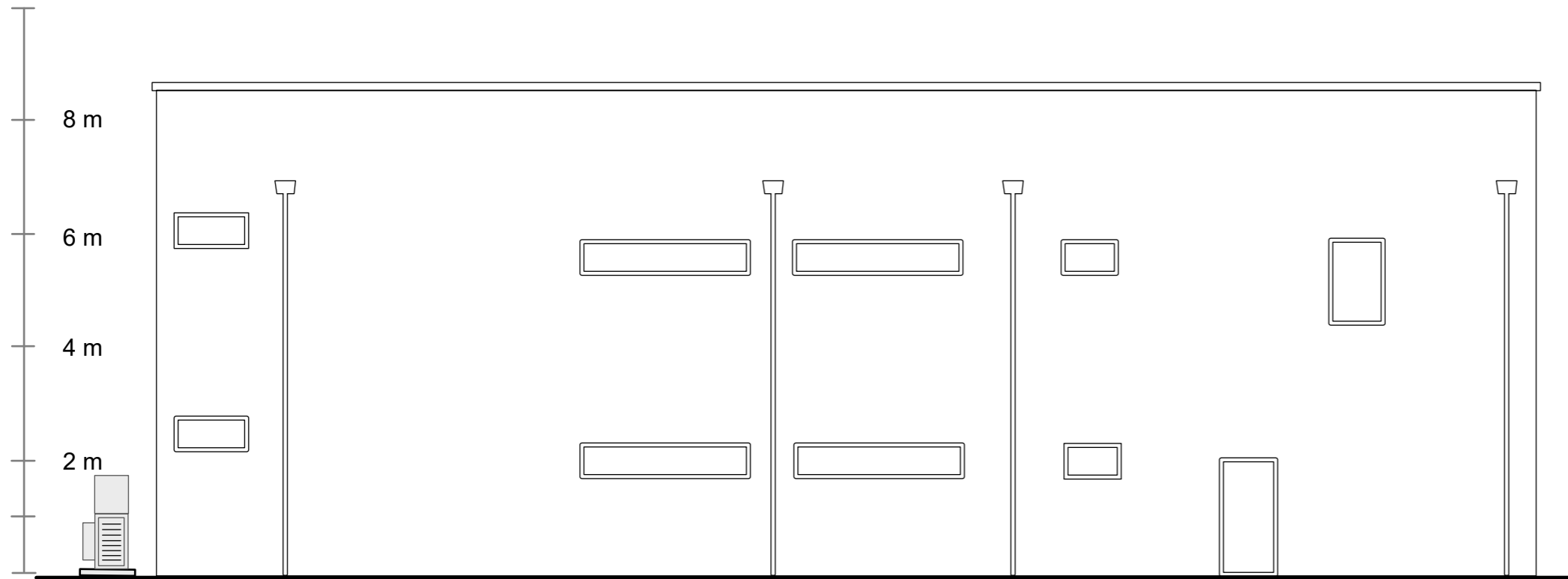


Note:

Do not scale this drawing for construction and ordering.

Actual dimensions to be confirmed on site with approved contractors and verified by Ambient Acoustic Limited.

All intellectual property rights reserved to AEC.



170 mm  
2 x Condenser Units with  
Acoustic Enclosures erected  
above an existing concrete pad

←  
Towards Cricklewood Railway Station

→  
Towards Brent Cross West Station



CHARTERED TOWN PLANNERS ARCHITECTS SUSTAINABLE DEVELOPMENT

Directors: G Amos Dip Arch (Oxf) Dip UD MA RIBA MRTPI and C Ellis BA (Hons.)  
Registered Architect 059857G 198 High Street Tonbridge TN9 1BE Company No 9385456

Proposed Acoustic Enclosures for  
two Condenser Units  
at the Train Operating Companies' Building  
Cricklewood Sidings Brent Terrace NW2 1LN  
for London Borough of Barnet

Drawn by: SV	Date: 27/05/2022	Check: GA	Date: 27/5/22	Authorised by: GA	Date: 27/5/22
--------------	------------------	-----------	---------------	-------------------	---------------

Dwg Title: <b>Proposed North Eastern Elevation</b>	Scale at A3: <b>1:100</b>	Dwg Number: <b>BXW/SDGS/003</b>
---	------------------------------	------------------------------------