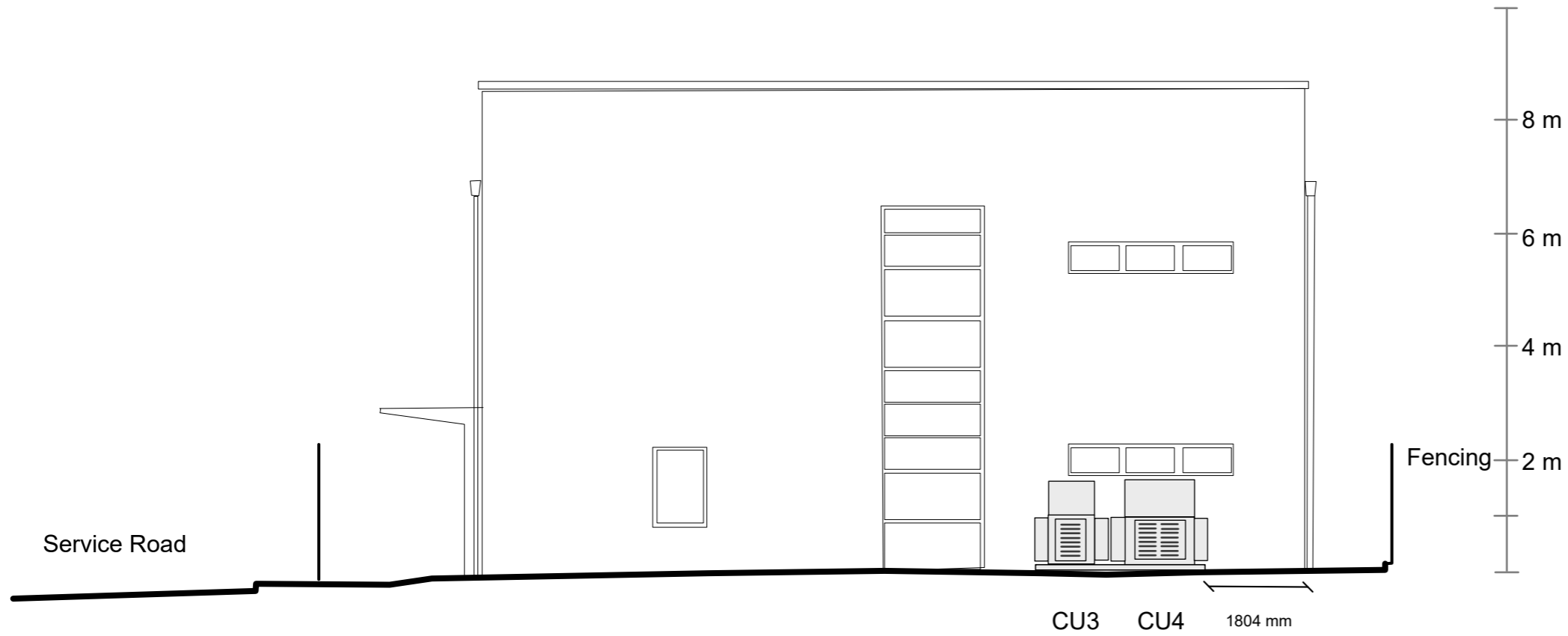


Note:

Do not scale this drawing for construction and ordering.

Actual dimensions to be confirmed on site with approved contractors and verified by Ambient Acoustic Limited.

All intellectual property rights reserved to AEC.



CU3 CU4 1804 mm

2 x Condenser Units with Acoustic Enclosures erected above a concrete pad.



CHARTERED TOWN PLANNERS ARCHITECTS SUSTAINABLE DEVELOPMENT

Directors: G Amos Dip Arch (Oxf) Dip UD MA RIBA MRTPI and C Ellis BA (Hons.)
Registered Architect 059857G 198 High Street Tonbridge TN9 1BE Company No 9385456

Proposed Acoustic Enclosures for
two Condenser Units
at the Train Operating Companies' Building
Cricklewood Sidings Brent Terrace NW2 1LN
for London Borough of Barnet

Drawn by: SV	Date: 27/05/2022	Check: GA	Date: 27/05/22	Authorised by: GA	Date: 27/05/22
--------------	------------------	-----------	----------------	-------------------	----------------

Dwg Title: Proposed South Eastern Elevation	Scale at A3: 1:100	Dwg Number: BXW/SDGS/001
---	------------------------------	------------------------------------

Towards the Railway Sidings

Towards Brent Terrace