

Safety, Health and Environmental Information

Notes below are additional to hazards/risks normally associated with this type of work:

Construction

Ci. TRAN01-CVL-HZD-4446 - Known Buried Services
 Cii. TRAN01-CVL-HZD-4448 - Unknown Buried Services
 Ciii. TRAN01-CVL-HZD-4449 - Culvert in proximity
 Cv. TRAN01-CVL-HZD-4485 - Track Buckling
 Cvi. TRAN01-CVL-HZD-4486 - Gauging
 Cvii. TRAN01-CVL-HZD-4487 - OLE Equipment

Operations

Oi. TRAN01-CVL-HZD-4487 - OLE Equipment

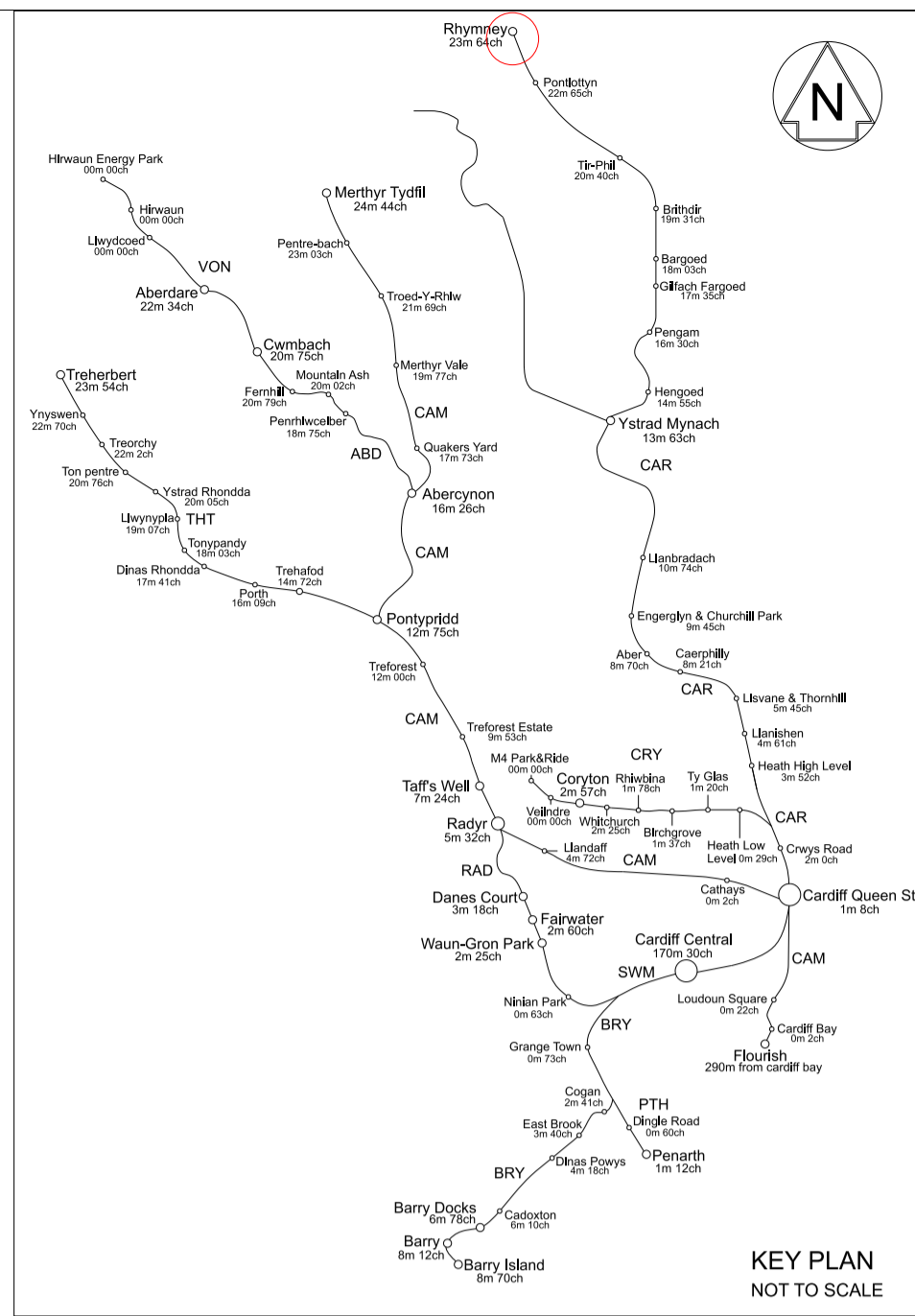
Maintenance

Mi. TRAN01-CVL-HZD-4447 - Chain Movement
 Mii. TRAN01-CVL-HZD-4485 - Gauging
 Miii. TRAN01-CVL-HZD-4486 - Confined Space
 Miv. TRAN01-CVL-HZD-4487 - OLE Equipment

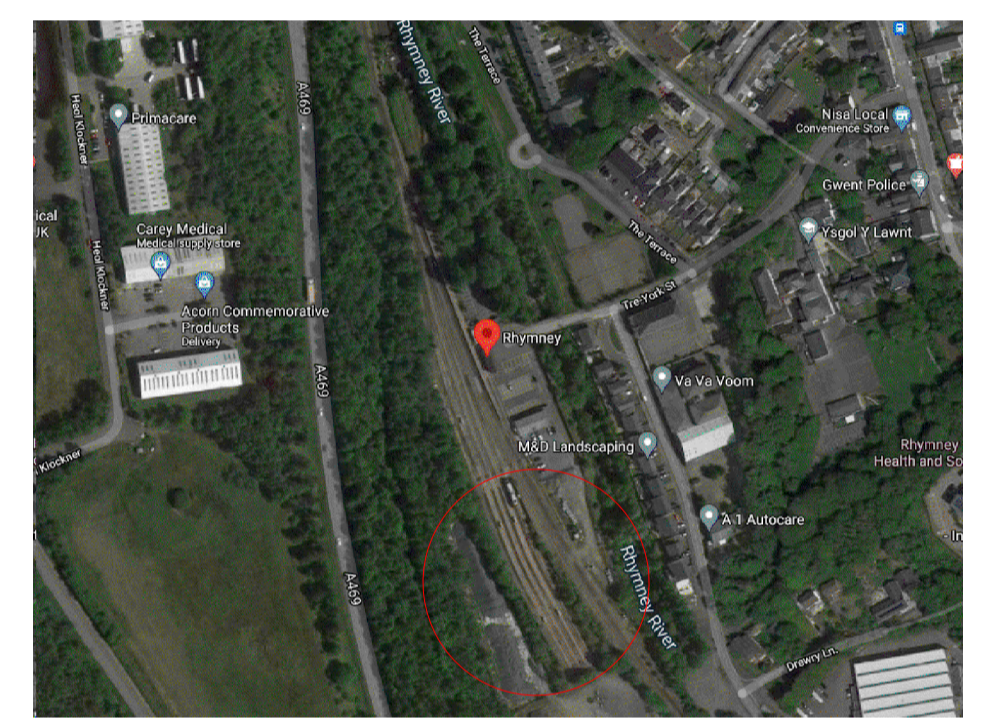
Dismantling/Demolition (Future)

Di. TRAN01-CVL-HZD-4446 - Known Buried Services
 Dii. TRAN01-CVL-HZD-4448 - Unknown Buried Services
 Diii. TRAN01-CVL-HZD-4449 - Culvert in proximity
 Div. TRAN01-CVL-HZD-4450 - Track Buckling
 Dvi. TRAN01-CVL-HZD-4485 - Gauging
 Dvii. TRAN01-CVL-HZD-4486 - Confined Space
 Dviii. TRAN01-CVL-HZD-4487 - OLE Equipment

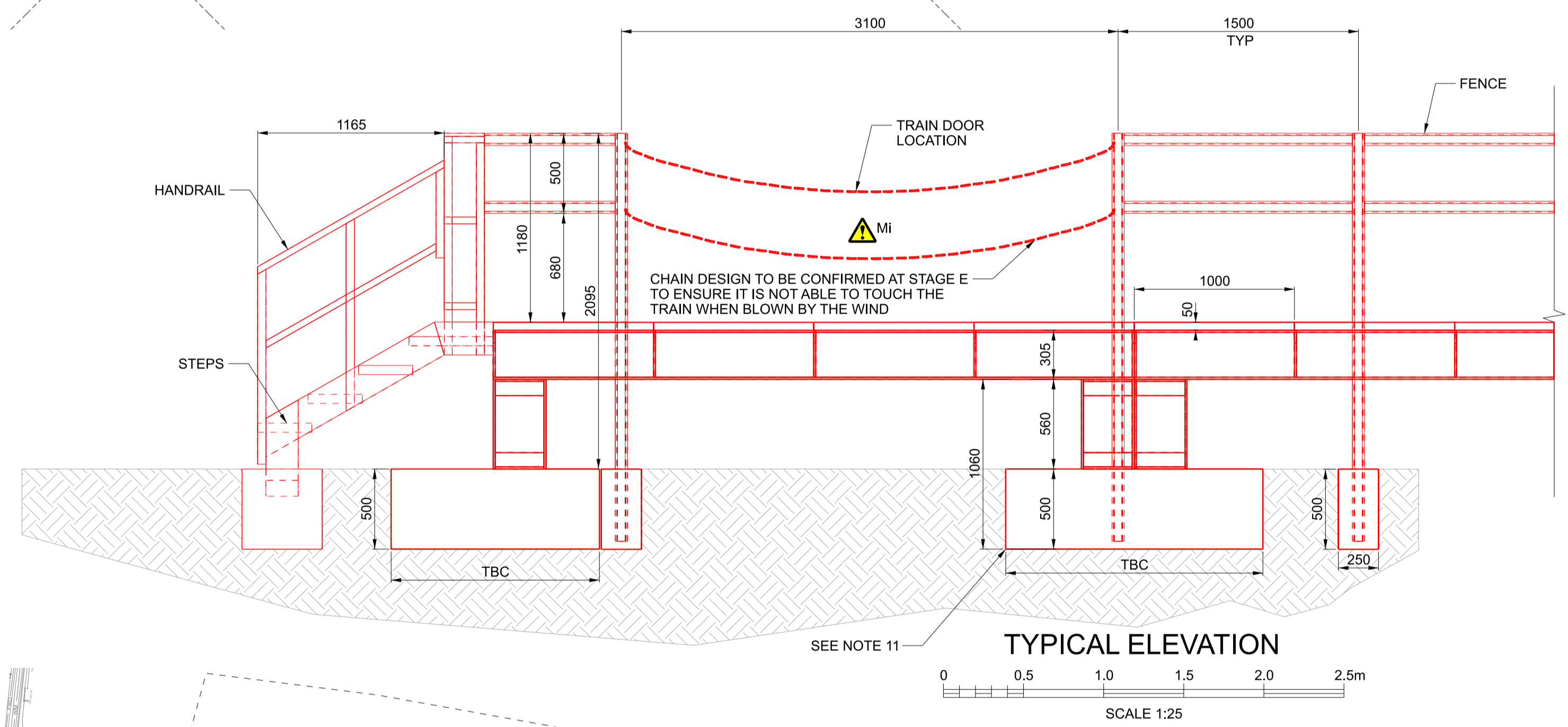
These notes are based on the use of experienced and competent contractors carrying out the work using an approved safe method of working.



- NOTES:**
- DO NOT SCALE OFF THIS DRAWING.
 - ALL DIMENSIONS IN MILLIMETERS UNLESS OTHERWISE STATED.
 - TOPOGRAPHICAL SURVEY BASED ON MODEL: TRAN-KAW-R5-RHY-DMR-G-SU-520001
 - BEAM AND COLUMN ELEMENT SIZES ARE INDICATIVE ONLY AND SUBJECT TO CONFIRMATION AT DETAILED DESIGN STAGE.
 - RHYMNEY STATION/PLATFORM DESIGN IS SHOWN ON DRAWING: TRAN01-KAW-R5-RHY-DDR-C-CV-000036.
 - OTHER PROPOSED DESIGN MODELS ARE OBTAINED FROM THE MODEL: TRAN01-KAW-R5-RHY-PIM-Z-PM-520108. (LAST UPDATED 05/11/21).
 - FOUNDATION FALLS WITHIN THE TRACK SUPPORT ZONE. CONTRACTOR TO DETERMINE IF CRT MONITORING IS APPLICABLE AND FOLLOW THE TRACK MONITORING PROCEDURES IN ACCORDANCE WITH NR/L2/CIV/177.
 - TRAIN LOCATION SHOWN INDICATIVELY. TRAIN DIMENSION BASED ON 4-CAR FLIRT TRAIN LAYOUT.
 - PLATFORMS ARE BASED ON DURACOMPOSITE HOP UP PLATFORMS. MANUFACTURER TO BE CONSULTED AT STAGE E.
 - DRAINAGE DETAILS TO BE CONFIRMED AT STAGE E.
 - FOUNDATION TYPE, SIZE AND CONCRETE SPECIFICATION TO BE FINALISED AT STAGE E FOLLOWING DETAILED GEOTECHNICAL REPORT FOUNDATIONS TO BE FOUND ON NATURAL GROUND.
 - BURIED SERVICES SEARCH TO BE UNDERTAKEN PRIOR TO WORKS COMMENCEMENT. ANY CLASHES WITH THE PROPOSED FOUNDATIONS TO BE REPORTED TO DESIGNER AND PROPOSAL AGREED.
 - TRAIN DOOR LOCATION CHAIN LINK DETAILS AND POSITIONS TO BE CONFIRMED AT STAGE E.
 - PERMANENT WAY TEAM TO CONFIRM STRUCTURAL CLEARANCES AT STAGE E.
 - NEW CROSSING OVER SIDINGS ROAD 1 TO 4 WILL BE A PROPRIETARY SYSTEM. MANUFACTURER TO BE CONSULTED AT STAGE E.
 - SECURITY/ACOUSTIC FENCE AND ACCESS TO THE STABLING FROM THE STAFF BUILDING IS SUBJECT TO A SEPARATE DESIGN SUBMISSION. REFER TO DRG. TRAN01-KAW-R5-RHY-DDR-C-CV-000044.



AERIAL VIEW OF RHYMNEY STATION



- BURIED SERVICES LEGEND:**
- GAS SERVICES
 - TELECOM BT SERVICES
 - ELECTRICAL (LV) SERVICES
 - ELECTRICAL (HV) SERVICES
 - WATER RECORD
 - WESTERN POWER DISTRIBUTION

- COLOUR KEY:**
- RED - NEW OR ADDITIONAL ITEMS
 - GREEN - REDUNDANT OR TO BE REMOVED
 - BLUE - MODIFIED OR TO BE MOVED
 - BLACK - EXISTING OR UNCHANGED
 - MAGENTA - BY OTHERS

Rev	Date	Description of Revisions	Drawn	Chkd	Appr	Suitability
P01	---	Stage B	---	---	---	---
P02	---	FOR IDC	---	---	---	---
P03	24/11/21	For IDC	---	---	---	---
A01	10/12/21	For submission	---	---	---	---

Fit for Contractor Design D3

TRAFNIDIAETH CYMRU
 TRANSPORT FOR WALES

amey
 S E I L W A I T H
 I N F R A S T R U C T U R E

Authorised	T.Perren	Signed	Authorised by eSign	Date	17/12/21
Contractor(s)	Amey Infrastructure Wales				
Sub-Asset	TRAN01				
Type	CAD drawings	Sub-Type	DDR	Role	CV
Location Zone	RHY	Plan of Work Stage	C		

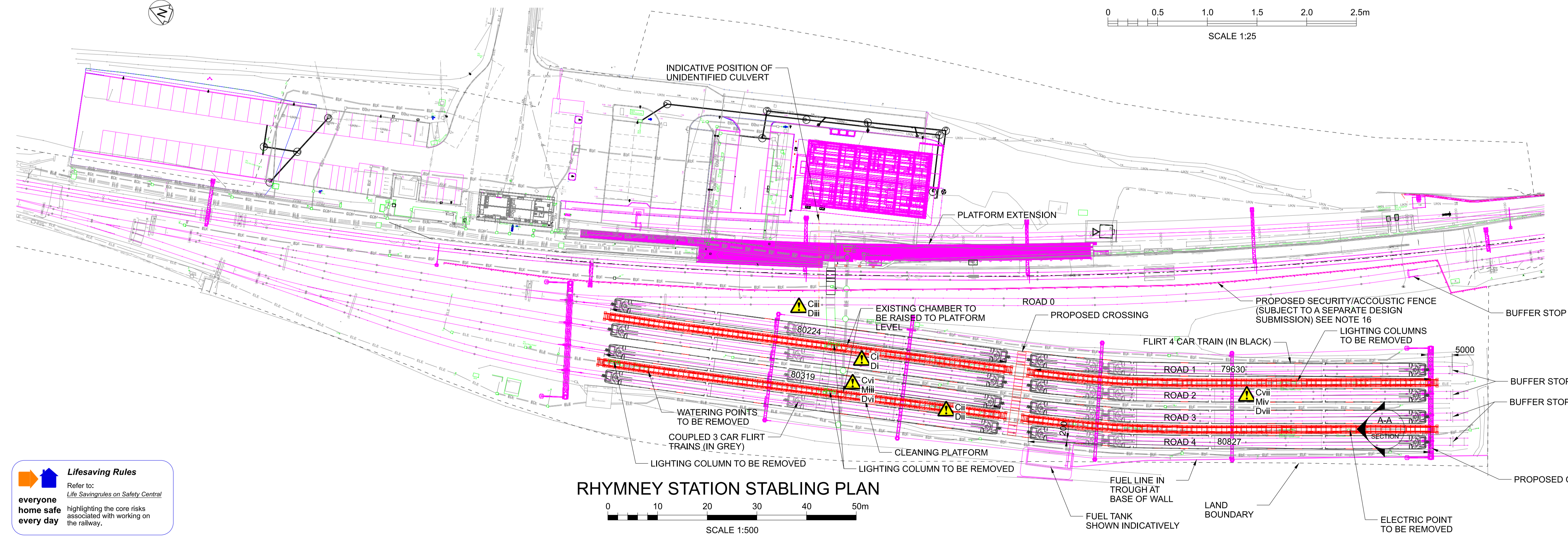
TRAN01 - CVL Transformation

Route Section Group
 Route Section Group 5
 Route Section
 Rhymney Valley

Drawing Title
Rhymney Stabling Cleaning Platforms
 General Arrangement

Designed	L.Weeks	Signed	Designed by eSign	Date	09/12/21
Drawn	D.Tom	Signed	Drawn by eSign	Date	10/12/21
Checked	K.Velventhan	Signed	Checked by eSign	Date	10/12/21
Approved	S.Sathananthan	Signed	Approved by eSign	Date	10/12/21
Scale(s)	(AS SHOWN)	ELR & Mileage	From To		
Alternative Reference	CAR	23M 54ch	23M 62ch		

Drawing Number	TRAN01-KAW-R5-RHY-DDR-C-CV-000037	Revision	A01
----------------	-----------------------------------	----------	-----



Lifesaving Rules

Refer to: [Life Saving Rules on Safety Central](#)

everyone home safe every day

highlighting the core risks associated with working on the railway.

Not for Construction

Published