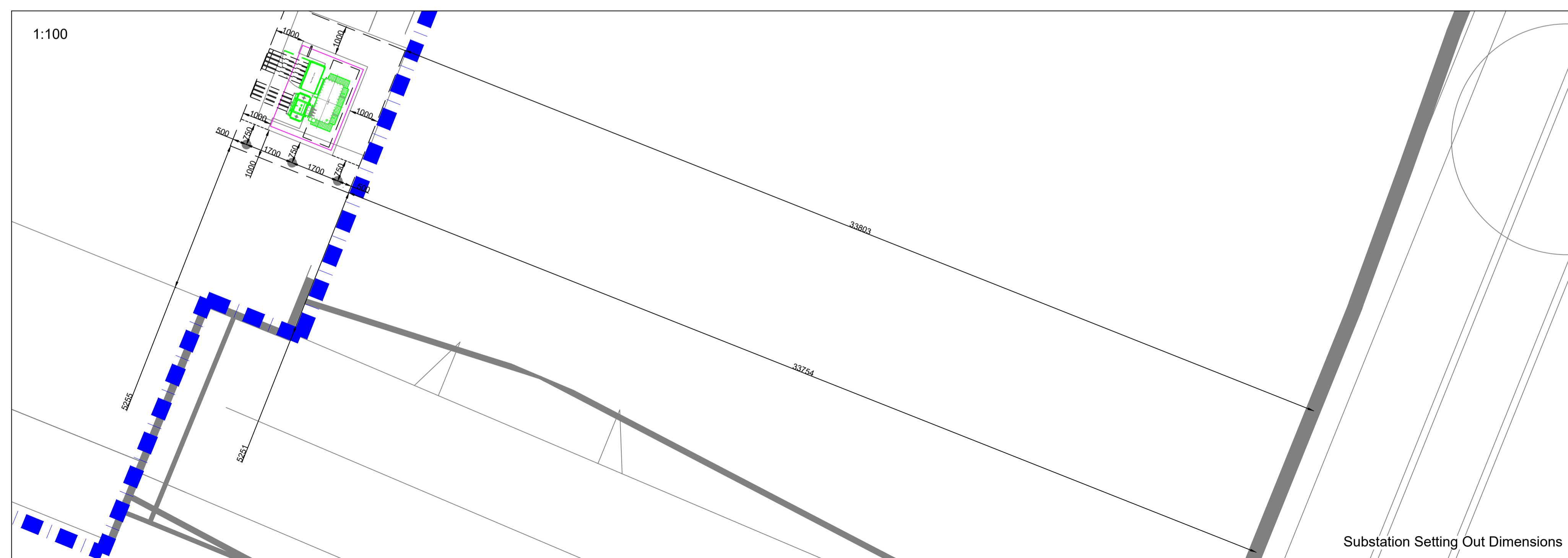
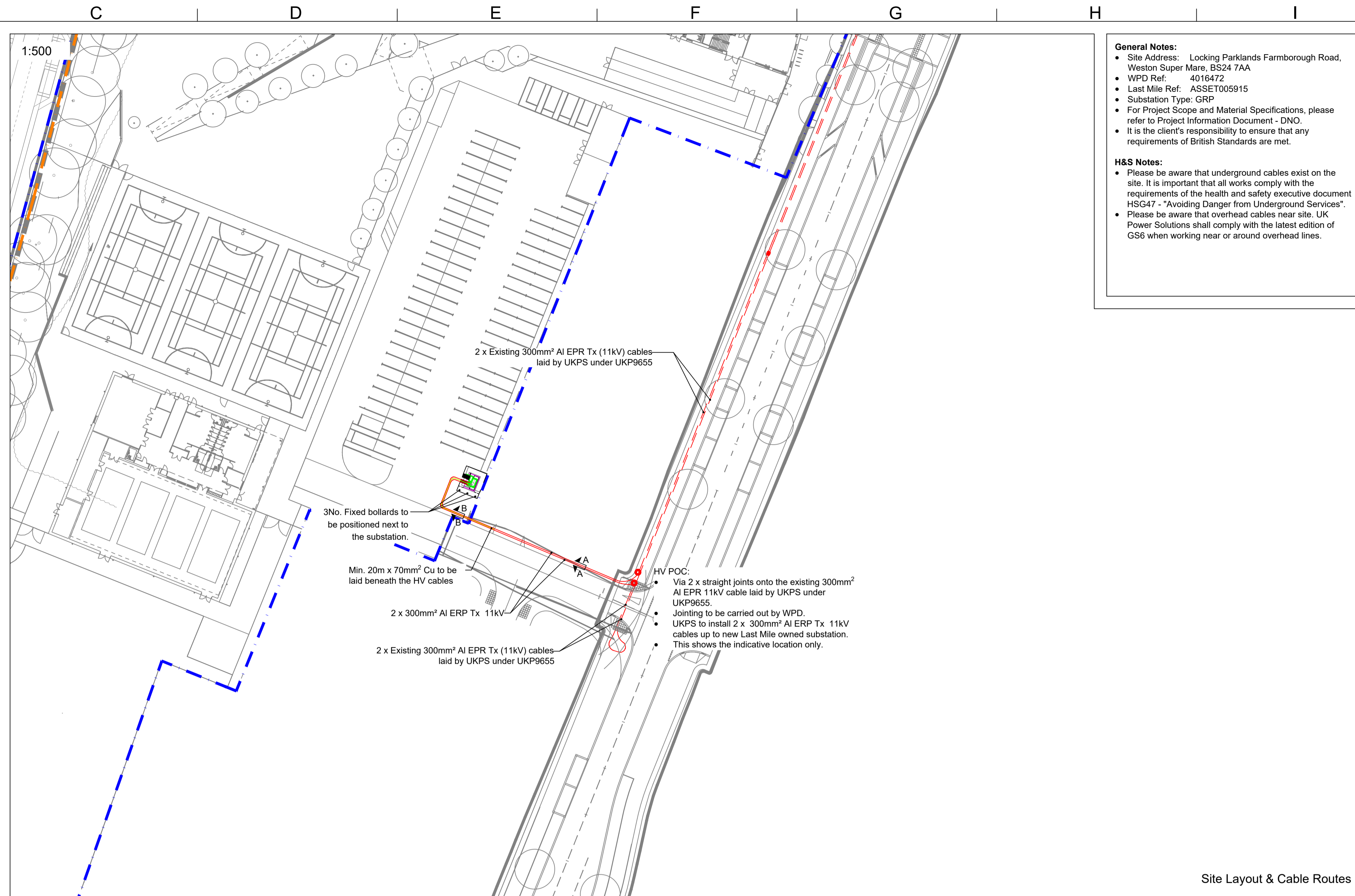
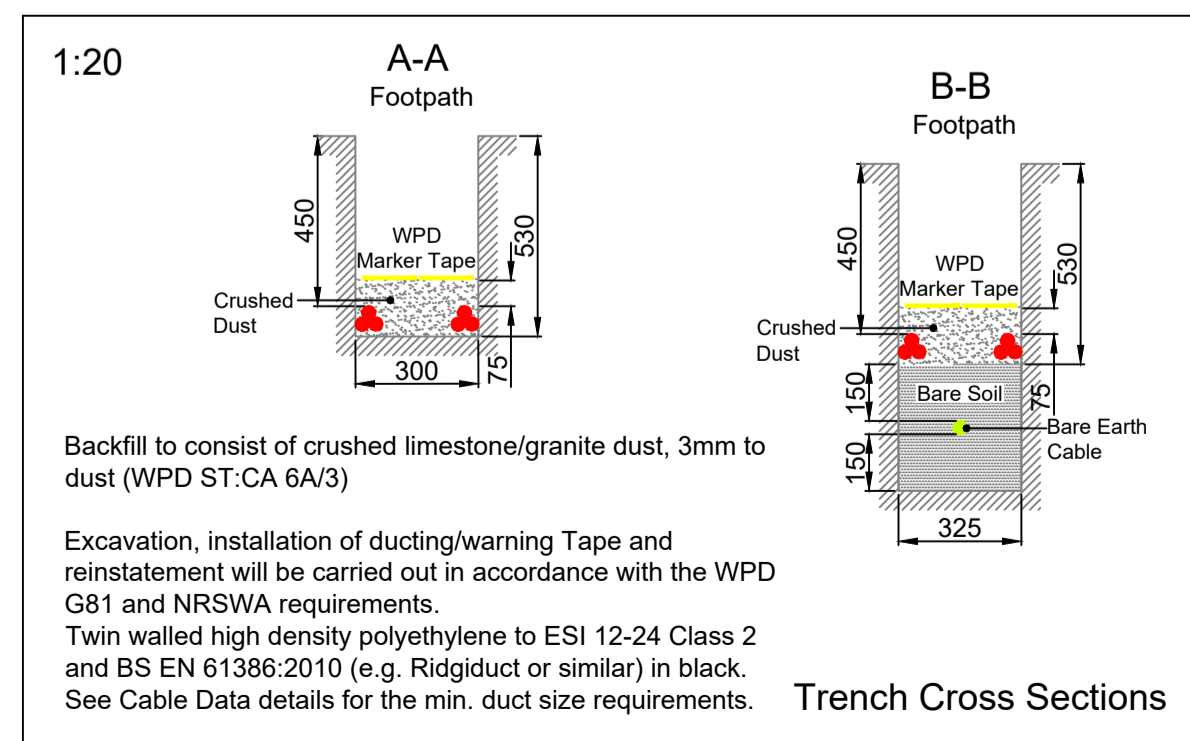
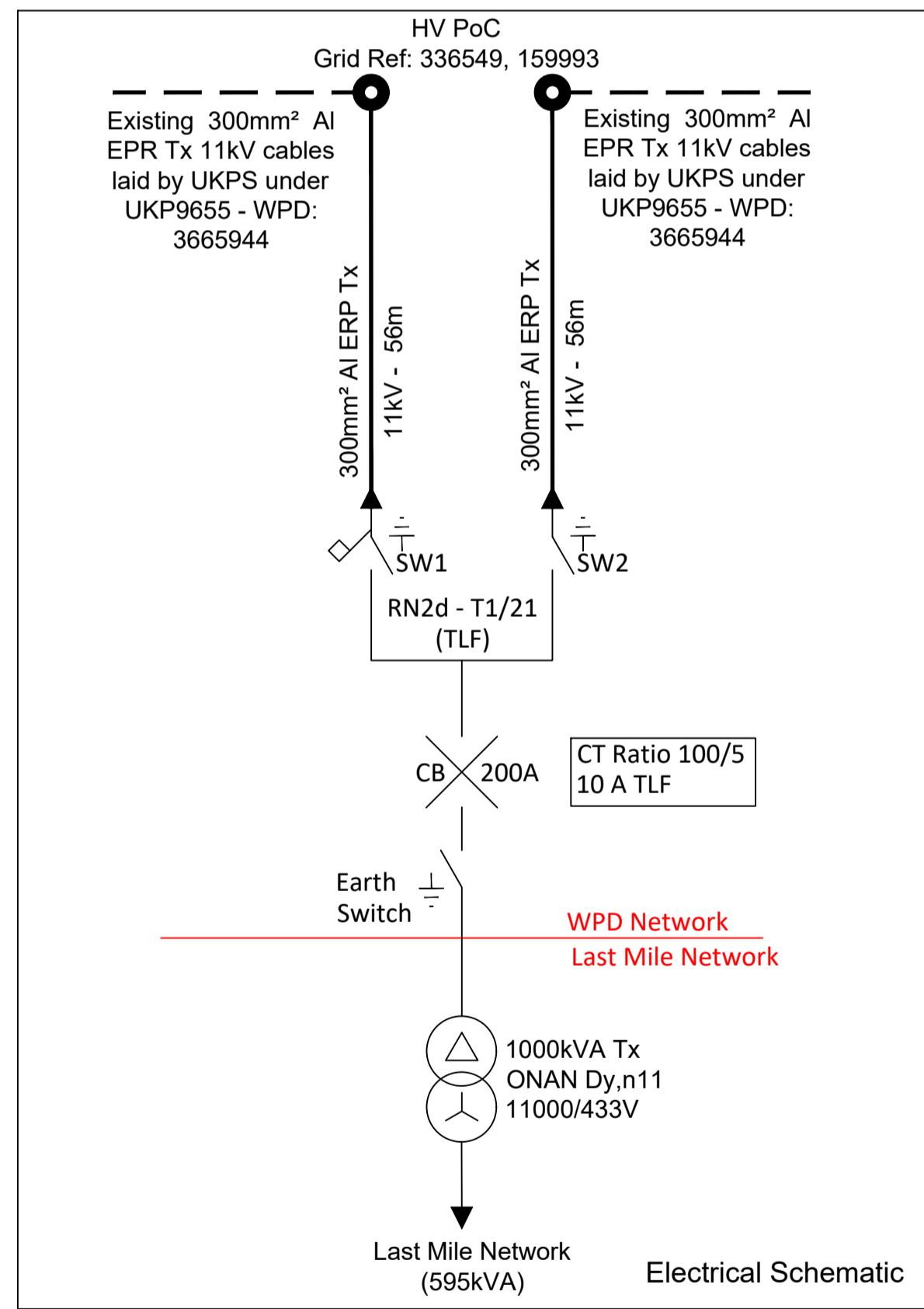


Cable Installation Data			
Cable Type	Max Pulling Tension	Minimum Bending Radius (On Route)	Minimum Duct Size (ID)
300mm ² Al EPR Triplex 11kV	4107N	750mm	150mm



- General Notes:**
- Site Address: Locking Parklands Farmborough Road, Weston Super Mare, BS24 7AA
 - WPD Ref: 4016472
 - Last Mile Ref: ASSET005915
 - Substation Type: GRP
 - For Project Scope and Material Specifications, please refer to Project Information Document - DNO.
 - It is the client's responsibility to ensure that any requirements of British Standards are met.
- H&S Notes:**
- Please be aware that underground cables exist on the site. It is important that all works comply with the requirements of the health and safety executive document HSC47 - "Avoiding Danger from Underground Services".
 - Please be aware that overhead cables near site. UK Power Solutions shall comply with the latest edition of GS6 when working near or around overhead lines.
- Substation Access:**
- Minimum 1000mm clearance and handstanding required around the substation.
 - 24/7 unimpeded access to be provided for both WPD/Last Mile. Handstanding to be provided from substation to adopted highway.
 - If the substation is located behind additional locked gates or doors then these are also required to be locked in the standard WPD/Last Mile master locking suite. Lock cases shall be capable of receiving a heavy duty padlock.
 - Where substations are sited within gated developments or high security compounds with controlled access via electronic key fob or other electronic locking mechanism, then a key switch override facility will have to be provided by the landlord/developer and operated by the WPD/Last Mile master key. All electrically operated gates / doors must be set to failsafe into the open position so as to still permit access in the event of a loss of electrical supply.

Legend	
	HV Point of Connection
	Existing HV Cable
	New HV Cable
	Site Boundary
	Phase Boundary - Secondary School
	HV Straight Joint (STJ)
	Earthing
	Earth Rod

REV	AMENDMENT	DATE	BY
1	Approved for Construction	07/03/2022	MS
0	Preliminary Issue	20/12/21	MS

UKPS
UK POWER SOLUTIONS
The Utility Connection Company

River View House, Bonds Mill Estate, Bristol Road, Stonehouse, Gloucestershire, GL10 3RF
4th Floor, West World, West Gate, Ealing, London, W5 1DT
Suite 36, Genesis Centre, Birchwood, Warrington, WA3 7BH
ukpowersolutions.co.uk

Client	St. Modwen Developments Limited		
Project	Locking Parklands - Secondary School (PAR01389)		
Title	Complete Design Plan		
Design & Planning Engineer	Mohammed Sanusi	Contact No.	08452 577 105
Project Manager	TBC	Contact No.	TBC
Drawn By	MS	Checked By	NM
Scale	As shown	Date	20/12/2021
Sheet No.	1/1	Original Size	A1
Drawing No.	PAR01389 - E020001 - DWG800		
Client Ref.	-		
Rev	1		
Drawing Status	Approved for Construction		