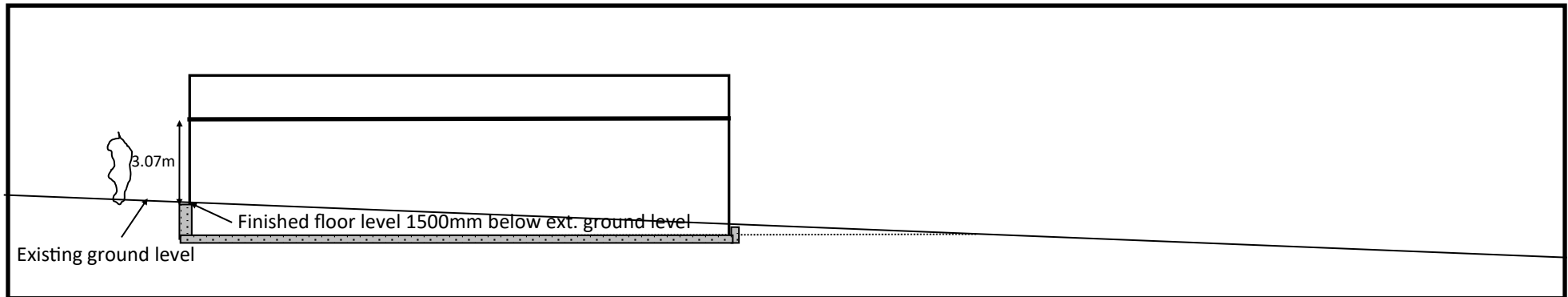


## Section A—A<sup>1</sup> - Horizontal and Vertical Scale 1:100



### Planting Schedule (See 1-500 plan for positions)

T1 = Sorbus Aucuparia (Rowan)

T2 = Ilex Aquifolium (Holly)

T3 = Acer Campestre (Field Maple)

T4 = Betula Vericosa (Silver Birch)

T5 = Carpinus Betulus (Hornbeam)

T6 = Acer Pseudoplatanus (Sycamore or a more colourful maple)

All trees to be 1.8/2m standard whips trans-planted from containers in first planting season after completion of the construction.

### Objective

To break up the outline of the permitted building, by seeking a transition from field edge to more of a garden setting with a mixture of fast and slow growing trees with a nod to colour and ornament suited to the garden setting. The necessary trees here could be the start of creating more varieties of ornamental trees in the large open area of the garden.

**Discharge of Conditions 5 and 6 on consent 22/00570/FULHH, Drumwalt, Gaddesby Lane, Kirby Bellars, LE14 2TQ**

Steedman Planning, Wayside Cottage, Stanton-by-Bridge, Derby, DE73 7HU 07974 877908