

WILLOW CORNER COTTAGE
REF: PP-11059575

Annex to Design, Access and Heritage Statement



Photo 1: WCC S elevation



Photo 2: study/parlour



Photo 3: living room/hall



Photo 4: dining room/service end



Photo 5: bedroom 1 (above study/parlour)



Photo 6: bedroom 2 (above living room/hall)



Photo 7: bedroom 3 (above service end)



Photo 8: landing from E

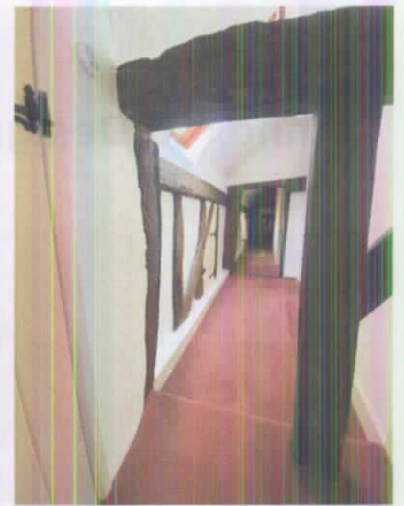


Photo 9: landing from W

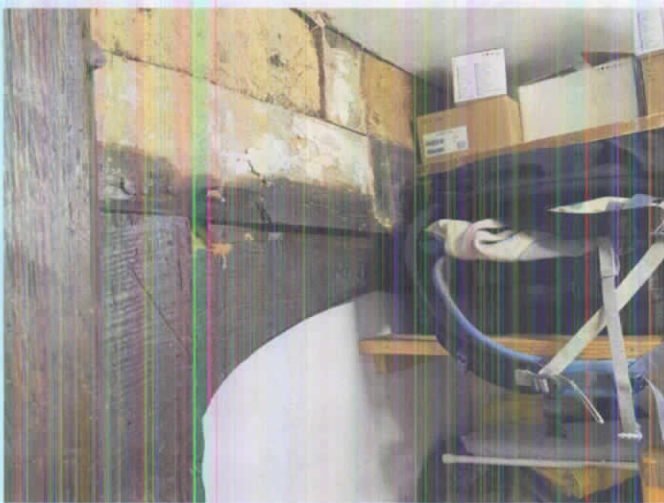


Photo 10: 16C doorhead



Photo 11: section of shelving to be removed



Photo 12: shed, E side

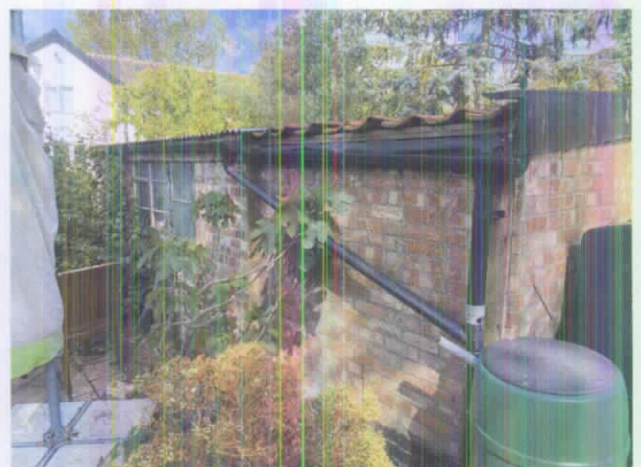


Photo 13: shed, W side



Photo 14: shed, 2 windows on W side



Photo 15: shed, W side, roof pantiled on S part and corrugated on N part



Photo 16: shed, S door on E side



Photo 17: shed, N door on E side



Photo 18: garage, N side



Photo 19: garage, N side, clay lump in E part (below gable) and brick in W part



Photo 20: garage, door on W side



Photo 21: garage, glazing missing on S side



Photo 22: study, damp below sole plate on S side

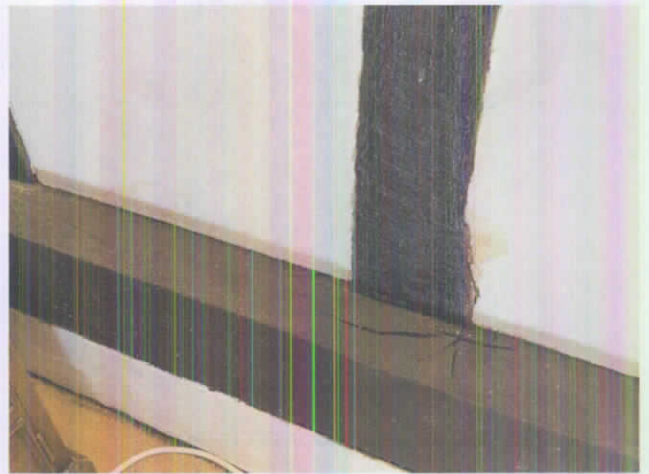


Photo 23: study, damp above sole plate on E side



Photo 24: study, frass on S side

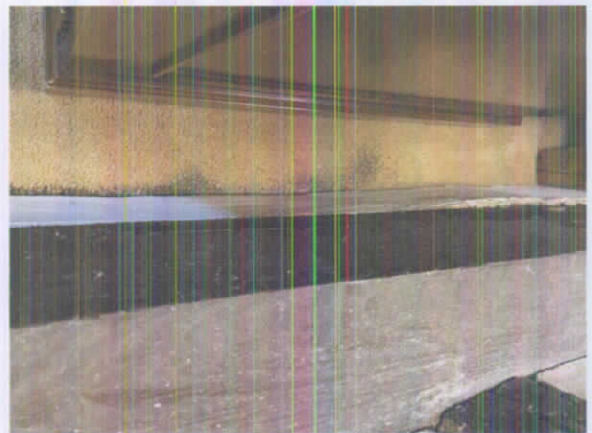


Photo 25: study, frass on E side



Photo 26: study, damp on E wall



Photo 27: E elevation, cracked render



Photo 28: E elevation, cracked render



Photo 29: S elevation cracked render (gable is 20C, E of gable is 16C, 20C porch just seen on R)



Photo 30: S elevation, cracked render



Photo 31: N elevation, bitumened 16C brick plinth

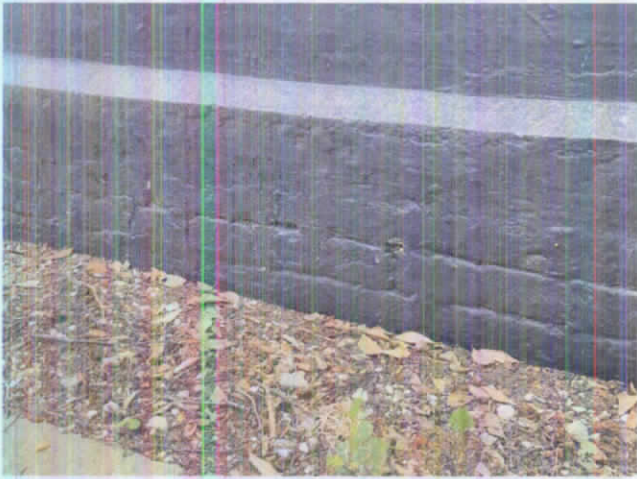


Photo 32: N elevation, bitumened 16C brick plinth

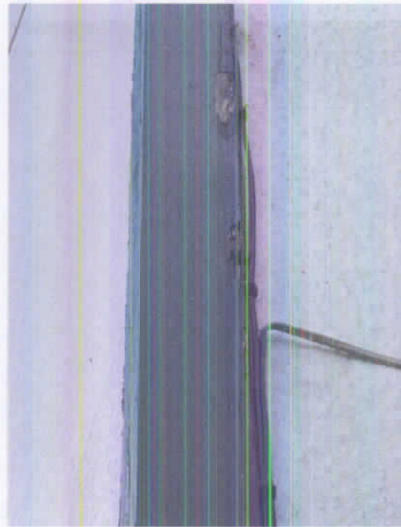


Photo 33: NE corner, rotten timber



Photo 34: NW corner of shower room, rotten timber



Photo 35: NW corner of garden room, rotten timber



Photo 36: N side of conservatory, rotten timber



Photo 37: W side of conservatory, rotten timber