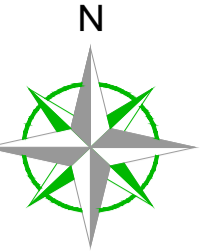
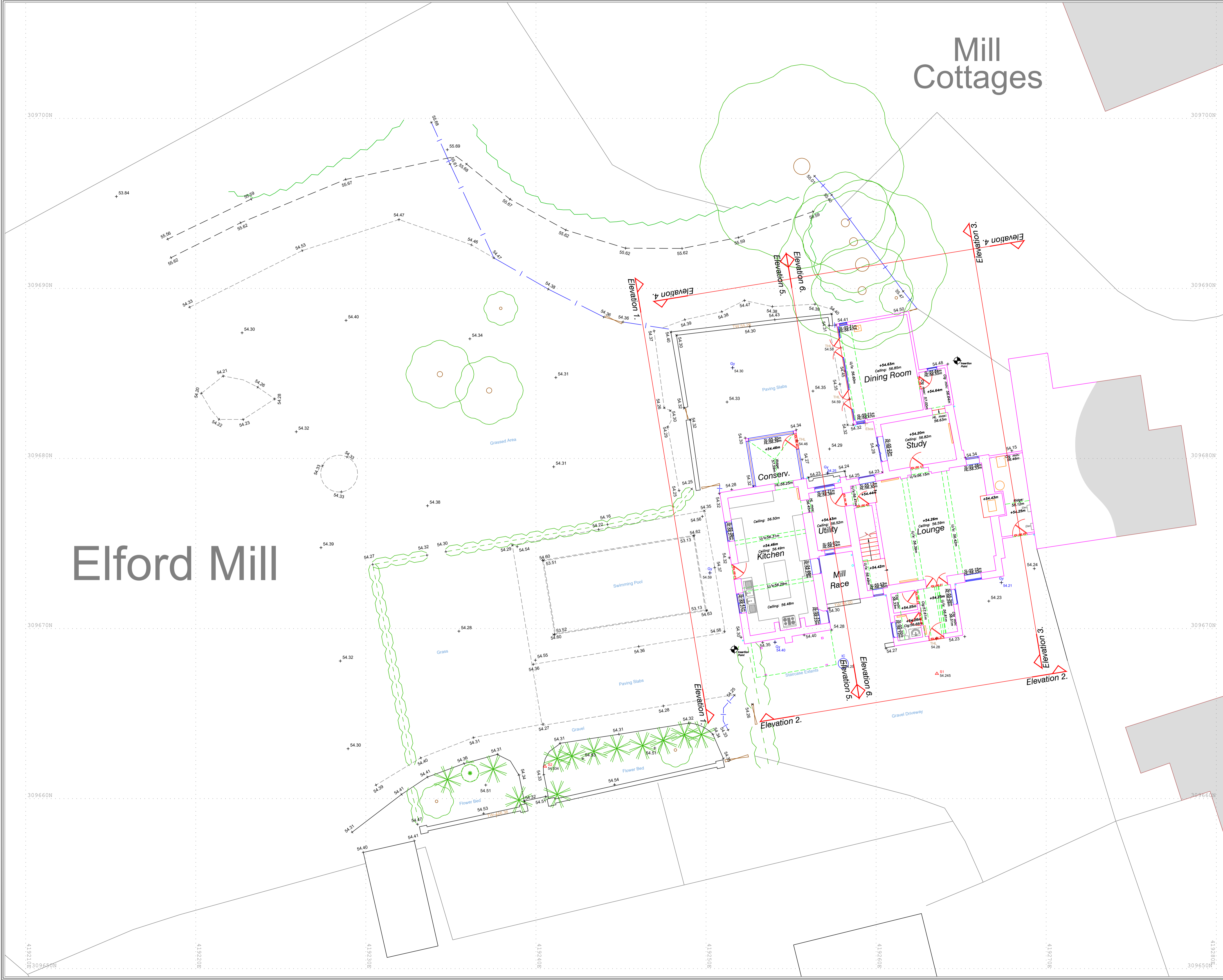


Mill Cottages



Elford Mill



Station Information:

Station	Easting (m)	Northing (m)	Level (m)
S1	419263.5730	309667.3560	54.245
S2	419240.5312	309661.8954	54.534

OS Note:

The Ordnance Survey file is to be used as a guide only.
 OS Buildings Surveyed Buildings

This survey has been orientated to the Ordnance Survey (O.S.) National Grid (OSGB36/15) via Global Navigational Satellite Systems (GNSS) and the O.S. Active Network (OS Net). A true OSGB36 coordinate has been established near to the site centre via a transformation using the OSTN15GB & OSGB15GB transformation models.

The survey has been correlated to this point and a further one or more OSGB36/15 points established to create a true O.S. bearing for angle orientation.

No scale factor has been applied to the survey therefore the coordinates shown are arbitrary & not true O.S. Coordinates which have a scale factor applied.

Please refer to Survey Station Table to enable establishment of the on-site grid.

Building Survey Legend:

SH 1.00	Sill Height from FFL
HHT 2.12	Head Height from FFL
SL 51.03m	Sill Level from defined datum.
HL 52.82m	Head Level from defined datum.
Susp Cht: 2.00	Suspended Ceiling Height from FFL
Struct Cht: 3.00	Structural Ceiling Height from FFL
Susp Cell: 30.00m	Suspended Ceiling Level from datum.
Struct Cell: 31.00m	Structural Ceiling Level from datum.
IFL: 100.00m	Internal Floor Level (General)
+100.00m	Internal Floor Level (Specific)
	Insertion Point for overlay drawings of other floors or details.

Incoming Services Legend:

	Gas
	Water

Topographical Survey Legend:

	Boundary		Drainage		Excavation		Spot
	Concrete		Down pipe		Water level		Spot
	Grass		Down pipe		Water level		Spot
	Gravel		Down pipe		Water level		Spot

Rev	Date	Description	Drawn	Q. Ref.

Topographical Surveys
 Site Engineering
 Utility / CCTV Surveys
 Bathymetric Surveys

Measured Building Surveys
 3D Laser Scanning
 3D Revit & BIM Models
 Arch, Laser & Fire Plans

Rowan House
Duffield Road
Little Eaton
Derby
DE21 5DR
 Tel (01332) 830044 Fax (01332) 830055
 admin@greenhatch-group.co.uk
 www.greenhatch-group.co.uk

St Albans Unit 6, The Courtyard Alban Park St Albans Hertfordshire AL4 0LA t. (01727) 854481	Newcastle 24 Riverside Studios Armidale Road Newcastle Bus Park Newcastle Tyne NE4 7YL t. (01912) 736391	Central London 27 Cornwall Terrace West London NW1 5LL t. (0207) 2241866
--	--	--

CLIENT	JMJ Architecture		
PROJECT	Elford Mill Tamworth Road B79 9BL		
TITLE	Existing Site Plan		
SCALE	A1@ 1: 100	DATE	28.04.22
DRAWN	DSW	QUALITY REF	GH13567
Level datum	See OS notes above		
Grid orientation	See OS notes above		
Job number	43418		
Drawing No.	43418_01_P	Rev.	0

Comments
 This plan should only be used for its original purpose. Greenhatch Group accepts no responsibility for this plan if supplied to any party other than the original client.
 All dimensions should be checked on site prior to design and construction.
 Some services may have been omitted due to parked vehicles.
 Drainage information (where applicable) has been visually inspected from the surface and therefore should be treated as approximate only.