



Design and Access Statement
37 Unit Dementia Centre
on Land at Halstead Hall, Halstead, Essex
for Stow Healthcare Limited
prepared by MELVILLE DUNBAR ASSOCIATES
August 2022



Smashed Windows



Damaged Slate Roofing






Ground Floor Plan



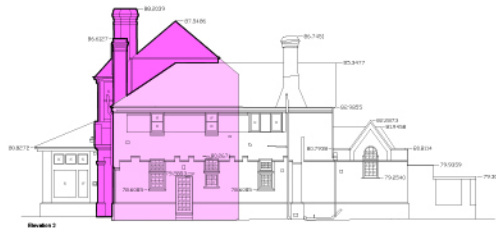
First Floor Plan

 To be retained





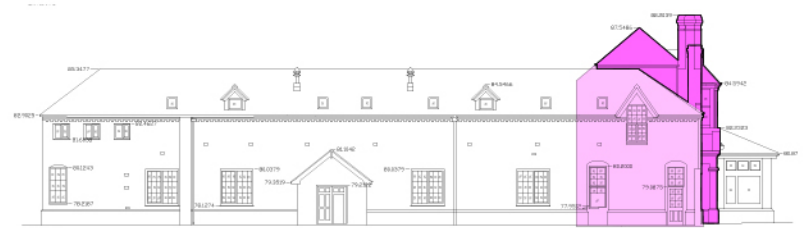
Elevation 1




Elevation 2




Elevation 3



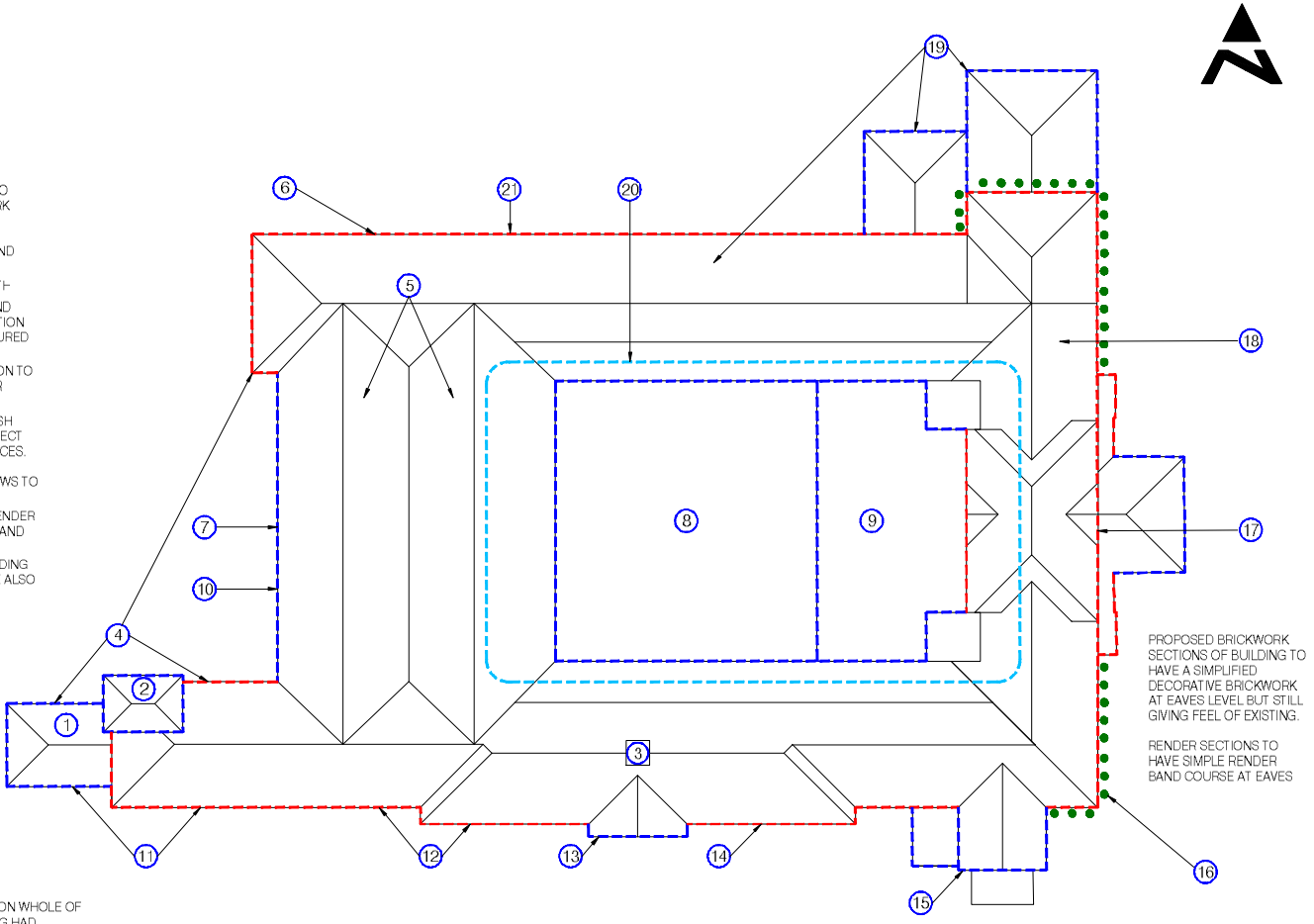
Elevation 6

 To be retained

 To be retained behind elevation

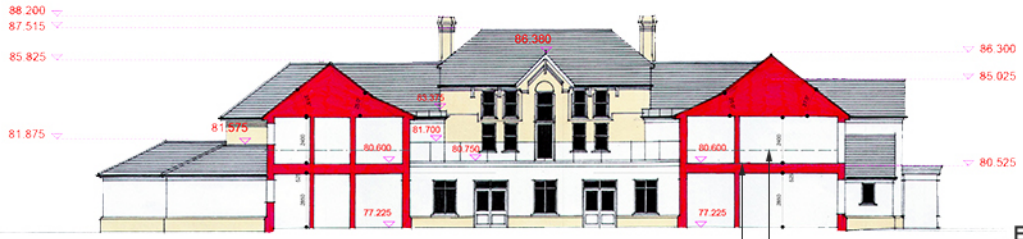


- ① PLANT ROOM
- ② LIFT FEATURE
- ③ FEATURE ON ROOF BUILDING TO HAVE PROJECTIONS TO GIVE ARTICULATION
- ④ DOUBLE BANK OF ROOMS WITH CENTRAL GUTTER TO KEEP RIDGE LINE DOWN
- ⑤ BRICKWORK - BUFF BRICK TO MATCH EXISTING BRICKWORK WITH MATCHING COLOUR, STONWORK CILLS AND SURROUNDS TO WINDOW AND DOOR OPENINGS
- ⑥ RENDER ABOVE BRICK PLINTH-BUILDING DESIGNED AROUND COURTYARD WITH CIRCULATION CORRIDOR ADJACENT (SECURED COURTYARD)
- ⑦ TERRACE (SECURED) SECTION TO BE KEPT TO RETAIN FORMER BALLROOMS DECORATIVE
- ⑧ WHITE WINDOWS UPVC FLUSH CASEMENT WITH WOOD EFFECT FINISH TO EXTERNAL SURFACES. (TRADITIONAL LOOK BUT IN MODERN MATERIAL). WINDOWS TO HAVE VERTICAL EMPHASIS
- ⑨ USE OF BRICKWORK AND RENDER TO BREAK DOWN BUILDING AND GIVE ARTICULATION
- ⑩ DIFFERENT WIDTHS OF BUILDING TO GIVE ARTICULATION (SEE ALSO DETAILS SHEETS)
- ⑪ FEATURE GABLE
- ⑫ PROFILED GUTTERS
- ⑬ FEATURE ENTRANCE
- ⑭ USE RECLAIMED BRICKS FROM DEMOLITION FOR THIS SECTION
- ⑮ ORIAL FEATURE WINDOWS TO REMAIN SLATE TYPE ROOF TO MATCH EXISTING
- ⑯ USE OF SINGLE AND TWO STOREY TO GIVE ARTICULATION
- ⑰ ENDLESS CIRCULATION ROUTE FOR RESIDENTS
- ⑱ PROJECTING BRICK PLINTH ON WHOLE OF BUILDING. EXISTING BUILDING HAD DECORATIVE BRICKWORK AT EAVES LEVEL



PROPOSED BRICKWORK SECTIONS OF BUILDING TO HAVE A SIMPLIFIED DECORATIVE BRICKWORK AT EAVES LEVEL BUT STILL GIVING FEEL OF EXISTING.

RENDER SECTIONS TO HAVE SIMPLE RENDER BAND COURSE AT EAVES



Existing floor level 81.350

Proposed floor level 80.600



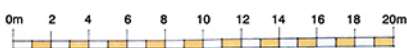
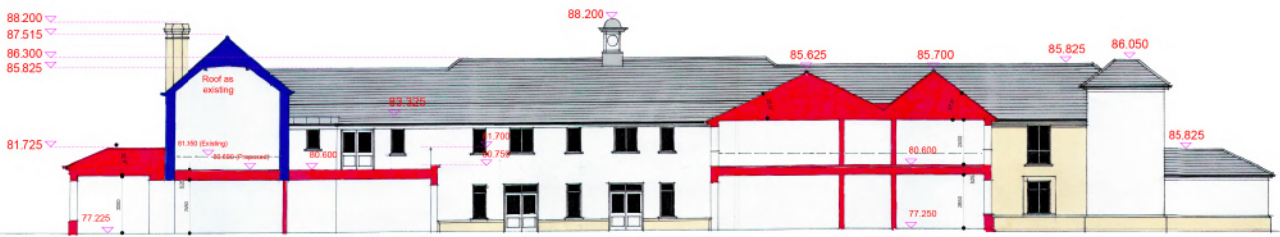
Existing floor level 81.350

Proposed floor level 80.600



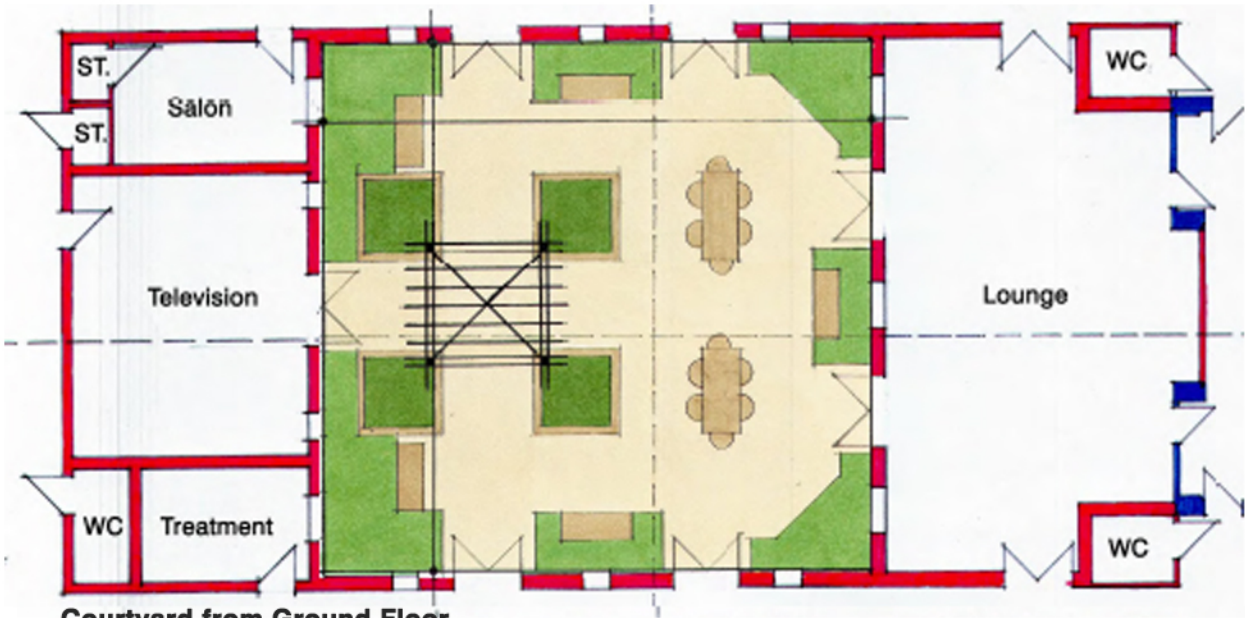
Existing floor level 81.350

Proposed floor level 80.600

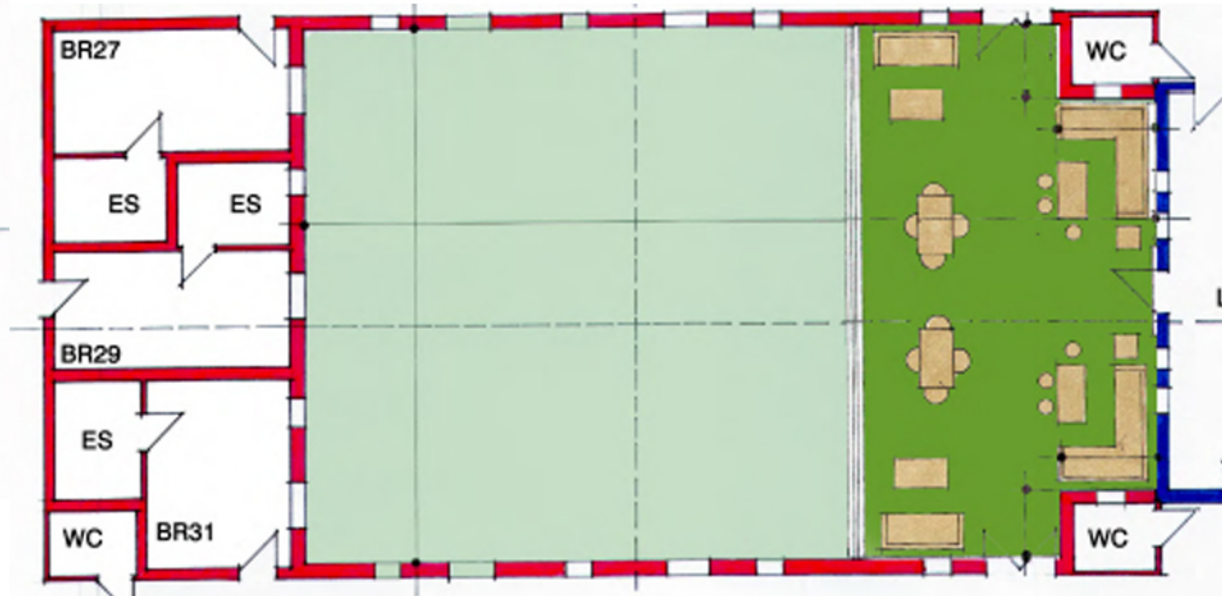




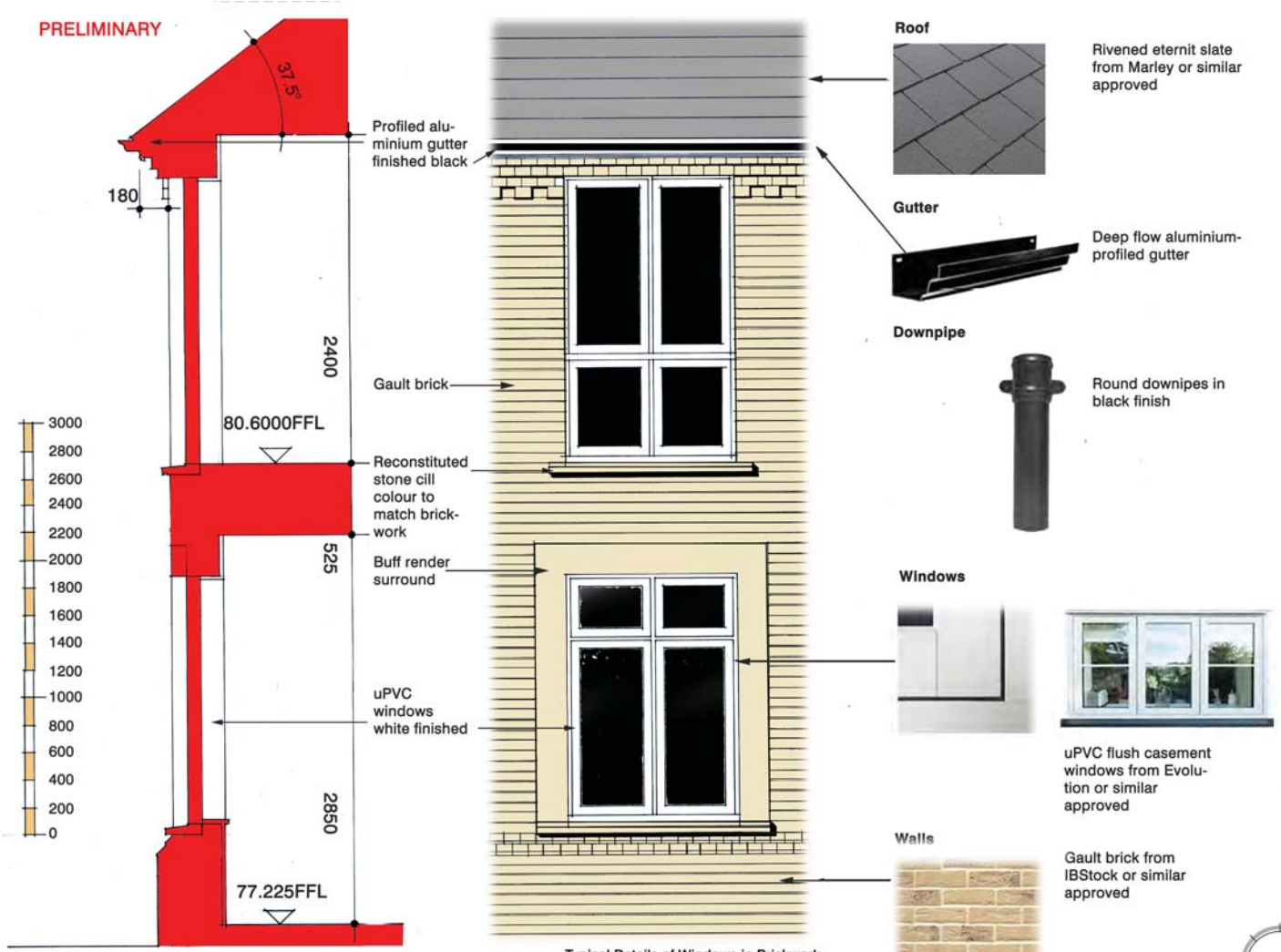
- Bedrooms
- Ensembles



Courtyard from Ground Floor



Courtyard from First Floor

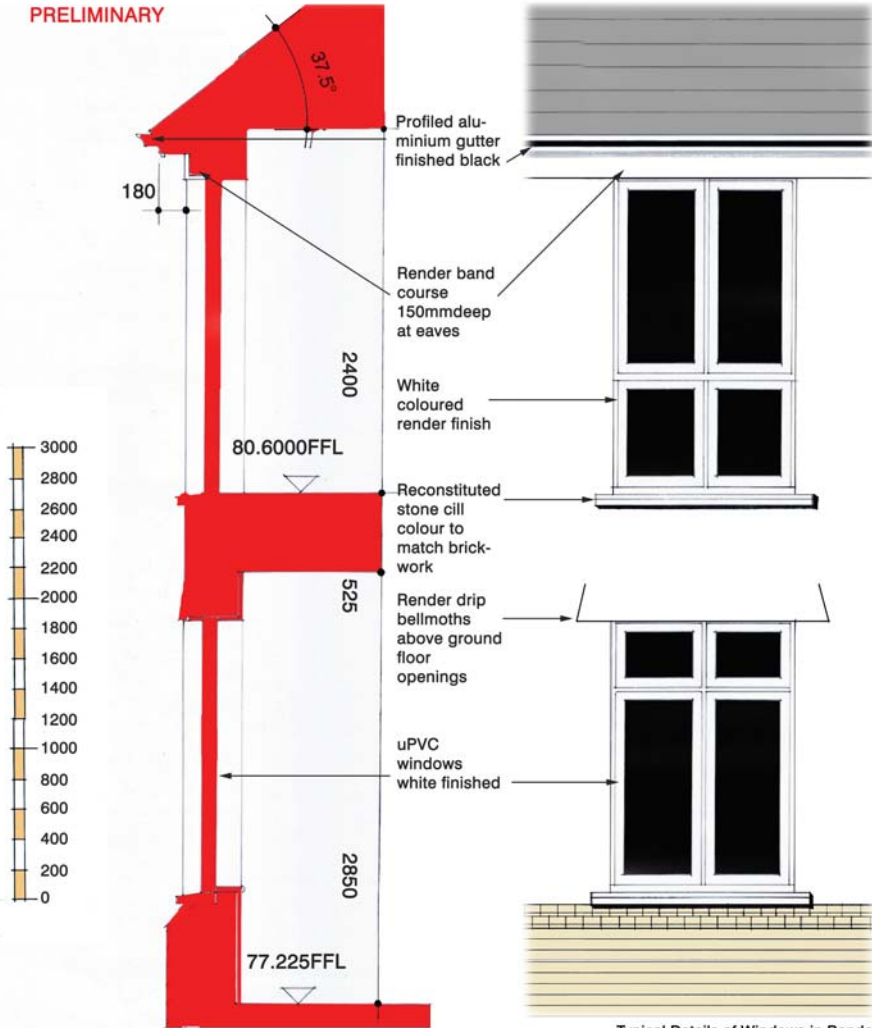


Typical Details of Windows in Brickwork
37 Unit Dementia Centre
for Stow Healthcare Limited
on Land at Halstead Hall, Halstead

Scale: 1:25 @ A3
Drawing: 1544 - DC - 009
Date: May 2022

MELVILLE DUNBAR ASSOCIATES
PLANNING URBAN DESIGN ARCHITECTURE
The Mill House, Kings Acre, Coggeshall, Essex CO6 1NY
Tel: 01376 562828 Email: info@melvilledunbarassociates.com
Fax: 01376 561437 Web: www.melvilledunbarassociates.com

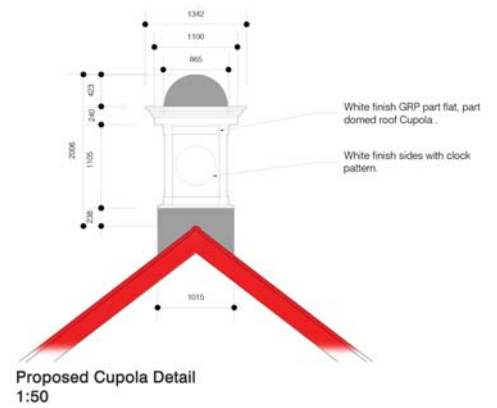
PRELIMINARY



Scale: 1:25 & 1:50 @ A3
 Drawing: 1544 - DC - 010
 Date: May 2022

Typical Details of Windows in Render
 1:25

Typical Details of Windows in Render
 37 Unit Dementia Centre
 for Stow Healthcare Limited
 on Land at Halstead Hall, Halstead



Proposed Cupola Detail
 1:50



Commemorative plaque to the Veysi family to remain in original form

MELVILLE DUNBAR ASSOCIATES
 PLANNING URBAN DESIGN ARCHITECTURE
 The Mill House, Kings Acre, Coggeshall, Essex CO6 1NY
 Tel: 01376 562828 Email: info@melvilledunbarassociates.com
 Fax: 01376 561437 Web: www.melvilledunbarassociates.com

