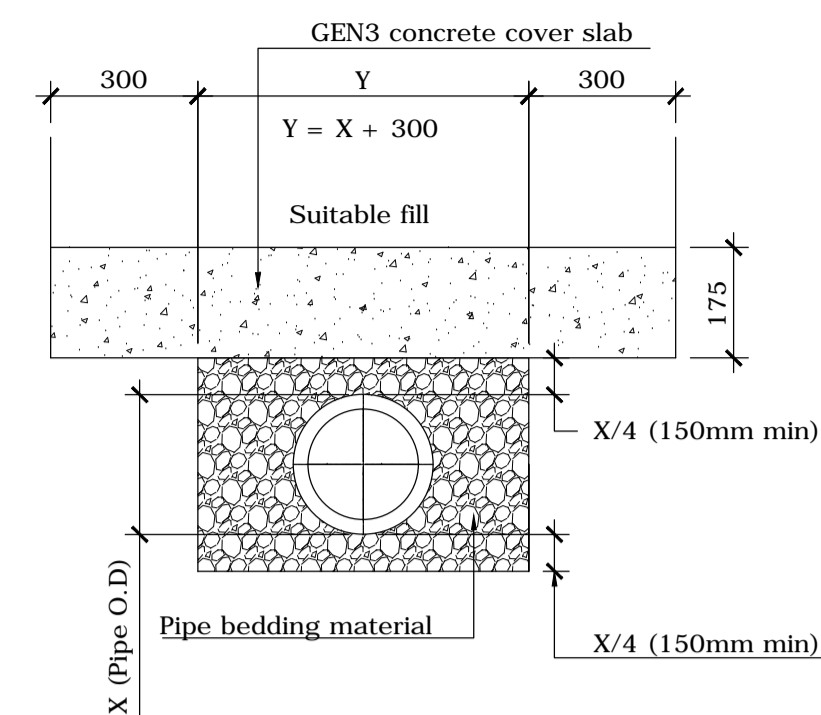


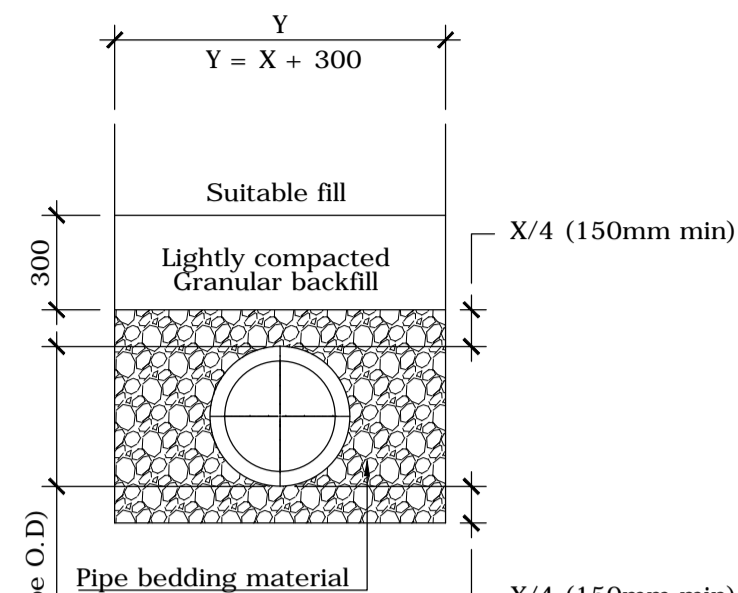
1. ALL DIMENSIONS ARE IN MILLIMETERS UNLESS STATED OTHERWISE.
2. THIS DRAWING IS TO BE READ IN CONJUNCTION WITH ALL RELATED RICHARD JACKSON LTD. ARCHITECTS & SUB-CONTRACTORS DRAWINGS. IN THE CASE OF DISCREPANCIES BETWEEN DRAWINGS REFER TO RJLTD FOR CLARIFICATION.

Permitted Pipe/Bedding Types		
Pipe Bedding	Depth of Cover Below Roads	
	1.2m-3.5m	1.2m-3.5m
Pipe Type	Type S	Type S
	Concrete Class 120 to BS:5911-1:2002.	Vitrified clay to BS:65, with flexible joints super strength class for 225 and 300mmØ, extra strength class for all other sizes.
	0.9m-1.2m	< 0.9m
	Type S + 150 conc. slab	Type Z
	Concrete Class 120 to BS:5911-1:2002 and vitrified clay to BS:65	Concrete Class 120 to BS:5911-1:2002 and vitrified clay to BS:65



**TYPE S BEDDING WITH CONCRETE SLAB PROTECTION**

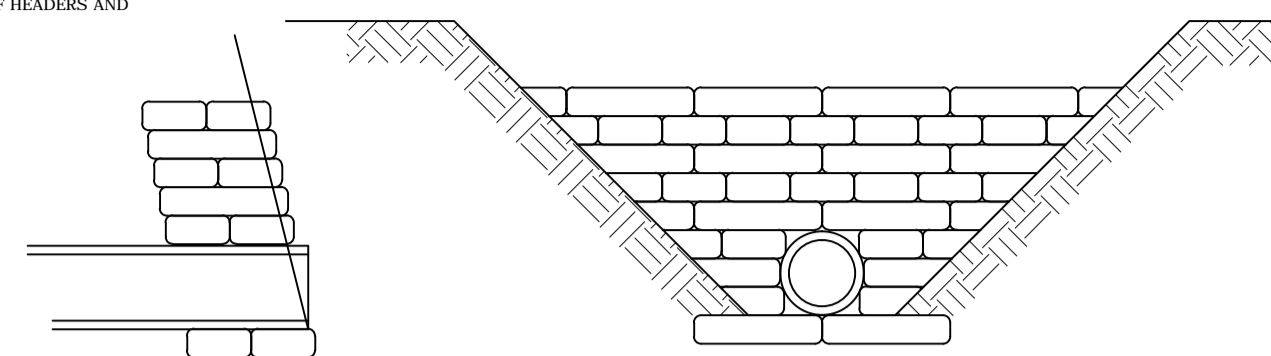
(GRANULAR BED & SURROUND)  
NOT TO SCALE



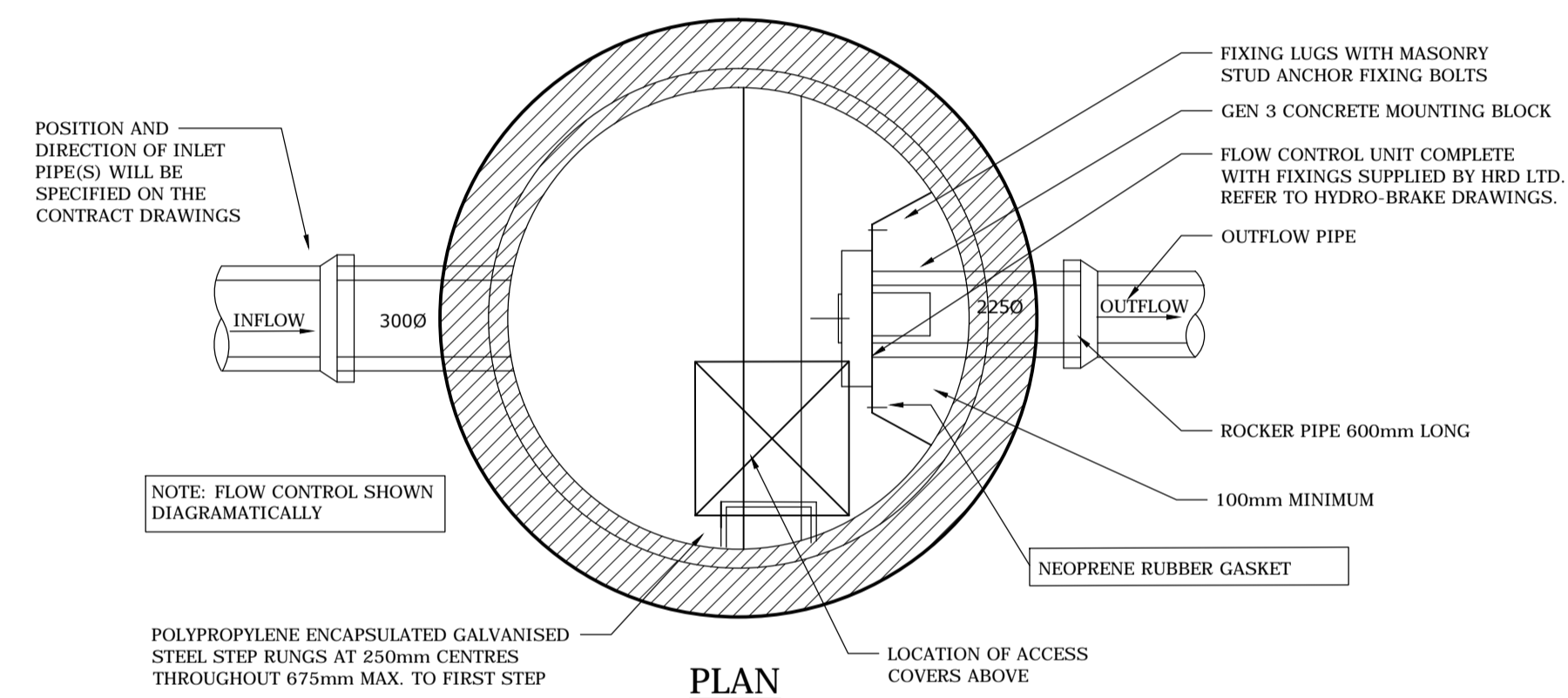
**TYPE S BEDDING**

(GRANULAR BED & SURROUND)  
NOT TO SCALE

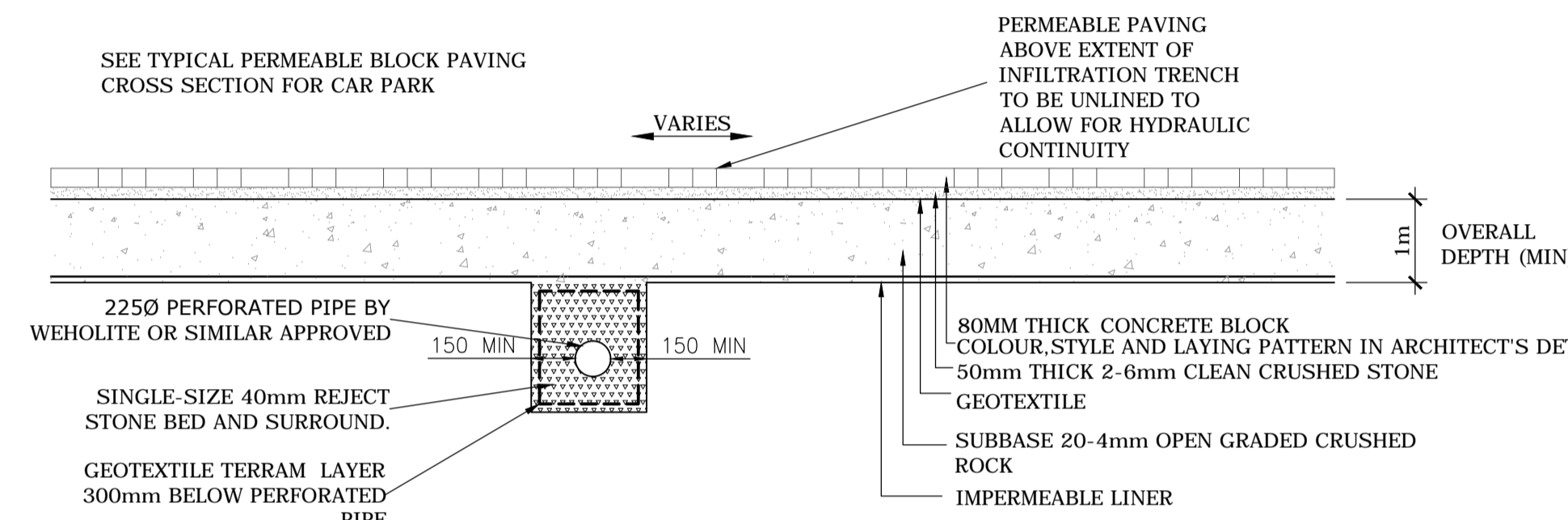
HESSIAN SAND BAGS (750x300mm UNFILLED) TO BE FILLED WITH CONCRETE MIX ST1 AND TO AVERAGE 450kg/275x100mm WHEN FILLED. Laid IN ALTERNATIVE COURSES OF HEADERS AND STRETCHERS.



**PRIVATE BAG WORK HEADWALL CONSTRUCTION DETAILS**

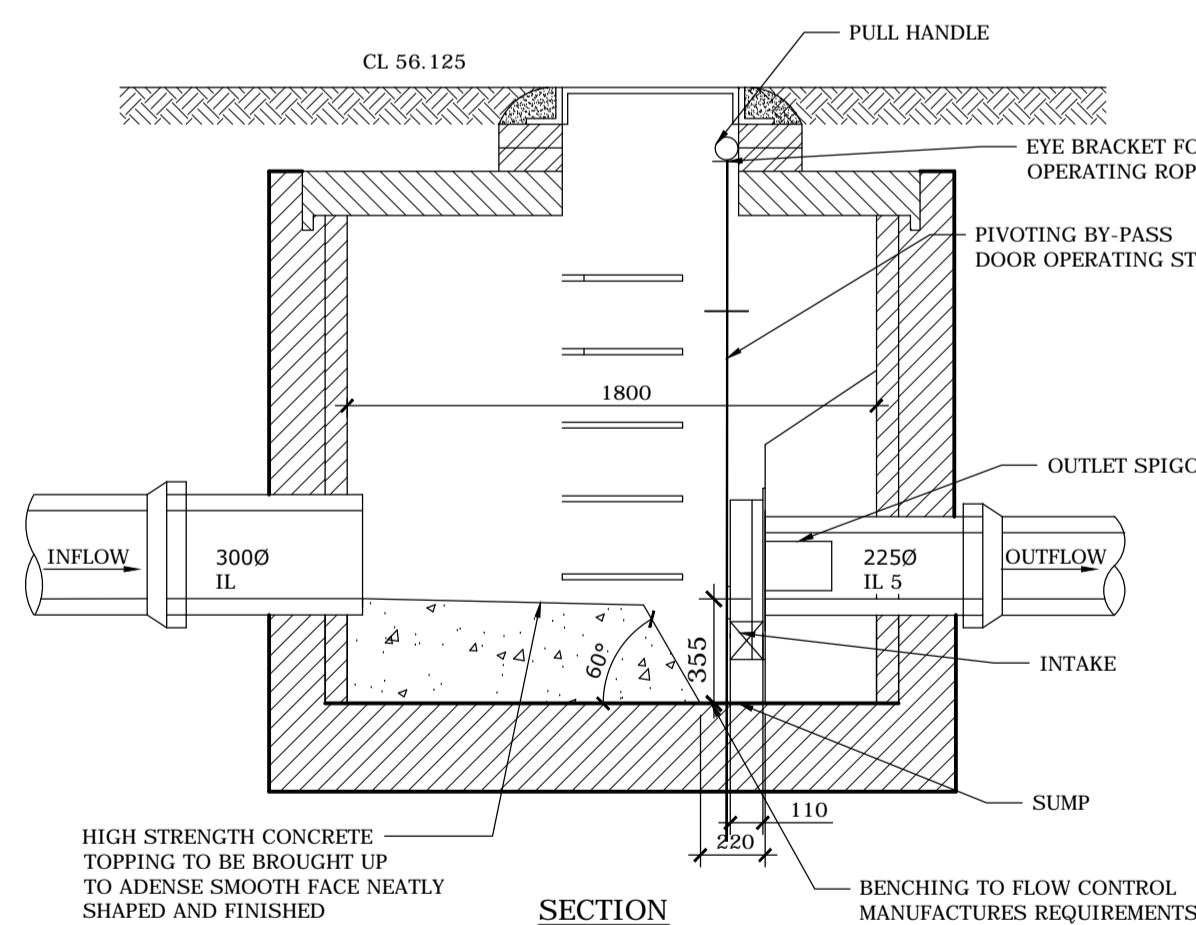


TECHNICAL SPECIFICATION		
CONTROL POINT	HEAD (m)	FLOW (l/s)
PRIMARY DESIGN	1.1330	4.8000
FLUSH-FLOW	0.3330	4.7970
KICK-FLO	0.7060	3.8590
MEAN FLOW		4.1890



**PERMEABLE PAVING DEAL**

SCALE 1:25

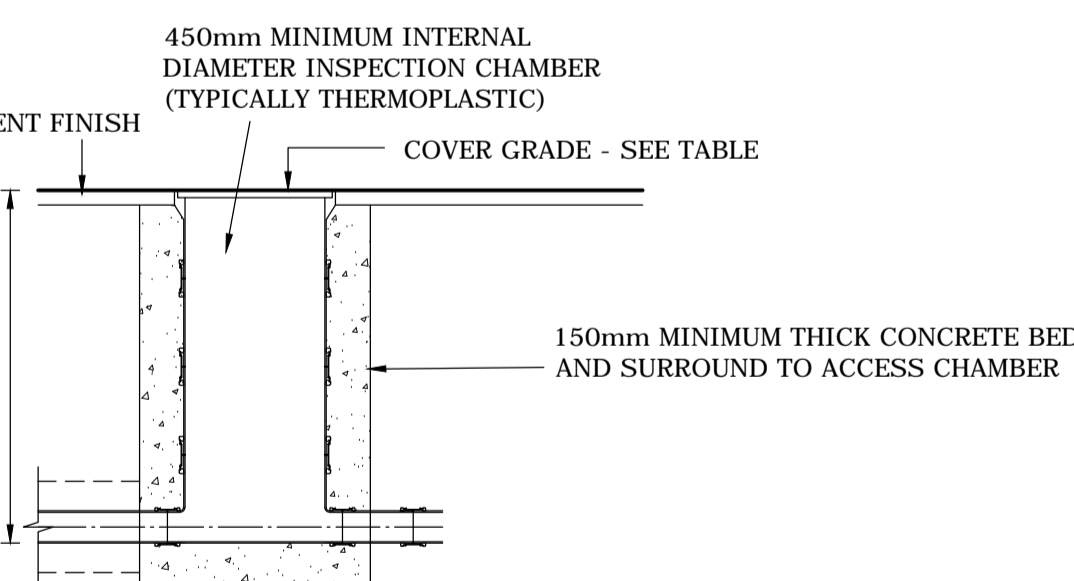
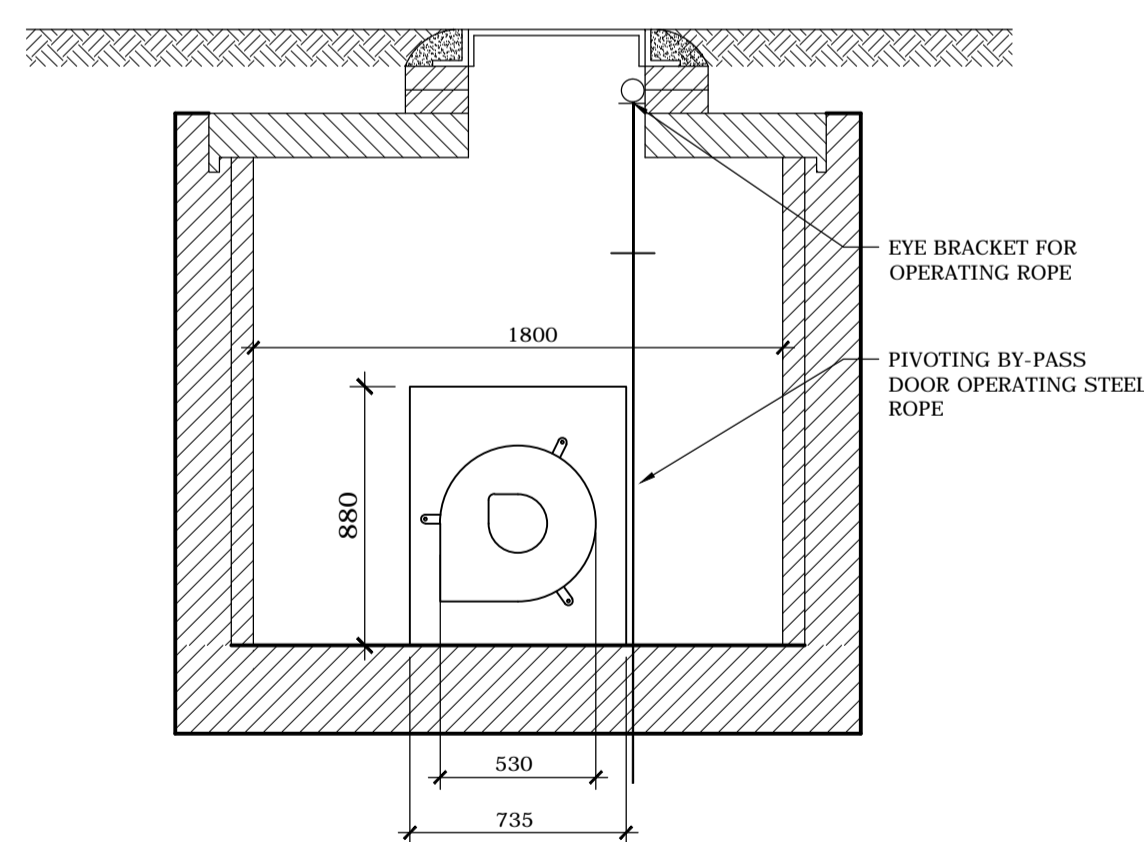


**TYPICAL FLOW CONTROL CHAMBER DETAIL**

NOT TO SCALE

FLOW CONTROL MANHOLE HEAD  
HYDROBRAKE FLOW CONTROL  
SHE-0102-4800-1133-4800

DESIGN HEAD(m) 0.95m  
FLOW (l/s) 0.6l/s



**TYPICAL MEDIUM DEPTH INSPECTION CHAMBER DETAIL FOR USE IN DRIVEWAYS/CAR PARKING AREAS (NOT SUBJECT TO HEAVY VEHICLE LOADING)**

SCALE 1:25

TABLE SHOWING PRIVATE MANHOLE/INSPECTION CHAMBER COVER GRADES AND AREAS OF USE	
COVER GRADE TO BS EN: 124	LOCATION
D400	FOR USE IN INDUSTRIAL ROADS AND PARKING AREAS ACCESSIBLE TO ALL TYPES OF ROAD VEHICLES INCLUDING HGV'S.
C250*	FOR USE IN PRIVATE ROADS OR PARKING AREAS eg. CAR PARKS AND MINOR PRIVATE ROADS ACCESSIBLE TO REFUSE VEHICLES, FIRE APPLIANCES ETC WITH POSSIBLE OCCASIONAL HGV USE.
B125	FOR USE IN FOOTWAYS, PEDESTRIAN AREAS, DRIVEWAYS AND CAR PARKS ACCESSIBLE BY LIGHT VEHICLES ONLY.
A15	FOR USE IN AREAS WHICH CAN ONLY BE USED BY PEDESTRIANS AND PEDAL CYCLISTS
* D400 MAY BE USED IN LIEU OF C250 IF PREFERRED.	

REV	DATE	DESCRIPTION	DRAWN	CHKD
REVISIONS				

This drawing is to be read in conjunction with all other Engineer's drawings and all other project information. Any discrepancy between the Engineer's drawings and other project information is to be reported to the Engineer immediately.



Project

**ATTWOOD MANOR, HALSTEAD**

Title

**ADOPTABLE DRAINAGE CONSTRUCTION DETAILS**

Client

**STOW HEALTHCARE LTD**

**Richard Jackson Engineering Consultants**

847 The Crescent, Colchester, Essex CO4 9JQ Tel: 01206 228800  
Unit 0040, 6th Floor, Aldgate Tower, 2 Leman Street, London, E1 8FA Tel: 020 7448 9910  
5 Quern House, Mill Court, Great Shelford, Cambs CB22 5LD Tel: 01223 314794  
4 The Old Church, St. Matthews Road, Norwich, Norfolk NR1 1SP Tel: 01603 230260  
The Wheelhouse, Bonds Mill, Stonehouse, Gloucestershire GL10 3HF Tel: 01172 020070  
Email Address: mail@rj.uk.com Website: http://www.rj.uk.com

Scale	Drawn	Date
N.T.S @ A1	A.A.	MARCH 2022
Project Manager	Checked	Approved
M.G.	N.B.	M.G.
Status	Suitability Description	RJL Project No :
P1	SUITABLE FOR APPROVAL	48842
project	originator	zone
48842	RJL	NA
	level	type
	NA	DR
	role	number
	C	0002
	revision	-