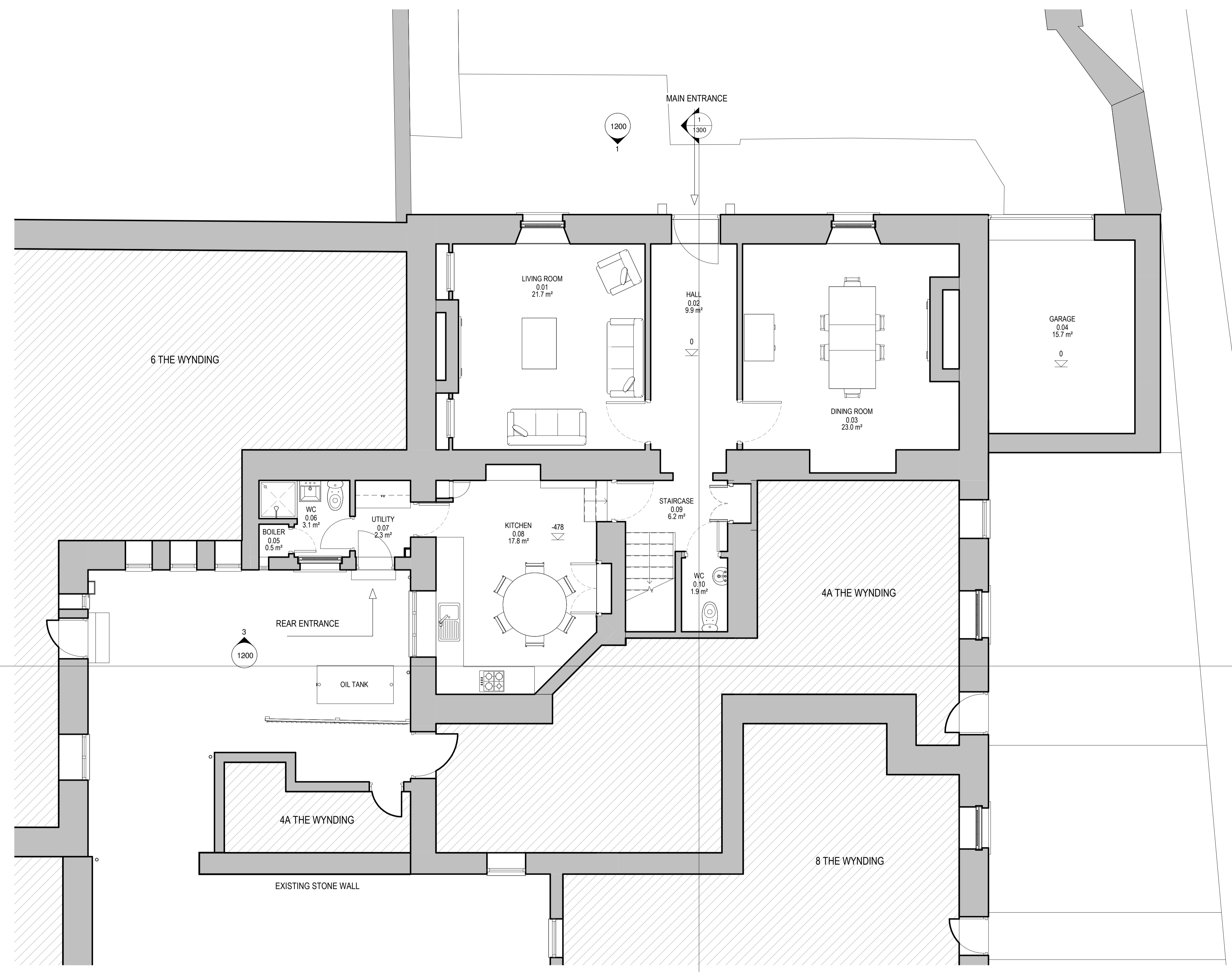
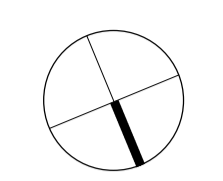


This drawing is copyright. It is sent to you in confidence and must not be reproduced or disclosed to third parties without our prior permission. Do not scale from this drawing. This drawing is to be read in conjunction with all relevant consultants, specialist manufacturers drawings and specifications. Any discrepancies in dimensions or details on or between these drawings should be drawn to our attention. All dimensions are in millimetres unless noted otherwise. Any surveyed information incorporated within this drawing cannot be guaranteed as accurate unless confirmed by field dimension.

REV.	DESCRIPTION	BY:	CHK:	DATE
P01	FIRST ISSUE.	AW	NT	2021/09/13
P02	OIL TANK INDICATED 4A THE WYNDING UPDATED IN LINE WITH THE APPROVED PLANNING DRAWINGS. ISSUED FOR PRE-APPLICATION PLANNING ADVICE.	AW	NT	2021/11/17
P03	AMENDMENTS TO THE DRAWINGS IN PREPARATION FOR PLANNING SUBMISSION.	AW	NT	2022/07/22
P04	ISSUED FOR PLANNING.	AW	NT	2022/08/05



NOTES

GROUND FLOOR GIA	119.7 m ²
FIRST FLOOR GIA	99.2 m ²
SECOND FLOOR GIA	73.6 m ²
TOTAL GIA	292.3 m²

NEIGHBOURING PROPERTIES

ROOM SCHEDULE - EXISTING GROUND FLOOR

NUMBER	NAME	AREA
0.01	LIVING ROOM	21.68 m ²
0.02	HALL	9.86 m ²
0.03	DINING ROOM	23.02 m ²
0.04	GARAGE	15.7 m ²
0.05	BOILER	0.54 m ²
0.06	WC	3.11 m ²
0.07	UTILITY	2.34 m ²
0.08	KITCHEN	17.75 m ²
0.09	STAIRCASE	6.23 m ²
0.10	WC	1.89 m ²
		102.12 m²

PURPOSE: **PLANNING**
PROJECT: **THE WYNDING HOUSE**

DESCRIPTION: **EXISTING GROUND FLOOR PLAN**

DRAWN BY:	SCALE:	SHEET SIZE:	DATE:
AW	1 : 50	A1	13/09/2021
PRO. NO.:	ORIG. VOLUME:	LEVEL:	TYPE:
21100	HL 00	00	DR A
			BOLE NUMBER:
			1100 S4
			SUITABILITY:
			P04

HOWARTH LITCHFIELD

Lisson House, Belmont Business Park, Durham, DH1 1TW, T. Durham (0191) 3849470 E. hlp@hlpuk.com
16-25 Bastwick Street, London, EC1V 3PS T. (0207) 2518905 E. hlp@hlpuk.com
www.howarthlitchfield.com

© Copyright and all intellectual property rights remain vested in Howarth Litchfield Partnership Limited

EXISTING GROUND FLOOR PLAN
1 : 50

