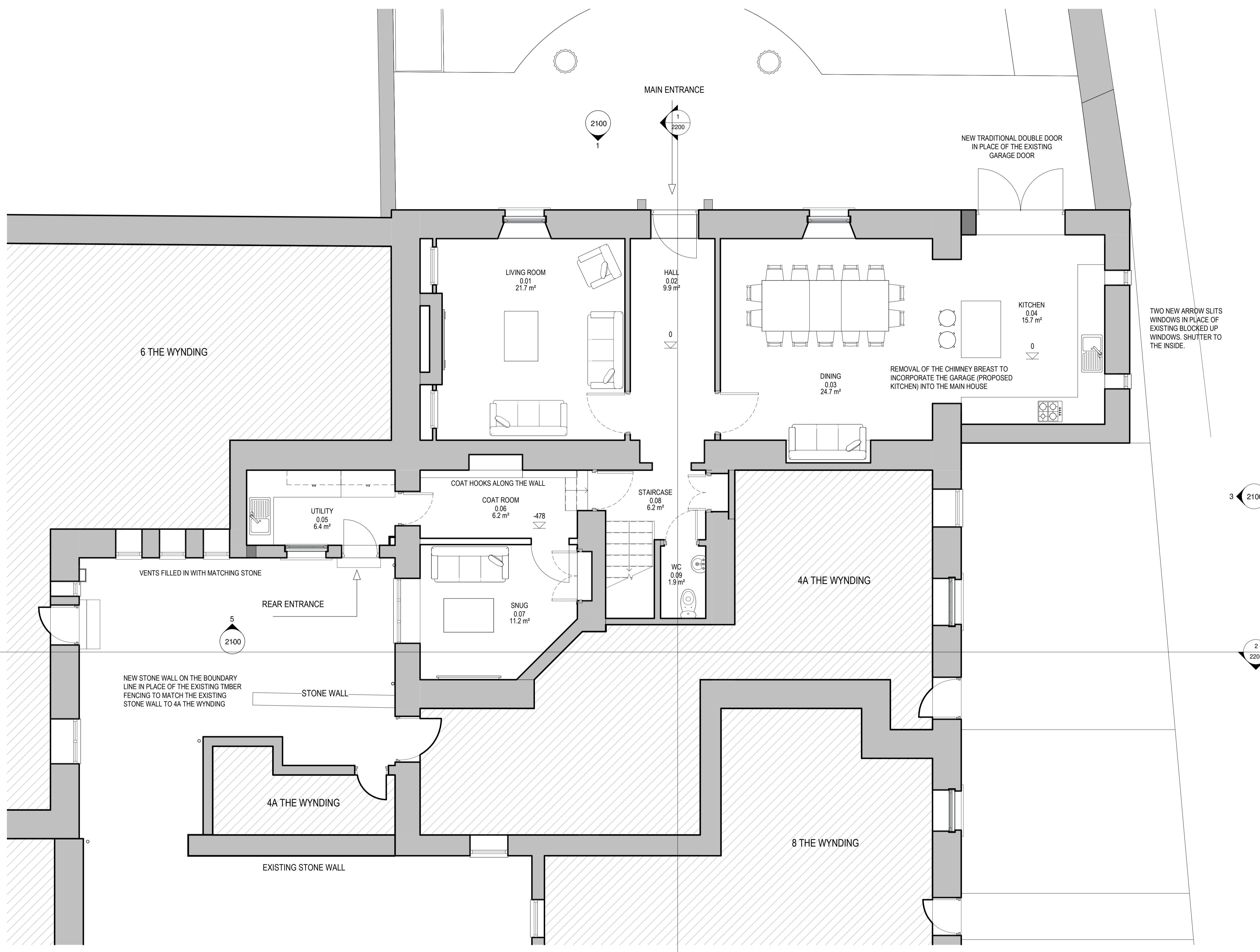
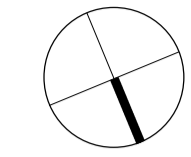


This drawing is copyright. It is sent to you in confidence and must not be reproduced or disclosed to third parties without our prior permission. Do not scale from this drawing. This drawing is to be read in conjunction with all relevant consultants, specialist manufacturers drawings and specifications. Any discrepancies in dimensions or details on or between these drawings should be drawn to our attention. All dimensions are in millimetres unless noted otherwise. Any surveyed information incorporated within this drawing cannot be guaranteed as accurate unless confirmed by field dimension.

REV.	DESCRIPTION	BY:	CHK:	DATE:
P01	ISSUED FOR PRE-APPLICATION PLANNING ADVICE.	AW	NT	2021/11/17
P02	AMENDMENTS TO THE DRAWINGS IN PREPARATION FOR PLANNING SUBMISSION.	AW	NT	2022/07/22
P03	ISSUED FOR PLANNING.	AW	NT	2022/08/05



**NOTES**

GROUND FLOOR GIA	119.7 m <sup>2</sup>
FIRST FLOOR GIA	99.2 m <sup>2</sup>
SECOND FLOOR GIA	73.6 m <sup>2</sup>
<b>TOTAL GIA</b>	<b>292.3 m<sup>2</sup></b>

NEIGHBOURING PROPERTIES

**ROOM SCHEDULE - PROPOSED GROUND FLOOR**

NUMBER	NAME	AREA
0.01	LIVING ROOM	21.68 m <sup>2</sup>
0.02	HALL	9.86 m <sup>2</sup>
0.03	DINING	24.71 m <sup>2</sup>
0.04	KITCHEN	15.7 m <sup>2</sup>
0.05	UTILITY	6.44 m <sup>2</sup>
0.06	COAT ROOM	6.19 m <sup>2</sup>
0.07	SNUG	11.2 m <sup>2</sup>
0.08	STAIRCASE	6.23 m <sup>2</sup>
0.09	WC	1.89 m <sup>2</sup>
		<b>103.89 m<sup>2</sup></b>

PURPOSE: **PLANNING**  
PROJECT: **THE WYNDING HOUSE**

DESCRIPTION: **PROPOSED GROUND FLOOR PLAN**

DRAWN BY: **AW** SCALE: **1:50** SHEET SIZE: **A1** DATE: **15/11/2021**

PRO. NO.	ORIG.	VOLUME	LEVEL	TYPE	ROLE	NUMBER	SUITABILITY	REV.
21100	HL	00	DR	A	2000	S4	P03	



Lisson House, Belmont Business Park, Durham, DH1 1TW. T: Durham (0191) 3849470 E: hlp@hlpuk.com  
16-25 Bastwick Street, London, EC1V 3PS T: (0207) 2518905 E: hlp@hlpuk.com  
www.howarthlitchfield.com

Copyright and all intellectual property rights remain vested in Howarth Litchfield Partnership Limited

**PROPOSED GROUND FLOOR PLAN**  
1 : 50

