

This drawing is copyright. It is sent to you in confidence and must not be reproduced or disclosed to third parties without our prior permission. Do not scale from this drawing. This drawing is to be read in conjunction with all relevant consultants, specialist manufacturers drawings and specifications. Any discrepancies in dimensions or details on or between these drawings should be drawn to our attention. All dimensions are in millimetres unless noted otherwise. Any surveyed information incorporated within this drawing cannot be guaranteed as accurate unless confirmed by field dimension.

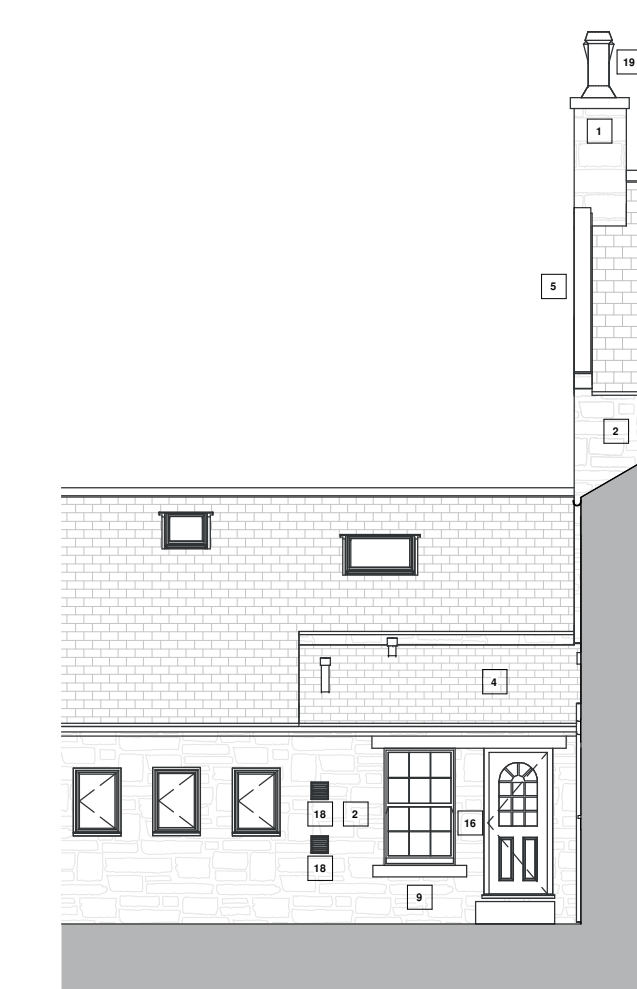
REV.	DESCRIPTION	BY:	CHK:	DATE:
P01	ISSUED FOR PRE-APPLICATION PLANNING ADVICE.	AW	NT	2021/11/17
P02	AMENDMENTS TO THE DRAWINGS IN PREPARATION FOR PLANNING SUBMISSION.	AW	NT	2022/07/22
P03	ISSUED FOR PLANNING.	AW	NT	2022/08/05



**EXISTING SOUTH ELEVATION**  
1 : 100



**EXISTING WEST ELEVATION**  
1 : 100



**EXISTING NORTH ELEVATION 1**  
1 : 100



**EXISTING NORTH ELEVATION 2**  
1 : 100



**EXISTING EAST ELEVATION**  
1 : 100

**KEY:**

- 1 COURSED RUBBLE STONE MASONRY
- 2 COURSED RANDOM RUBBLE STONE MASONRY
- 3 UNCOURSED RUBBLE STONE MASONRY
- 4 WELSH SLATE ROOF
- 5 STONE WATER TABLE AND STONE COPING KNEELER
- 6 OPEN-PEDIMENT STONE PORCH
- 7 VICTORIAN 6 OVER 6 PANES SASH TIMBER WINDOW
- 8 8 PANES FIXED uPVC WINDOW
- 9 6 OVER 6 PANES SASH uPVC WINDOW
- 10 FEATURE FIXED ARCHED uPVC WINDOW
- 11 TOP HUNG 6 OVER 6 PANES CASEMENT uPVC WINDOW
- 12 TRIPLE CASEMENT uPVC WINDOW
- 13 CENTRE PIVOT uPVC ROOF WINDOWS
- 14 2 PANEL 12 PANE GLAZED TIMBER DOOR
- 15 UP AND OVER uPVC GARAGE DOOR
- 16 2 PANEL GLAZED ARCHED uPVC DOOR
- 17 BLACK uPVC RAINWATER GOODS
- 18 WHITE uPVC LOUVRE VENT
- 19 CREAM CHIMNEY POTS

PURPOSE: **PLANNING**  
PROJECT: **THE WYNDING HOUSE**

DESCRIPTION: **EXISTING ELEVATIONS**

DRAWN BY: **AW** SCALE: **1 : 100** SHEET SIZE: **A1** DATE: **17/11/2021**

PRO. NO.	ORIG.	VOLUME	LEVEL	TYPE	BOLE NUMBER	SUITABILITY	REV.
21100	HL	00	XX	DR	A	1200	S4 P03



Lisson House, Belmont Business Park, Durham, DH1 1TW, T. Durham (0191) 3849470 E. hlp@hlpuk.com  
16-25 Bastwick Street, London, EC1V 3PS T. (0207) 2518905 E. hlp@hlpuk.com  
www.howarthlitchfield.com

© Copyright and all intellectual property rights remain vested in Howarth Litchfield Partnership Limited

