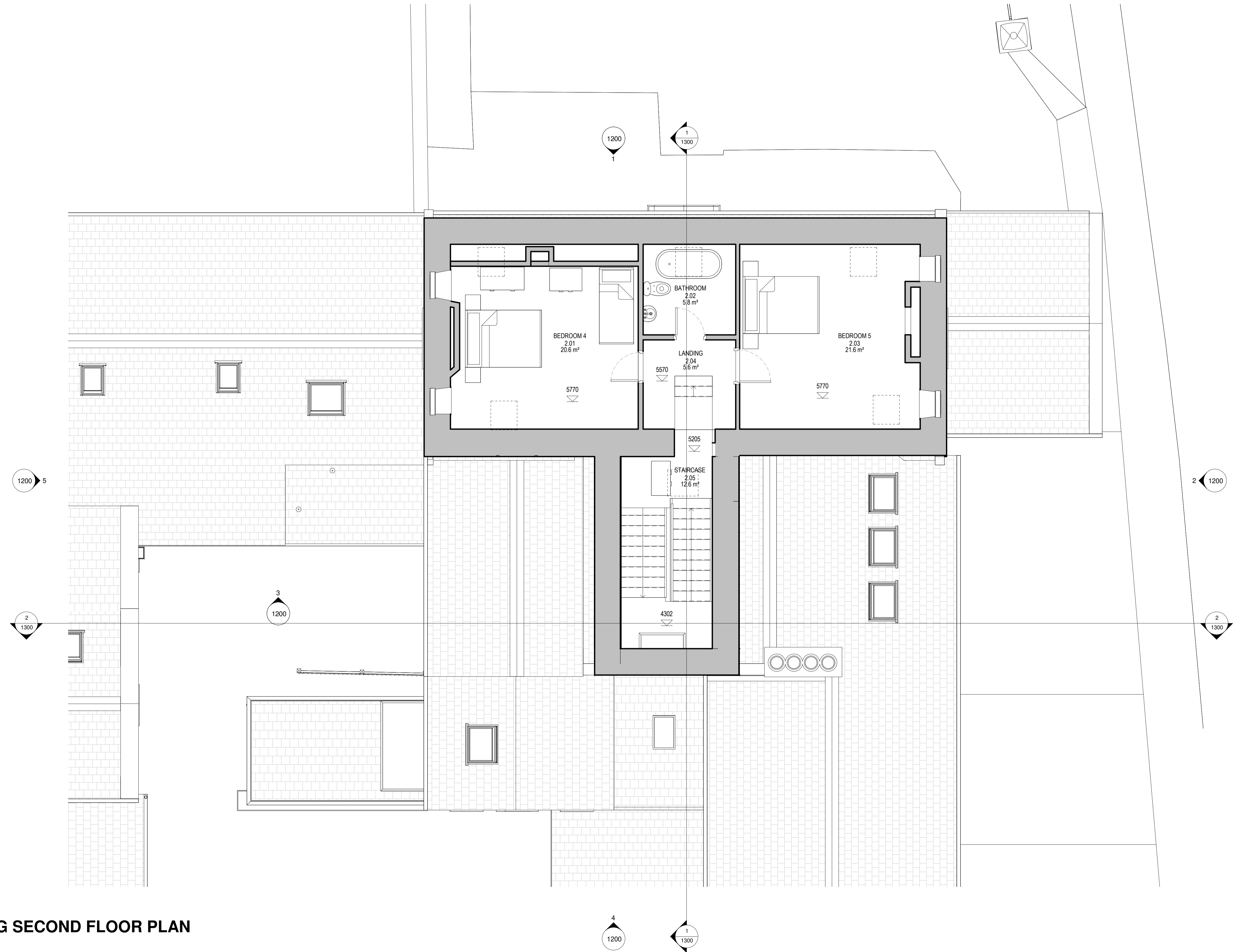
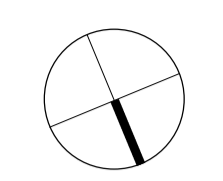


This drawing is copyright. It is sent to you in confidence and must not be reproduced or disclosed to third parties without our prior permission. Do not scale from this drawing. This drawing is to be read in conjunction with all relevant consultants, specialist manufacturers drawings and specifications. Any discrepancies in dimensions or details on or between these drawings should be drawn to our attention. All dimensions are in millimetres unless noted otherwise. Any surveyed information incorporated within this drawing cannot be guaranteed as accurate unless confirmed by field dimension.

REV.	DESCRIPTION	BY:	CHK:	DATE
P01	FIRST ISSUE.	AW	NT	2021/09/13
P02	OIL TANK INDICATED 4A THE WYNDING UPDATED IN LINE WITH THE APPROVED PLANNING DRAWINGS. ISSUED FOR PRE-APPLICATION PLANNING ADVICE.	AW	NT	2021/11/17
P03	AMENDMENTS TO THE DRAWINGS IN PREPARATION FOR PLANNING SUBMISSION.	AW	NT	2022/07/22
P04	ISSUED FOR PLANNING.	AW	NT	2022/08/05



NOTES

GROUND FLOOR GIA	119.7 m ²
FIRST FLOOR GIA	99.2 m ²
SECOND FLOOR GIA	73.6 m ²
TOTAL GIA	292.3 m²

NEIGHBOURING PROPERTIES

ROOM SCHEDULE - EXISTING SECOND FLOOR

NUMBER	NAME	AREA
2.01	BEDROOM 4	20.57 m ²
2.02	BATHROOM	5.77 m ²
2.03	BEDROOM 5	21.56 m ²
2.04	LANDING	5.63 m ²
2.05	STAIRCASE	12.61 m ²
		66.13 m ²

PURPOSE: **PLANNING**
PROJECT: **THE WYNDING HOUSE**

DESCRIPTION: **EXISTING SECOND FLOOR PLAN**

DRAWN BY: **AW** SCALE: **1:50** SHEET SIZE: **A1** DATE: **13/09/2021**

PRO. NO.	ORIG.	VOLUME	LEVEL	TYPE	ROLE	NUMBER	SUITABILITY	REV.
21100	HL	00	02	DR	A	1102	S4	P04



Lidson House, Belmont Business Park, Durham, DH1 1TW, T. Durham (0191) 3849470 E. hlp@hlpuk.com
16-25 Bastwick Street, London, EC1V 3PS T. (0207) 2518905 E. hlp@hlpuk.com
www.howarthlitchfield.com

© Copyright and all intellectual property rights remain vested in Howarth Litchfield Partnership Limited

EXISTING SECOND FLOOR PLAN
1 : 50

