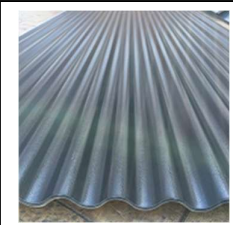
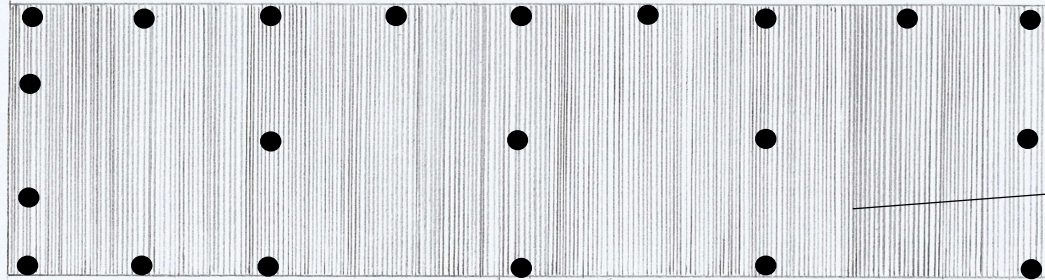


Pole Barn Materials (Not to Scale)

PLAN VIEW



Black corrugated steel on roof and rear (eastern wall)

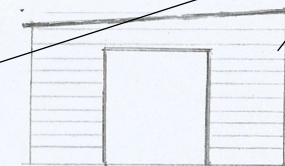


Waney edge timber cladding.

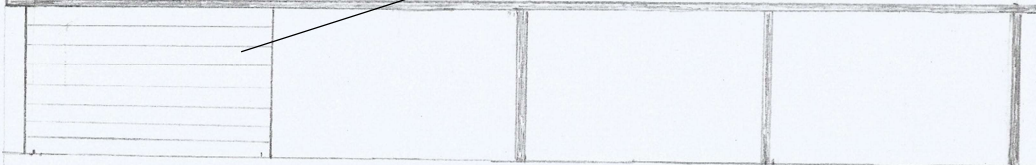
EASTERN ELEVATION



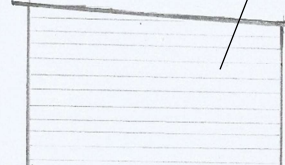
NORTHERN ELEVATION



WESTERN ELEVATION



SOUTHERN ELEVATION



21x 150mm diameter treated wooden posts/poles buried 500cm into ground will support and anchor structure (see plan view above for positions).