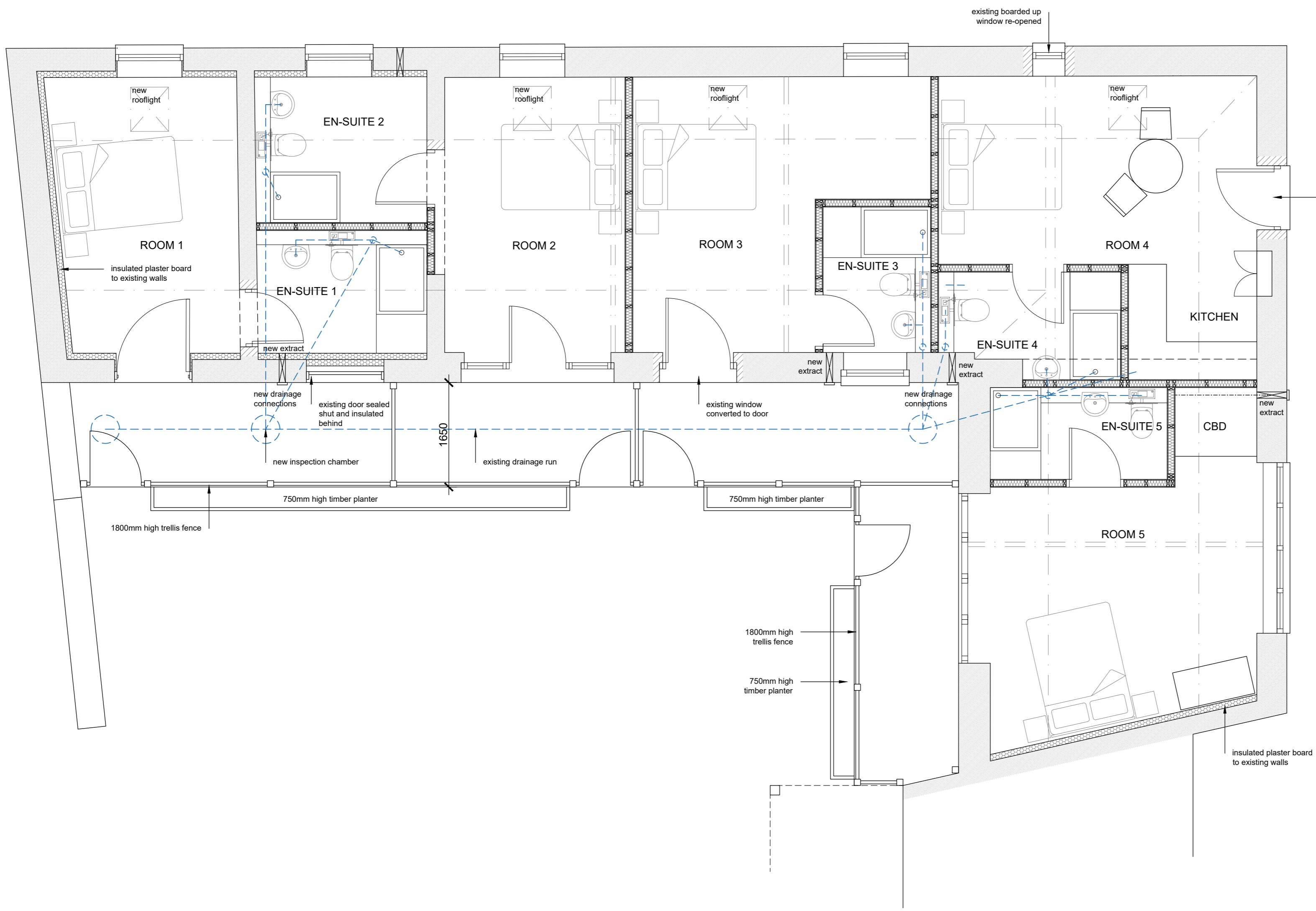


Responsibility is not accepted for errors made by others in scaling from this drawing. If this drawing is enclosed as digital data for the titled project, it should be used for reference purposes only to assist in coordination. Sutton Cox Architects take no responsibility for its accuracy. This drawing is copyright of Sutton Cox Architects and may not be copied or reproduced without permission.



| Revision Schedule | | |
|-------------------|-------------|------|
| Rev | Description | Date |
| | | |
| | | |
| | | |



existing window widened and converted to door ground level adjusted to suit

Drawing Status:
PLANNING

Client:
QUALITY INNS

Project:
THE FOCESTER

Drawing Description:
GROUND FLOOR - PROPOSED OPTION 2

| | | |
|----------------|-------------------|-----------------|
| Scale: 1:50 | Sheet Size: A2 | Date: MAY 22 |
|----------------|-------------------|-----------------|

| | | |
|------------------|---------------------|--------------------|
| Drawn By: INT | Designed By: INT | Checked By: INT |
|------------------|---------------------|--------------------|

| | | |
|------------------|-------------------|-----------------|
| Job No: 22018 | Drawing No: 07 | Revision: P1 |
|------------------|-------------------|-----------------|

114 Bath Road, Cheltenham, Gloucestershire, GL53 7JX
www.suttoncox.com | 01242 529169

