

**22.386 Deben Farm**

Discharge Of Conditions - Materials

August 2022

21/00947/FUL  
Condition 3

For all materials detailed in this document, samples are to be provided on site if necessary, or similar approved.

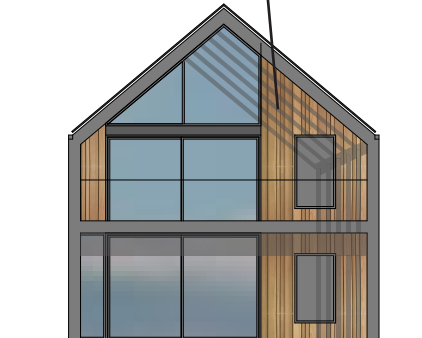
# Plot 1

Standing Seam Roof

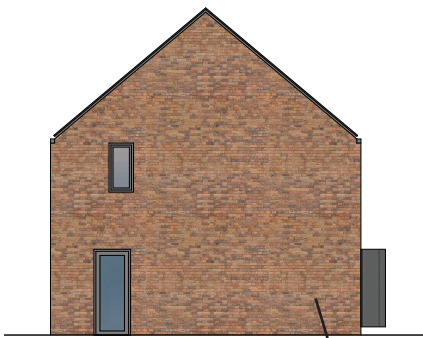


FRONT ELEVATION (NORTH EAST) 1:100

Timber Cladding



SIDE ELEVATION (SOUTH EAST) 1:100



SIDE ELEVATION (NORTH WEST) 1:100

Brick



REAR ELEVATION (SOUTH WEST) 1:100

### **Standing Seam Roof**

Catnic Urban Standing Seam Roof  
Colour: Merlin (BS 18B25)

[catnic.com/products/ssr2-roofing-and-cladding/material-and-finishes](https://catnic.com/products/ssr2-roofing-and-cladding/material-and-finishes) or similar



### **Timber Cladding**

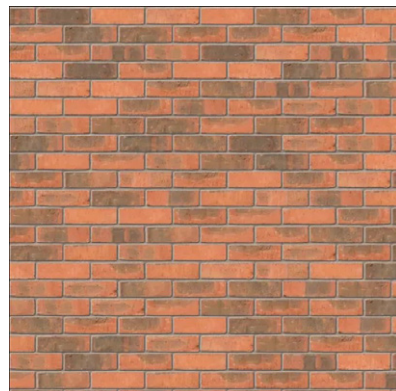
Light Stained Vertical Laid Larch Cladding



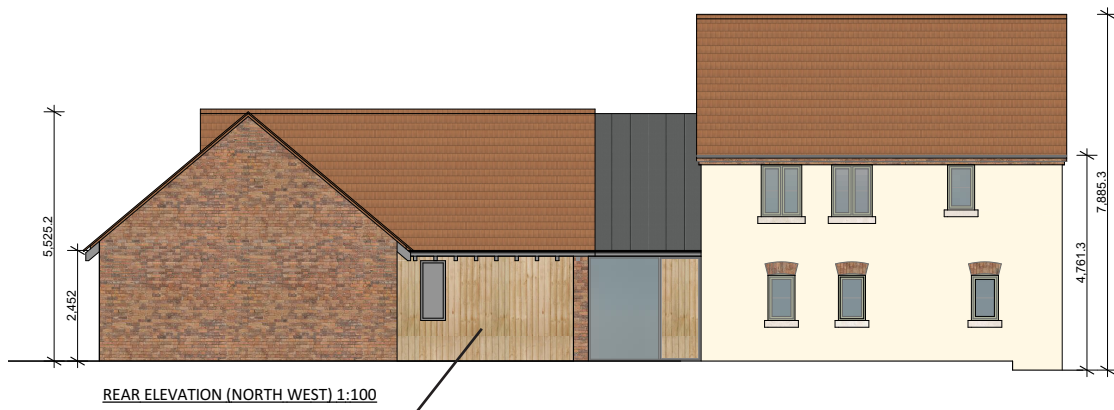
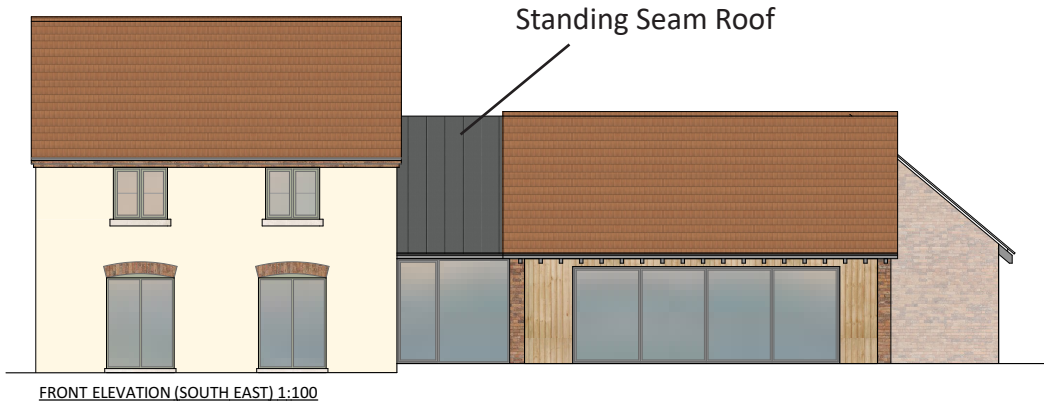
### **Brick**

Ibstock Birtley Olde English Brick 65mm Red

[jewson.co.uk/p/ibstock-birtley-olde-english-65mm-BRRED062](https://jewson.co.uk/p/ibstock-birtley-olde-english-65mm-BRRED062) or similar



# Plot 2



### **Tiled Roof**

Arcadia Pantile Wiernburger/Sandtoft

[roofingoutlet.co.uk/products/471-sandtoft-arcadia-pantile](http://roofingoutlet.co.uk/products/471-sandtoft-arcadia-pantile) or similar



### **Standing Seam Roof**

Catnic Urban Standing Seam Roof  
Colour: Merlin (BS 18B25)

[catnic.com/products/ssr2-roofing-and-cladding/material-and-finishes](http://catnic.com/products/ssr2-roofing-and-cladding/material-and-finishes) or simialr



### **Timber Cladding**

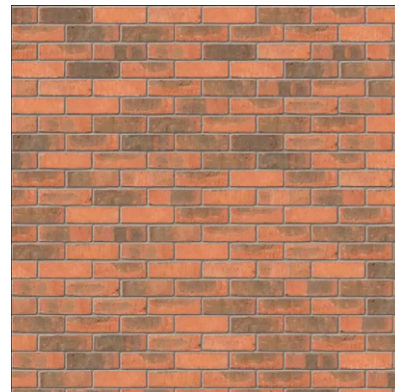
Light Stained Vertical Laid Larch Cladding



### **Brick**

Ibstock Birtley Olde English Brick 65mm Red

[jewson.co.uk/p/ibstock-birtley-olde-english-65mm-BRRED062](http://jewson.co.uk/p/ibstock-birtley-olde-english-65mm-BRRED062) or similar



### **Render**

Cream Through-Colour Render

[insulationsuperstore.co.uk/product/saint-gobain-weberpral-m-through-coloured-one-coat-render-25kg.html](http://insulationsuperstore.co.uk/product/saint-gobain-weberpral-m-through-coloured-one-coat-render-25kg.html) or similar



# Plot 3

Tiled Roof



FRONT ELEVATION (SOUTH EAST) 1:100



REAR ELEVATION (NORTH WEST) 1:100

Standing Seam Roof



SIDE ELEVATION (SOUTH EAST) 1:100

Timber Cladding



SIDE ELEVATION (NORTH EAST) 1:100

Brick

**Tiled Roof**

Arcadia Pantile Wiernburger/Sandtoft

[roofingoutlet.co.uk/products/471-sandtoft-ar-cadia-pantile](http://roofingoutlet.co.uk/products/471-sandtoft-ar-cadia-pantile) or similar



**Standing Seam Roof**

Catnic Urban Standing Seam Roof

Colour: Merlin (BS 18B25)

[catnic.com/products/ssr2-roofing-and-cladding/material-and-finishes](http://catnic.com/products/ssr2-roofing-and-cladding/material-and-finishes) or similar



**Timber Cladding**

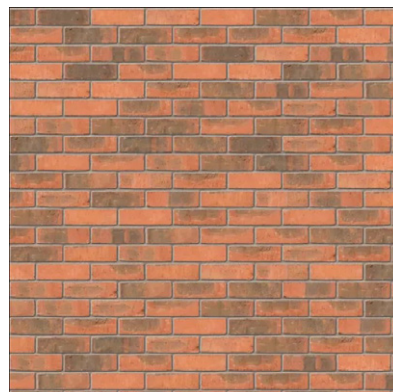
Light Stained Vertical Laid Larch Cladding



**Brick**

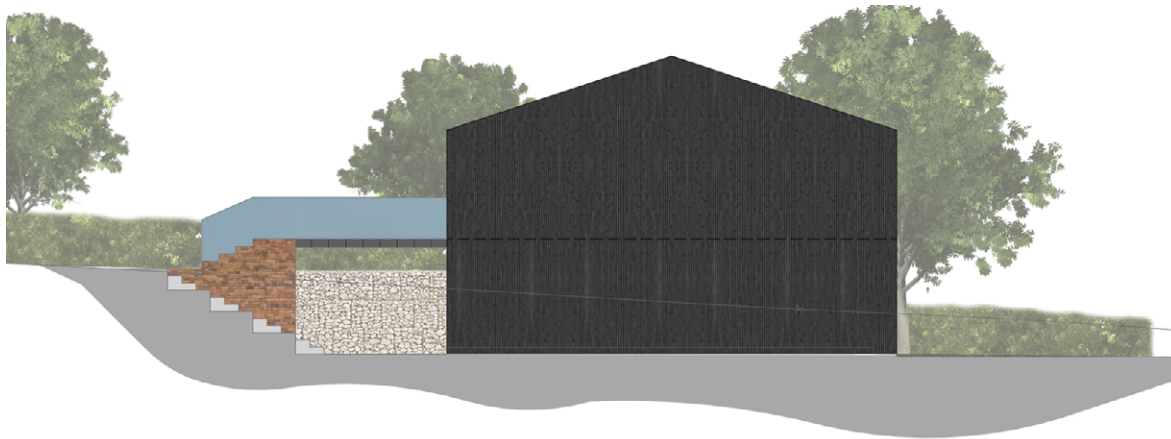
Ibstock Birtley Olde English Brick 65mm Red

[jewson.co.uk/p/ibstock-birtley-olde-english-65mm-BRRED062](http://jewson.co.uk/p/ibstock-birtley-olde-english-65mm-BRRED062) or similar

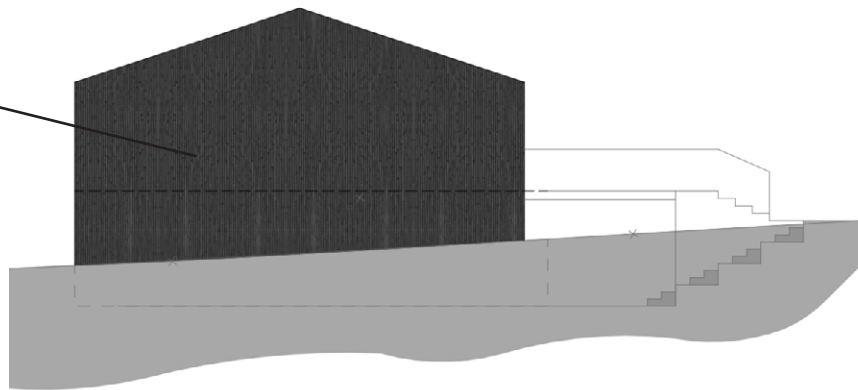


# Plot 4

Light Timber Cladding



Dark Timber Cladding



SIDE ELEVATION (NORTH WEST) 1:100

Standing Seam Roof



REAR ELEVATION (NORTH WEST) 1:100



**Standing Seam Roof**

Catnic Urban Standing Seam Roof  
Colour: Merlin (BS 18B25)

[catnic.com/products/ssr2-roofing-and-cladding/material-and-finishes](https://catnic.com/products/ssr2-roofing-and-cladding/material-and-finishes) or similar



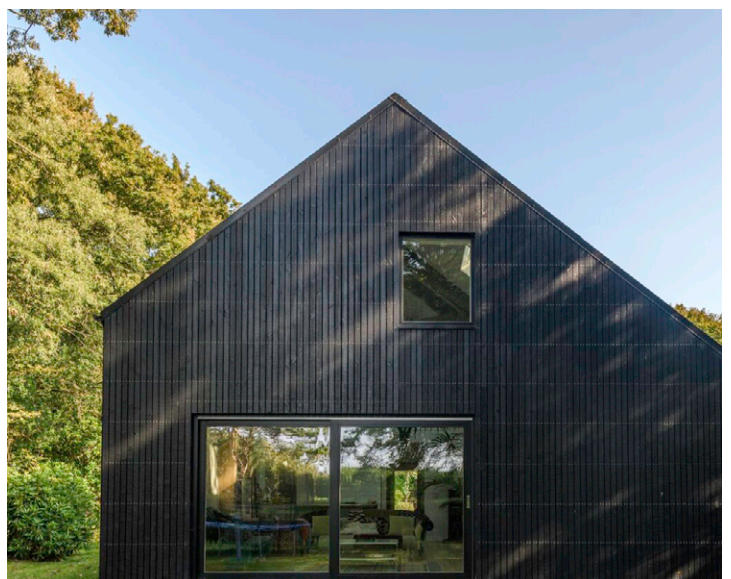
**Light Timber Cladding**

Light Stained Vertical Laid Larch Cladding

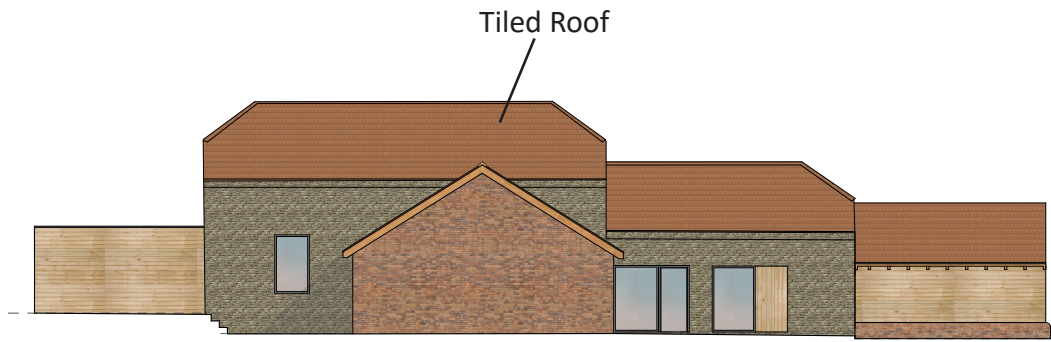


**Dark Timber Cladding**

Black Stained Vertical Laid Larch Cladding



# Plot 5



Back (South West) Elevation 1:100



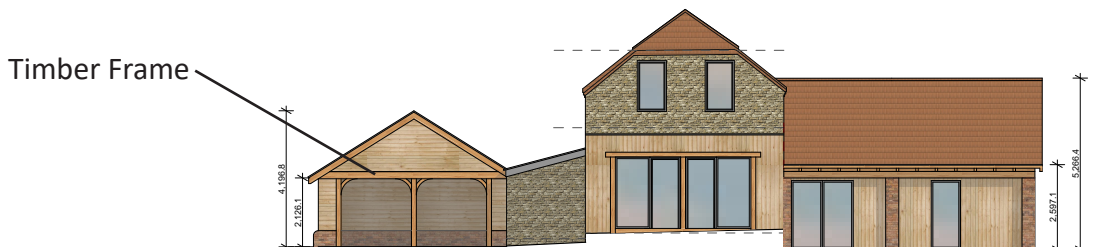
Front (North East) Elevation 1:100

Stone



Timber Cladding

Side (South East) Elevation 1:100



Timber Frame

Side (North West) Elevation 1:100

**Tiled Roof**

Arcadia Pantile Wiernburger/Sandtoft

[roofingoutlet.co.uk/products/471-sandtoft-arcadia-pantile](http://roofingoutlet.co.uk/products/471-sandtoft-arcadia-pantile) or similar



**Light Timber Cladding**

Light Stained Horizontal Laid Larch Cladding



**Stone**

Existing/to match Existing (as per 21/00947/FUL Condition 7 and 20/00460/FUL Condition 6)

**Timber Frame Elements**

Light Stained Oak to be used on exposed timber detailing and timber frame elements

[borderoak.com/outbuildings](http://borderoak.com/outbuildings) or similar

