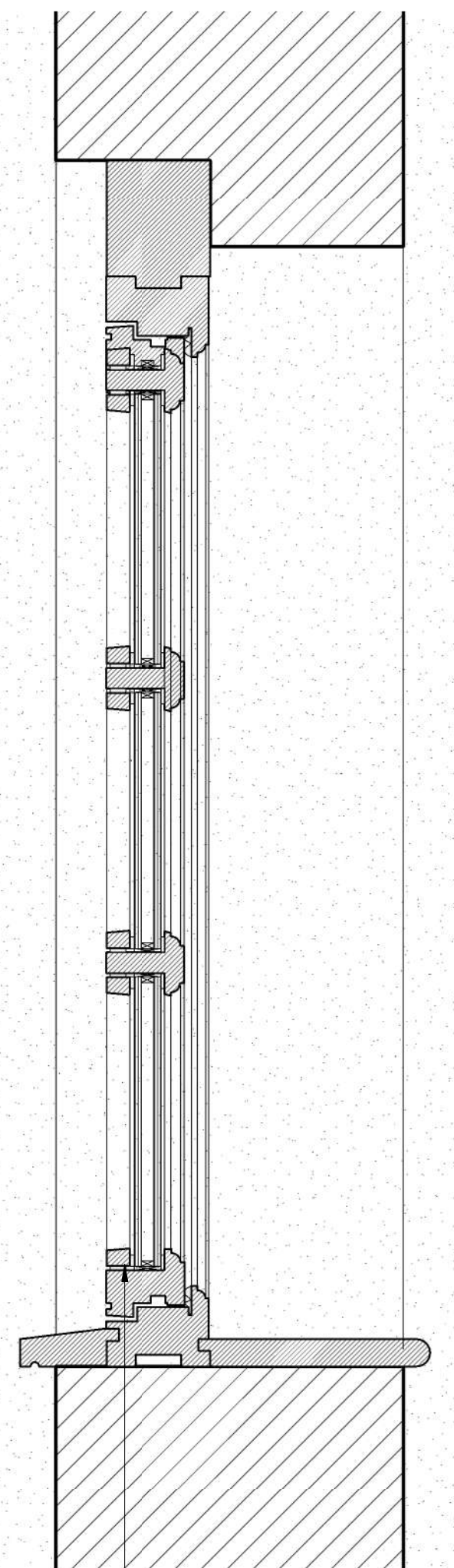
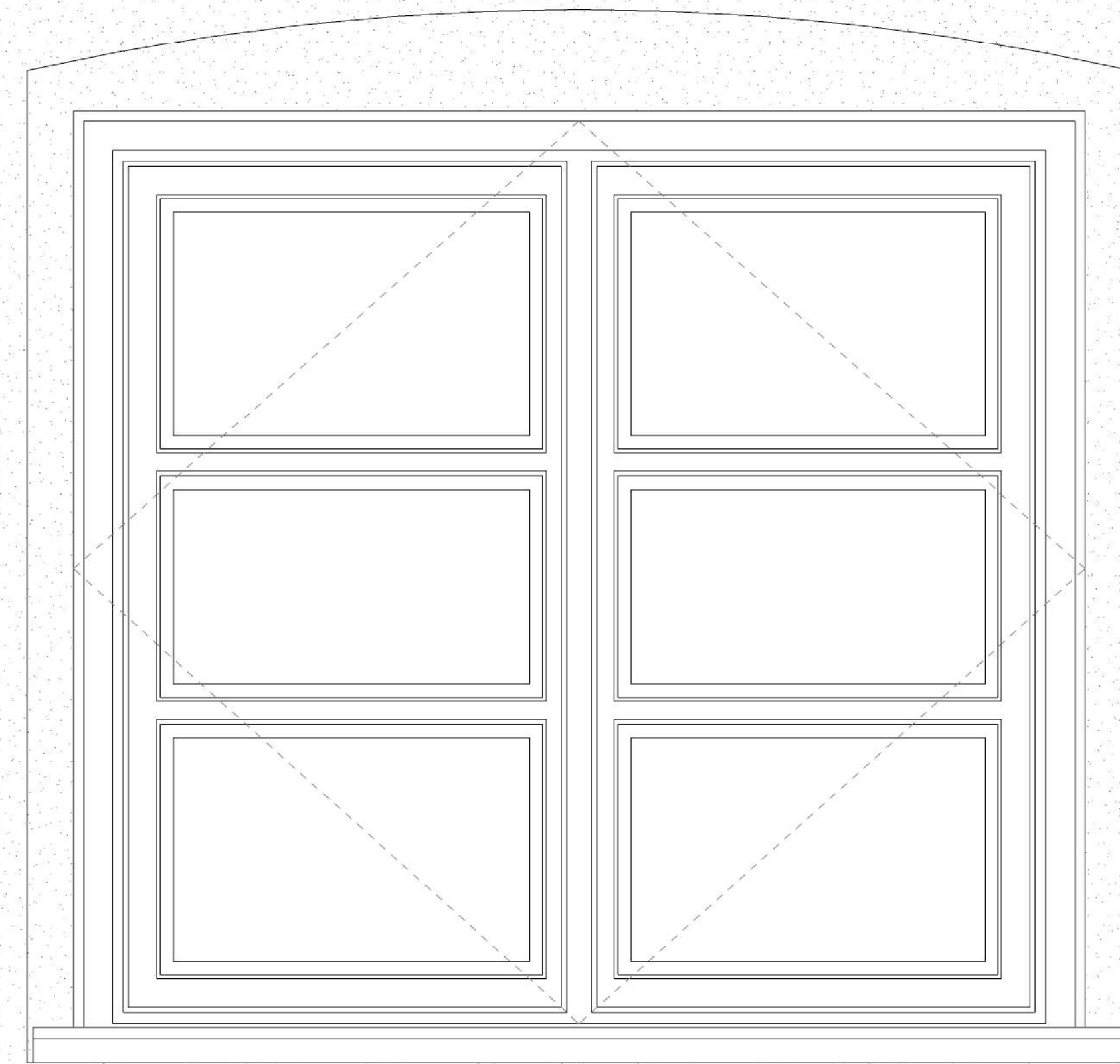


**High performance heritage timber windows**  
 Timber heritage windows  
 All to achieve min. U Value of 1.0 W/m²K



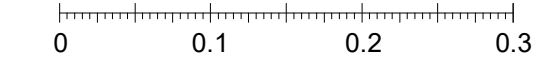
**High performance heritage timber windows**  
 Timber heritage windows  
 All to achieve min. U Value of 1.0 W/m²K

Casement window 02 detail  
 1 : 5

**Legend - Windows and doors**

**NOTE** - Please refer to the supporting heritage statement for window locations and photographic representation. As noted within the original listing statement, all windows and doors are 20th Century replacements for original windows. With this in mind, ALL windows and doors will be replaced with new high performance Heritage standard timber window casements and doors to retain the existing appearance and character of the building.

SCALE 1 : 5



Window detail 01  
 1 : 5

Rev	Description	Date	Dr by	App by
1	Issued for planning	14/09/22		
	original by	date created	approved by	
	Author	08/21/22	Approver	



client name		Scott and Gemma Edwards, Donna and Alan Cope	
project		Lea Grange	
drawing		Window detail 01 - Replacement casement windows	
computer file	plot date		
C:\projects\leagrange\01 - Replacement casement windows.dwg	14/09/22		
project number	scale		
P055_LG	As indicated	@A1	
drawing number	rev	issue status	
DR_P_05_050	1		

This drawing is to be read in conjunction with all related drawings. All dimensions must be checked and verified on site before commencing any work or producing shop drawings. The originator should be notified immediately of any discrepancy. This drawing is copyright and remains the property of EHA.