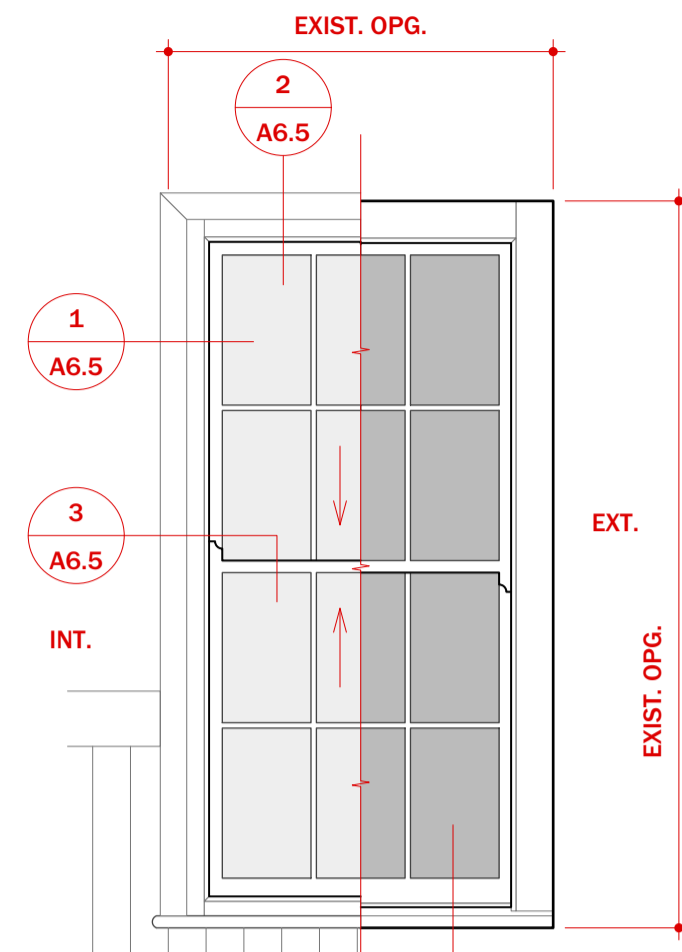
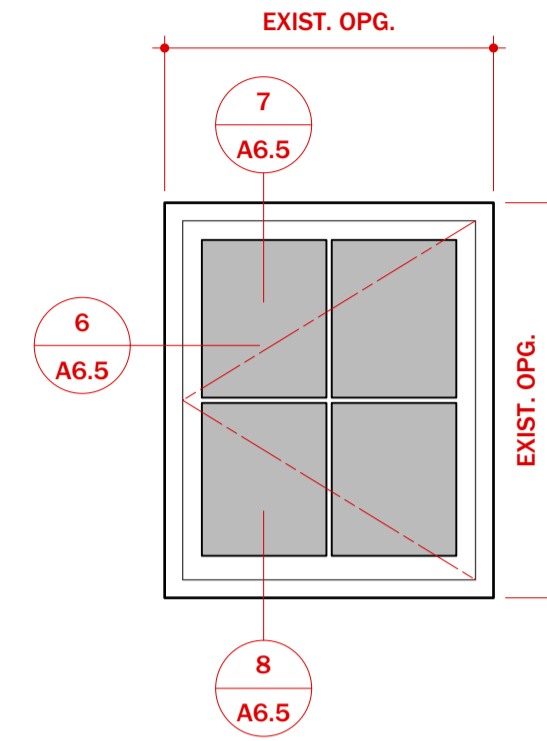


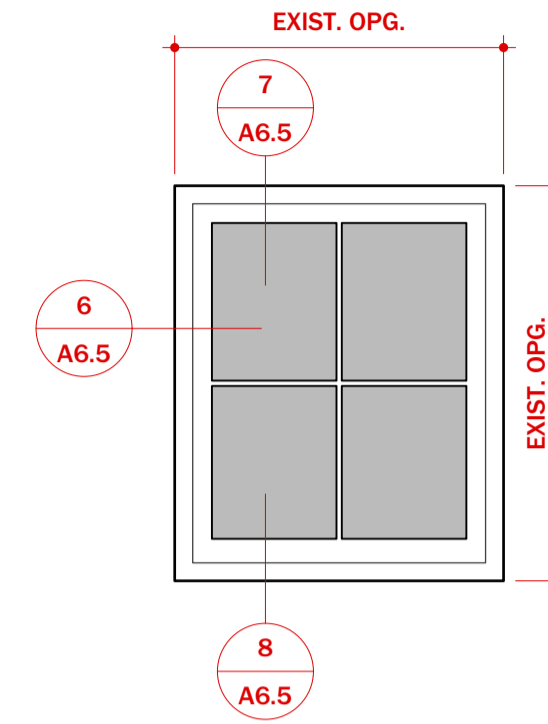
REPRODUCTION SASH WINDOW



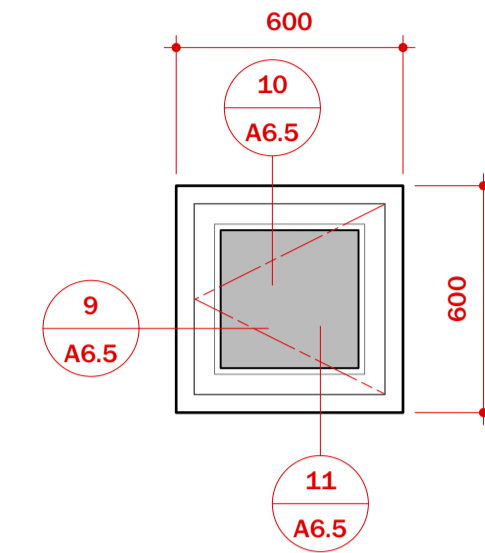
REPRODUCTION SASH WINDOW



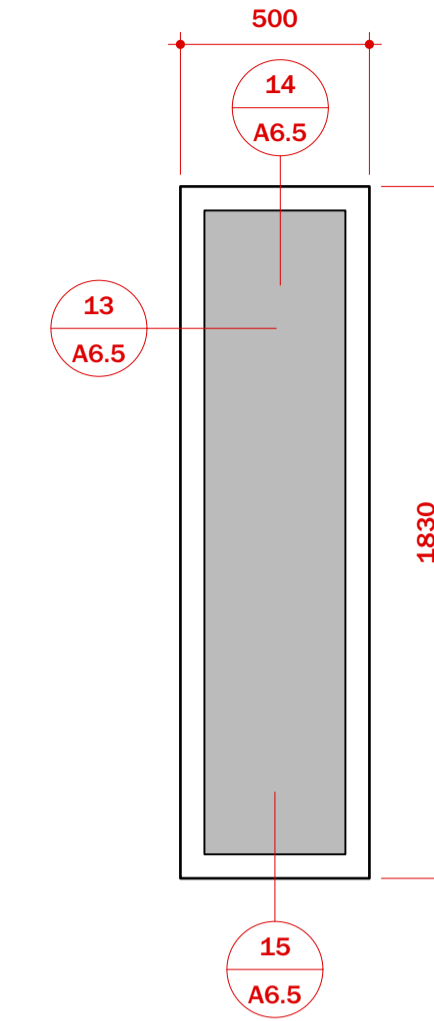
FLUSH CASEMENT WINDOW



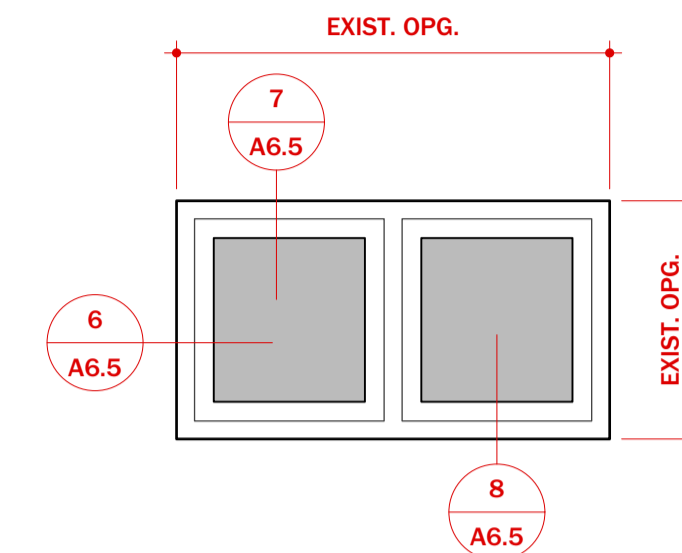
FLUSH CASEMENT WINDOW, FIXED



DOUBLE-GLAZED FLUSH CASEMENT WINDOW



FIXED LIGHT WINDOW @ STAFF BEDROOM



FLUSH CASEMENT WINDOW @
DORMITORY, FIXED SHUT

JOINERY GENERAL NOTES:

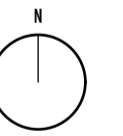
- WHERE GIVEN, DIMENSIONS ARE TO BE TREATED AS DESIGN INTENT ONLY.
- THE CONTRACTOR IS TO ENSURE ALL CRITICAL DIMENSIONS ARE VERIFIED ON SITE PRIOR TO ORDERING MATERIALS OR COMMENCING FABRICATION.
- WHERE STRUCTURAL OPENINGS ARE TO BE FORMED IN EXIST. BRK, THE CONTRACTOR IS TO ADJUST OPENING DIMENSIONS (+/- 25mm MAX. DEVIATION) TO SUIT EXIST. COURSING + TO GIVE A NEAT OVERALL APPEARANCE.
- THIS DWG. MUST BE READ IN CONJUNCTION WITH THE WINDOW + DOOR SCHEDULE(S) + ARCHITECT'S SPEC.
- WHERE REQUIRED, TRICKLE VENTILATION SPECIFICATIONS ARE INDICATED IN THE WINDOW + DOOR SCHEDULE(S).
- U.N.O. GLAZING <900MM ABV. F.F.L. TO BE TOUGHENED OR LAMINATED TO ACHIEVE CLASS 3 OF BS EN 12600.
- U.N.O. WHERE INSTALLED IN A DOOR OR SIDE PANEL HAVING A PANE WIDTH >900MM, INCREASE GLAZING PERFORMANCE TO ACHIEVE CLASS 2 OF BS EN 12600.
- ALL NEW WINDOWS AND EXT. DOORS TO COMPLY WITH PAS 24: 2016.
- WHERE APPLICABLE LETTER PLATES TO HAVE MAX. APERTURE OF 260 X 40 AND LOCATED TO RESTRICT ACCESS TO ANYONE ATTEMPTING TO REMOVE KEYS FROM WITHIN THE BUILDING.

PROJECT
**REFURBISHMENT OF
BRYNTAIL COTTAGE,
LLANDILOES**

BRYNTAIL COTTAGE CHARITY	
DATE:	02/01/2021
PROJECT NO:	19/76
REVISION:	DATE
1. WINDOW TYPES 'V' + '7' DELETED	02/07/21
2.	
3.	
4.	
5.	

- NOTES
- DO NOT SCALE FROM THIS DRAWING.
 - THIS DRAWING IS TO BE READ IN CONJUNCTION WITH ALL OTHER PROJECT DOCUMENTS. ANY DISCREPANCIES ARE TO BE REPORTED TO THE ARCHITECT.
 - WHEN ORDERED FOR CONSTRUCTION, THIS DRAWING FORMS PART OF THE CONTRACT. ALL INFORMATION TO BE CHECKED BY CONTRACTOR FOR SITE ACCURACY AND FIT.
 - DRAWINGS ARE SUBJECT TO RELEVANT STATUTORY APPROVALS AND SITE SURVEYS.

**NOT FOR
CONSTRUCTION**



WINDOW ELEVATIONS