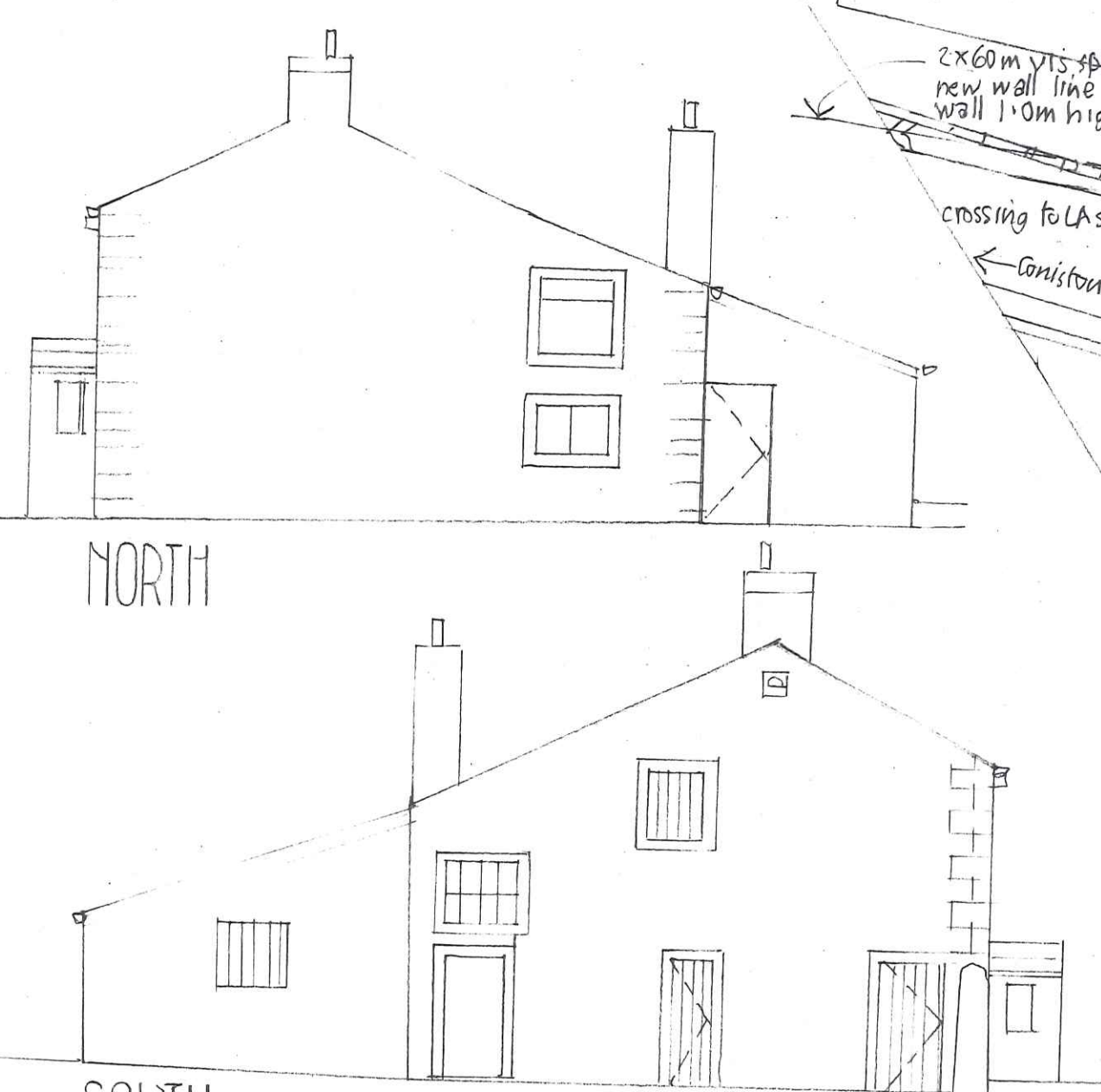


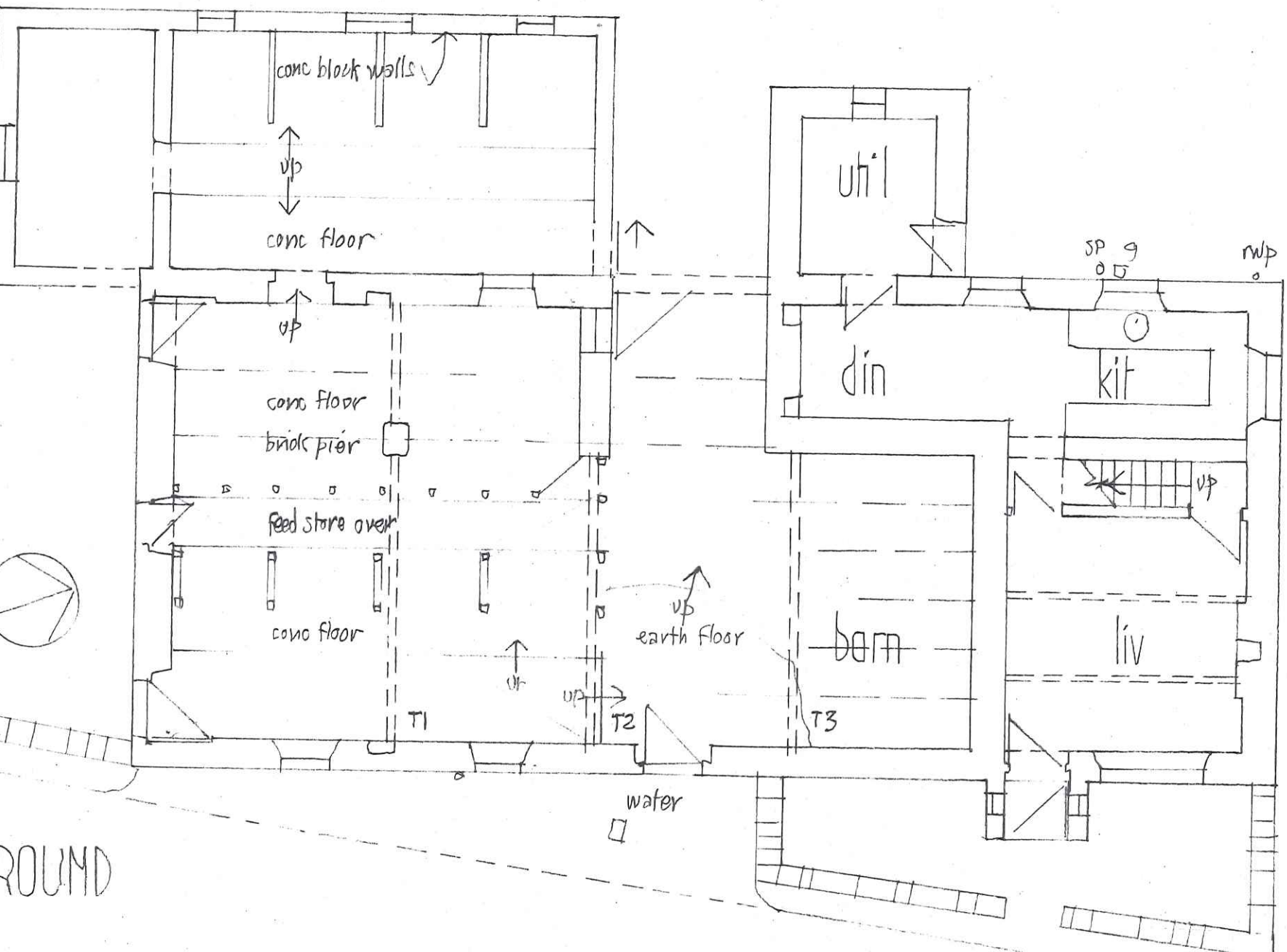
EXISTING



NORTH

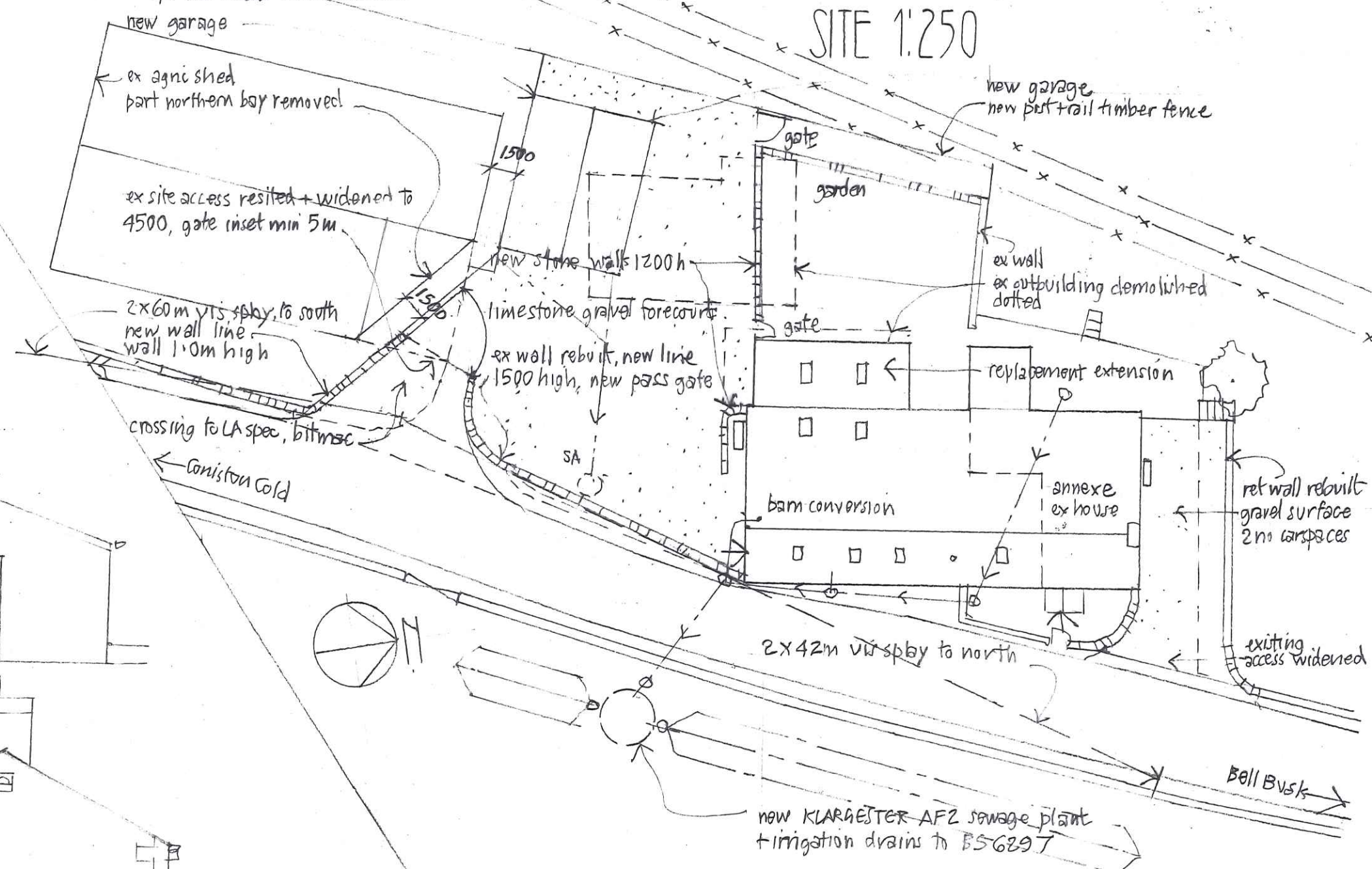
SOUTH

WEST EAST



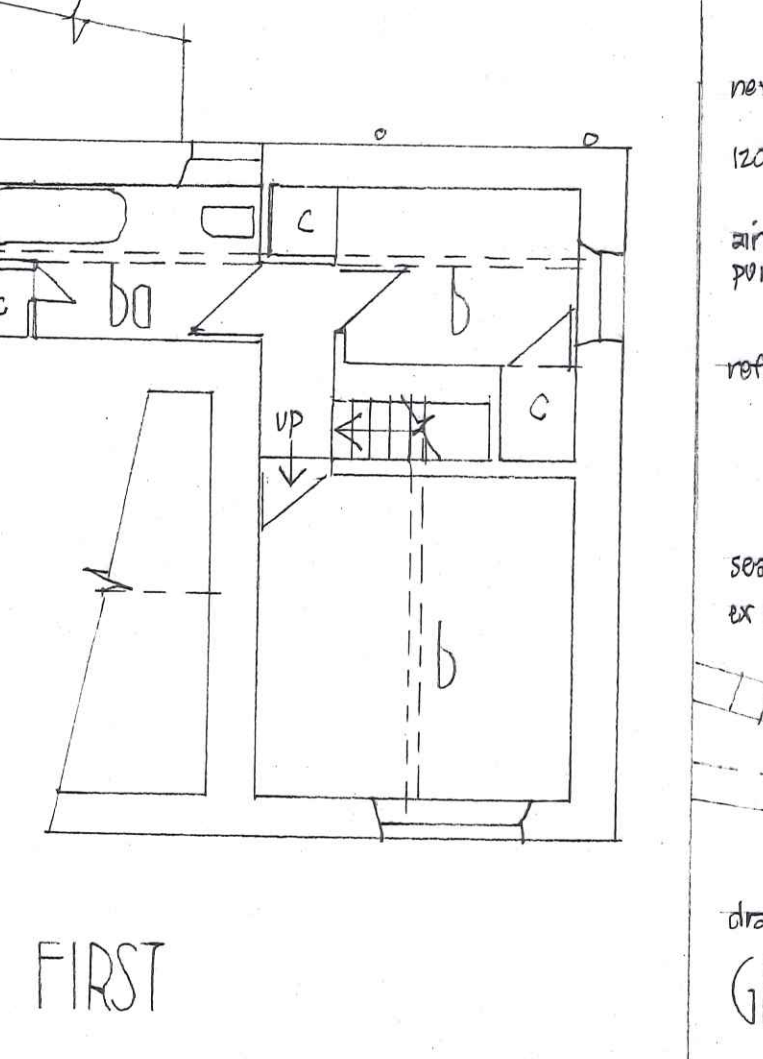
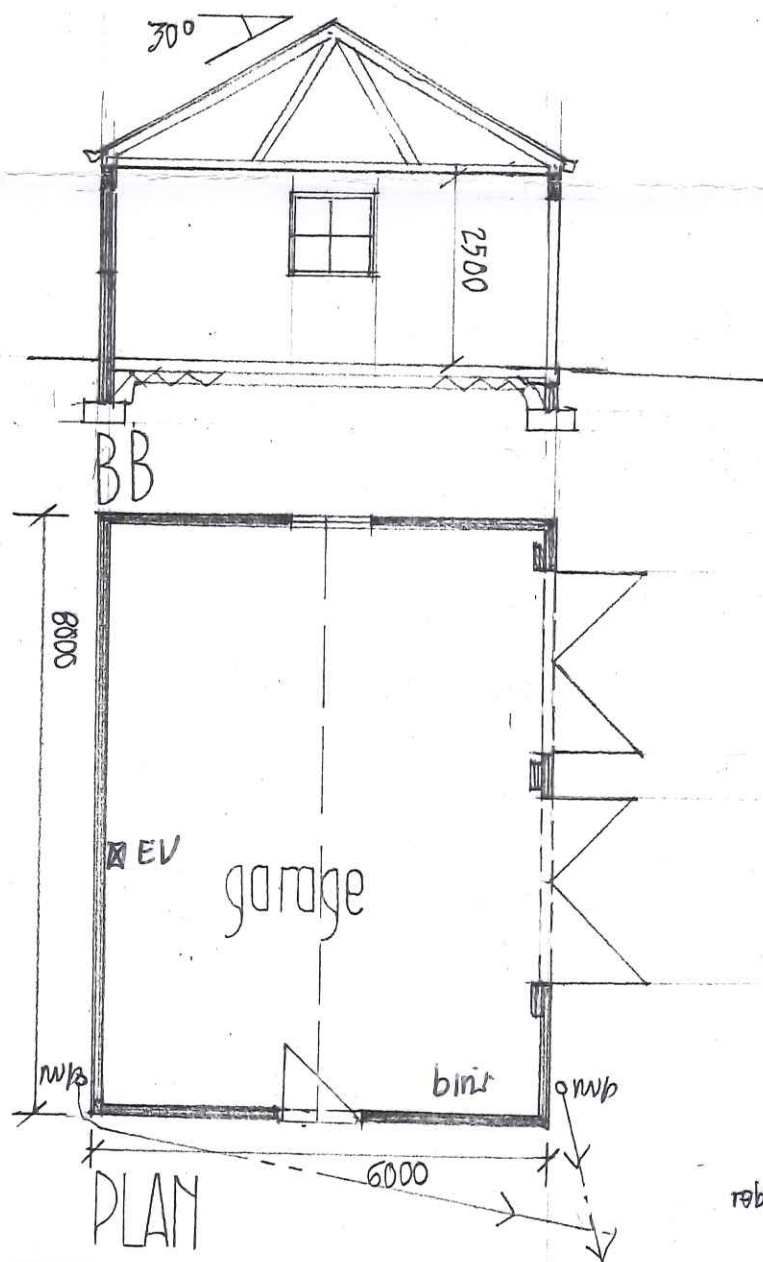
GROUND

SITE 1:250



conversion:  
 roof - ex stone slate relaid, quantity made up to match, flush fit Velux  
 walls - ex stone/brick repointed, reclaimed stone to match  
 windows - painted timber  
 doors - painted timber  
 rv goods - black seamless aluminium troughing

garage:  
 roof - grey composite panels on trussed rafters  
 walls - 150 conc block, baffles, larch boards  
 windows - painted timber  
 doors - larch boards, strap hinges  
 rv goods - black seamless alum troughing

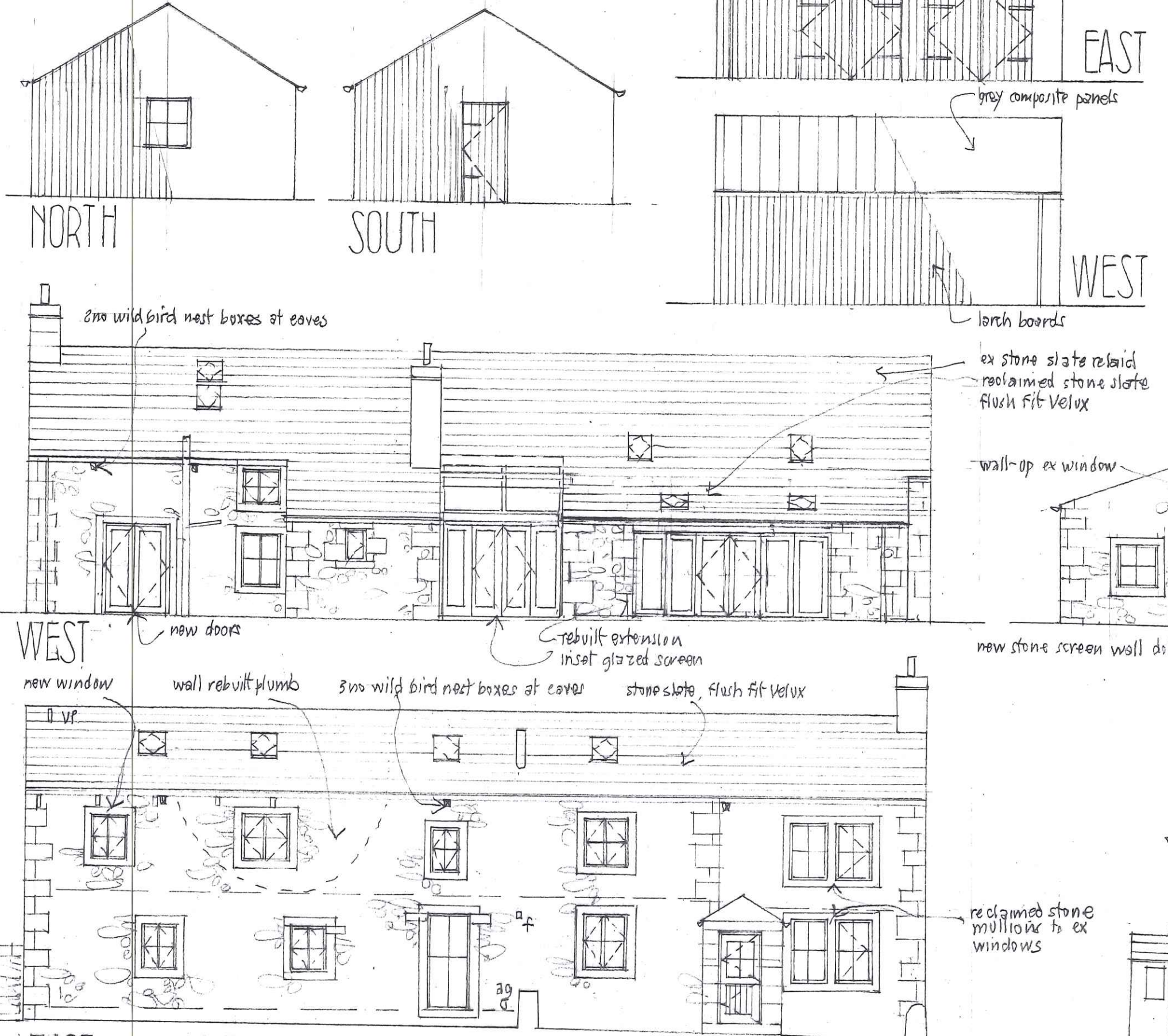


FIRST

GROUND

PROPOSED

new garage elevations



NORTH

SOUTH

EAST

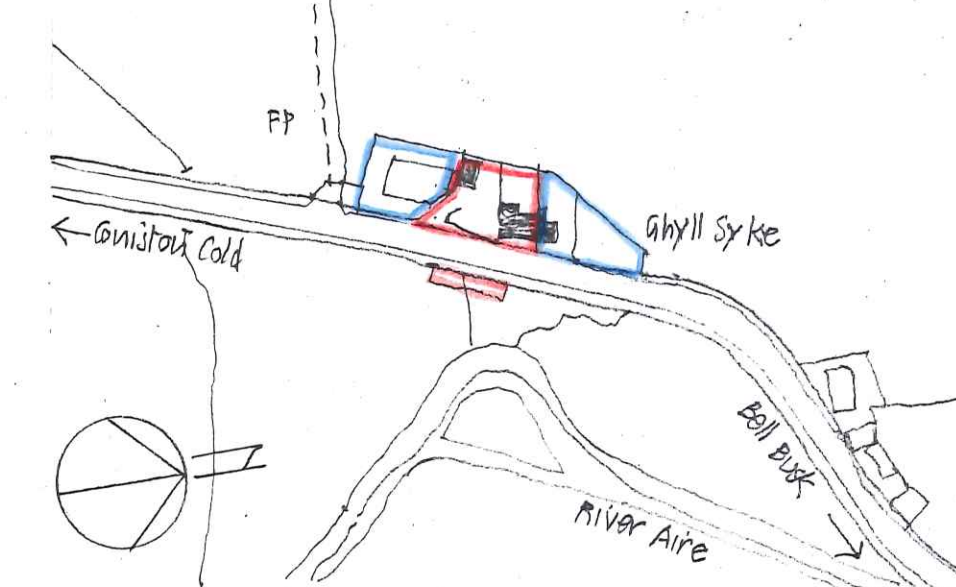
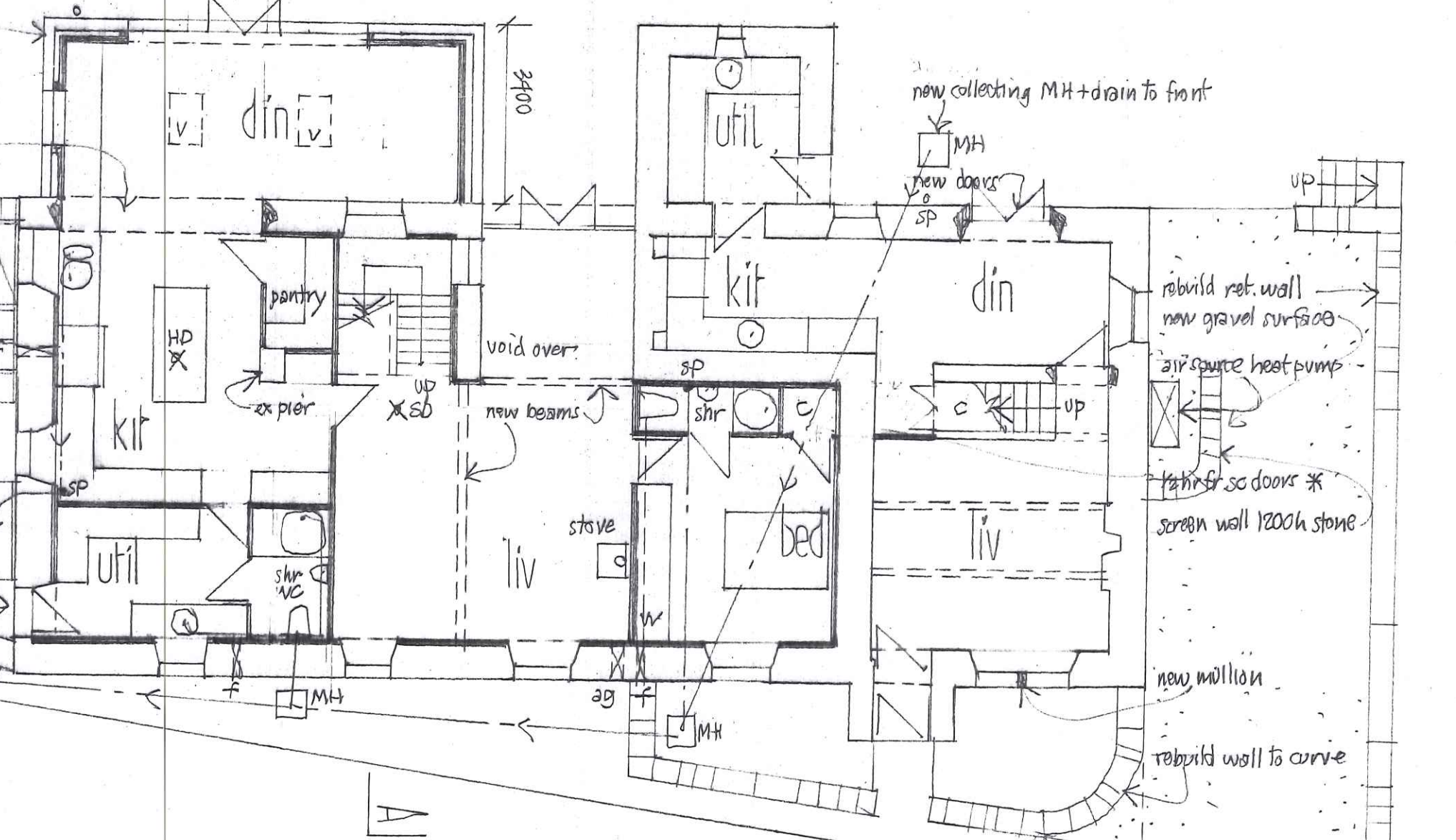
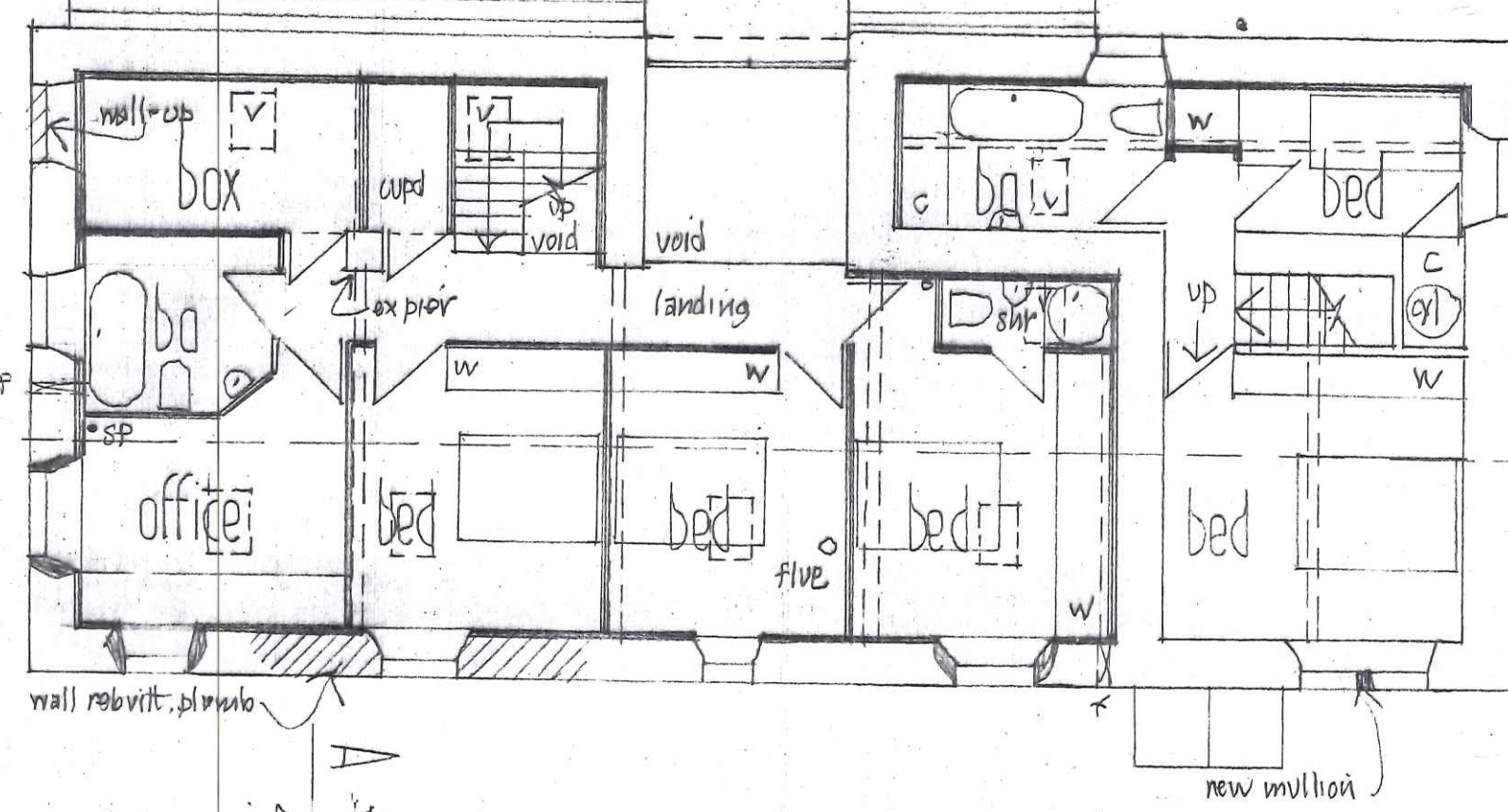
WEST

WEST

EAST

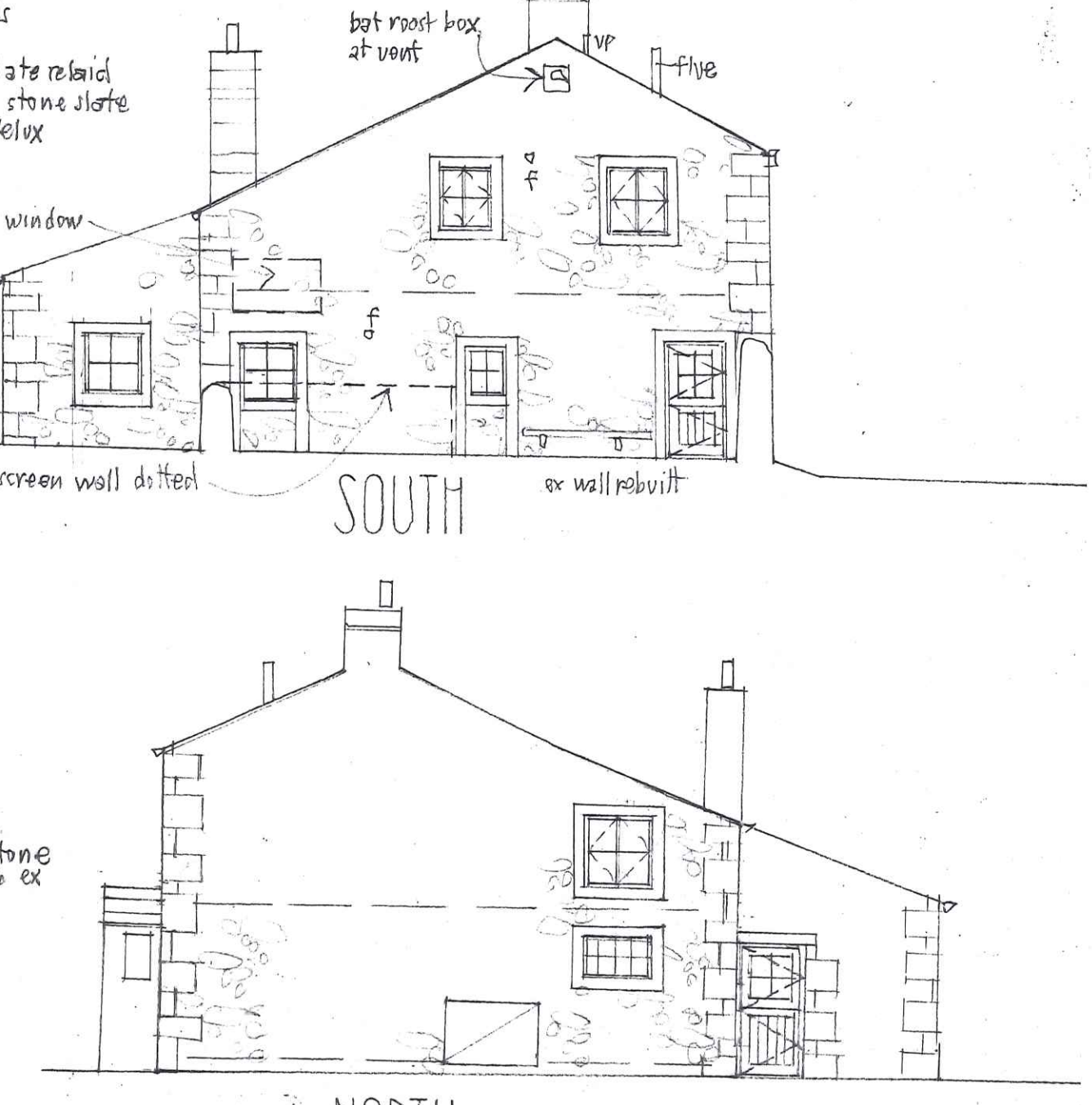
FIRST

GROUND



LOCATION 1:250

BD23 4DU

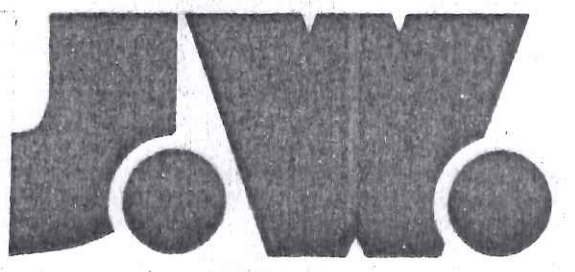


SOUTH

NORTH

A-A

GHYLL SYKE BARN+HOUSE  
CONISTOW COLD  
scale 1:100 November 2021



JOHN & JENNIFER WHARTON : ARCHITECT DESIGNERS  
Craven House  
Brook View  
Cazleton  
SKIPTON  
North Yorkshire BD23 3EX tel 01756 792708

30073