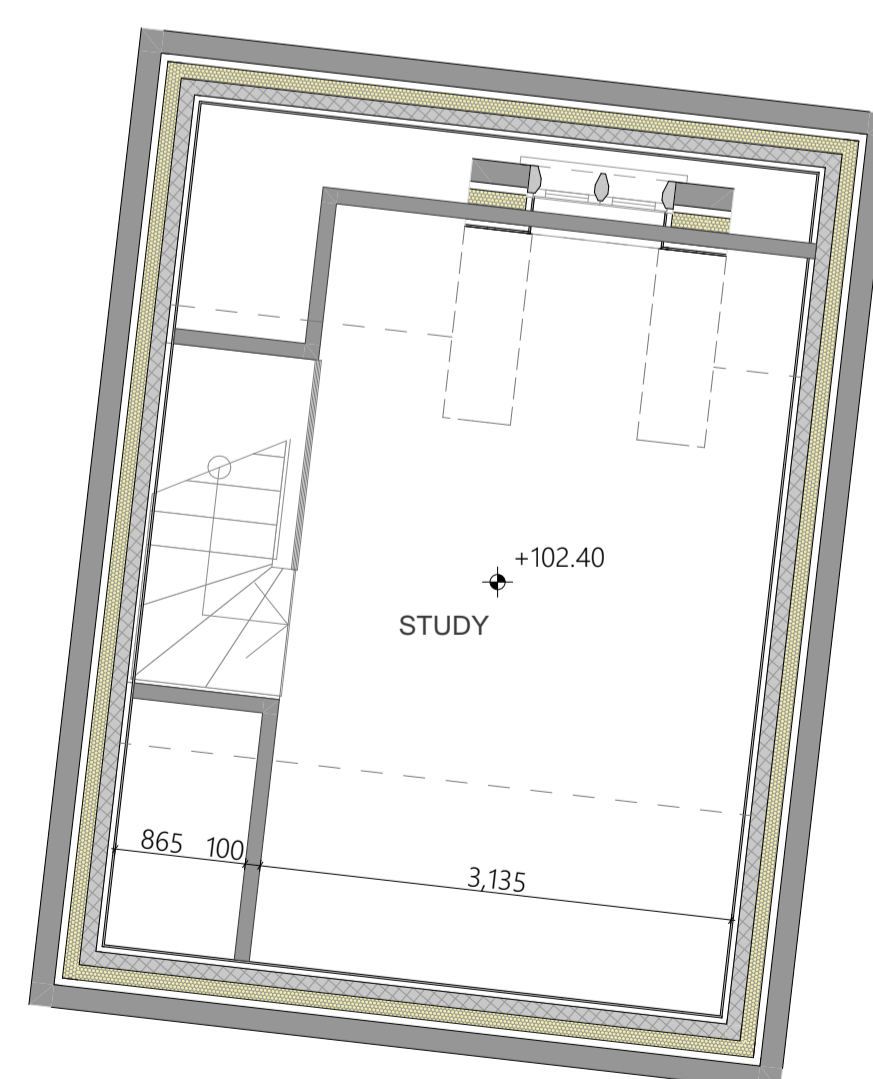
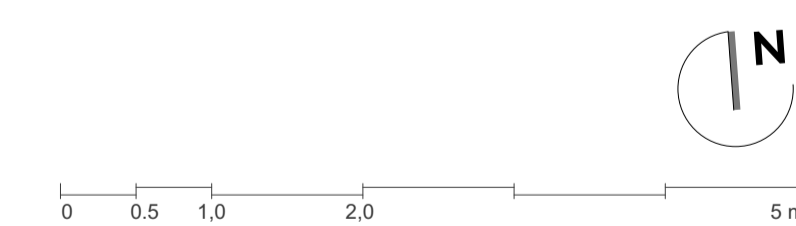


Note:
 Datum levels derived from AJ Horner survey information. Levels
 are arbitrary based on finished floor level of existing South
 Orchard House, value 100.00m.



REV	DATE	DESCRIPTION	DRAWN	CHECK
A1	22/06/20	PLANNING SUBMISSION	GW	TH
-	04/07/22	Draft Planning Issue	GW	TH

KEY PLAN



architects
Dyer
 T +44 (0)1386 764 716
 www.groupdyer.com

DRAWING STATUS
 -
 PROJECT
 South Orchard House, Longborough
 TITLE
 Proposed First Floor Plan
 SCALE (A1)
 1:50
 REV
 A