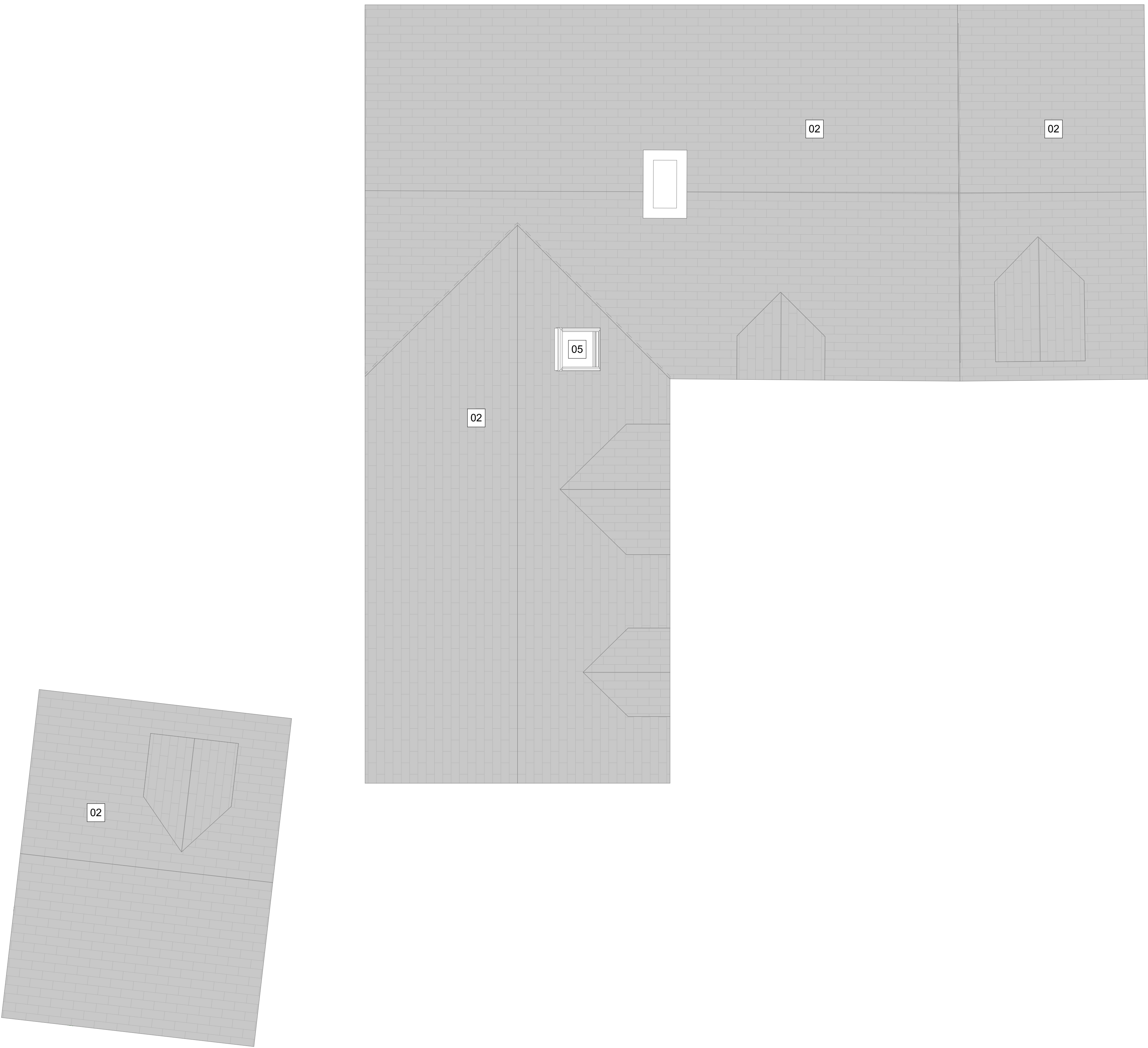


Note:  
 Datum levels derived from AJ Horner survey information. Levels  
 are arbitrary based on finished floor level of existing South  
 Orchard House, value 100.00m.

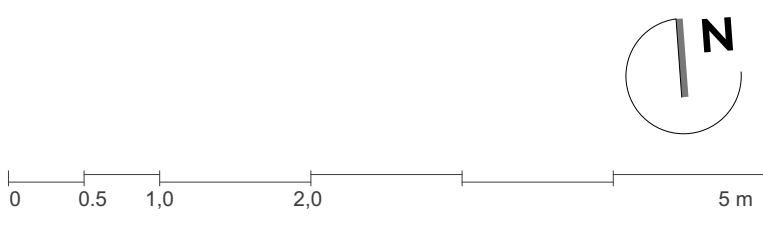
Materials Key

- 01. Natural coursed rubble stone cladding
- 02. Cotswold Bradstone conservation roof tiles
- 03. New stone-mullioned windows
- 04. New timber framed windows
- 05. Conservation rooflight
- 06. Solid timber external door
- 07. Solid timber external 'stable' type door
- 08. Natural stone paving
- 09. Painted metal gates - 'Estate railing' style
- 10. Timber garage doors with clear glazed lights
- 11. Gravel surfacing



REV	DATE	DESCRIPTION	DRAWN	CHECK
A1	22/06/20	PLANNING SUBMISSION	GW	TH
-	04/07/22	Draft Planning Issue	GW	TH

KEY PLAN



architects  
**Dyer**  
 T +44 (0)1386 764 716  
 www.groupdyer.com

DRAWING STATUS  
 -  
 PROJECT  
 South Orchard House, Longborough  
 TITLE  
 Proposed Roof Plan  
 SCALE (S1)  
 1:50, 1:100  
 PROJECT NO. / DRAWING NO.  
 22002-A(PL)-103  
 REV  
 A