

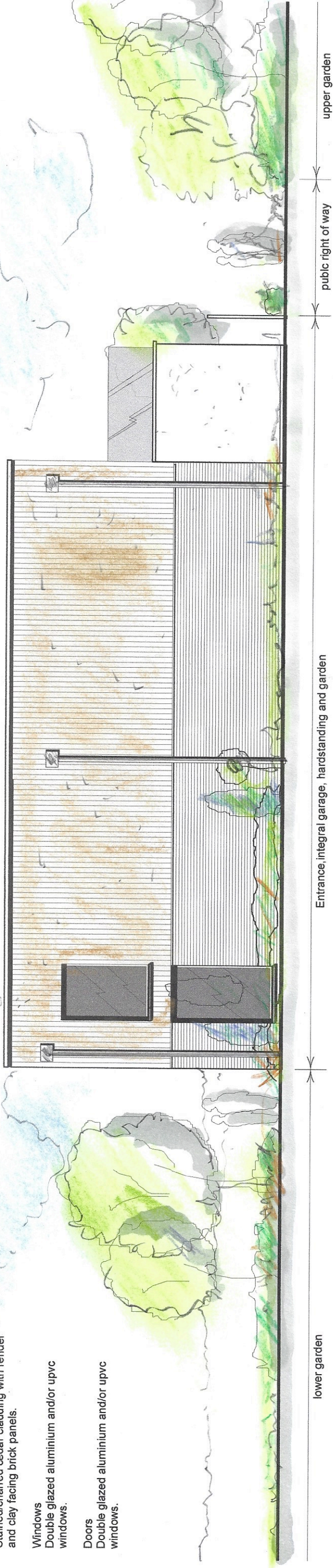
Proposed Materials

Roof
EDMP rubberised flat roofing system concealed behind raised parapet. Galvanised downpipes and hoppers.

Walls
Stained/charred cedar cladding with render and clay facing brick panels.

Windows
Double glazed aluminium and/or upvc windows.

Doors
Double glazed aluminium and/or upvc windows.



EAST ELEVATION



SOUTH ELEVATION

