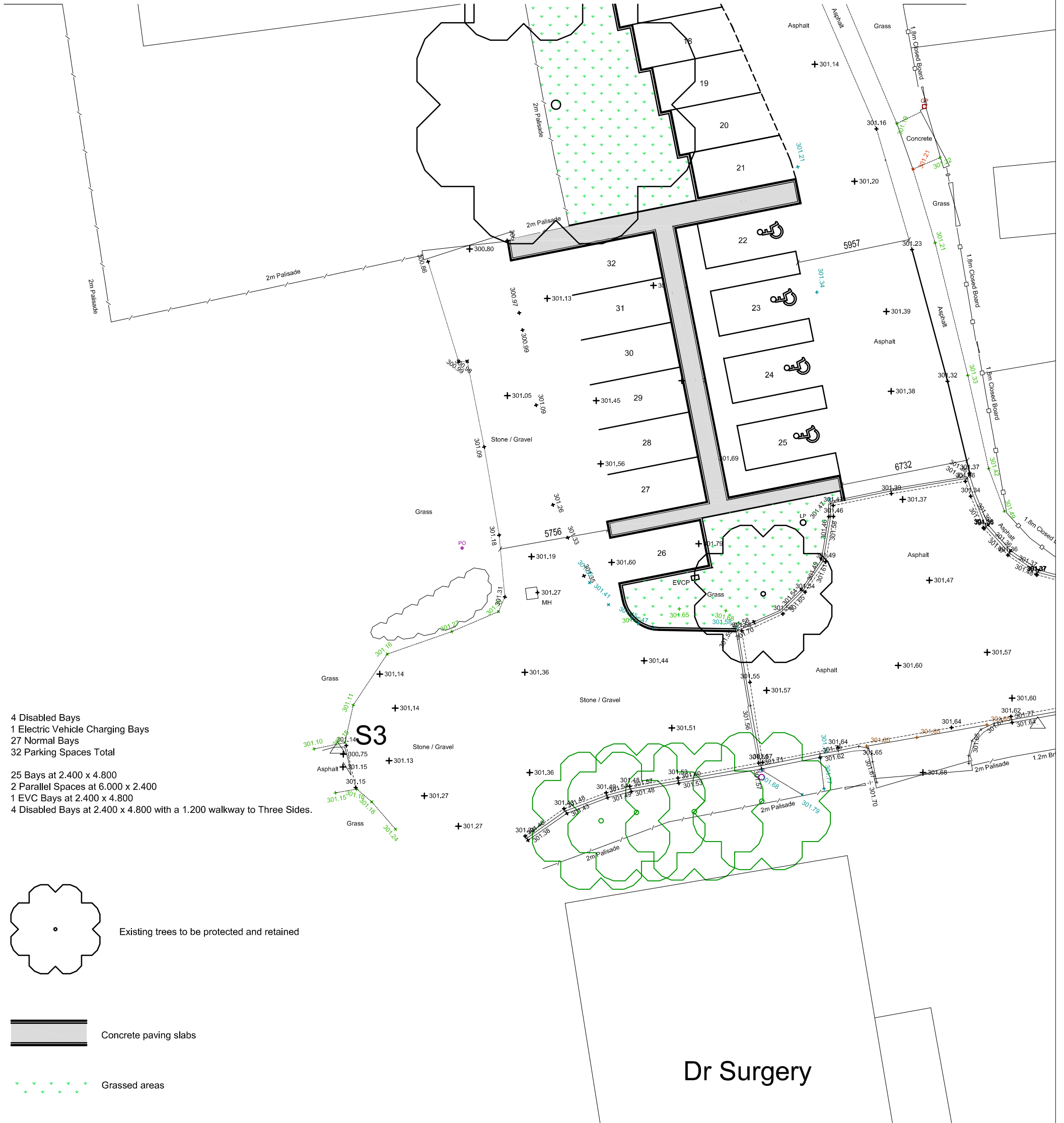


DO NOT SCALE FROM THIS DRAWING: ALL DIMENSIONS TO BE CHECKED ON SITE. ANY ERRORS OR DISCREPANCIES TO BE REPORTED TO THE ARCHITECT IMMEDIATELY.

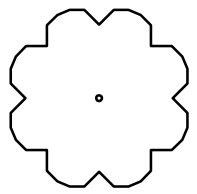
SITE INFORMATION SUPPLIED BY THIRD PARTIES CANNOT BE GUARANTEED FOR ACCURACY. ALL FEATURES AND DIMENSIONS ARE SUBJECT TO CONFIRMATION BY LEGAL SERVICE AND UTILITY DOCUMENTATION AND DETAILED TOPOGRAPHICAL SURVEY.

COPYRIGHT RETAINED BY HUGH MASSEY ARCHITECTS (HMA NE LTD)



- 4 Disabled Bays
- 1 Electric Vehicle Charging Bays
- 27 Normal Bays
- 32 Parking Spaces Total

- 25 Bays at 2.400 x 4.800
- 2 Parallel Spaces at 6.000 x 2.400
- 1 EVCP Bays at 2.400 x 4.800
- 4 Disabled Bays at 2.400 x 4.800 with a 1.200 walkway to Three Sides.



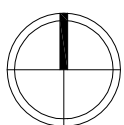
Existing trees to be protected and retained



Concrete paving slabs



Grassed areas



0 10  
1:200

## Hugh Massey Architects, Planning & Landscape Consultants

<b>REVISIONS</b> A: 131022.D0 Revised		<b>PROJECT:</b> Proposed Car Park Tow Law		<i>designhaus</i> , 205 Park Road, South Moor, Stanley, Co.Durham, DH9 7QE t: 01207 280095 f: 01207 280531 e: central.administration@hughmasseyarchitects.co.uk	
<b>DRAWING:</b> Proposed Site Plan, Southern Section <b>CLIENT:</b> Tow Law Town Council		<b>SCALE:</b> 1:200	<b>PAPER:</b> A3	<b>DRAWN:</b> DO	
<b>JOB NO:</b> 1710	<b>DRAWING NO:</b> 100_03	<b>REVISION:</b> A	<b>ORINATION DATE:</b> 05-10-22	<b>DRAWING STATUS:</b> Proposed	<b>CHECKED:</b> HM