

The proposal

To install a Vortex 9 sewage treatment plant for the current needs of Lydcott Nursery and for future potential growth of the business. This is predominately required for toilets in the potting barn, however there are additional needs such as handwashing and for preparation of food/drinks during staff breaks.

Currently, as a temporary solution, the Nursery uses a chemical toilet which has to be taken off site to be emptied. This has worked well for Nursery in the first few years, however as staff numbers grow this is becoming much less practical. Good sanitation on site is vital for the growth of the business and we would struggle to take on more staff with the current set up.

How we meet the general binding rules

- Less than 2cubic meters will be discharged a day, see 'additionalinformation.pdf' for volumes.
- The sewage treatment plant tank has a much larger capacity than is currently required. The Additionalinformation.pdf explains the reasoning for this.
- The discharge will be domestic in nature. Toilets and hand washing sinks from the potting barn.
- Maintenance will be carried out every month to avoid pollution, see 'maintenance.pdf'
- Vortex Sewage Treatment Plant 9 complies with and exceeds BS EN 12566 Part 3, performance information and technical data on this tank can be found in 'Brochure_Vortex.pdf'
- The discharge of the secondary treated sewage effluent will go into a drainage field that complies with building regulations and in line with BS 6297:2007. See 'Drainage field information.pdf'
- The nursery is not in a groundwater source protection zone (SPZ1).
- The nursery is not in or within 50meters of: Special areas of conservation, special protection areas, Ramsar wetland sites or SSSIs, see fig. 1
- No public foul sewer available, see 'additionalinformation.pdf'
- Building regulations approval will be applied for once this application has been validated.
- There is no water abstraction within at least 50m of the proposed sewage treatment plant and drainage field.

Further information

Electricity for the sewage treatment plant will come from the barn (mains connected). Armoured cable will run from the barn underground to the sewage treatment plant, this will be installed by a qualified local electrician.

Installation will happen in accordance with the advice from the manufacturer, 'Vortex_Installation_Guide.pdf' is included. Building regulations will also be followed for the installation of the pipework and chambers.

Access for pumping out the tank is provided by the track running between the barn and 'tunnel1', see the block plan. This will allow a pumping lorry to get to 15m from the tank.

The vortex sewage treatment plant 9 has a visual alarm for compressor/tank malfunction, this will be set up so it can be clearly seen from the main track running from the barn out to the tunnels.

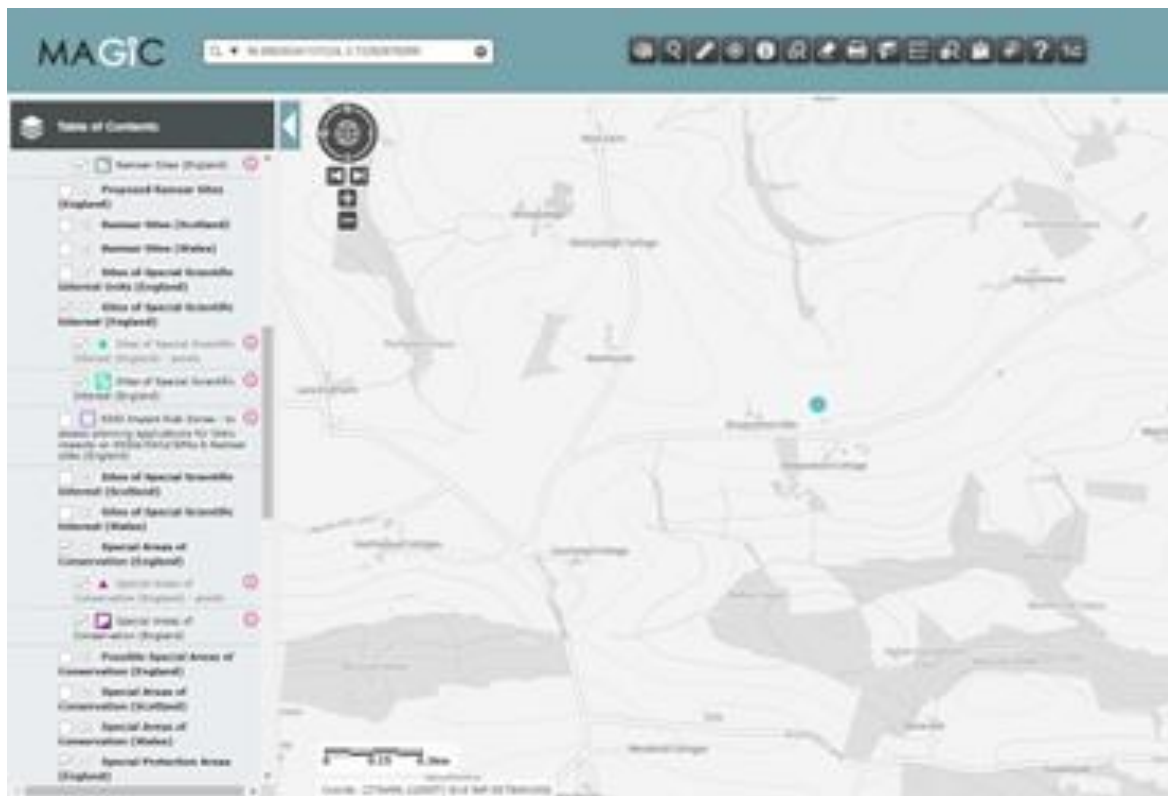


Fig. 1, magic map showing we're not in a protected area