

Overhaul gutters from RWDP 01 to RWDP 04
 If any section of gutter is less than 125mm wide, or
 if the rainwater goods are in poor condition, renew
 with new 125mm cast aluminium heritage ogee profile

Adjust falls as:

downpipe	roof slope	area (adjusted by 1.29)
- RWDP01	8 & 1	49.67m ²
- RWDP02	2	37.93m ²
- RWDP03	3 & 4	27.86m ²
- RWDP04	5, 6 & 7	38.96m ²

Change over RWDP04 from
 uPVC to cast aluminium
 with Ø75mm outlet

Change over RWDPs 05 & 06
 from uPVC to heritage cast
 aluminium with Ø75mm outlet
 - RWDP05 roof (9)
 - RWDP06 roof (10)

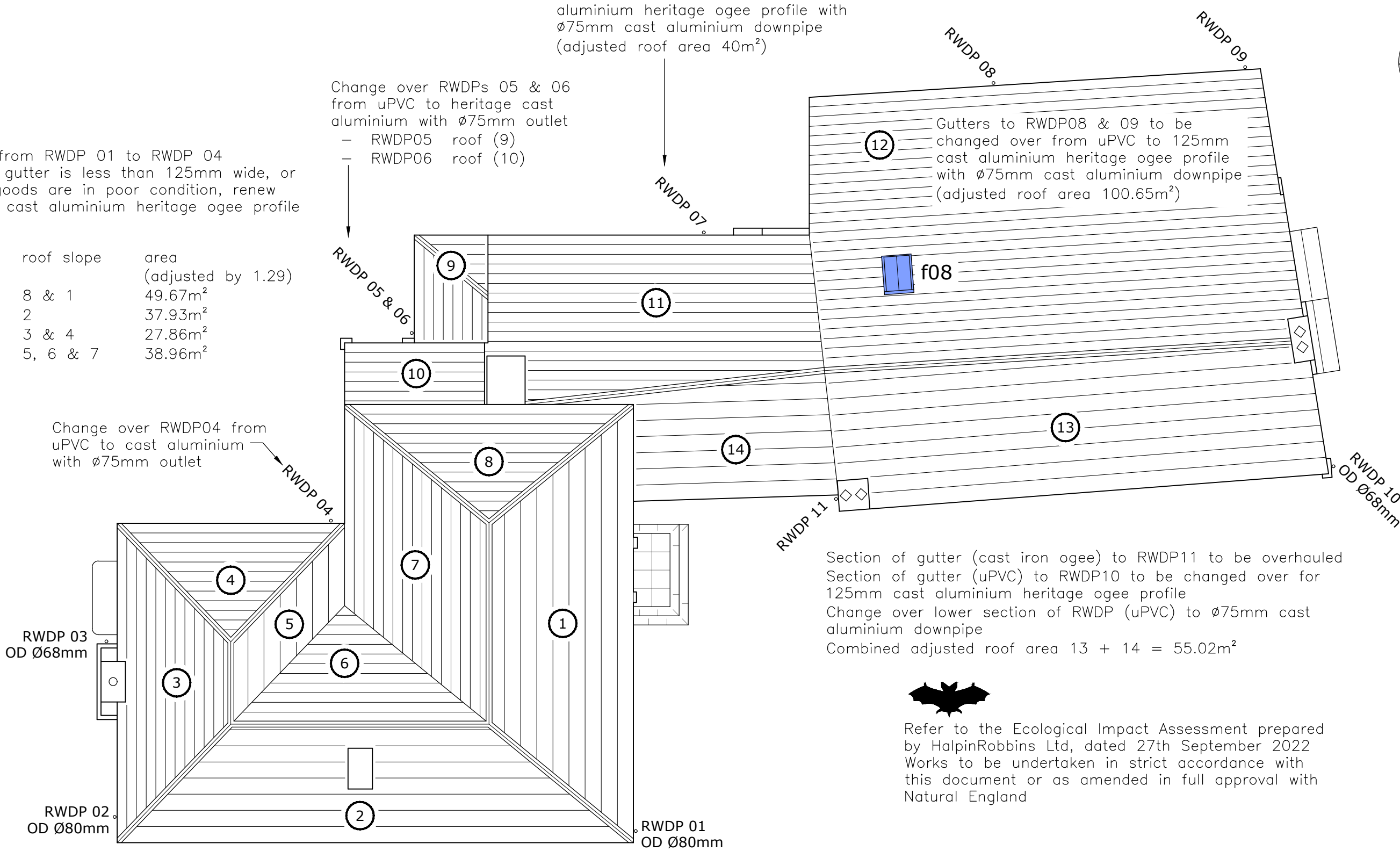
Gutters to RWDP07 to be changed
 over from uPVC to 125mm cast
 aluminium heritage ogee profile with
 Ø75mm cast aluminium downpipe
 (adjusted roof area 40m²)

Gutters to RWDP08 & 09 to be
 changed over from uPVC to 125mm
 cast aluminium heritage ogee profile
 with Ø75mm cast aluminium downpipe
 (adjusted roof area 100.65m²)

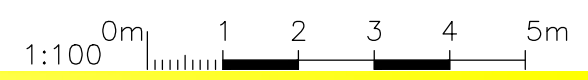
Section of gutter (cast iron ogee) to RWDP11 to be overhauled
 Section of gutter (uPVC) to RWDP10 to be changed over for
 125mm cast aluminium heritage ogee profile
 Change over lower section of RWDP (uPVC) to Ø75mm cast
 aluminium downpipe
 Combined adjusted roof area 13 + 14 = 55.02m²




Refer to the Ecological Impact Assessment prepared
 by HalpinRobbins Ltd, dated 27th September 2022
 Works to be undertaken in strict accordance with
 this document or as amended in full approval with
 Natural England



Proposed Rainwater Goods 1:100



 Andy Paton MCIAT
 AJ Design
 16 Treburley Close, Treburley, LAUNCESTON
 tel: 01579 370567
 email: andy.ajdesign@btinternet.com

Project
 Refurbishment Works at The Old Rectory
 Clyst St Lawrence, CULLOMPTON, EX15 2NW
 for Drs Dixon

Dwg title
 Proposed Works
 07 01-02 Proposed Rainwater Goods

dwg no	MD22 0411 - 66	Initial
scale	1:100	date
		08/09/22
drawn	AJPaton	chkd.
		AJP