



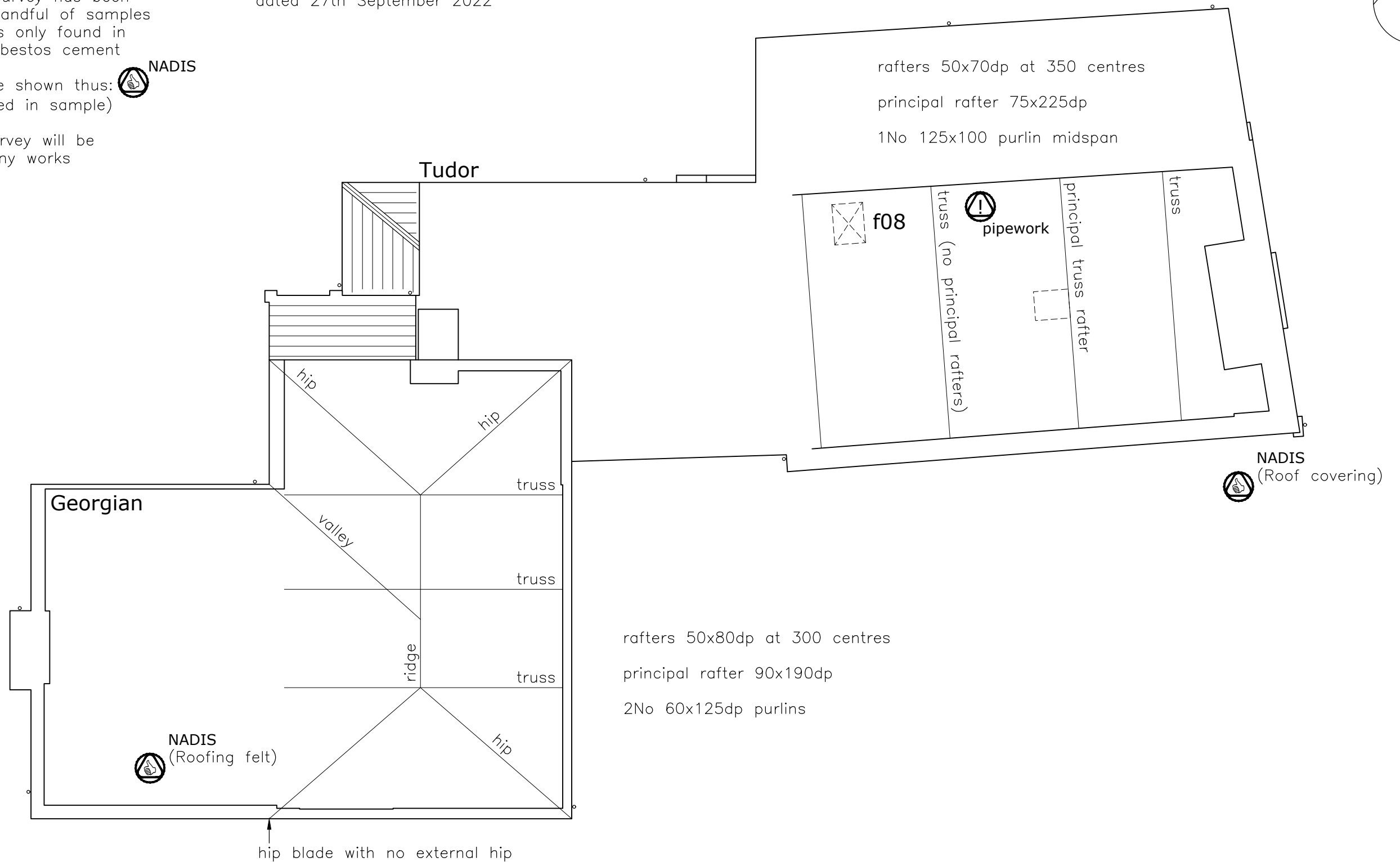
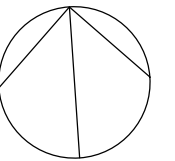
Filename md22\_0411

 **initial asbestos survey:**  
An initial asbestos survey has been carried out and a handful of samples tested; asbestos was only found in the odd, isolated asbestos cement roofing slate  
Sample locations are shown thus:  NADIS  
(no asbestos detected in sample)

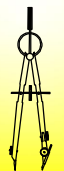
A fuller asbestos survey will be undertaken before any works commence



Refer to the Ecological Impact Assessment prepared by HalpinRobbins Ltd dated 27th September 2022



# Existing Loft Space 1:100



Andy Paton MCIAT  
 AJ Design  
 16 Treburley Close, Treburley, LAUNCESTON  
 tel: 01579 370567  
 email: andy.ajdesign@btinternet.com

Project  
 Refurbishment Works at The Old Rectory  
 Clyst St Lawrence, CULLOMPTON, EX15 2NW  
 for Drs Dixon

Dwg title  
 Existing Arrangement  
 Existing Loft Space

dwg no	MD22 0411 - 06	Initial					
scale	1:100	date	09/05/22	drawn	AJPaton	chkd.	AJP