



Design Statement

Bedlingtonshire Golf Club

Report Prepared For:

Bedlingtonshire Golf Club

Acorn Bank, Hartford Rd

Bedlington NE22 6AA

Project Ref: 22023

Prepared By: Colin Wardle ARB

Revision: R02

Revision Date: 23/09/2022



CONTENTS

1.0 BACKGROUND

2.0 SITE CONTEXT

3.0 CONCEPTUAL RESPONSE

4.0 EXISTING BUILDING

APPENDICES

A : Site Context Plan

B : Existing Drawings

C : Proposed Drawings

The Old Stables
Greys Yard
Morpeth
Northumberland
NE61 1QD

T 01670 505 615

E studio@designtwo.co.uk

W designtwo.co.uk

1 BACKGROUND

The current property is an active popular golf club with a strong membership following and active within the local community.

The aim of this proposal is to provide a new larger improved professional club shop and to introduce 2 state of the art swing bays to allow specialist indoor training for all ages and abilities, and tailored club selection.

A new golf cart parking enclosure will allow carts to be relocated from the undercover walkway, improving the approach to the club and reducing confusion for visitors.

2 SITE CONTEXT

The application site sits within the golf club site, surrounded by trees, hedges and the course.

3 CONCEPTUAL RESPONSE

Our assessment of the site and existing building features and constraints has informed the initial conceptual response shown.

The design provides a single storey enclosure for electric buggy parking under cover matched in finish to the main building.

A relocated Pro Golf Shop now sits in clear view from the main approach improving clarity, this is the first point of contact for visitors. This is where all players go before tee off.

The new facilities comprise ,

- Widened entrance footpath and small outdoor seating area
- Relocated, Improved and enlarged Golf Pro Shop.
- 2 State of the Art indoor swing bays.
- Indoor putting practice/club selection space.
- Stock storage.
- Relocated secure trolley parking.
- Electric buggy parking enclosure



Figure 1 Main approach from car park, overcrowded, unclear and cramped



Figure 2 View from main footpath towards the existing club house



Figure 3 Existing Golf Pro Shop, the door to the left is the entrance



Figure 4 Existing Golf Pro Shop, side windows

4 EXISTING BUILDING

The building comprises the following materials;

- Walls of natural timber shiplap boarding, black opaque stained.
- Pitched roofs of grey concrete tiles, plat in profile.
- Flat roofs to the rear of green mineralised felt
- Windows and doors are generally uPVC.
- Shutters - External, galvanised steel



Figure 5 View of main entrance walkway and buggy parking



Figure 6 Pro Shop existing gable view

Appendix A

CONSTRAINTS AND OPPORTUNITIES PLAN

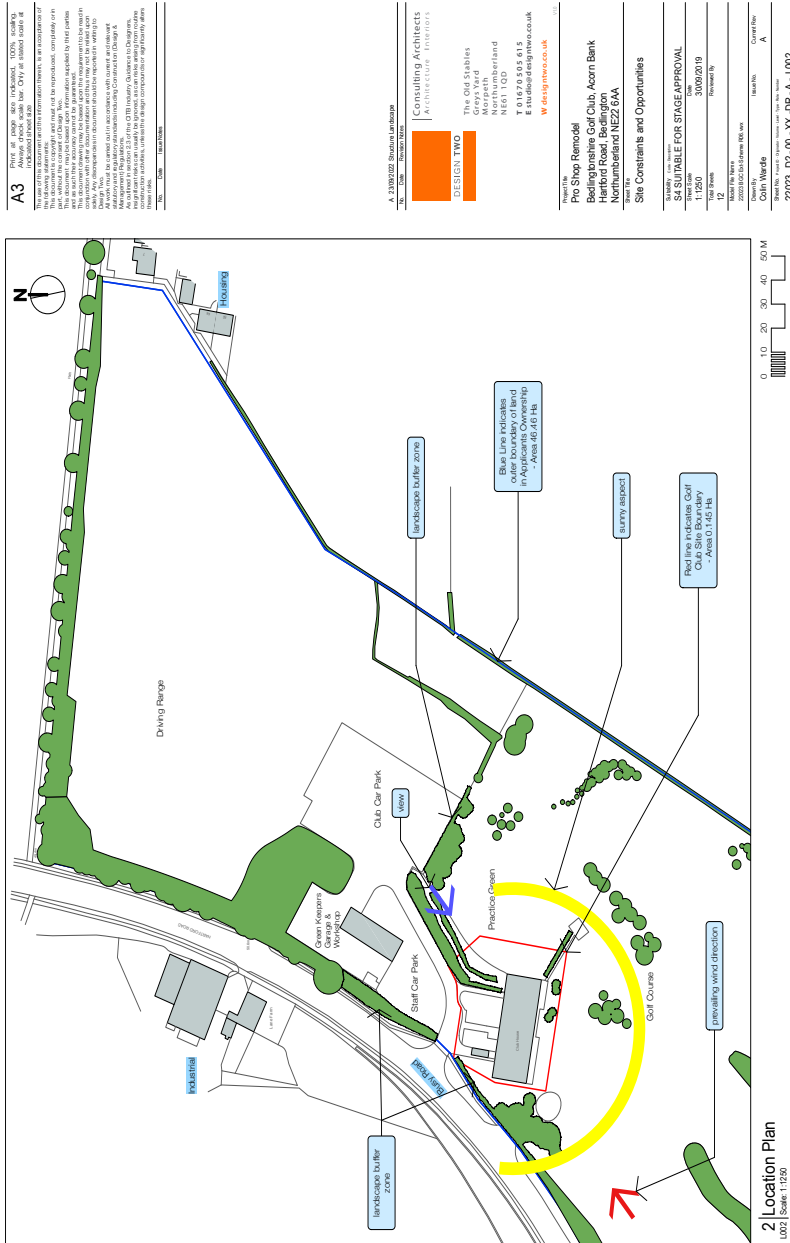


Figure 7 Constraints and Opportunities Plan 22023/L002

Appendix B

EXISTING DRAWINGS

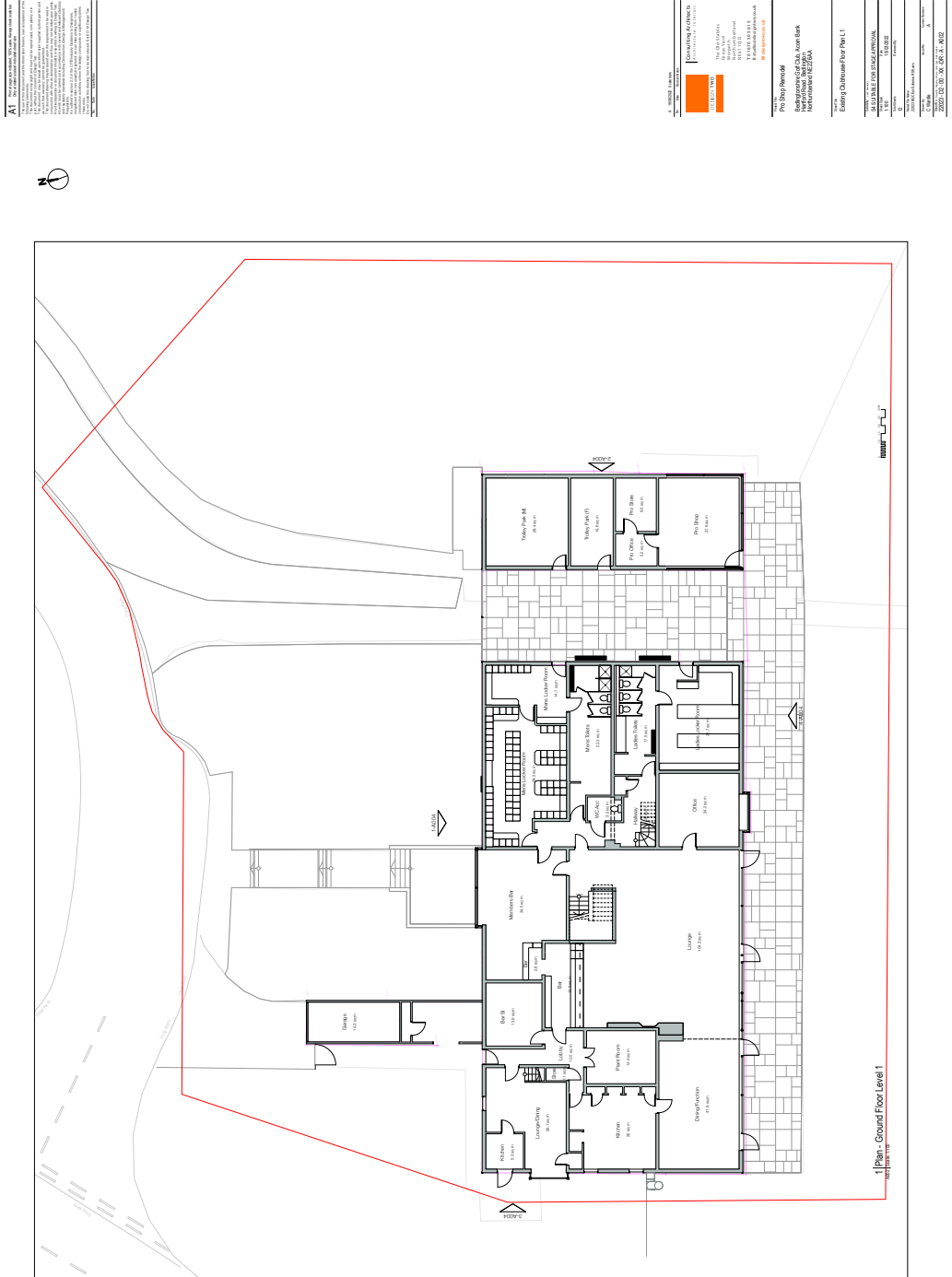


Figure 8 Existing Plan, drawing number 22023/A002

Appendix B

EXISTING DRAWINGS

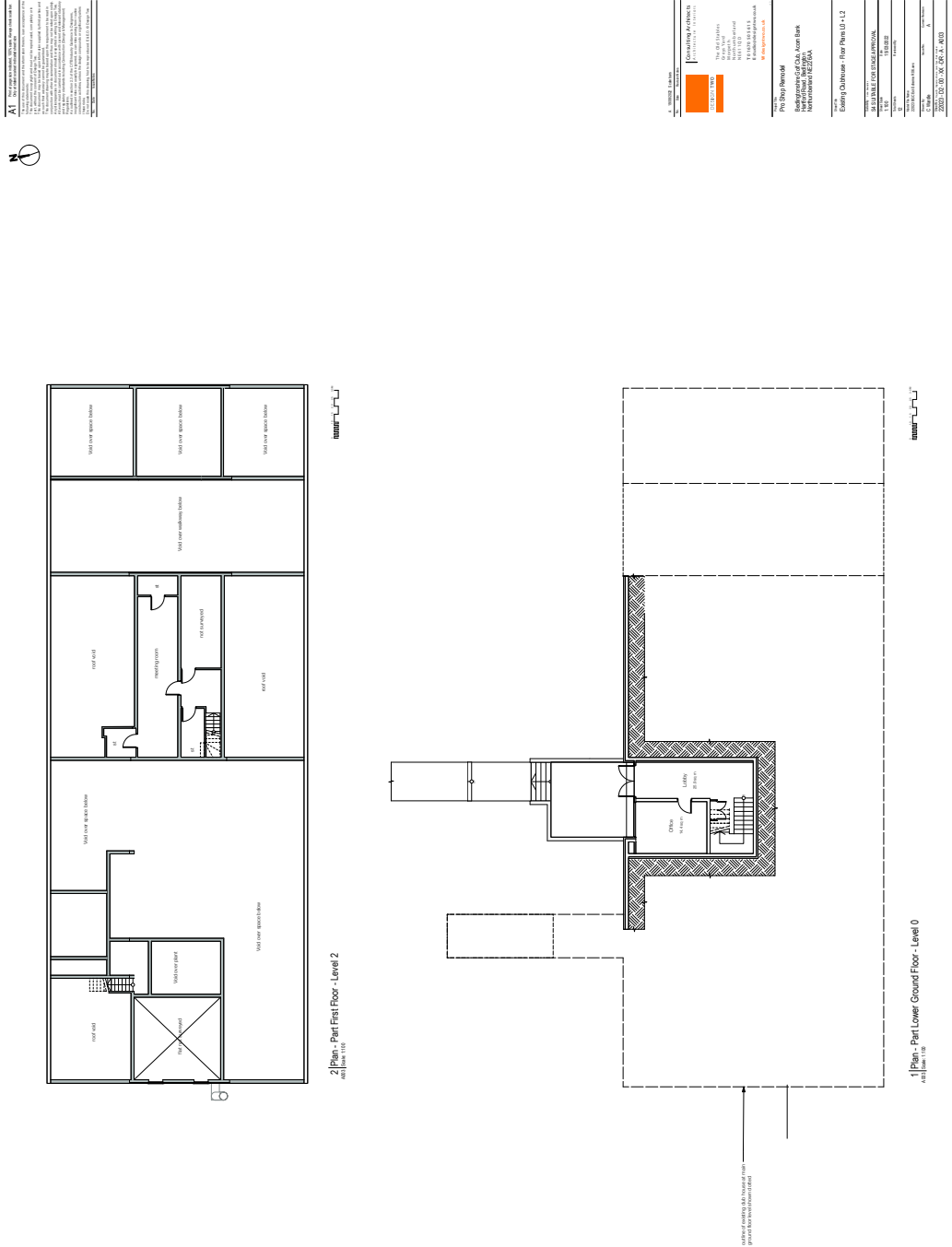
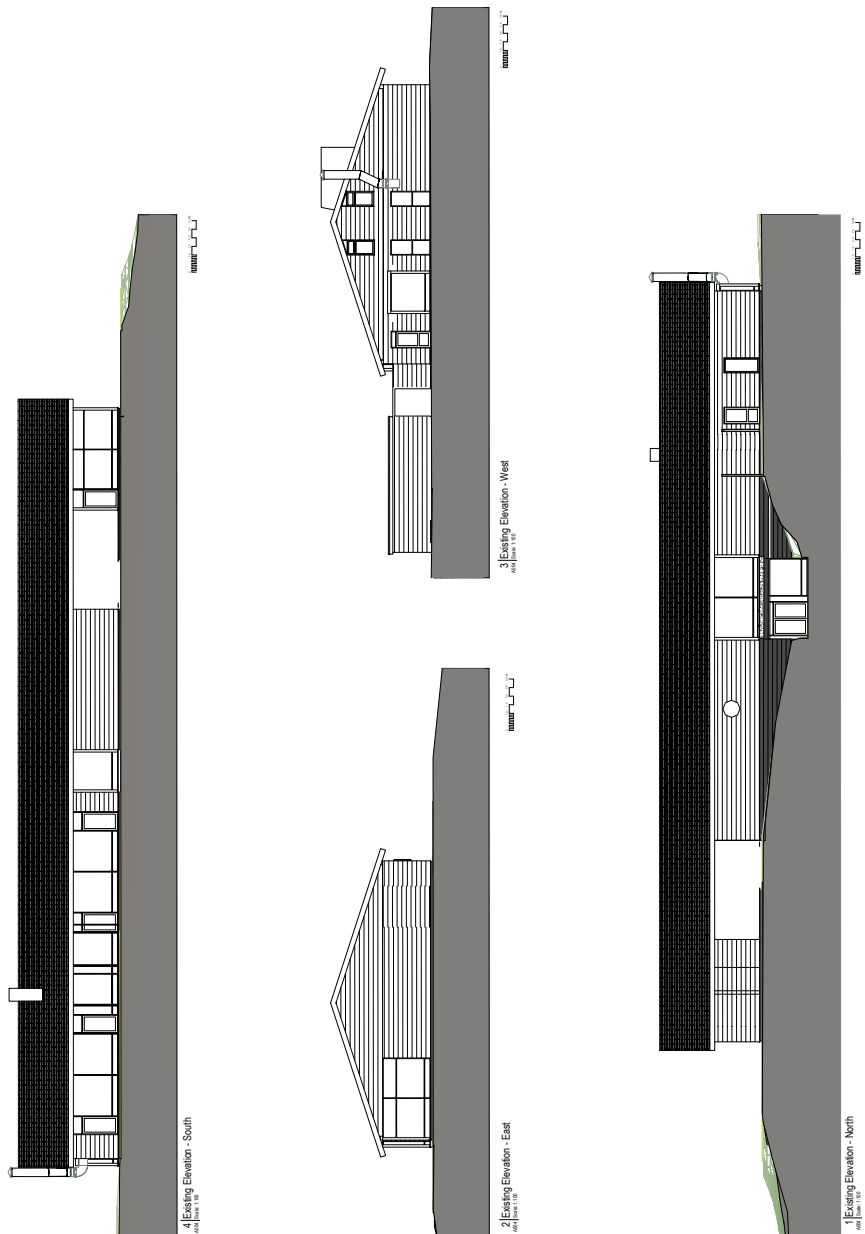


Figure 9 Existing Plans, drawing number 22023/A003

Appendix B

EXISTING DRAWINGS cont.

A1 THE ARCHITECT'S PROFESSIONAL LIABILITY INSURANCE POLICY DOES NOT COVER THE ARCHITECT'S LIABILITY FOR NEGLIGENCE IN THE PERFORMANCE OF PROFESSIONAL SERVICES. THE ARCHITECT'S LIABILITY FOR NEGLIGENCE IS LIMITED TO THE AMOUNT OF THE POLICY LIMITS. THE ARCHITECT'S LIABILITY FOR NEGLIGENCE IS LIMITED TO THE AMOUNT OF THE POLICY LIMITS. THE ARCHITECT'S LIABILITY FOR NEGLIGENCE IS LIMITED TO THE AMOUNT OF THE POLICY LIMITS.



PROFESSIONAL LIABILITY INSURANCE POLICY
 THE ARCHITECT'S PROFESSIONAL LIABILITY INSURANCE POLICY DOES NOT COVER THE ARCHITECT'S LIABILITY FOR NEGLIGENCE IN THE PERFORMANCE OF PROFESSIONAL SERVICES. THE ARCHITECT'S LIABILITY FOR NEGLIGENCE IS LIMITED TO THE AMOUNT OF THE POLICY LIMITS. THE ARCHITECT'S LIABILITY FOR NEGLIGENCE IS LIMITED TO THE AMOUNT OF THE POLICY LIMITS. THE ARCHITECT'S LIABILITY FOR NEGLIGENCE IS LIMITED TO THE AMOUNT OF THE POLICY LIMITS.

PROFESSIONAL LIABILITY INSURANCE POLICY
 THE ARCHITECT'S PROFESSIONAL LIABILITY INSURANCE POLICY DOES NOT COVER THE ARCHITECT'S LIABILITY FOR NEGLIGENCE IN THE PERFORMANCE OF PROFESSIONAL SERVICES. THE ARCHITECT'S LIABILITY FOR NEGLIGENCE IS LIMITED TO THE AMOUNT OF THE POLICY LIMITS. THE ARCHITECT'S LIABILITY FOR NEGLIGENCE IS LIMITED TO THE AMOUNT OF THE POLICY LIMITS. THE ARCHITECT'S LIABILITY FOR NEGLIGENCE IS LIMITED TO THE AMOUNT OF THE POLICY LIMITS.

PROFESSIONAL LIABILITY INSURANCE POLICY
 THE ARCHITECT'S PROFESSIONAL LIABILITY INSURANCE POLICY DOES NOT COVER THE ARCHITECT'S LIABILITY FOR NEGLIGENCE IN THE PERFORMANCE OF PROFESSIONAL SERVICES. THE ARCHITECT'S LIABILITY FOR NEGLIGENCE IS LIMITED TO THE AMOUNT OF THE POLICY LIMITS. THE ARCHITECT'S LIABILITY FOR NEGLIGENCE IS LIMITED TO THE AMOUNT OF THE POLICY LIMITS. THE ARCHITECT'S LIABILITY FOR NEGLIGENCE IS LIMITED TO THE AMOUNT OF THE POLICY LIMITS.

PROFESSIONAL LIABILITY INSURANCE POLICY
 THE ARCHITECT'S PROFESSIONAL LIABILITY INSURANCE POLICY DOES NOT COVER THE ARCHITECT'S LIABILITY FOR NEGLIGENCE IN THE PERFORMANCE OF PROFESSIONAL SERVICES. THE ARCHITECT'S LIABILITY FOR NEGLIGENCE IS LIMITED TO THE AMOUNT OF THE POLICY LIMITS. THE ARCHITECT'S LIABILITY FOR NEGLIGENCE IS LIMITED TO THE AMOUNT OF THE POLICY LIMITS. THE ARCHITECT'S LIABILITY FOR NEGLIGENCE IS LIMITED TO THE AMOUNT OF THE POLICY LIMITS.

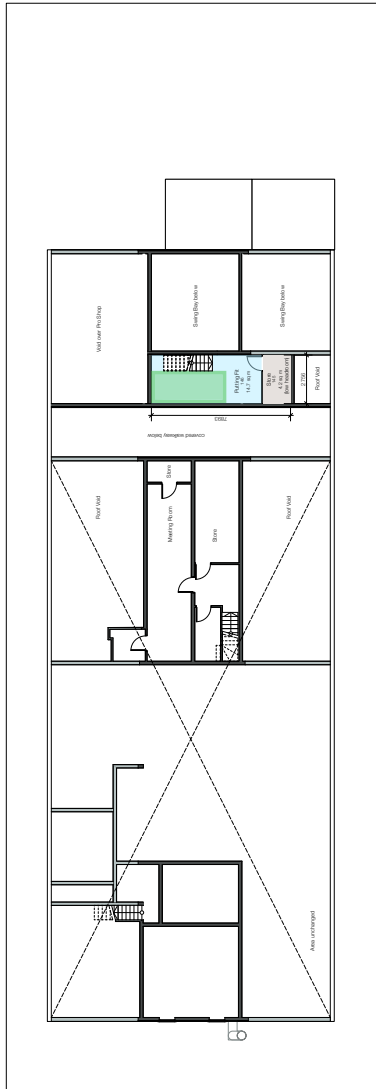
Figure 10 Existing Elevations, drawing number 22023/A004

Appendix C

PROPOSED DRAWINGS Cont.

AI **PROPOSED FLOOR PLAN - FIRST FLOOR LEVEL 2**

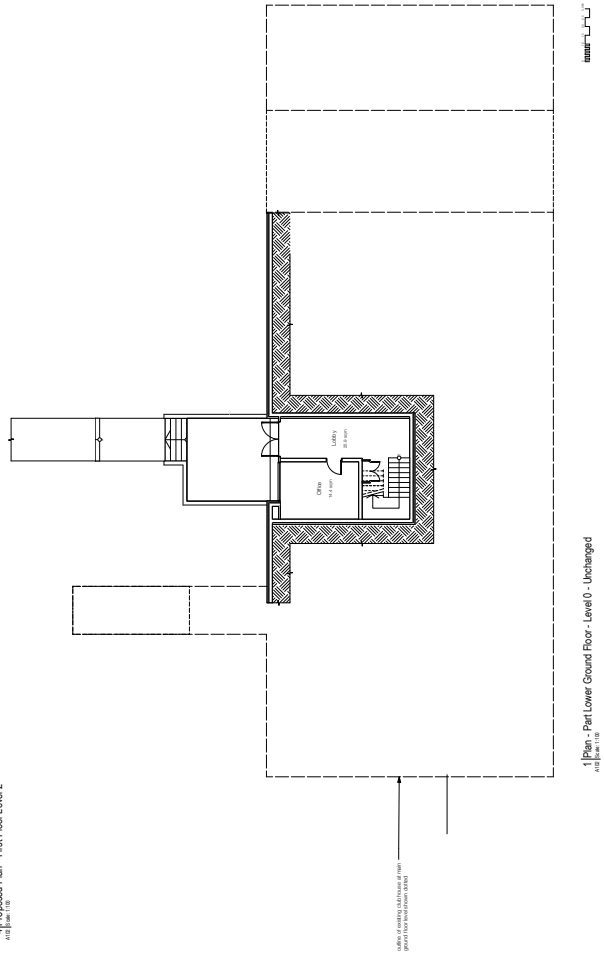
DATE: 2023.08.24
 DRAWN BY: [Name]
 CHECKED BY: [Name]
 PROJECT: [Name]
 SHEET NO: [Number]
 TOTAL SHEETS: [Number]



Proposed Plan - First Floor Level 2

AI **PROPOSED FLOOR PLAN - LOWER GROUND FLOOR**

DATE: 2023.08.24
 DRAWN BY: [Name]
 CHECKED BY: [Name]
 PROJECT: [Name]
 SHEET NO: [Number]
 TOTAL SHEETS: [Number]



Proposed Plan - Lower Ground Floor

Figure 12 Proposed Floor Plans L0 and L2, drawing number 22023/A102

Appendix C

PROPOSED DRAWINGS Cont.



Figure 13 Proposed Visual